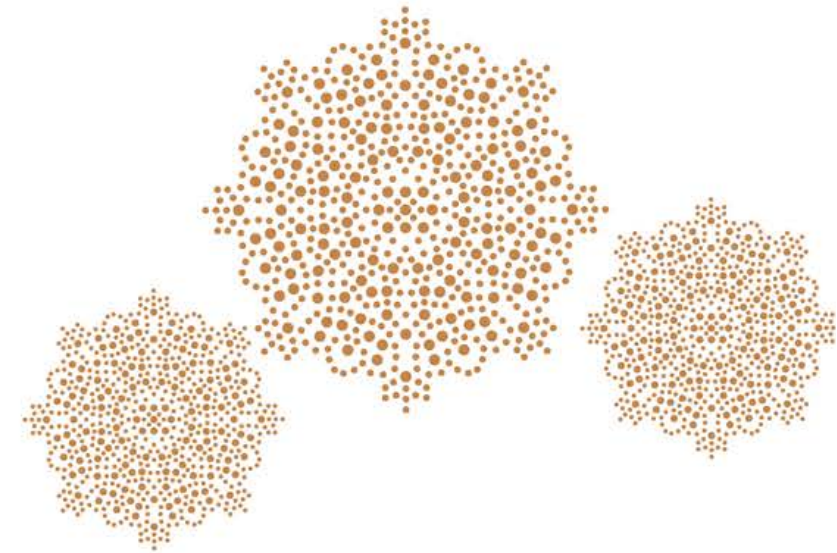


ARCHER HUMPHRYES ARCHITECTS

Presentation of duct to AV room and various options of possible re-route
Date: 30 – 09 – 2022



A photograph of a building facade, likely a school or institutional building, featuring classical architectural elements such as arched windows and decorative moldings. A red rectangular box is drawn on the image, highlighting a small, dark, rectangular object mounted on a ledge or wall. The object appears to be a small, dark, rectangular object, possibly a sensor or a small window. The building is light-colored, and the sky is visible in the background.

Architectural floor plan of a building section showing various rooms and mechanical equipment. The plan includes rooms labeled D2-16, D2-18, D2-17, D2-11, RM.2-19, RM.2-16, RM.2-18A, and RM.2-18B. It also shows a 'DET 381' (detritus bin) and a 'Unisex Toilet'. Mechanical equipment includes 'Medium ice machine' and 'Medium ice storage' units. The plan is annotated with floor levels (FFL) and window specifications. A legend at the bottom explains the color-coding for current locations and air intake specifications.

Legend:

- MVHR/02/05 CURRENT LOCATION
500mm x 200mm WIDE FRESH AIR INTAKE
HIGH LEVEL
- MVHR/01/03 CURRENT LOCATION
450mm x 200mm WIDE FRESH AIR INTAKE
HIGH LEVEL
- OPENING 900 x 900mm MINIMUM FOR BOTH DUCTS.

Current AS BUILT

Photos and sketch of current condition - CURRENT

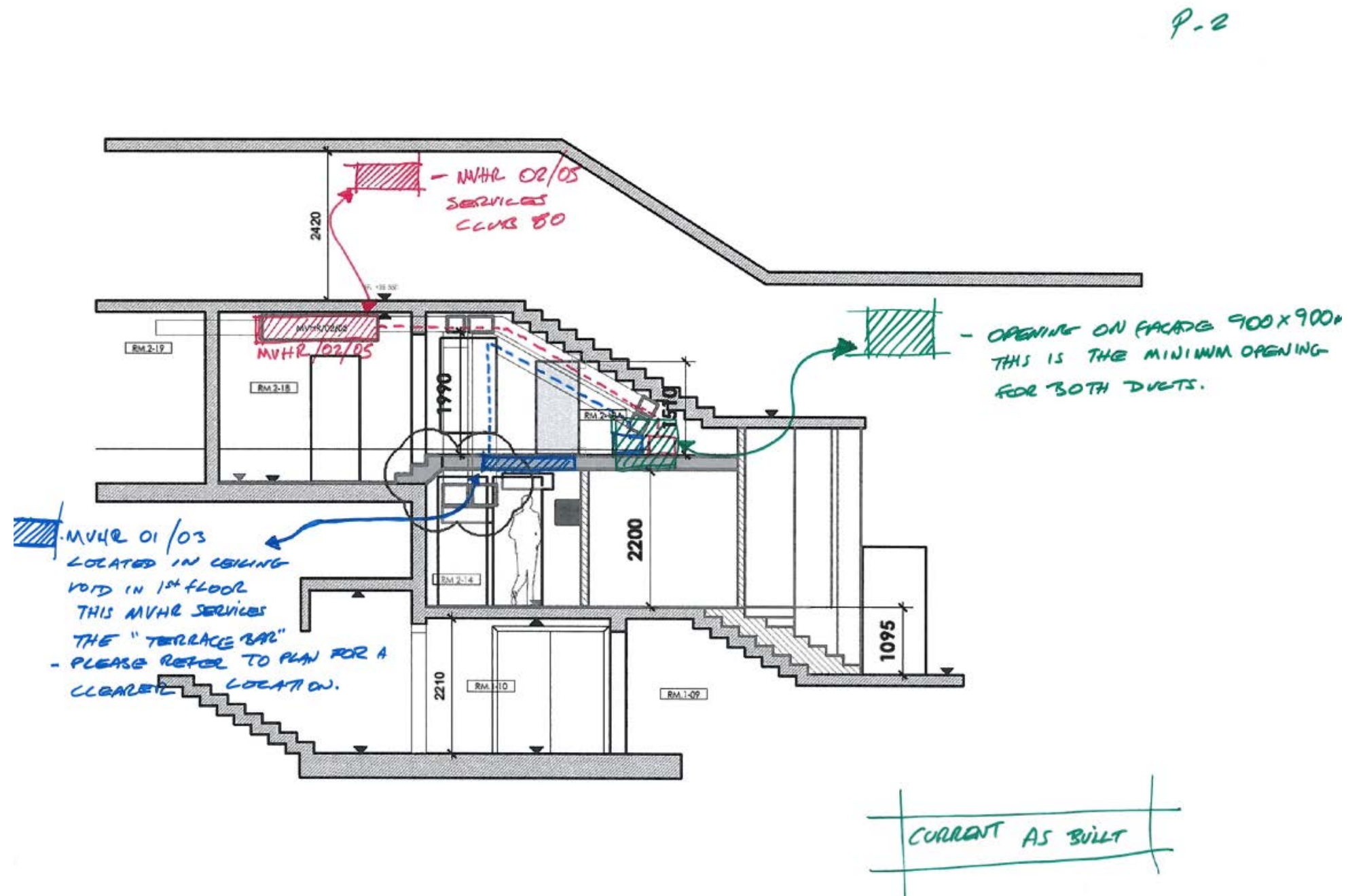
1. CURRENT condition duct going through the AV room.



Image 2: Double height space converted into AV room – As built



Image 6: Current location of MVHR 01/03 shown in Blue, this is currently now closed in by new listed decorative ceilings.



DUCTS TO TRAVEL TO ROOF FROM CURRENT AV ROOM – 2 18A - Option 1

2. Option ONE

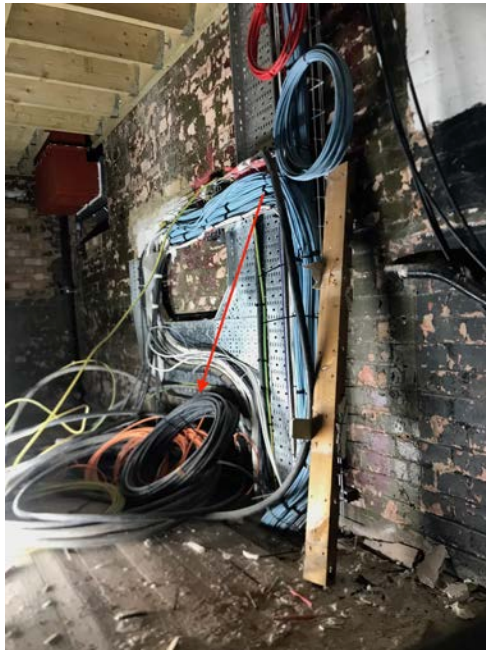
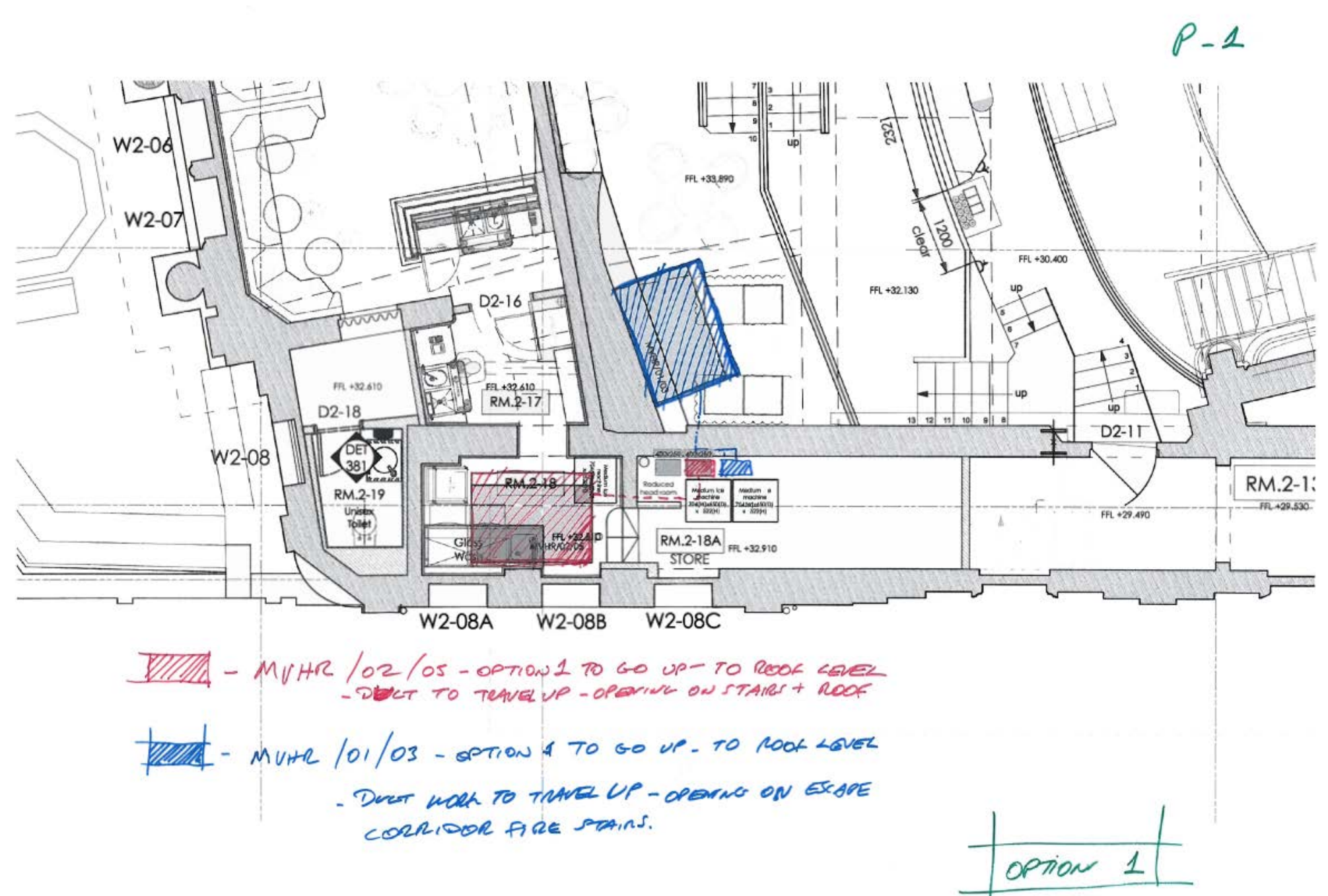


Image 3: Lower part of AV room



Image 6: Current location of MVHR 01/03 shown in Blue, this is currently now closed in by new listed decorative ceilings.



Archer Humphries Architects
Central House
142 Central Street
London
EC1V 8AR

DUCTS TO TRAVEL TO ROOF FROM CURRENT AV ROOM – 2 18A - Option 1

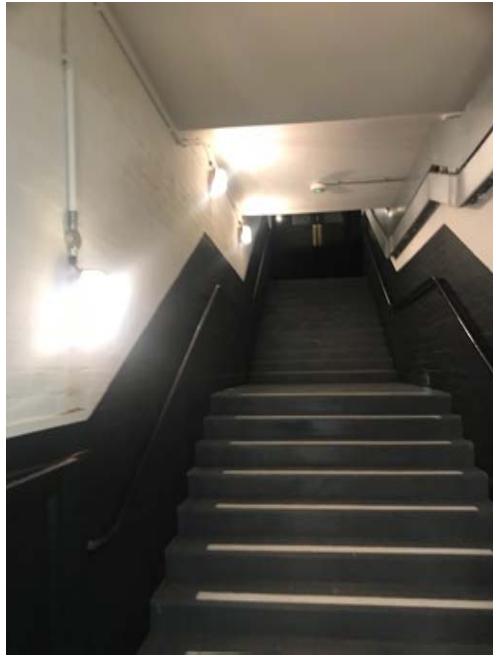


Image 4: Escape stair shown here with electrical tray on the right shown on the sketch as pink route.

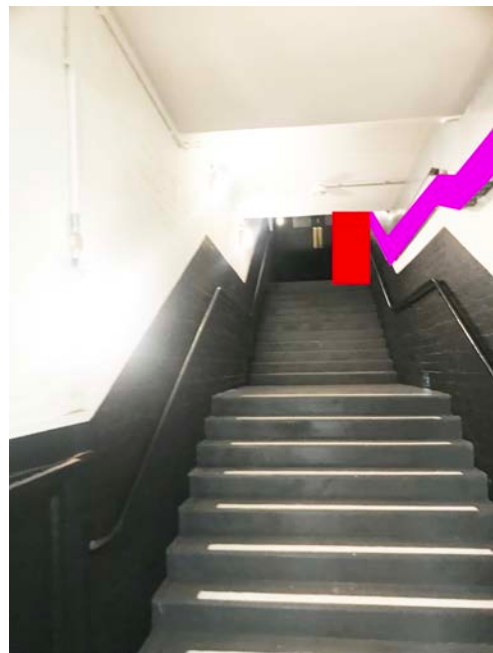
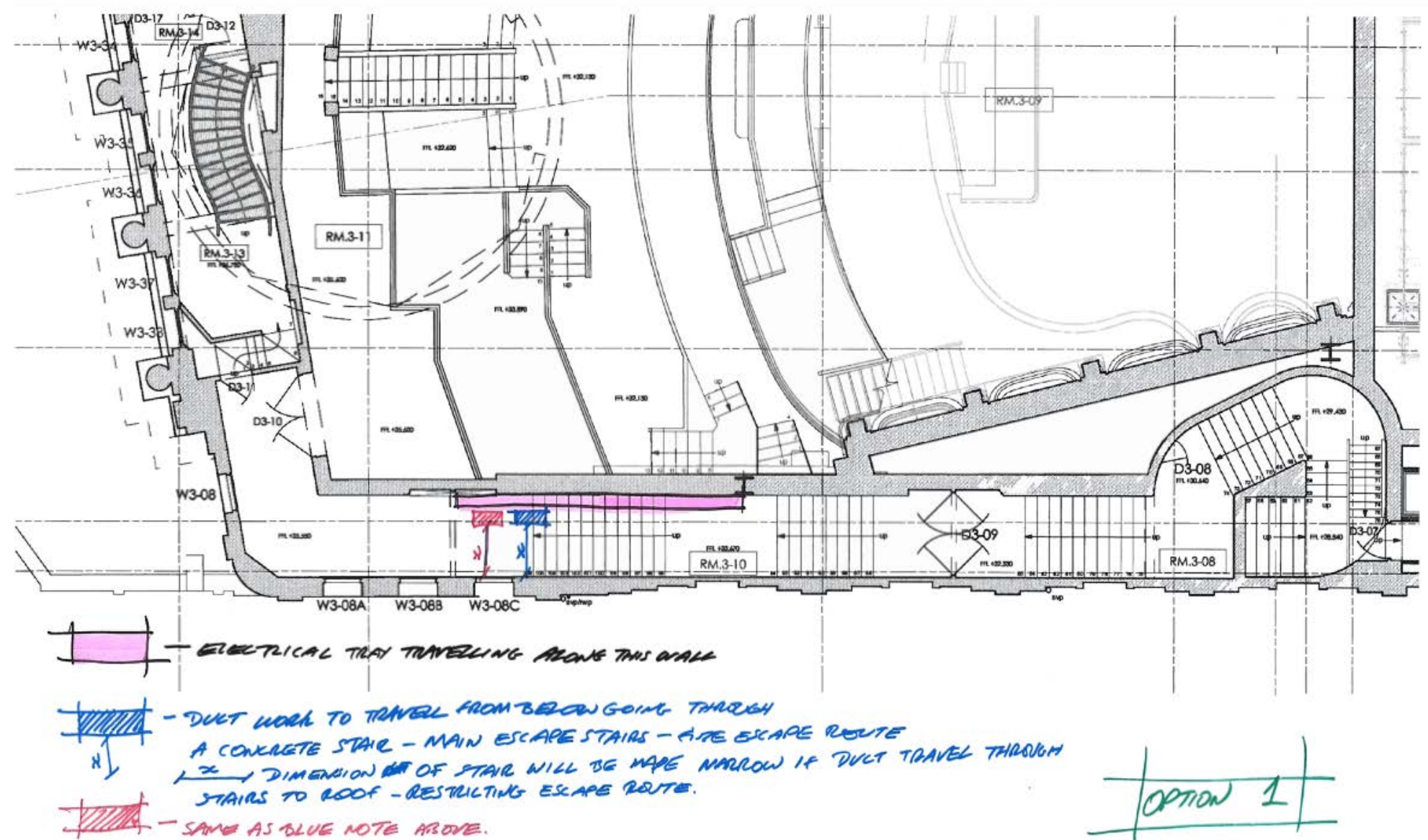


Image 5: Pink line shows electrics – RED duct location in schematic depiction.



DUCTS TO TRAVEL TO ROOF FROM CURRENT AV ROOM – 2 18A - Option 1

1. Option ONE

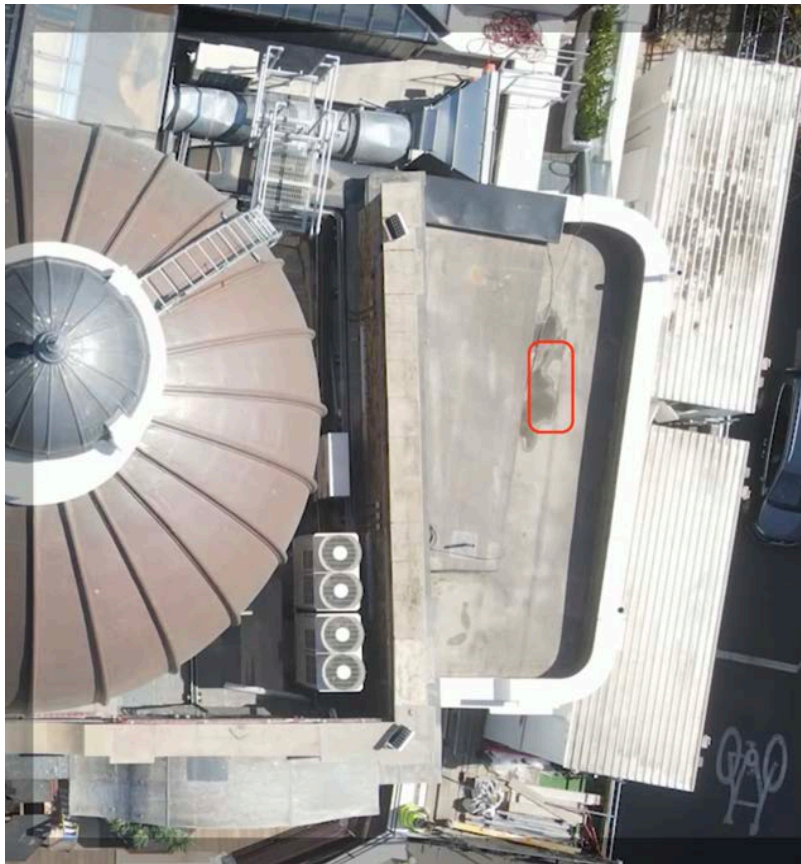
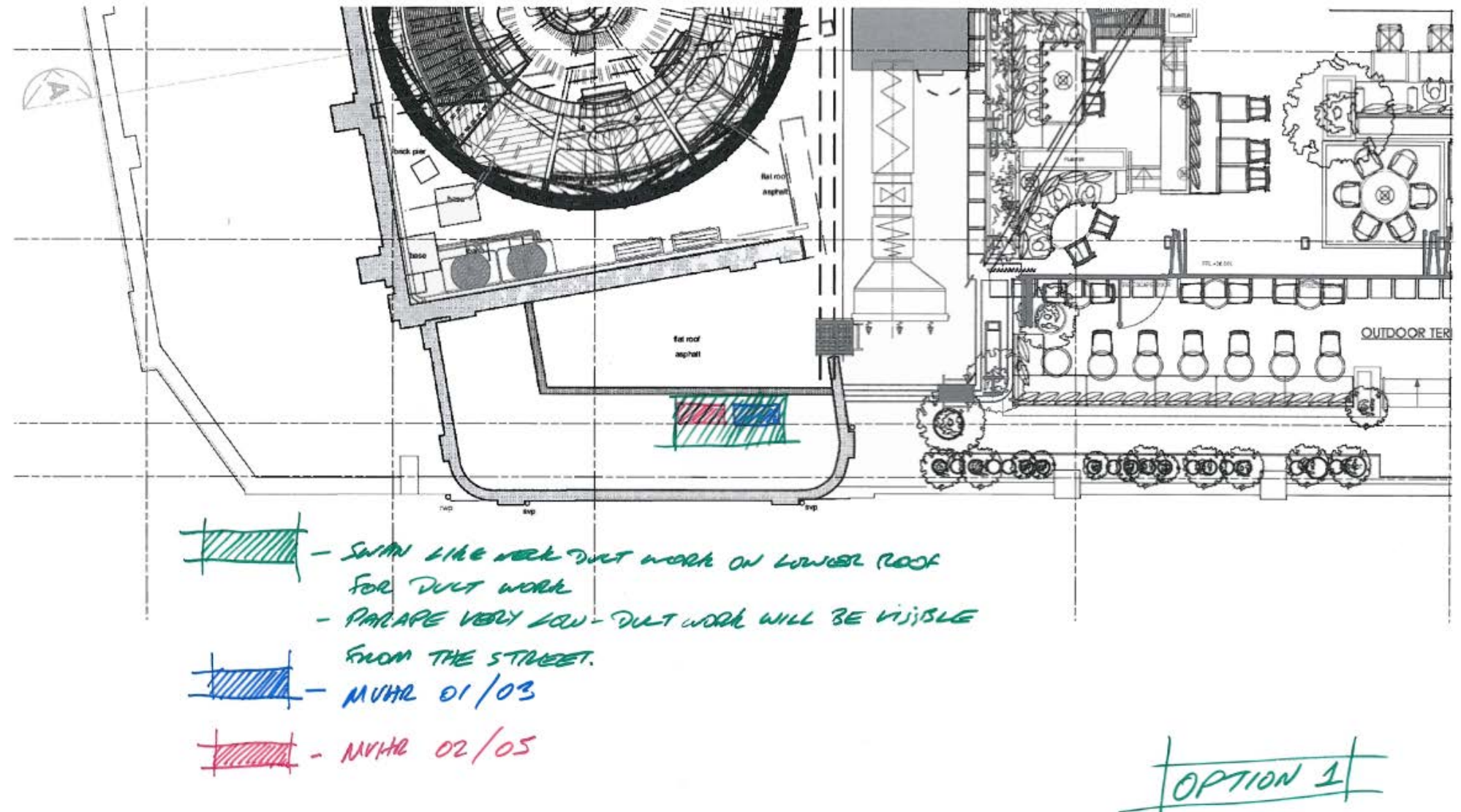


Image 5: RED area shows potentially duct penetration through roof slab.

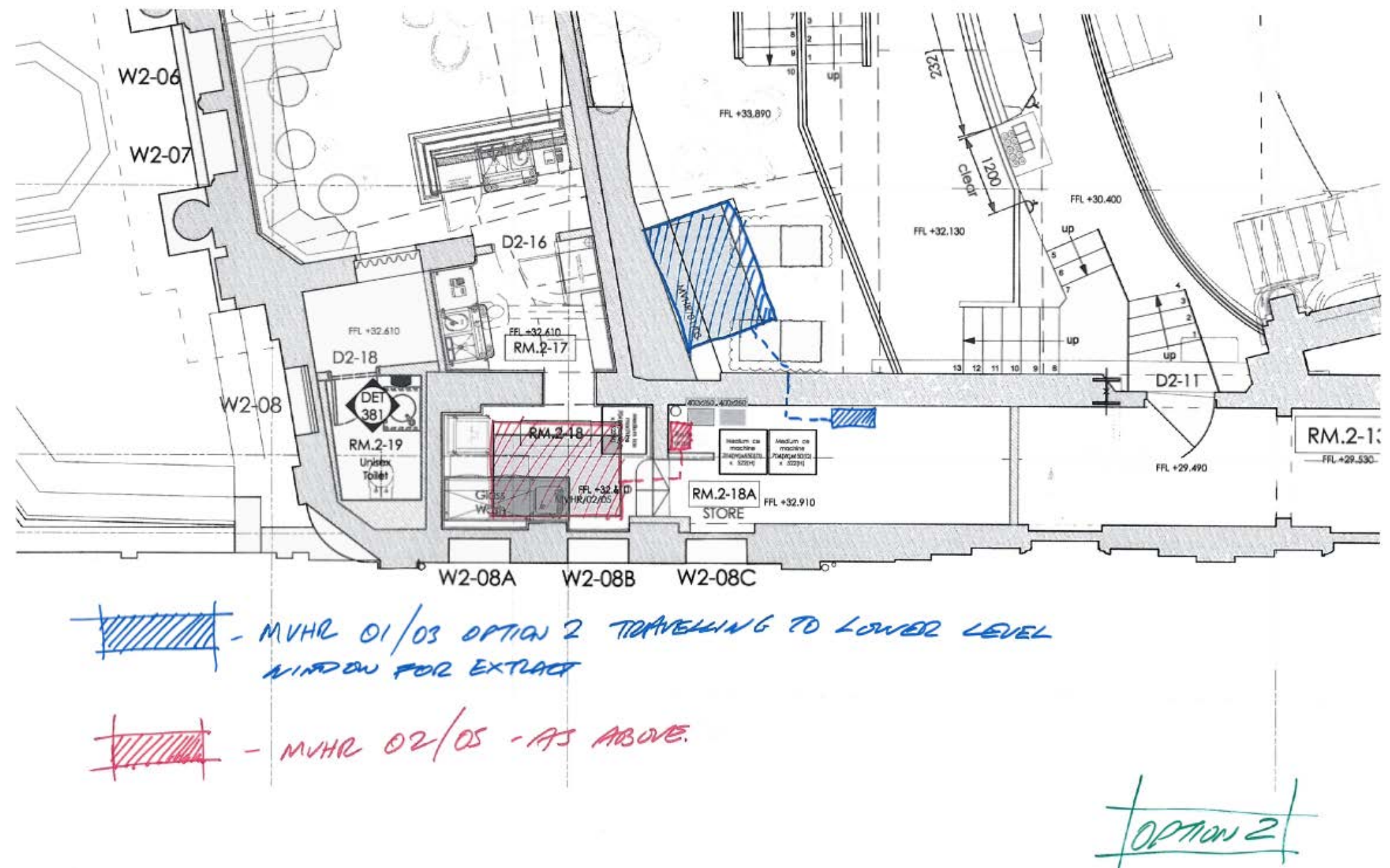


DUCTS TO TRAVEL TO LOWER ROOM - Option 2

1. Option TWO



Image 6: Current location of MVHR 01/03 shown in Blue, this is currently now closed in by new listed decorative ceilings.

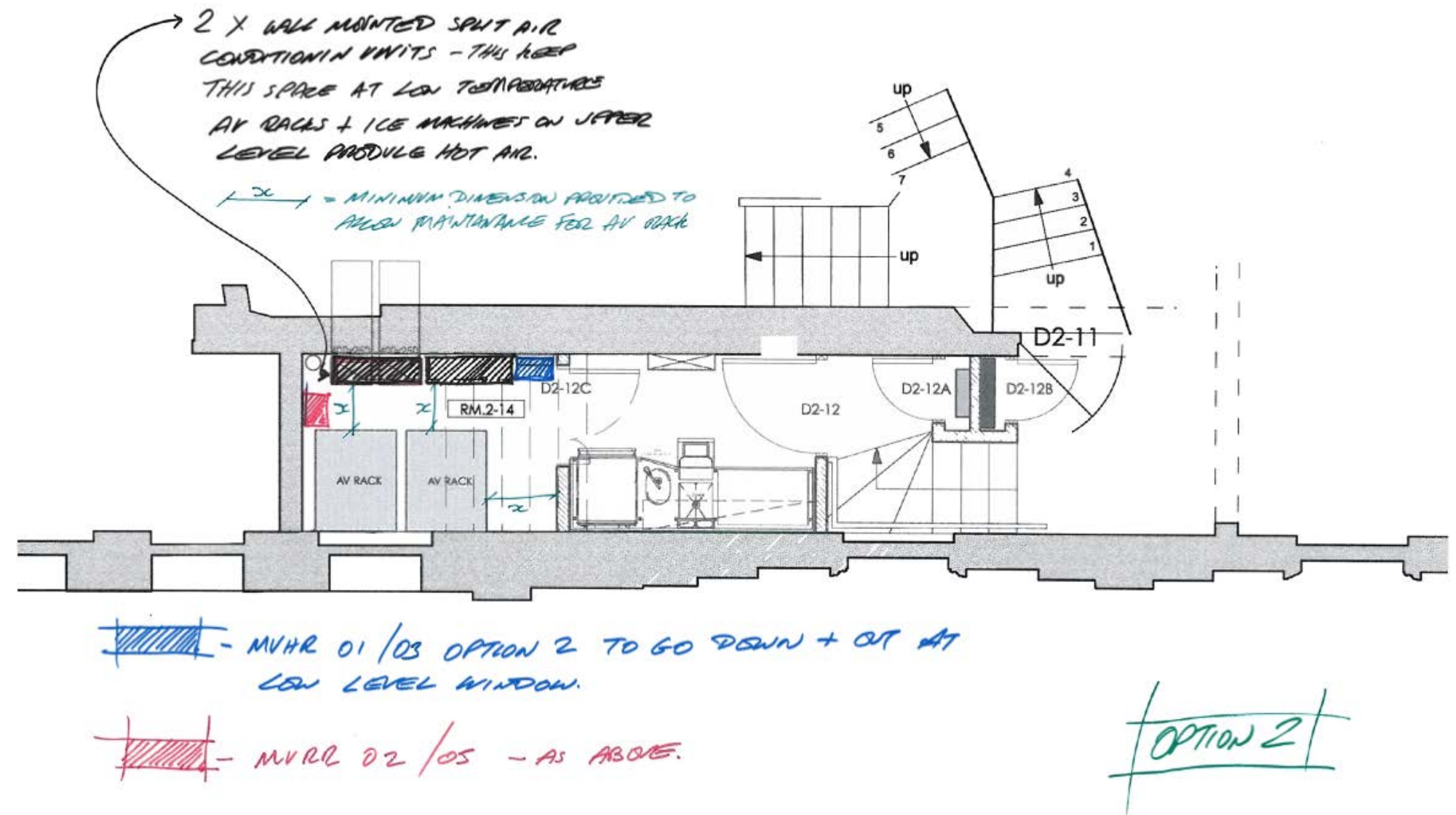


DUCTS TO TRAVEL TO LOWER ROOM - Option 2

1. Option one



Image 6: Window in corridor below the AV room
We cannot penetrate these windows as they are listed painted glass. Please refer to the image below. Therefore we would have to go to a level below.

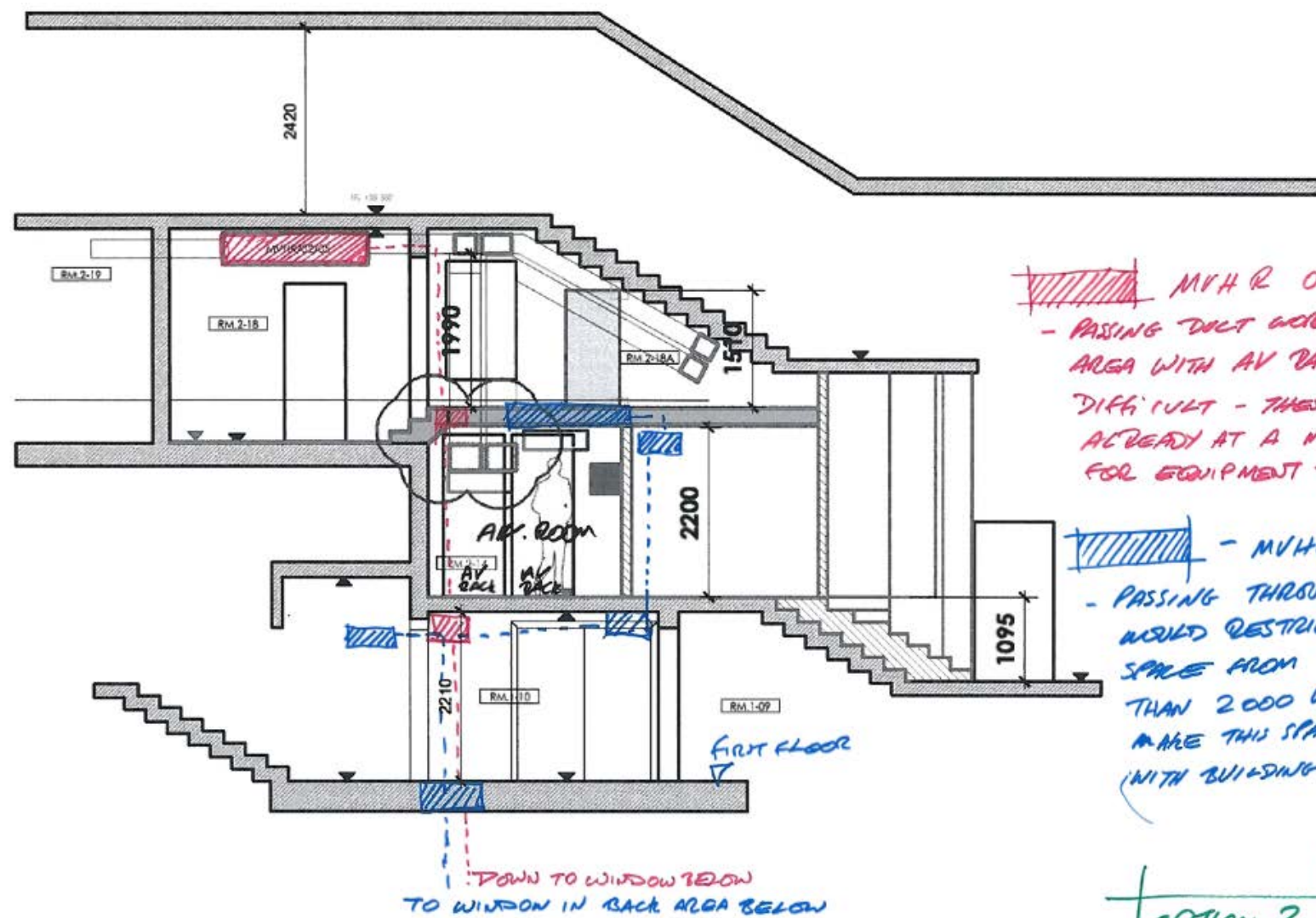
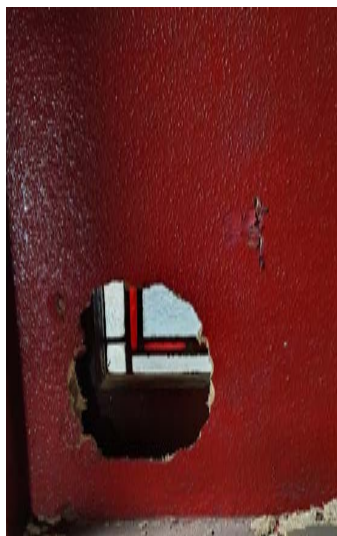


DUCTS TO TRAVEL TO LOWER ROOM - Option 2

1. Option one



Image 6: Window in corridor RM – 10 below the AV room in first floor shown on sketch.
We cannot make opening on these windows as they are listed painted glass. Therefore, we would have to go to a level below. Please see comments below on this option from consultants.



MVR 02/05
- PASSING DUCT WORK IN RESTRICTED AREA WITH AV RACKS SEEMS TO BE DIFFICULT - THESE AREAS ARE ALREADY AT A MAXIMUM CAPACITY FOR EQUIPMENT + MAINTENANCE.

MVR 01/03
- PASSING THROUGH FIRST FLOOR WOULD RESTRICT THE SPACE FROM 2210 TO LESS THAN 2000 WHICH WOULD BE MAKE THIS SPACE NON COMPLIANT WITH BUILDING REGULATIONS.

OPTION 2