

General Notes

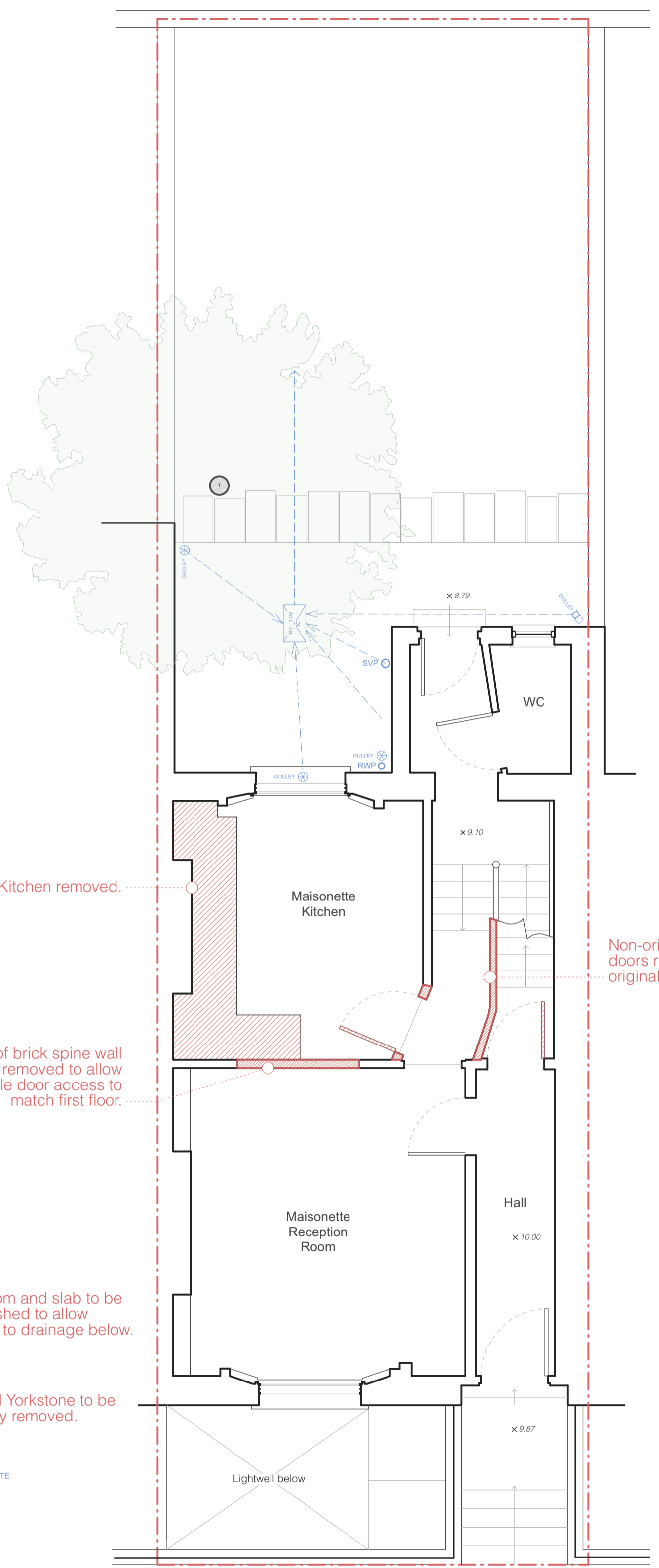
- All dimensions to be verified on site
- To be read in conjunction with all relevant documents
- In the event of discrepancy notify the Architect immediately
- All steel structural elements to be finished with intumescent coating, 30 minutes fire resistance. For all structural elements and connection see SE drawings.
- This document is copyright of Hugh Cullum Architects Ltd

Issue Status

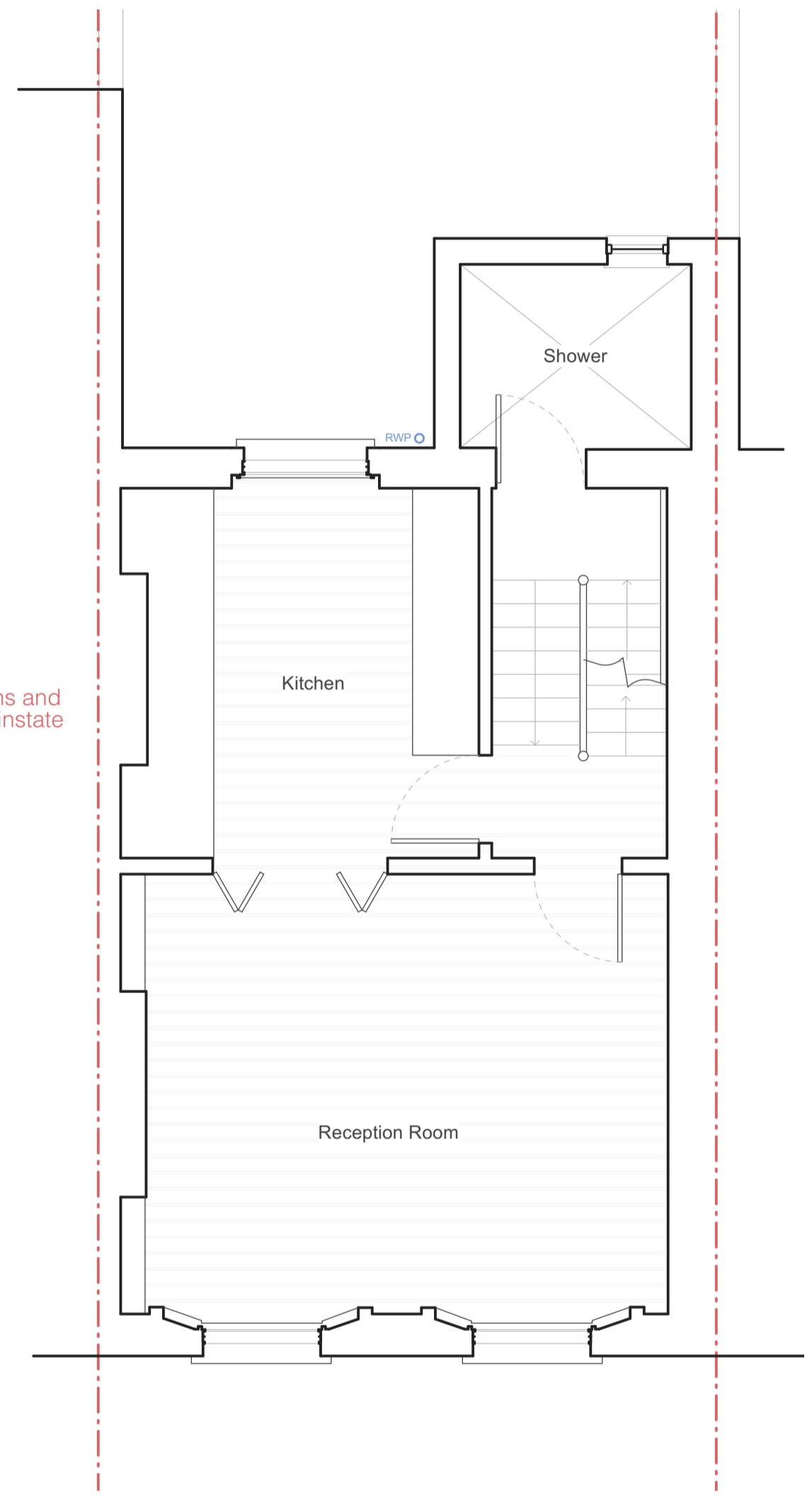
- SK Sketch
- T Tender
- P Permissions
- D Design
- E Existing Condition
- C Contract

Latest Revisions

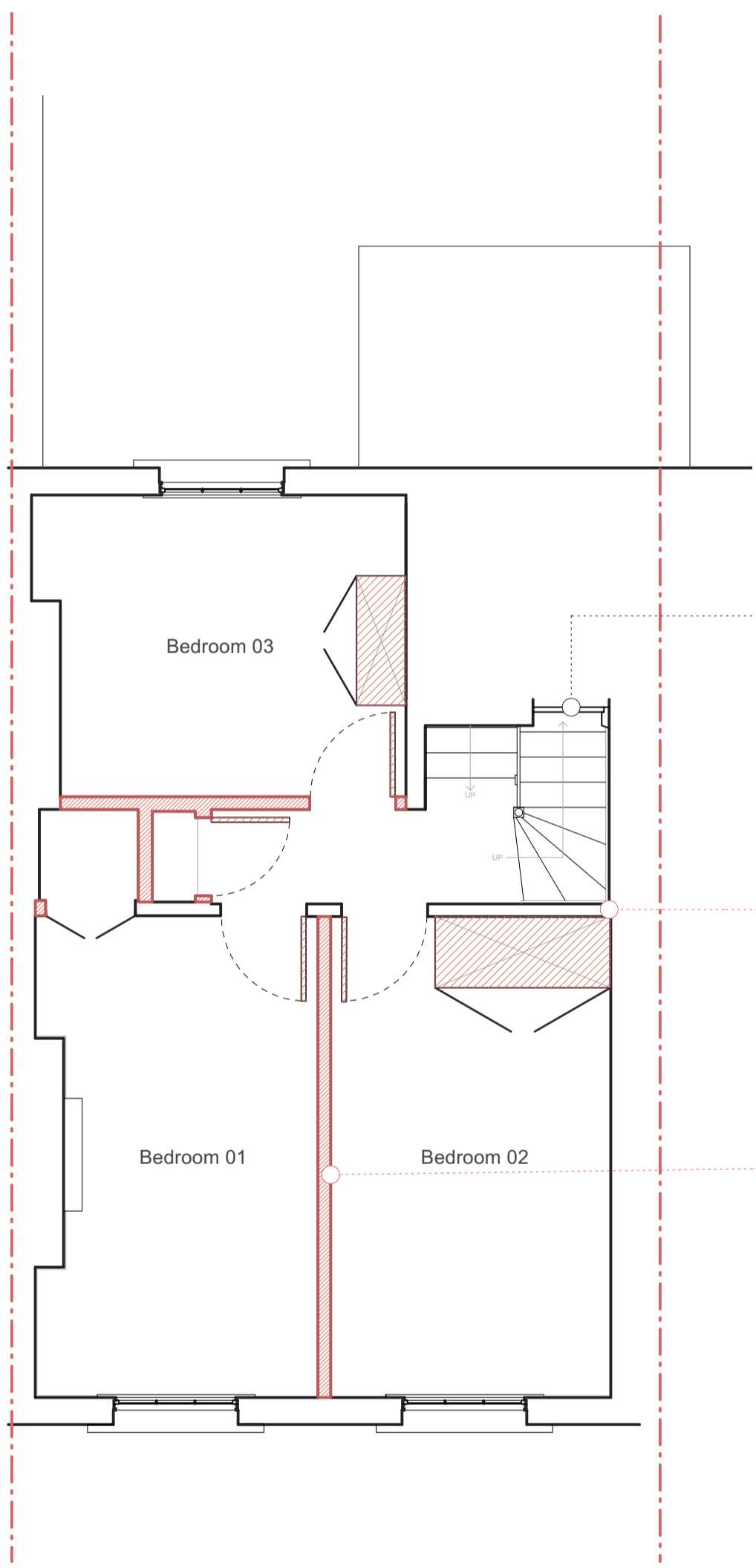
REV	NOTE	DATE	DRAWN



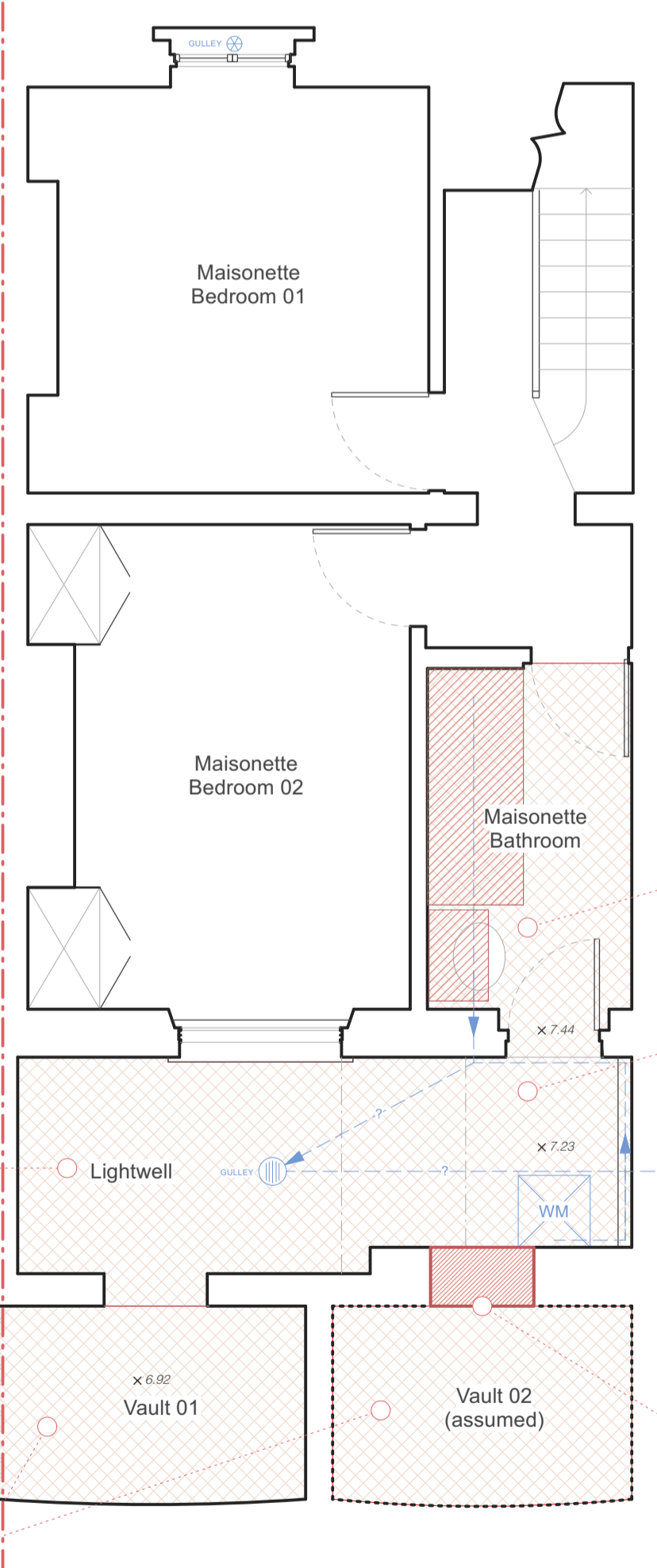
B GF Plan
Scale: 1:50 @ A1



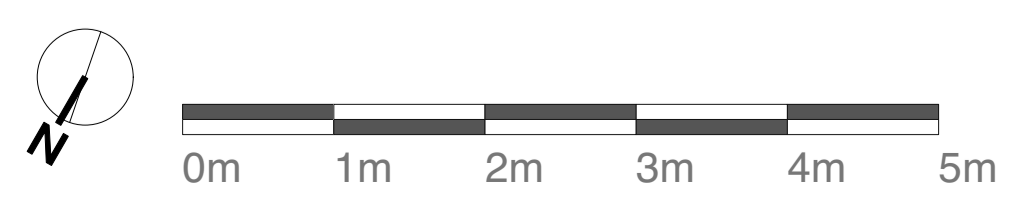
C 1F Plan
Scale: 1:50 @ A1



D 2F Plan
Scale: 1:50 @ A1



A LGF Plan
Scale: 1:50 @ A1



HUGH CULLUM ARCHITECTS LTD
30 Calthorpe Street
As Existing
General Arrangement
D - PLAN - All Plans
Scale at A1: 1:50
Published 17/06/2024
CS030 - D001 ()