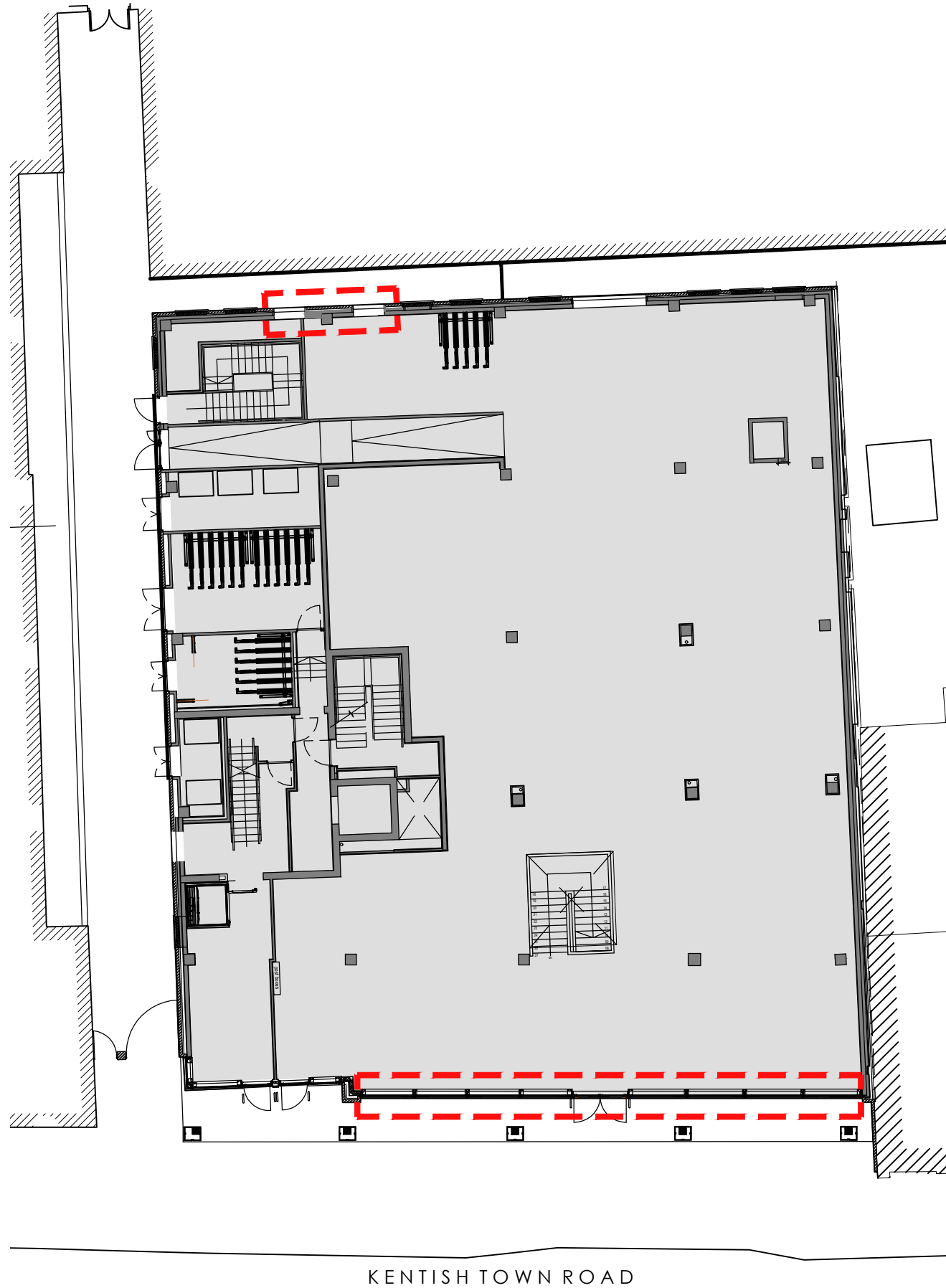


The Harris Group Ltd does not accept liability for any deviation to our drawings or specification. This Drawing is copyright and may not be reproduced in whole or part without written authority.

Rev	Date	Description	Drawn	Chk'd
P01	23/08/24	General Amendment	KB	DRW



KEY:

— APPLICATION BOUNDARY LINE

This drawing has been prepared for submission to the relevant Local Authority as part of a Planning Application. It is not intended to assist with the pricing of any elements.

For Structural details refer to the Structural & Civil Engineers detailed design drawings & specifications.

For M&E information, refer to the M&E Engineers and sub contractor's design drawings & specifications.

For Health & Safety information, refer to the Designers Risk Assessments. This drawing is copyright and may not be reproduced in whole or part without written authority.



Architecture  
Masterplanning  
Interior Design

www.harrispartnership.com  
Wakefield Manchester Milton Keynes Reading London Harrogate

Client

AVISION YOUNG

Project Title

PROPOSED RETAIL UNIT

152-156 KENTISH TOWN ROAD  
LONDON  
NW1 9QB

Drawing Title

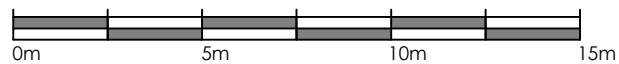
EXISTING GROUND FLOOR PLAN

Drawn	Checked	Scale @A3	BIM Status	Date
JT	DRW	1:200	NA	07/24

Drawing Status	Rev.	THP Project No
PLANNING	P01	20048

Project No.	Originator	Volume	Level	Type	Role	Number
20048	THPR	XX	ZZ	DR	A	1001

01 EXISTING GROUND FLOOR PLAN  
1:200



KENTISH TOWN ROAD