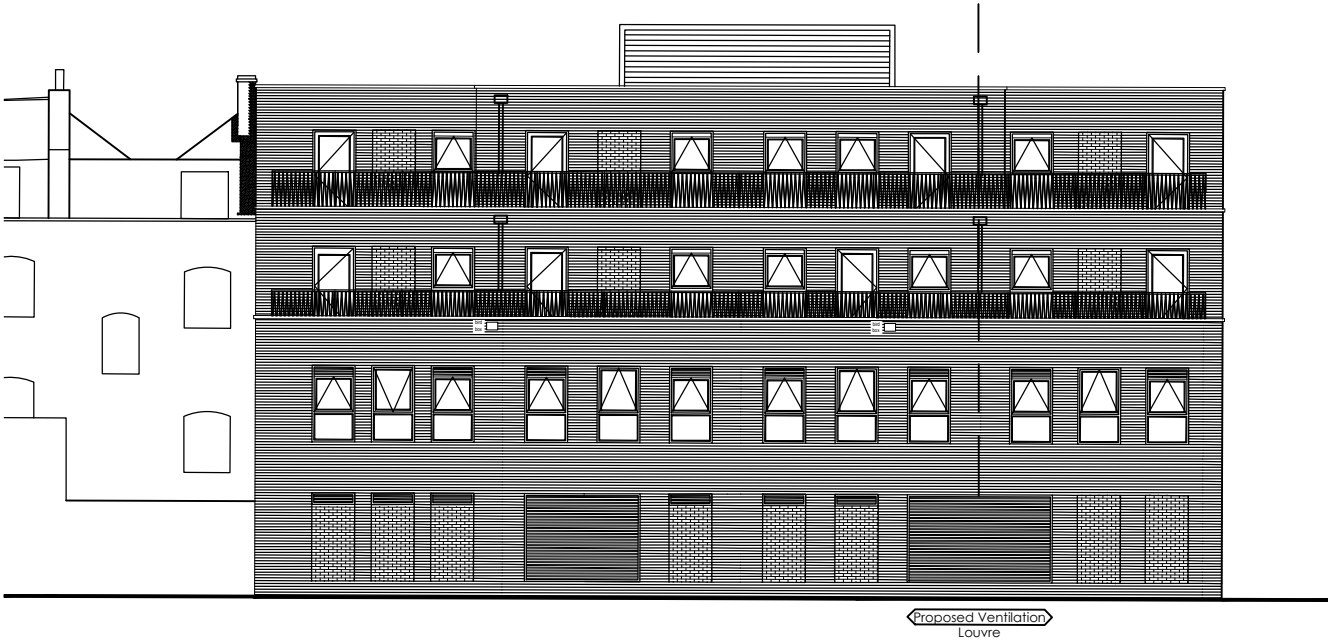


Rev	Date	Description	Drawn	Chk'd
P01	23/08/24	General Amendment	KB	DRW



01 PROPOSED SIDE ELEVATION AA
1:200



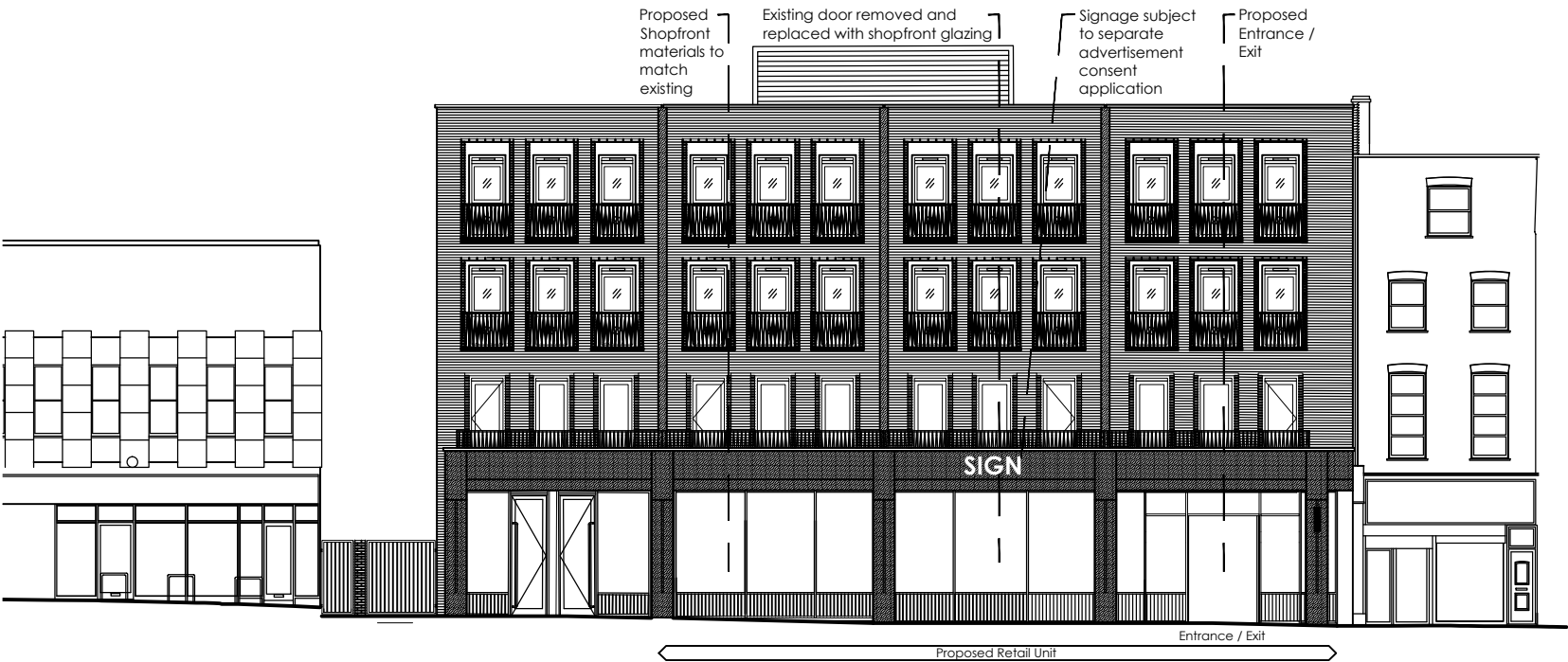
02 PROPOSED REAR ELEVATION BB
1:200

This drawing has been prepared for submission to the relevant Local Authority as part of a Planning Application. It is not intended to assist with the pricing of any elements.

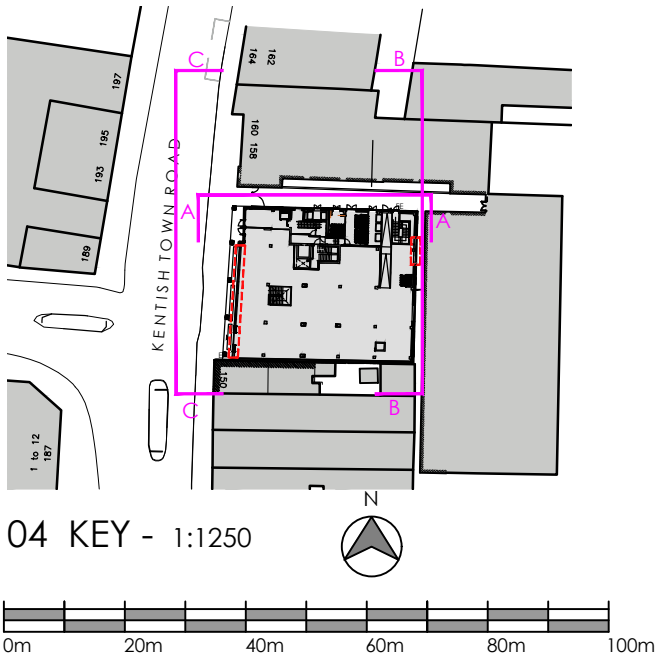
For Structural details refer to the Structural & Civil Engineers detailed design drawings & specifications.

For M&E information, refer to the M&E Engineers and sub contractor's design drawings & specifications.

For Health & Safety information, refer to the Designers Risk Assessments. This drawing is copyright and may not be reproduced in whole or part without written authority.



03 PROPOSED FRONT ELEVATION CC
1:200



THE HARRIS PARTNERSHIP

Architecture
Masterplanning
Interior Design

www.harrispartnership.com

Wakefield Manchester Milton Keynes Reading London Harrogate

Client
AVISION YOUNG

Project Title
PROPOSED RETAIL UNIT

152-156 KENTISH TOWN ROAD
LONDON
NW1 9QB

Drawing Title
PROPOSED ELEVATIONS

Drawn	Checked	Scale @A3	BIM Status	Date
JT	DRW	1:200/1250	NA	07/24

Drawing Status	Rev.	THP Project No
PLANNING	P01	20048

Project No.	Originator	Volume	Level	Type	Role	Number
20048	THPR	XX	EL	DR	A	1011