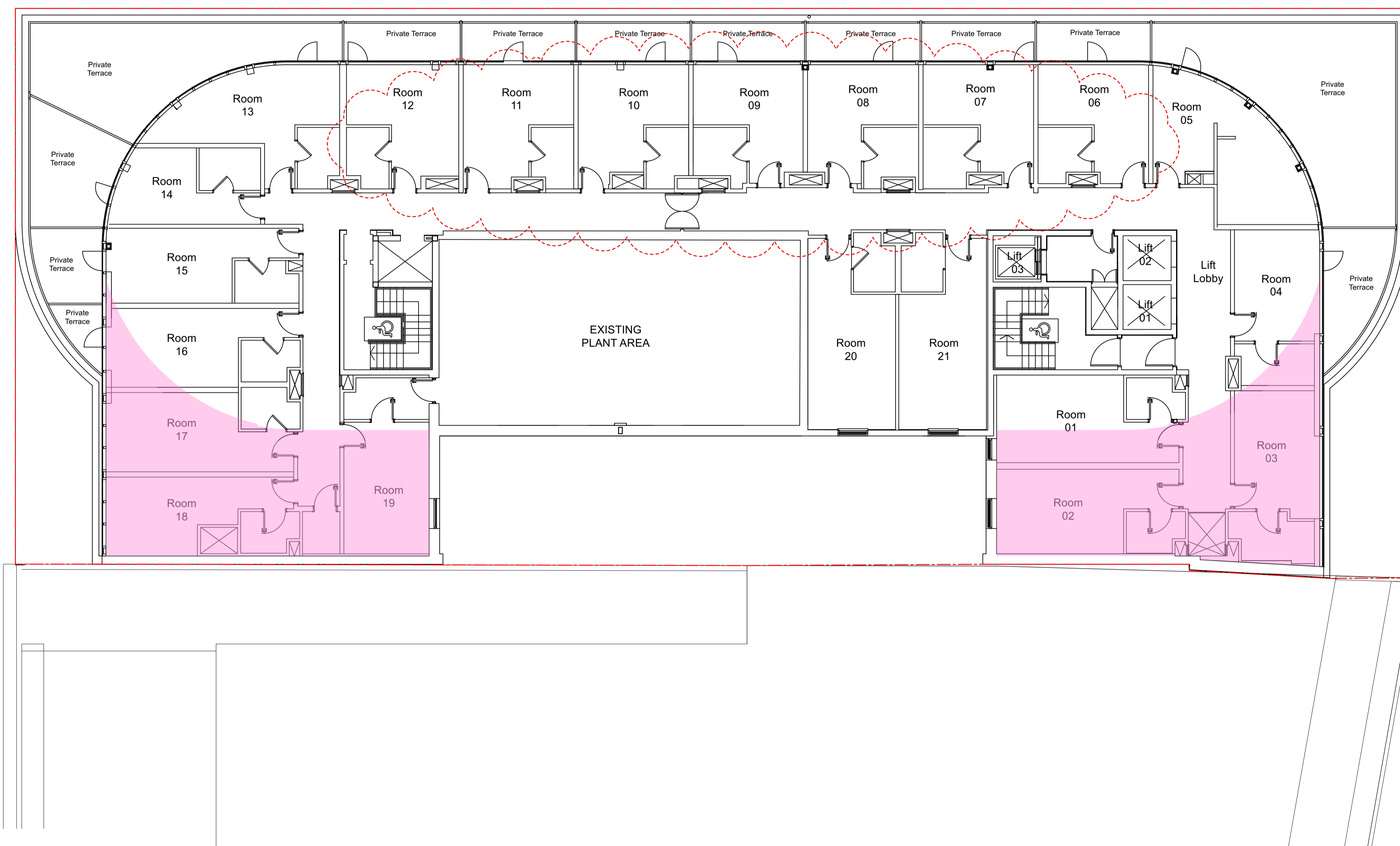


This drawing is the copyright of Axiom Architects. It is for planning application purposes only and may not be reproduced in whole or in part without permission. Drawings lodged for planning approval may be reproduced by the Planning Authority in accordance with the Copyright (Material Open to Public Inspection) (Marking of Copies of Plans and Drawings) Order 1990 and must carry the relevant copyright restriction note. Scaling from this drawing should only be carried out from a print at the scale and size specified within the title block. Responsibility for ensuring correct size reproduction remains with the reader.

Application Boundary

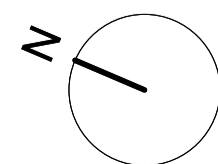
Regent's Canal

Jamestown Road



Proposed Fifth Floor Plan  
Scale 1:100 @A1

0m 1 5 10



Rev	Date	Description	By	Chk
P2	27/08/24	Highlighted Amends to Camden comments for S73 App	AD	
P1	10/05/24	Configuration updated to confirm additional Bedroom provision	AD	



1 Brooklands Yard Southover High Street Lewes East Sussex BN7 1HU  
Tel. 01273 479434 www.axiomarchitects.co.uk

Client  
**4C Group**

Project  
Holiday Inn Camden Town  
Proposed Extension

Drawing  
**Fifth Floor Plan  
Proposed Drawing**

Scale 1:100@A1 Date 09/03/23 Drawn ad Checked

Drawing No. Revision

**1808 A 100 003P2**

Status  
**PLANNING**