

Existing Boundary Wall Plan

**robsonwalsh**

Chartered Surveyors  
Survey House, 19f Park Parade, London NW10 4JH  
[www.robsonwalsh.com](http://www.robsonwalsh.com)

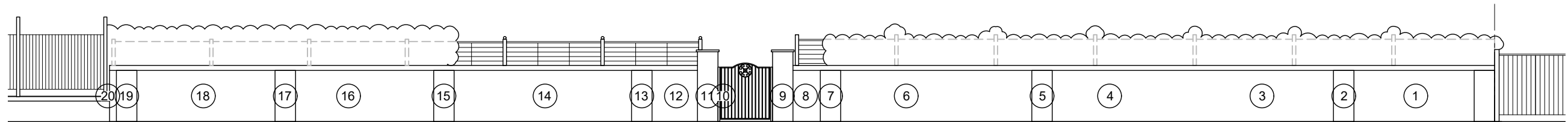
©

1 & 6 Keats Close, Grove,  
London. NW3 2RP

Drawn; **JM** Checked *J5*

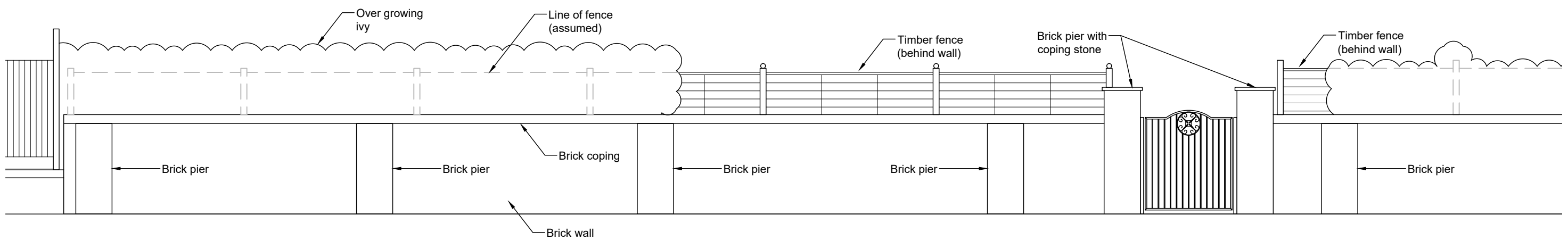
Rev A 1-200 @ A3 15 Jul 24

Admiral Property  
Partnership Ltd

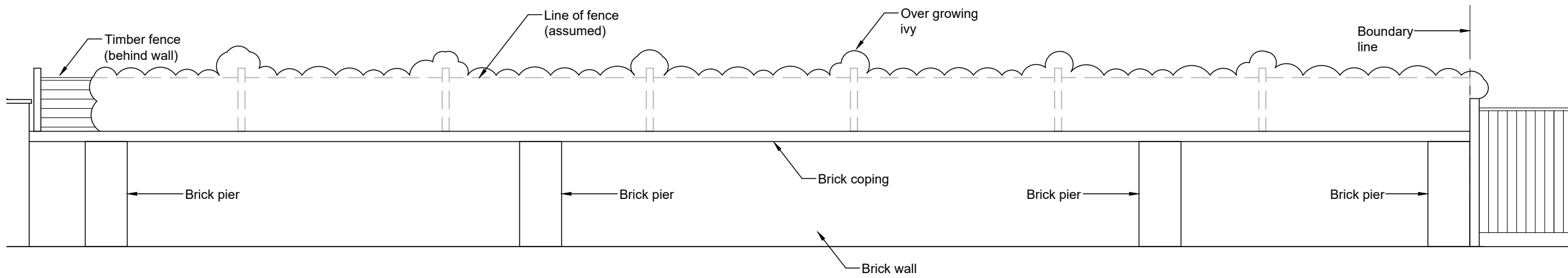


ELEVATION 1  
(1:100)

① DENOTES PHOTO REFERENCES



ELEVATION 1  
(1:50)



ELEVATION 1  
(1:50)



Scale 1:50 @ A3



Scale 1:100 @ A3



Existing Boundary Wall  
Elevation 1

**robsonwalsh**

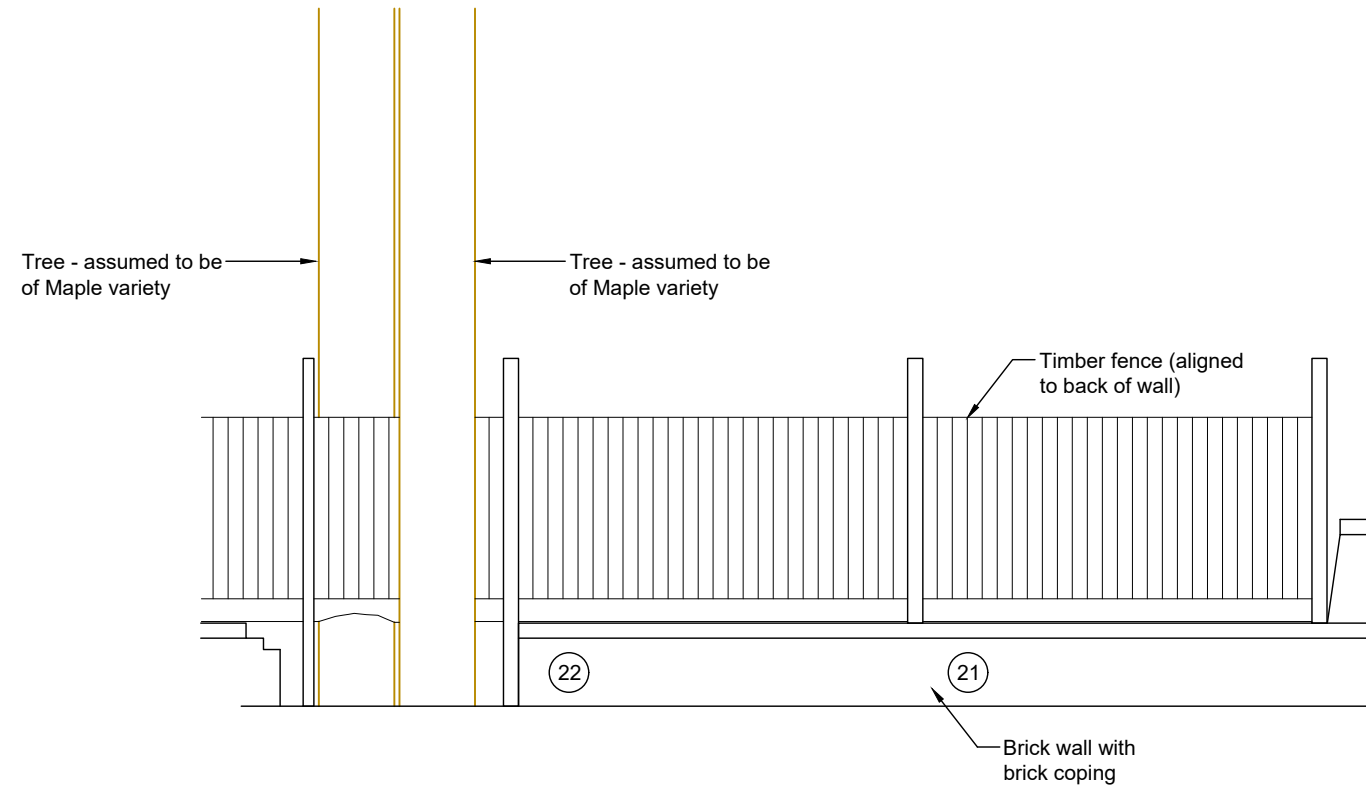
Chartered Surveyors  
Survey House, 19f Park Parade, London NW10 4JH  
[www.robsonwalsh.com](http://www.robsonwalsh.com)

1 & 6 Keats Close, Grove,  
London. NW3 2RP

Drawn; **JM** Checked *J5*

Rev A As Shown @ A3 15 Jul 24

Admiral Property  
Partnership Ltd



ELEVATION 2  
(1:50)

22 DENOTES PHOTO REFERENCES



Existing Boundary Wall  
Elevation 2

**robsonwalsh**

Chartered Surveyors  
Survey House, 19f Park Parade, London NW10 4JH  
[www.robsonwalsh.com](http://www.robsonwalsh.com)

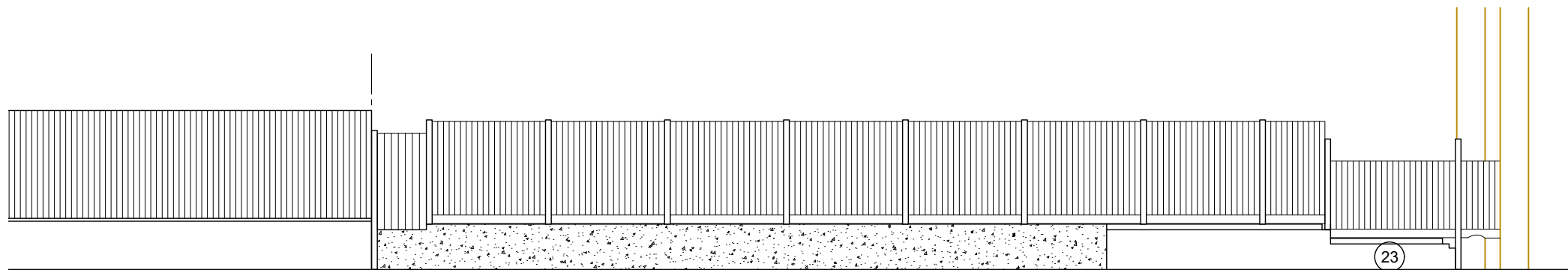
©

1 & 6 Keats Close, Grove,  
London. NW3 2RP

Drawn; **JM** Checked *J5*

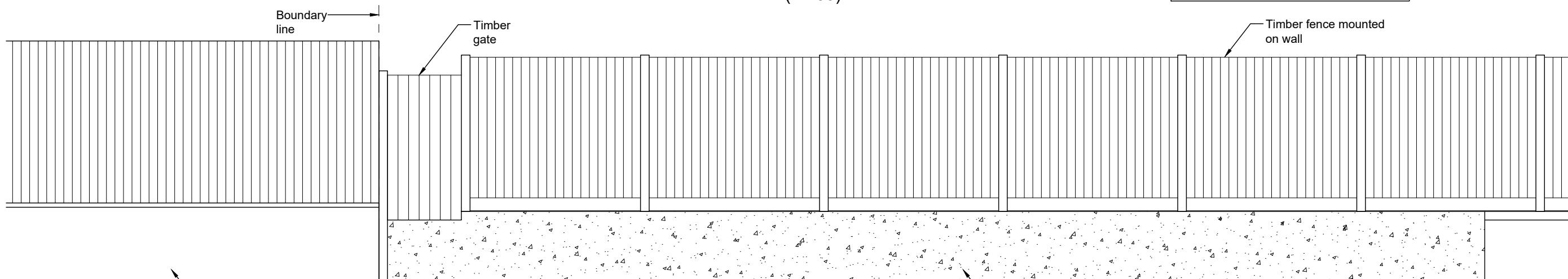
Rev A 1:50 @ A3 15 Jul 24

Admiral Property  
Partnership Ltd

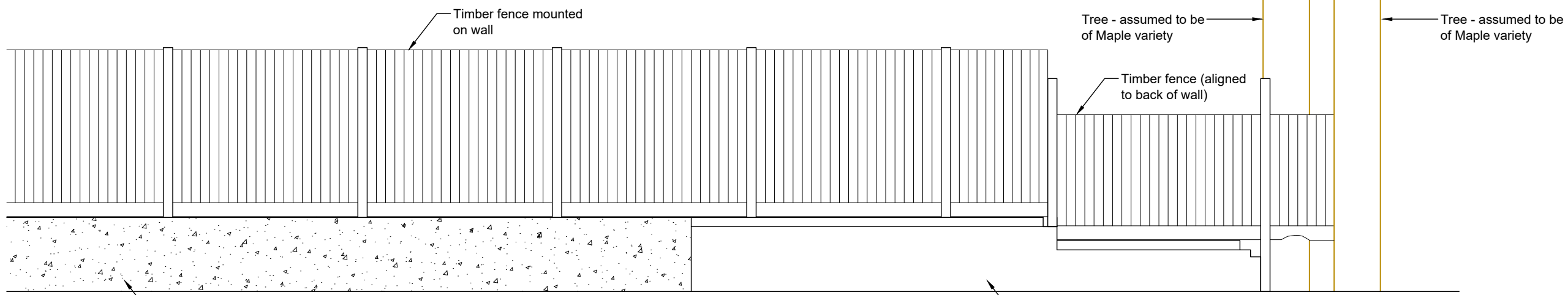


ELEVATION 3  
(1:100)

23 DENOTES PHOTO REFERENCES



ELEVATION 3  
(1:50)



ELEVATION 3  
(1:50)



Scale 1:50 @ A3



Scale 1:100 @ A3



Existing Boundary Wall  
Elevation 3

**robsonwalsh**

Chartered Surveyors  
Survey House, 19f Park Parade, London NW10 4JH  
www.robsonwalsh.com

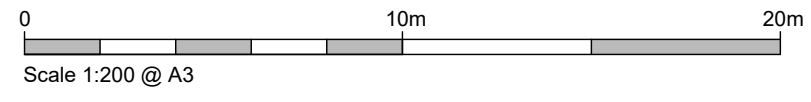
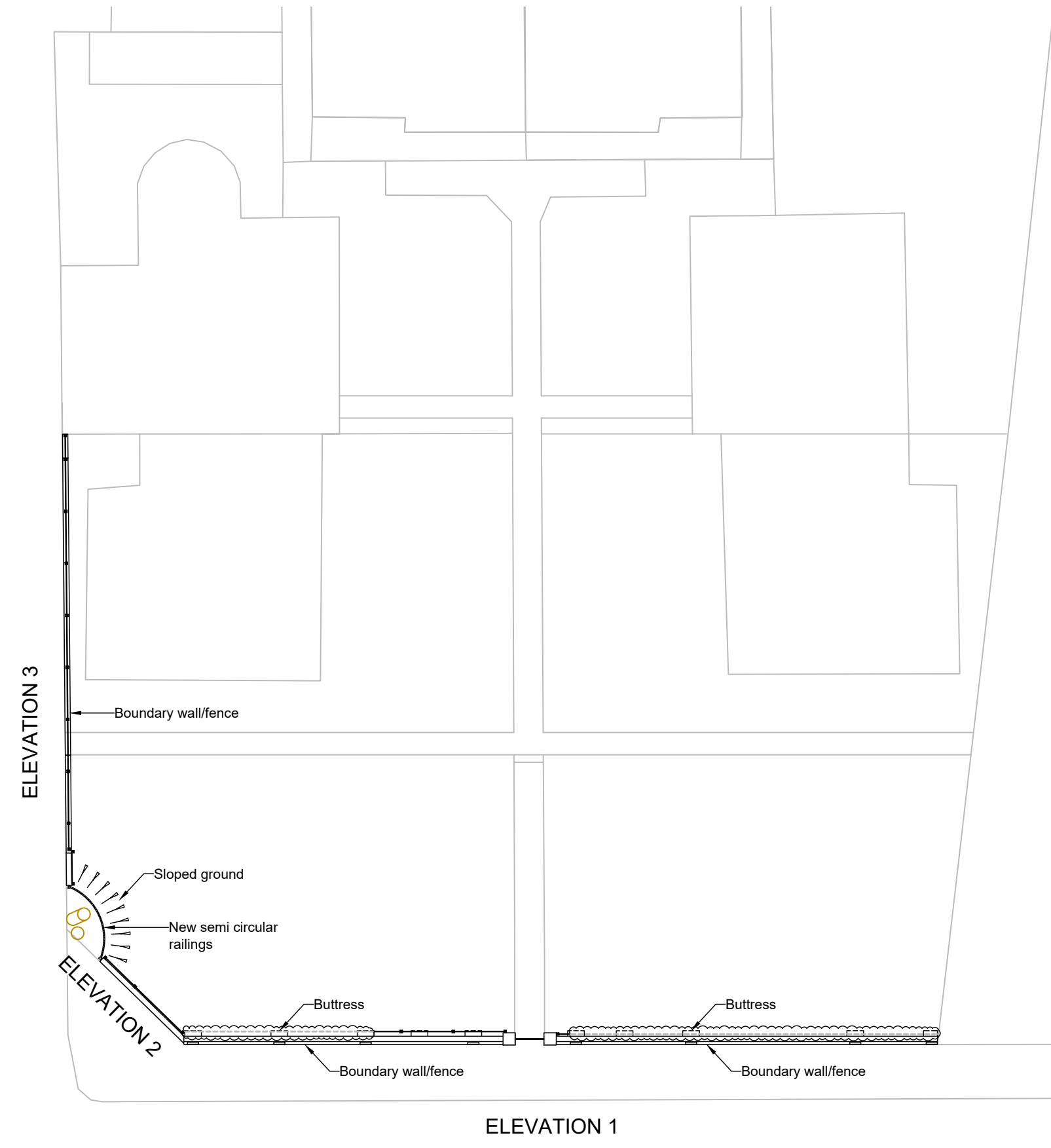
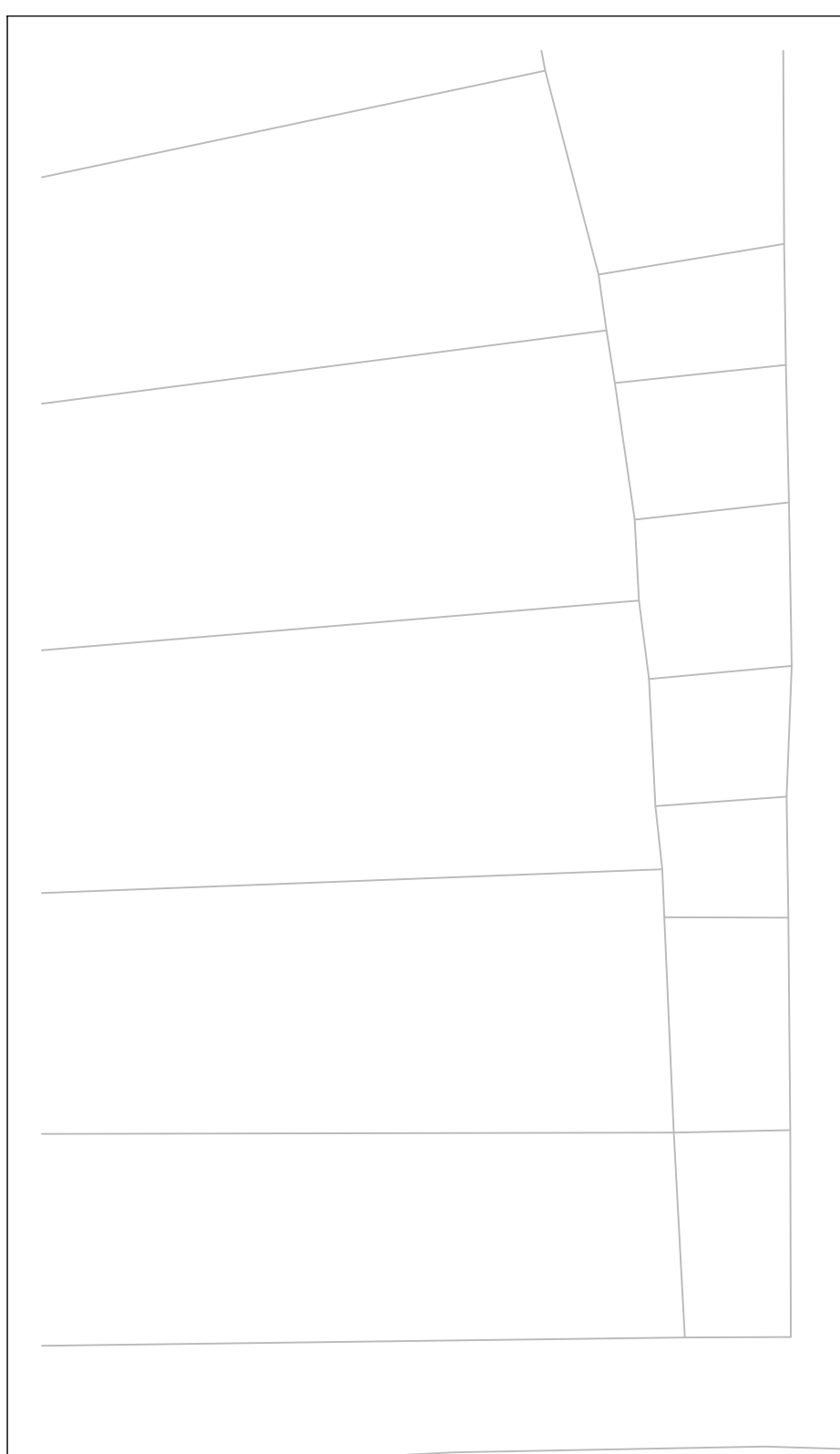
©

1 & 6 Keats Close, Grove,  
London. NW3 2RP

Drawn; **JM** Checked *J5*

Rev A As Shown @ A3 15 Jul 24

Admiral Property  
Partnership Ltd



Proposed Boundary Wall Plan

**robsonwalsh**

Chartered Surveyors  
 Survey House, 19f Park Parade, London NW10 4JH  
[www.robsonwalsh.com](http://www.robsonwalsh.com)

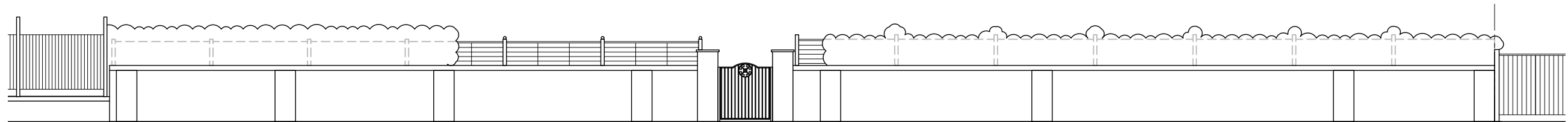
©

1 & 6 Keats Close, Grove,  
 London. NW3 2RP

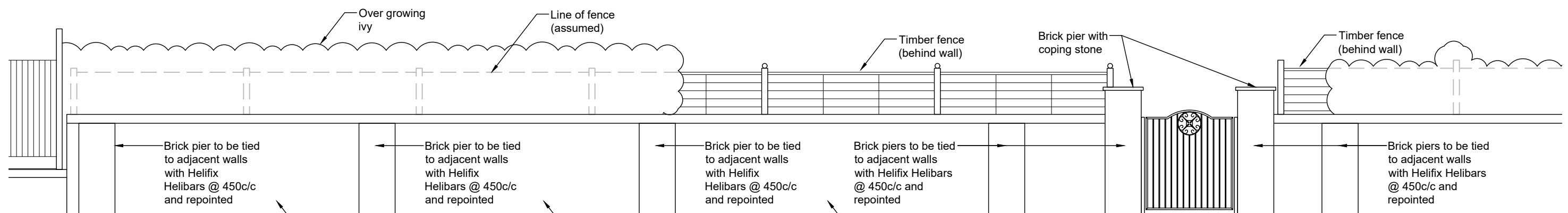
Drawn; **JM** Checked *J5*

- 1-200 @ A3 8 Aug 24

Admiral Property  
 Partnership Ltd

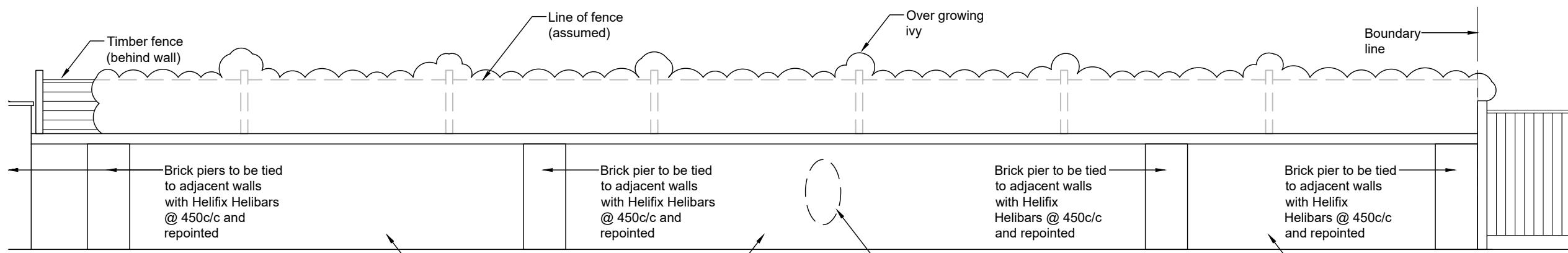


ELEVATION 1  
(1:100)



ELEVATION 1  
(1:50)

NOTE:  
Rear wall and buttresses to be  
repointed where accessible



ELEVATION 1  
(1:50)

NOTE:  
Rear wall and buttresses to be  
repointed where accessible



Proposed Boundary Wall  
Elevation 1

**robsonwals**

Chartered Surveyors  
Survey House, 19f Park Parade, London NW10 4JH  
[www.robsonwalsh.com](http://www.robsonwalsh.com)

1 & 6 Keats Close, Grove,  
London. NW3 2RP

Drawn; **JM** Checked *J5*

- As Shown @ A3 08 Aug 24

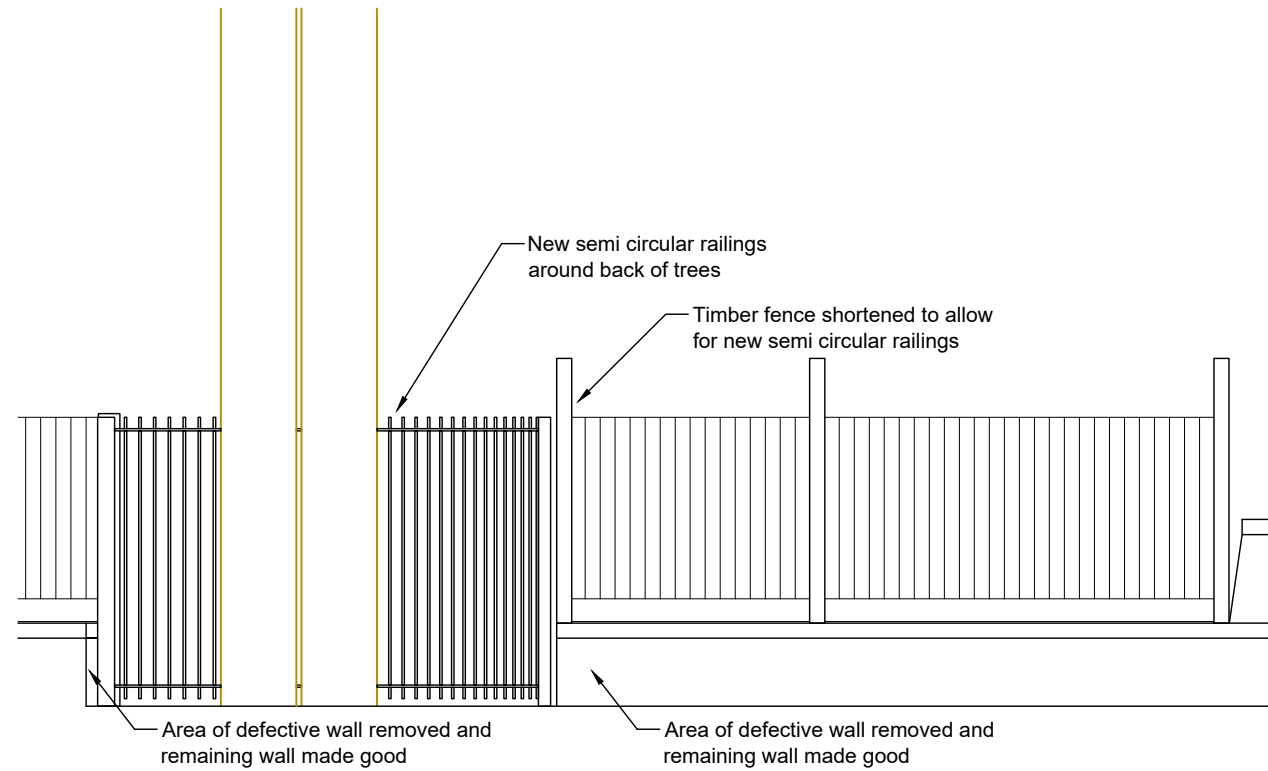
Admiral Property  
Partnership Ltd



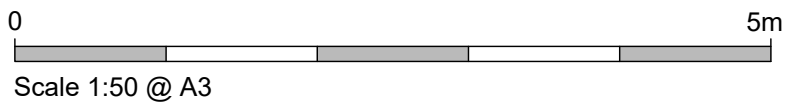
Scale 1:50 @ A3



Scale 1:100 @ A3



ELEVATION 2  
(1:50)



Proposed Boundary Wall  
Elevation 2



Chartered Surveyors  
Survey House, 19f Park Parade, London NW10 4JH  
[www.robsonwalsh.com](http://www.robsonwalsh.com)

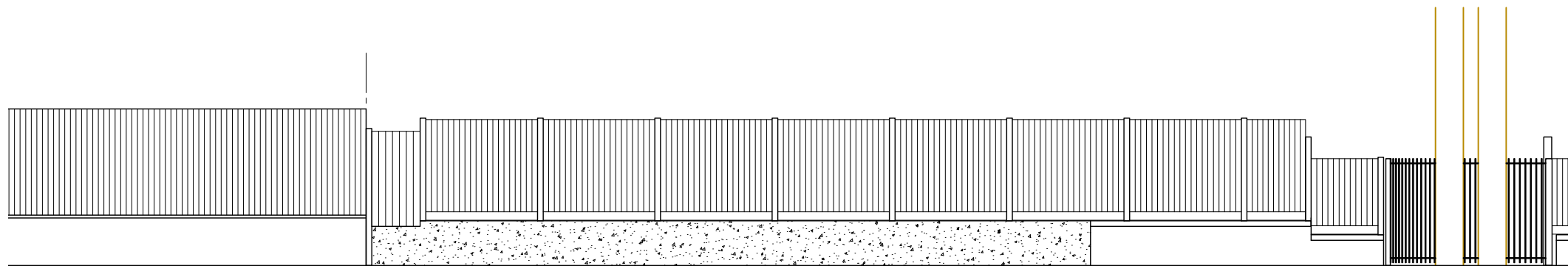
©

1 & 6 Keats Close, Grove,  
London. NW3 2RP

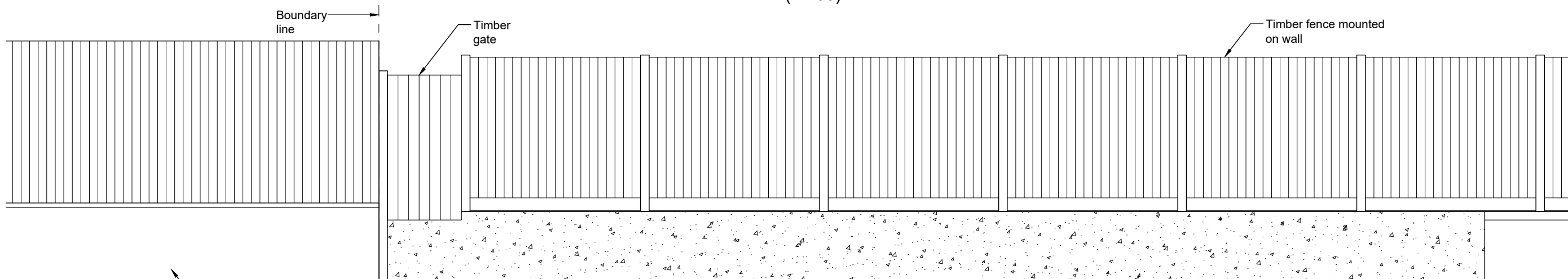
Drawn; **JM** Checked *J5*

- 1:50 @ A3 08 Aug 24

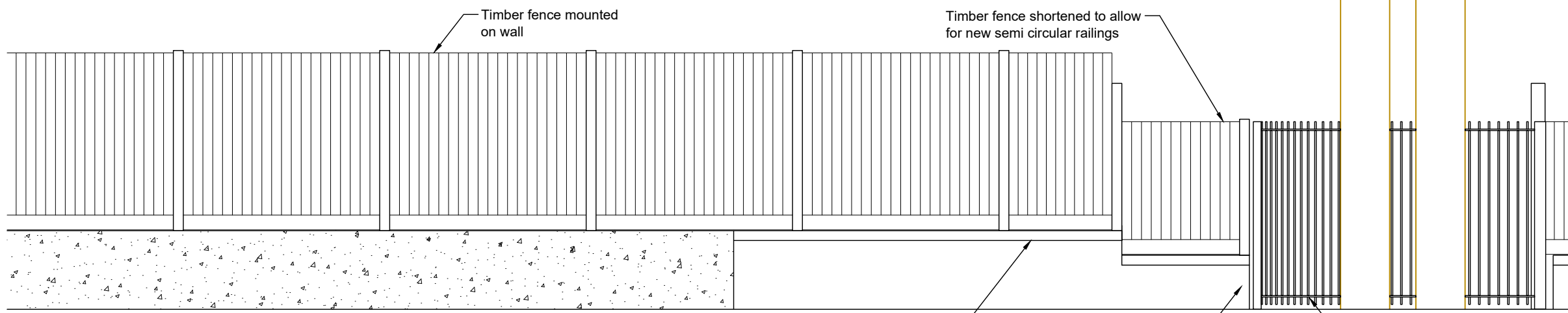
Admiral Property  
Partnership Ltd



ELEVATION 3  
(1:100)



ELEVATION 3  
(1:50)



ELEVATION 3  
(1:50)



Scale 1:50 @ A3



Scale 1:100 @ A3



Proposed Boundary Wall  
Elevation 3

**robsonwalsh**

Chartered Surveyors  
Survey House, 19f Park Parade, London NW10 4JH  
[www.robsonwalsh.com](http://www.robsonwalsh.com)

©

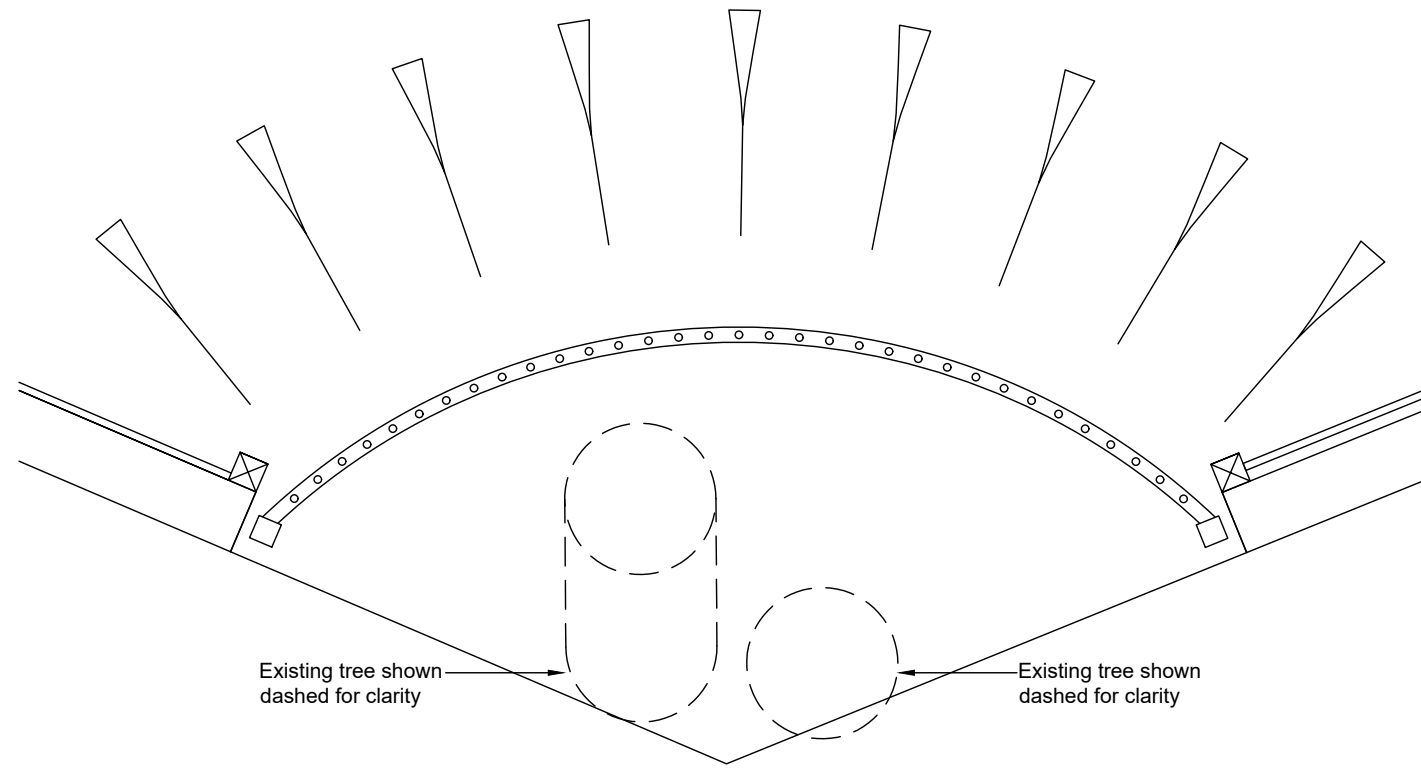
1 & 6 Keats Close, Grove,  
London. NW3 2RP

Drawn; **JM** Checked *J5*

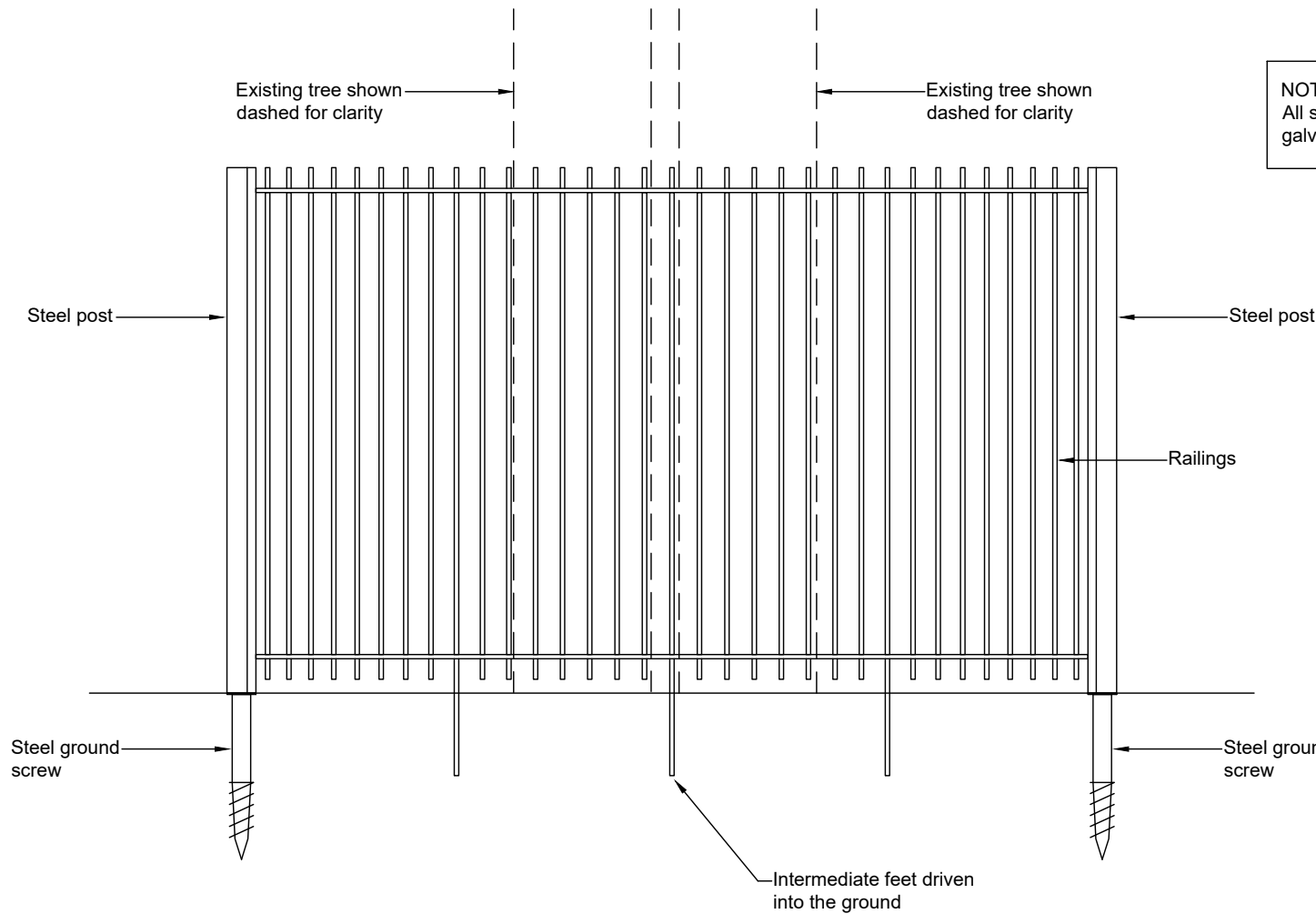
- As Shown @ A3 08 Aug 24

Admiral Property  
Partnership Ltd





PLAN



ELEVATION



Proposed Circular Railing  
Details

**robsonwalsh**

Chartered Surveyors  
Survey House, 19f Park Parade, London NW10 4JH  
[www.robsonwalsh.com](http://www.robsonwalsh.com)

1 & 6 Keats Close, Grove,  
London. NW3 2RP

Drawn; **JM** Checked *J5*

- 1:25 @ A3 08 Aug 24

Admiral Property  
Partnership Ltd