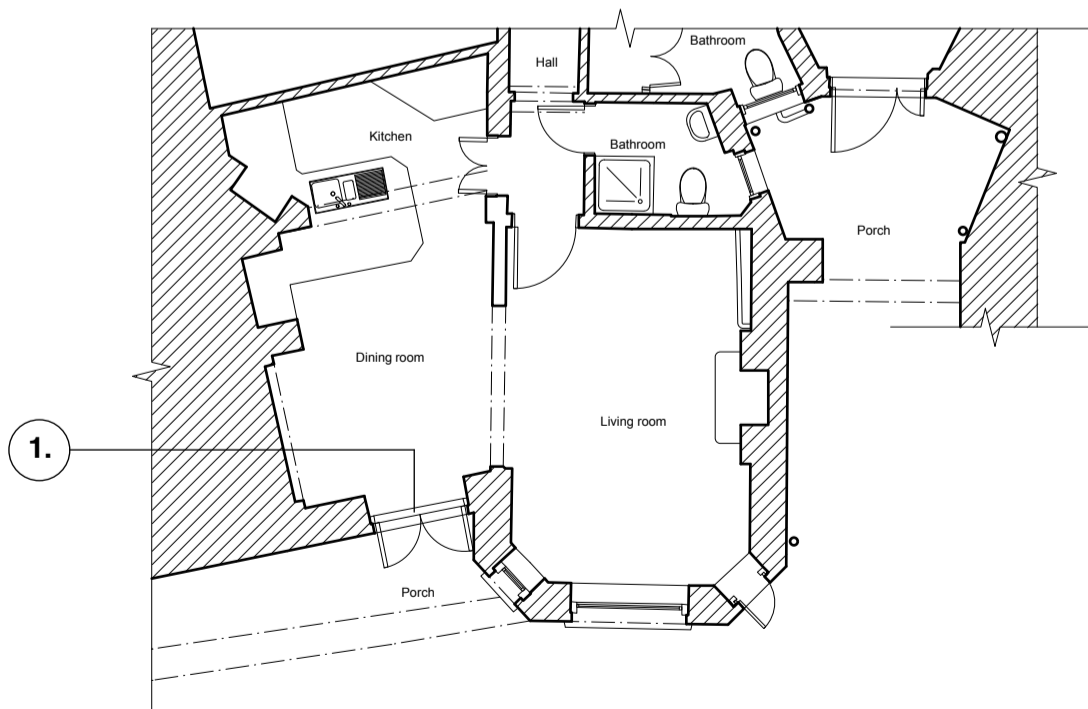




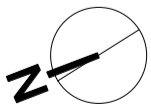
Proposed rear elevation

Key:

- Existing painted timber framed French doors to be upgraded with higher performance double glazed units. Cat flap to be removed. See drawings LIS 101 and LIS 201 for details



Proposed ground floor part-plan



0 1000 2000 3000 4000 5000 6000 mm



For planning	
LIS 200	Proposed rear elevation and ground floor part-plan
Scale 1:100 @ A3	57 Lissenden Gardens, London NW5 1PR
August 2024	
Appleton Weiner 19 Wallace Road London N1 2PG Telephone 020 7253 8387 <small>ALL DIMENSIONS TO BE CHECKED ON SITE. DISCREPANCIES TO BE REFERRED TO APPLETON WEINER. DO NOT SCALE OFF THIS DRAWING. ALL DRAWINGS RETAIN APPLETON WEINER COPYRIGHT ©</small>	