

PARSIFAL HOUSE

521 FINCHLEY ROAD
LONDON NW3 7BT

Front Gardens
Landscape Works Information



www.alladiosims.co.uk

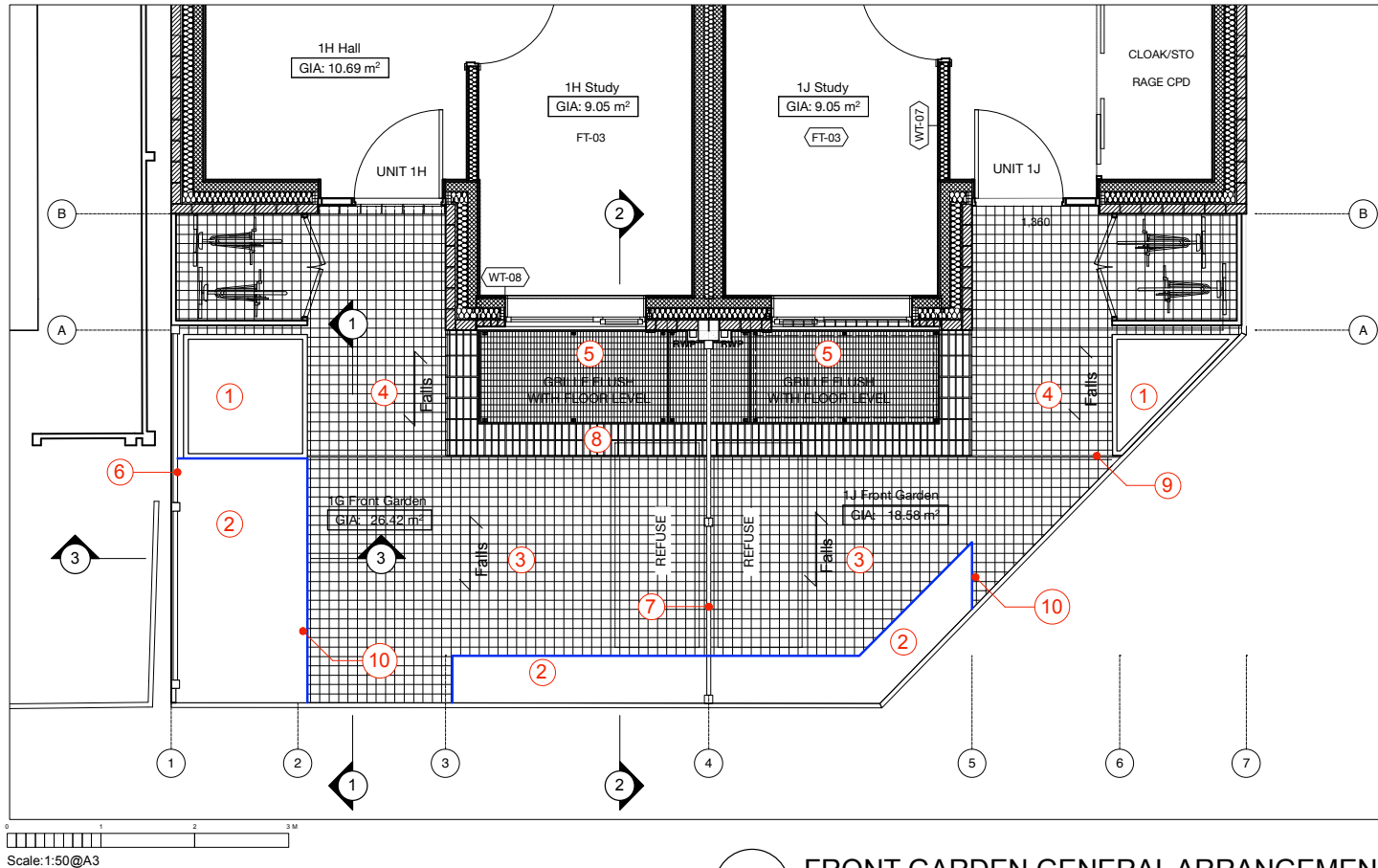
Contents

1. Site plan
2. Soft Landscaping
3. Soft Landscape Palette
4. Soft Landscape Plant Seasonal Chart
5. Hard Landscape Section 1:1 and Section 3:3
6. Hard Landscape Section 2:2
7. Hard Landscape Materials



1. Site Plan





FRONT GARDEN GENERAL ARRANGEMENT

Scale: 1:50

- ① Bespoke raised galvanised and powder coated steel planter. Supplied by lotagarden.com. Colour :TBC
- ② Planted areas set flush with paved area. Sub-grade forked loose and building rubble removed before topping up with Border mix soil to level 100mm below paving level. Finish with 50mm fine composted bark mulch.
- ③ Paved area over sub-grade - 100x100x40mm Portloe Graphite Limestone setts finished tumbled and brushed. From Lowarthpaving.co.uk or similar approved. Setts bedded on 100mm C7.5 lean mix concrete over 100-130mm compacted DTP1 sub-base (sub-base laid to 1:80 falls)
- ④ Paved area over basement roof construction - 100x100x40mm Portloe Graphite Limestone setts finished tumbled and brushed. From Lowarthpaving.co.uk or similar approved. Setts bedded directly on to waterproof finish of basement structure to architects detail (laid to 1:80 falls)
- ⑤ Galvanised steel grating over lightwell. Lang+Fulton Type PLX Mesh Size 66x33mm with Bearing bars of 25x2mm, Traverse bars of 10x2mm and frame of 40x3mm (Subject to Structural Engineers Review). Structural support details to Structural Engineers Details.
- ⑥ New 1.84m high fence. Posts to be 90x90 treated timber, Panels to be framed tongue and grooved with boards running vertically, Treated Timber Gravelboards between posts. Fencing to be GardenTrellis.co.uk Thermally Treated RHS Premium T+G Panels.
- ⑦ New 1.235m high fence. Posts to be 70x70 treated timber, Panels to be framed tongue and grooved with boards running vertically. Fencing to be GardenTrellis.co.uk Thermally Treated RHS Premium T+G Panels. Top and roadside post face of fence to be fitted with 2 way weathered cappings.
- ⑧ Paving brick finish to top of retaining wall. Brick to be Chelmer Valley Brick Ltd Type TBC
- ⑨ Full width of units 1H & 1J - ACO RainDrain Brickslot B125 drain with silt trap linked to drainage system to Drainage Consultants details.
- ⑩ Galvanised steel angle trim to support sett paving. Extent indicated by blue line. Product to be Kinley.co.uk Ref: Fort Finish: Galvanised Size:150.

revisions: A- : - : -/15 : -

project
PARSIFAL HOUSE
521 FINCHLEY ROAD
LONDON NW3 7BT
drawing title
GENERAL ARRANGEMENT
PLAN
FRONT GARDEN

scale date
1:50@A3 26/01/24

drawn by
JS

job no. drawing no. rev.
AS0823 2.00 A-

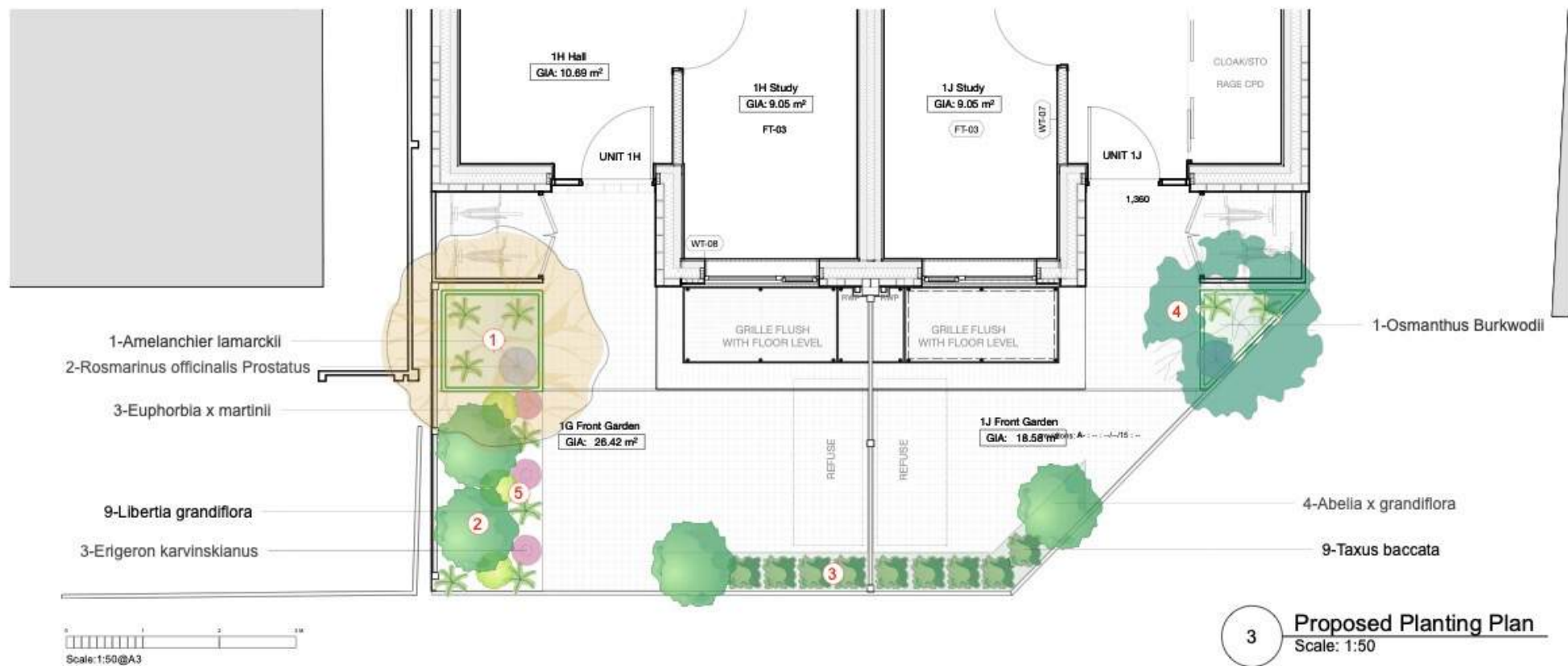
DO NOT SCALE THIS DRAWING -
ALL DIMENSIONS TO BE CHECKED ON SITE.
ONLY STATUS 'C' DRAWINGS TO BE USED
FOR CONSTRUCTION PURPOSES

DRAWING STATUS
A SCHEME - Outline/ Scheme drawings for proposals, budgets, etc.
B DESIGN DEVELOPMENT - Evolving final design drawings for approvals, tenders, billing etc.
C CONSTRUCTION - Fully developed drawings issued under instruction for construction.

Alladio Sims
Garden Landscape Design
Unit C Willow House
Dragonfly Place
Brockley
London
SE4 2FJ
T 020 77323996
M 07958 902 893
E jon@alladiosims.co.uk

2. Soft Landscape





- 1 Amelanchier x Lamarckii multi stem Uk native tree planted in bespoke planter. Clear stems 1500 mm min. Height 2500/3000 mm.
- 2 Abelia x Grandiflora screening. Semi-evergreen shrub. Height 1500 mm min.
- 3 Taxus baccata (Native yew) hedge, evergreen. Height 1500 mm.
- 4 Osmanthus Burkwoodii multi stem evergreen sculptural small tree. Height 2000 mm, clear stems 1300 mm min.
- 5 Mixed low perennials planting including: libertia grandiflora (evergreen), euphorbia martinii (evergreen), erigeron karvinskianus (non evergreen), rosmarinus prostratus (evergreen). 2/3 litre pots.

project PARSIFAL HOUSE 521 FINCHLEY ROAD LONDON NW3 7BT	scale 1:20@A3	date 30/01/24	DRAWING STATUS A. SCHEME - Outline/ Scheme drawings for proposals, budgets, etc. B. DESIGN DEVELOPMENT - Evolving final design drawings for approvals, tenders, billing etc. C. CONSTRUCTION - Fully developed drawings issued under instruction for construction.
	drawn by EA		
drawing title PROPOSED PLANTING PLAN	job no. AS0823	drawing no. rev. 3.00 A-	<div>  <div> Unit C Willow House Dragonfly Place Brookley London SE4 2PJ T: 020 77323996 M: 07909 902 890 E: jon@alladiosims.co.uk </div> </div>
DO NOT SCALE THIS DRAWING. ALL DIMENSIONS TO BE CHECKED ON SITE. ONLY STATUS 'C' DRAWINGS TO BE USED FOR CONSTRUCTION PURPOSES			

3. Soft Landscape Palette





Abelia x grandiflora (Glossy abelia)



Amelanchier lamarckii (Snowy mespilus)



Erigeron karvinskianus (Mexican fleabane)



Euphorbia x martini 'Baby Charm' (Martin's spurge 'Baby Charm')



Libertia grandiflora (New Zealand satin flower)



Osmanthus x burkwoodii (Burkwood osmanthus)



Salvia rosmarinus (Prostratus Group) 'Irene' (Rosemary 'Irene')



Taxus baccata (Common yew)



4. Soft Landscape Plant Seasonal Chart



Plant		Season of interest			
		Spring	Summer	Autumn	Winter
	Abelia x grandiflora (Glossy abelia)	✿ 	 	 	
		🌿 			
	Amelanchier lamarckii (Snowy mespilus)	✿ 			
		🌿 		 	
	Erigeron karvinskianus (Mexican fleabane)	✿ 	 		
		🌿 			
	Euphorbia x martini 'Baby Charm' (Martin's spurge 'Baby Charm')	✿ 			
		🌿 			
	Libertia grandiflora (New Zealand satin flower)	✿ 			
		🌿 			



Plant

Season of interest



Osmanthus x burkwoodii (Burkwood osmanthus)



Salvia rosmarinus (Prostratus Group) 'Irene' (Rosemary 'Irene')



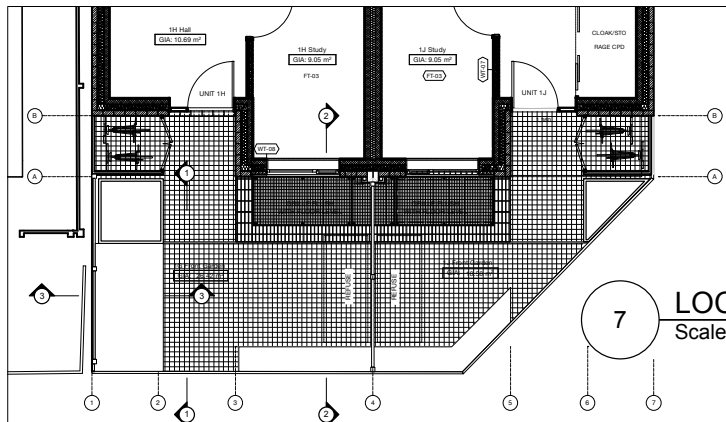
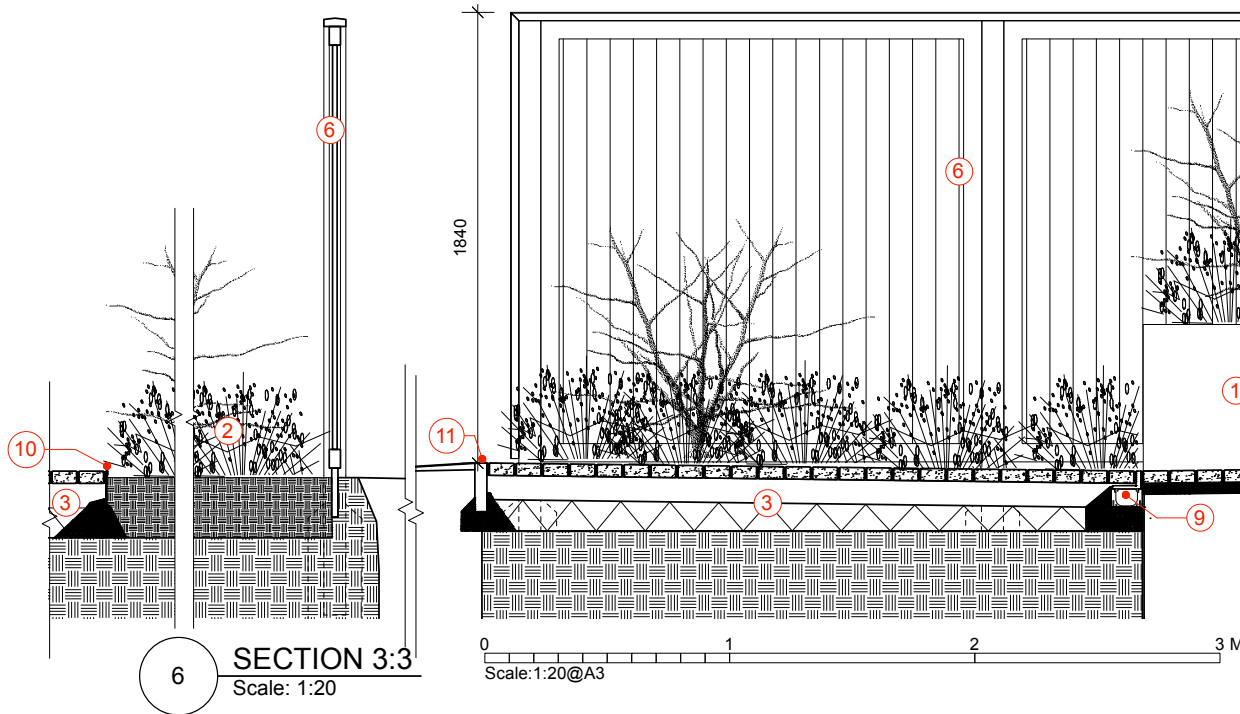
Taxus baccata (Common yew)




5. Hard Landscape Sections 1:1 and 3:3



- ① Bespoke raised galvanised and powder coated steel planter. Supplied by lotagarden.com. Colour :TBC
- ② Planted areas set flush with paved area. Sub-grade forked loose and building rubble removed before topping up with Border mix soil to level 100mm below paving level. Finish with 50mm fine composted bark mulch.
- ③ Paved area over sub-grade - 100x100x40mm Portloe Graphite Limestone setts finished tumbled and brushed. From Lowarthpaving.co.uk or similar approved. Setts bedded on 100mm C7.5 lean mix concrete over 100-130mm compacted DTP1 sub-base (sub-base laid to 1:80 falls)
- ④ Paved area over basement roof construction - 100x100x40mm Portloe Graphite Limestone setts finished tumbled and brushed. From Lowarthpaving.co.uk or similar approved. Setts bedded directly on to waterproof finish of basement structure to architects detail (laid to 1:80 falls)

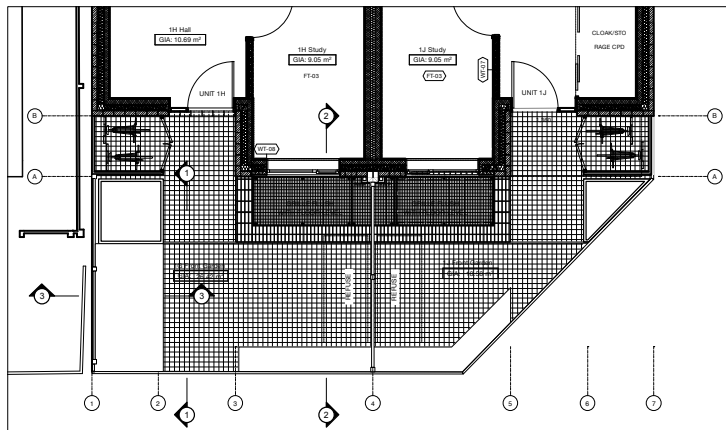
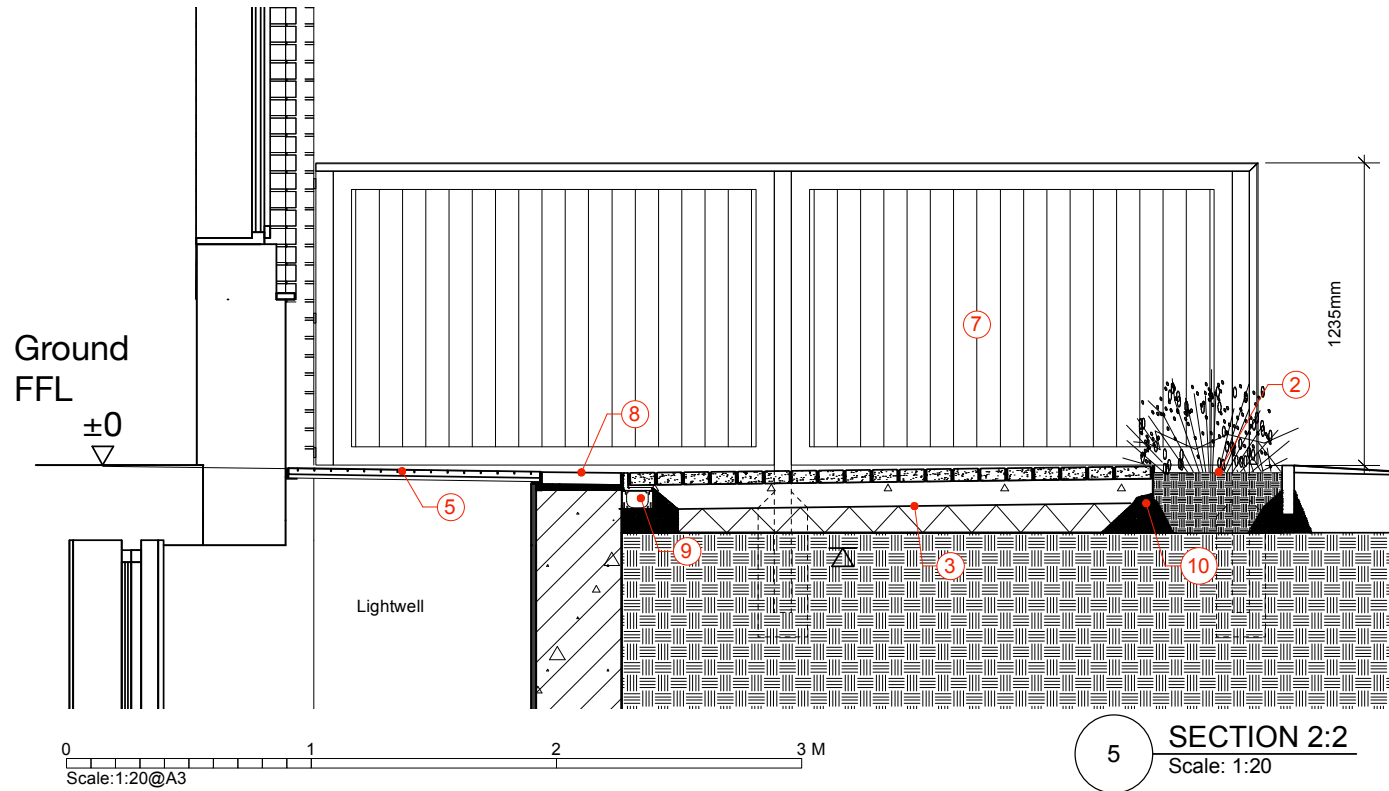


- ⑥ New 1.84m high fence. Posts to be 90x90 treated timber, Panels to be framed tongue and grooved with boards running vertically, Treated Timber Gravelboards between posts. Fencing to be GardenTrellis.co.uk Thermally Treated RHS Premium T+G Panels.
- ⑨ Full width of units 1H & 1J - ACO RainDrain Brickslot B125 drain with silt trap linked to drainage system to Drainage Consultants details.
- ⑩ Galvanised steel angle trim to support sett paving. Extent indicated by blue line. Product to be Kinley.co.uk Ref: Fort Finish: Galvanised Size:150.
- ⑪ Precast 150x50mm concrete kerb set flush with new paving and roadway finish.

revisions: A- : - : -/15 : -	project	scale	date	DRAWING STATUS A SCHEME - Outline/ Scheme drawings for proposals, budgets, etc. B DESIGN DEVELOPMENT - Evolving final design drawings for approvals, tenders, billing etc. C CONSTRUCTION - Fully developed drawings issued under instruction for construction.
	PARSIFAL HOUSE 521 FINCHLEY ROAD LONDON NW3 7BT	1:20@A3	26/01/24	
	drawing title	job no.	drawing no.	rev.
	SECTION 1:1 AND 3:3	AS0823	2.10	A-
	DO NOT SCALE THIS DRAWING - ALL DIMENSIONS TO BE CHECKED ON SITE. ONLY STATUS 'C' DRAWINGS TO BE USED FOR CONSTRUCTION PURPOSES			
	 Unit C Willow House Dragonfly Place Brookley London SE4 2JF T: 020 77323996 M: 07958 902 893 E: jon@alladiosims.co.uk Alladio Sims Garden Landscape Design			


6. Hard Landscape Sections 2:2





9 **LOCATION PLAN**
Scale: 1:100

- ② Planted areas set flush with paved area. Sub-grade forked loose and building rubble removed before topping up with Border mix soil to level 100mm below paving level. Finish with 50mm fine composted bark mulch.
- ③ Paved area over sub-grade - 100x100x40mm Portloe Graphite Limestone setts finished tumbled and brushed. From Lowarthpaving.co.uk or similar approved. Setts bedded on 100mm C7.5 lean mix concrete over 100-130mm compacted DTP1 sub-base (sub-base laid to 1:80 falls)
- ⑤ Galvanised steel grating over lightwell. Lang+Fulton Type PLX Mesh Size 66x33mm with Bearing bars of 25x2mm, Traverse bars of 10x2mm and frame of 40x3mm (Subject to Structural Engineers Review). Structural support details to Structural Engineers Details.
- ⑦ New 1.235m high fence. Posts to be 70x70 treated timber, Panels to be framed tongue and grooved with boards running vertically. Fencing to be GardenTrellis.co.uk Thermally Treated RHS Premium T+G Panels. Top and roadside post face of fence to be fitted with 2 way weathered cappings.
- ⑧ Paving brick finish to top of retaining wall. Brick to be Chelmer Valley Brick Ltd Type TBC
- ⑨ Full width of units 1H & 1J - ACO RainDrain Brickslot B125 drain with silt trap linked to drainage system to Drainage Consultants details.
- ⑩ Galvanised steel angle trim to support sett paving. Extent indicated by blue line. Product to be Kinley.co.uk Ref: Fort Finish: Galvanised Size:150.

	project	scale	date	<div>DRAWING STATUS</div> <div>A SCHEME - Outline/ Scheme drawings for proposals, budgets, etc.</div> <div>B DESIGN DEVELOPMENT - Evolving final design drawings for approvals, tenders, billing etc.</div> <div>C CONSTRUCTION - Fully developed drawings issued under instruction for construction.</div>	
	PARSIFAL HOUSE 521 FINCHLEY ROAD LONDON NW3 7BT	1:20@A3	26/01/24		
	drawing title	job no.	drawing no.		rev.
	SECTION 2:2	AS0823	2.11		A-
DO NOT SCALE THIS DRAWING - ALL DIMENSIONS TO BE CHECKED ON SITE.				<div></div> <div>Unit C Willow House Dragonfly Place Brookley London SE4 2JF</div> <div>T 020 77323996 M 07958 902 893 E jon@alladiosims.co.uk</div>	
ONLY STATUS 'C' DRAWINGS TO BE USED FOR CONSTRUCTION PURPOSES					

7. Hard Landscape Materials



7. Hard Landscape Materials





Lang+Fulton Type PLX Mesh Size 66x33mm



**Kinley.co.uk Ref: Fort Finish: Galvanised
Size:150.**



**Bespoke raised galvanised and powder coated
steel planter**



**GardenTrellis.co.uk Thermally
Treated RHS Premium T+G Panels**



Chelmer Valley Paving Brick – Type Chelsea



**Portloe Graphite Limestone
setts finished tumbled and brushed**



ACO RainDrain Brickslot B125



www.alladimosims.co.uk



