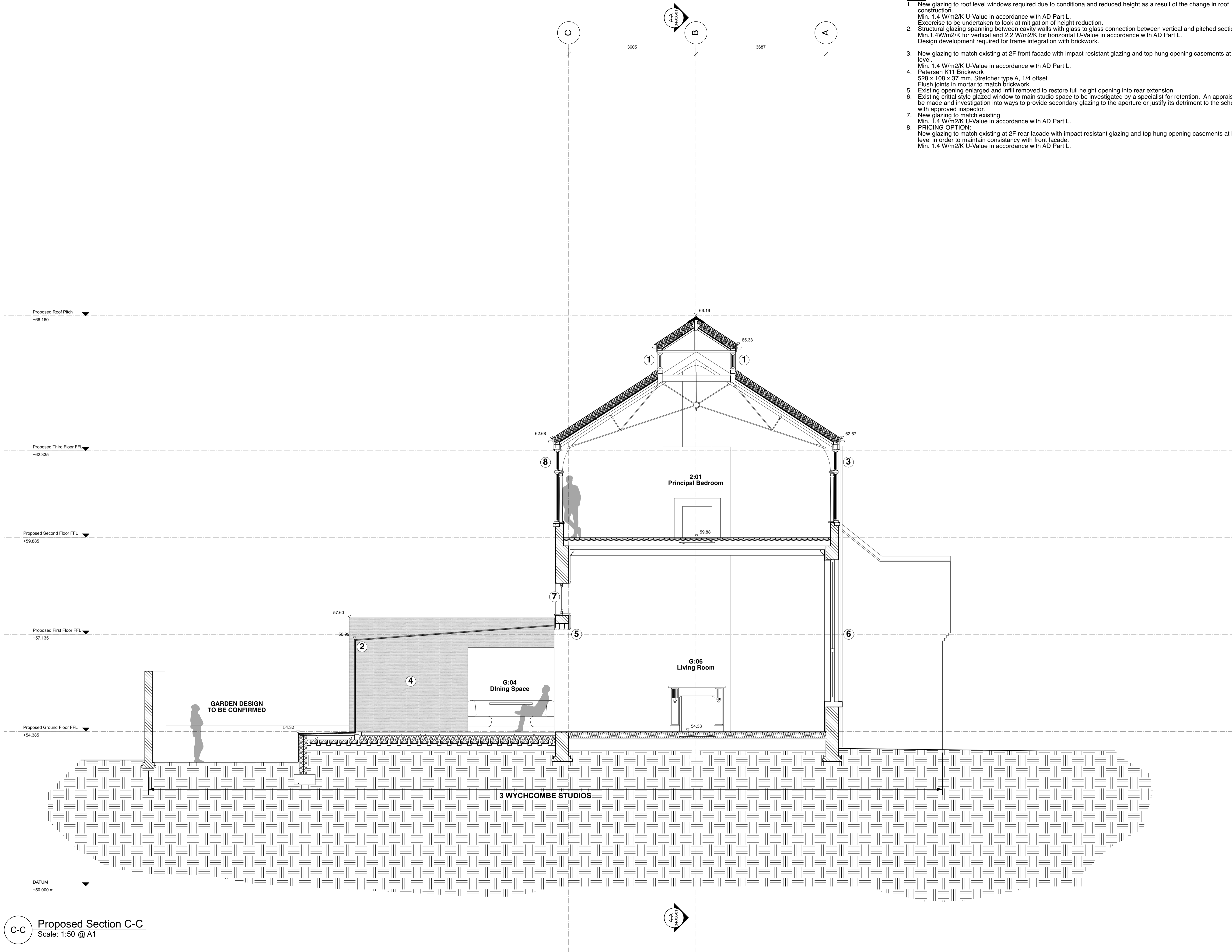
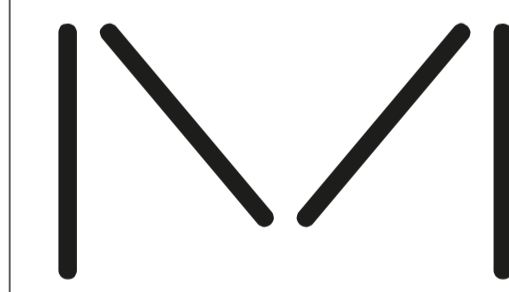


Notes

1. New glazing to roof level windows required due to conditiona and reduced height as a result of the change in roof construction.
Min. 1.4 W/m2/K U-Value in accordance with AD Part L.
Excercise to be undertaken to look at mitigation of height reduction.
2. Structural glazing spanning between cavity walls with glass to glass connection between vertical and pitched sections.
Min.1.4W/m2/K for vertical and 2.2 W/m2/K for horizontal U-Value in accordance with AD Part L.
Design development required for frame integration with brickwork.
3. New glazing to match existing at 2F front facade with impact resistant glazing and top hung opening casements at high level.
Min. 1.4 W/m2/K U-Value in accordance with AD Part L.
4. Petersen K11 Brickwork
528 x 108 x 37 mm, Stretcher type A, 1/4 offset
Flush joints in mortar to match brickwork.
5. Existing opening enlarged and infill removed to restore full height opening into rear extension
6. Existing crittal style glazed window to main studio space to be investigated by a specialist for retention. An appraisal is to be made and investigation into ways to provide secondary glazing to the aperture or justify its detriment to the scheme with approved inspector.
7. New glazing to match existing
Min. 1.4 W/m2/K U-Value in accordance with AD Part L.
8. **PRICING OPTION:**
New glazing to match existing at 2F rear facade with impact resistant glazing and top hung opening casements at high level in order to maintain consistency with front facade.
Min. 1.4 W/m2/K U-Value in accordance with AD Part L.



C-C Proposed Section C-C
Scale: 1:50 @ A1



**STUDIO
MACKERETH**
Studio Mackereth
FR1.06, 1 Phipp Street
London
EC2A 4PS

Project Title
WYCHCOMBE STUDIOS
3 WYCHCOMBE STUDIOS, LONDON,
NW3 4XY

Sheet Title
PL Proposed Section C-C

Sheet Scale
1:50 @ A1

Total Sheets
17

File Name
076-XX-24_34_Proposed Sections Elevations.vaa

Sheet No.
076-XX-34-XX-PL03

Suitability
A2 APPROVED FOR PLANNING STAGE

Drawn By
TTR

Reviewed By
MW