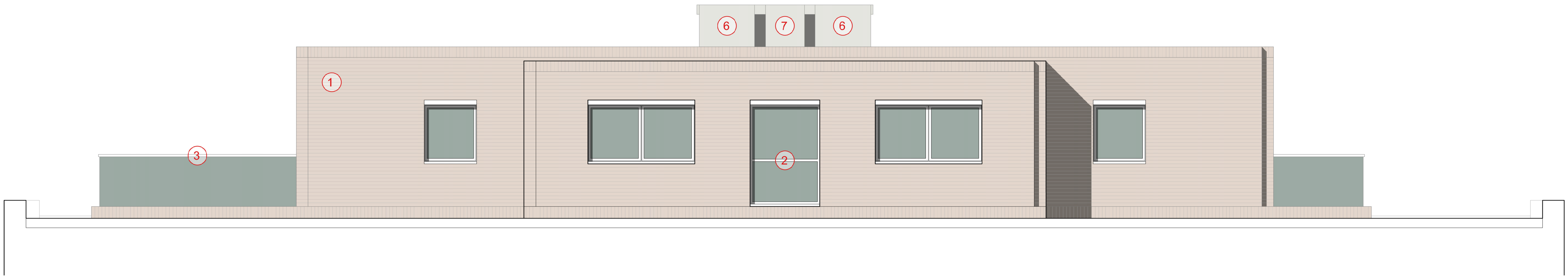




Type B - Front Elevation



Type B - Rear Elevation



**TONY FRETTON ARCHITECTS**  
Tony Fretton Architects Ltd  
21 Berners Street, London W1T 3LP  
T+44 (0)20 7284 2000, F+44 (0)70 1197 5379  
mail@tonyfretton.com, www.tonyfretton.com

Drawing No :  
306\_PL\_342

Rev  
A

Job No:	306
Project:	Darwin Court
Drawing title:	Type B Front & Rear Elevations
	As Proposed
Scale:	1:50 @ A1 & 1:100 @ A3
Origination Date:	November, 2023
Status:	Planning

- | Rev | Date | Comments   |
|-----|------|--|
| 1.  |      | New Complimentary Brickwork – Refer to DAS for Details |
| 2.  |      | Metal Framed Glazing in White                          |
| 3.  |      | Metal Framed Railing System in White                   |
| 4.  |      | White Metal Fascia                                     |
| 5.  |      | Water Storage  |
| 6.  |      | Heat Pump  |
| 7.  |      | Extract  |
| 8.  |      | PV Panels  |

**NOTES**

All dimensions are from structure to structure unless indicated otherwise.

Elements of structure and services are indicated for coordination purposes only. For full structural and services layouts refer to Structural and Services Engineers' drawings.

All dimensions to be checked on site prior to construction or fabrication of any elements.

Any discrepancies between figured dimensions to be reported to the architect for clarification prior to commencing work.

For legend see signature sheet 112\_C02B\_001.

© Copyright Reserved