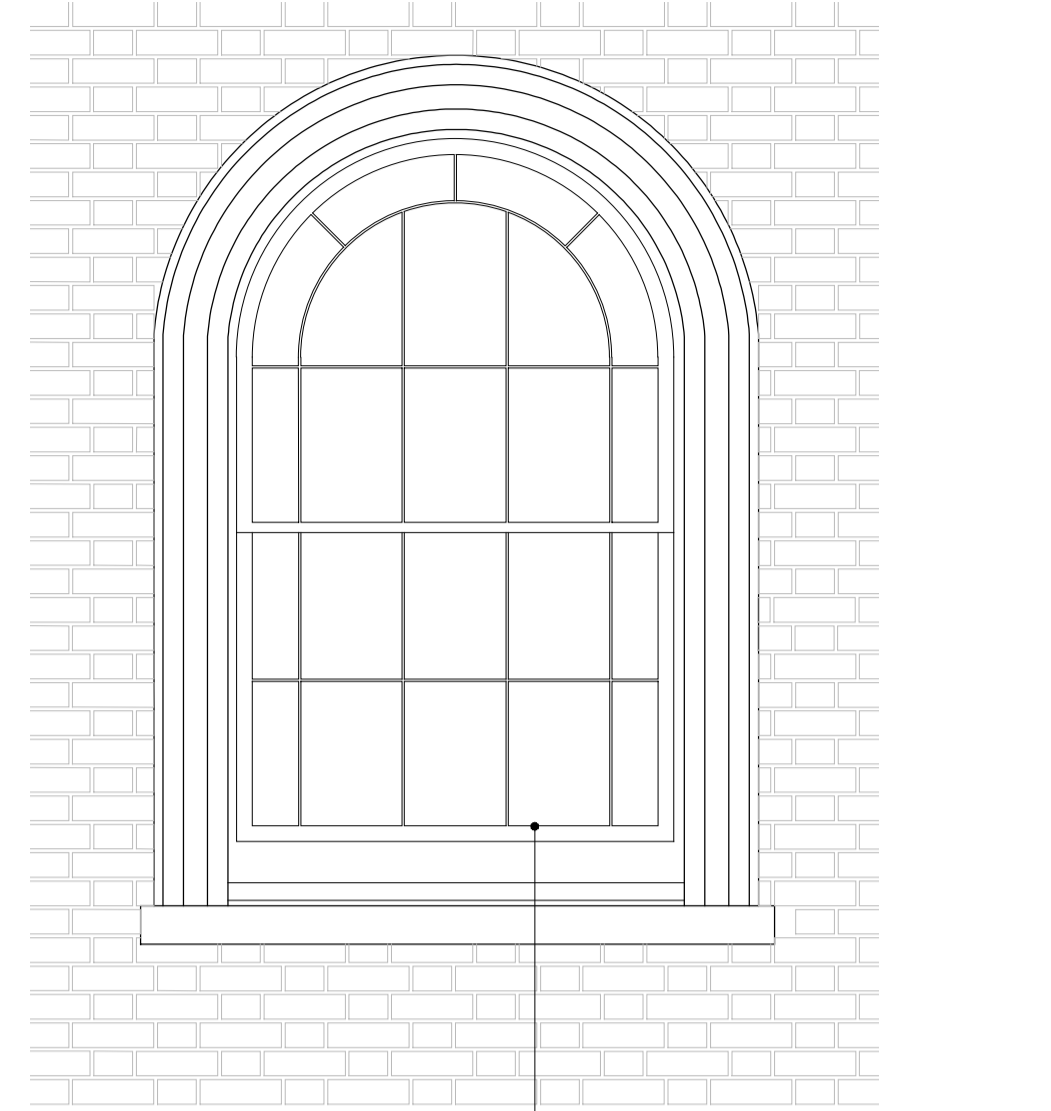
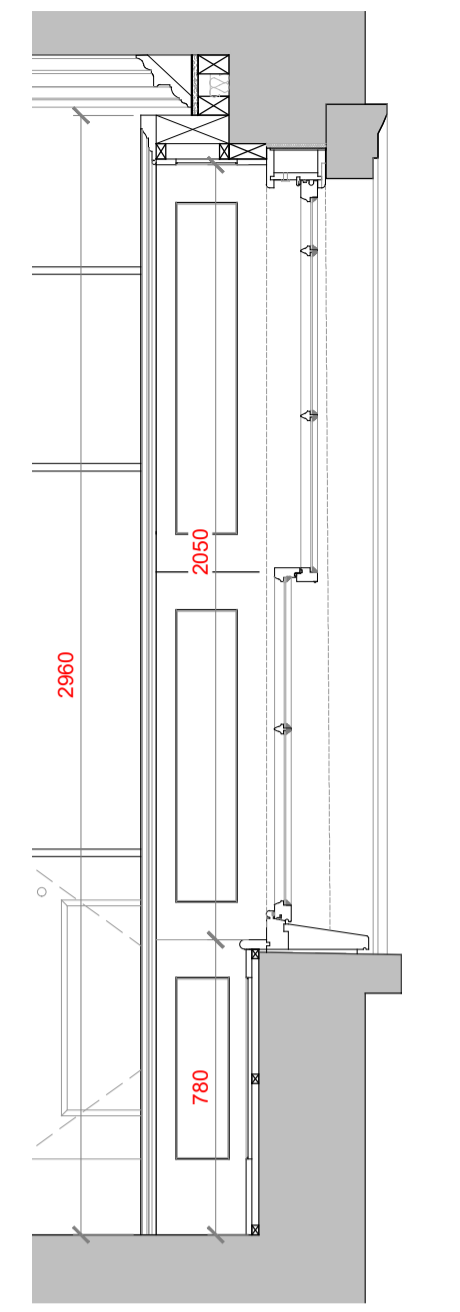


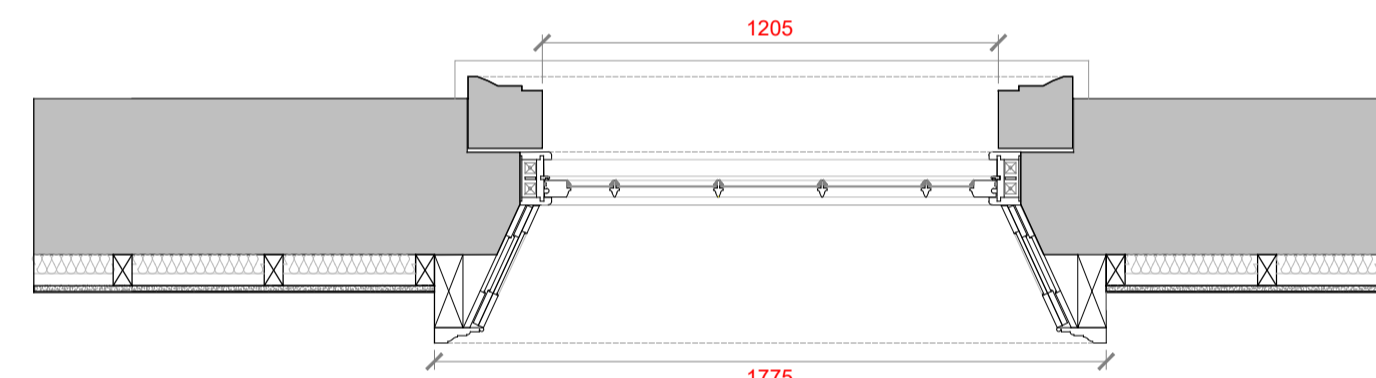
INTERNAL ELEVATION
GROUND FLOOR - FRONT ROOM
1:20@A1
0 100 500 1000mm



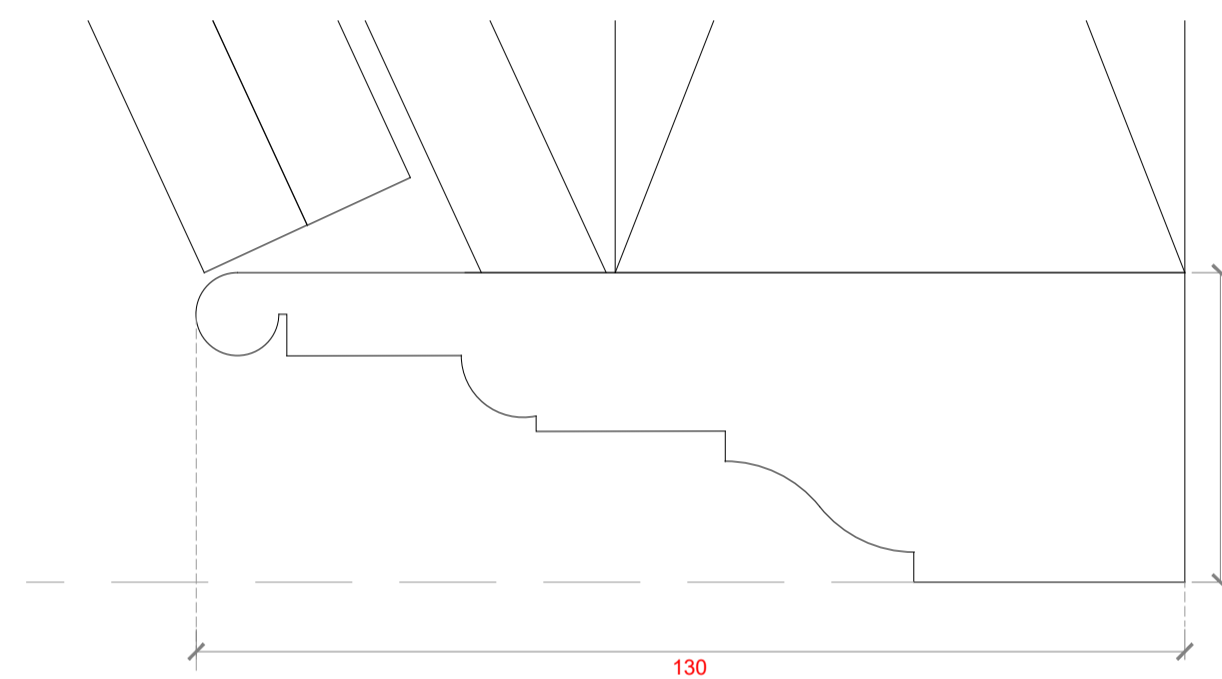
EXTERNAL ELEVATION
GROUND FLOOR - FRONT ROOM
1:20@A1
0 100 500 1000mm



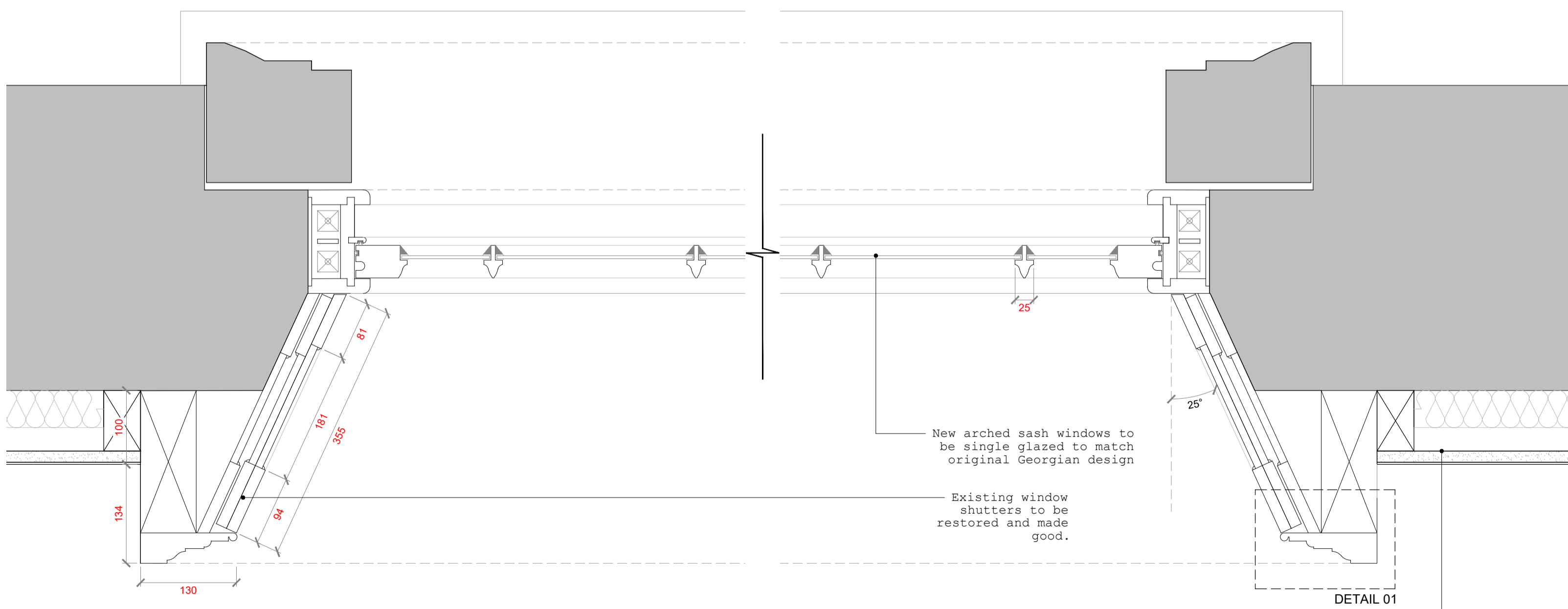
SECTION A
GROUND FLOOR - FRONT ROOM
1:20@A1
0 100 500 1000mm



PLAN
GROUND FLOOR - FRONT ROOM
1:20@A1
0 100 500 1000mm

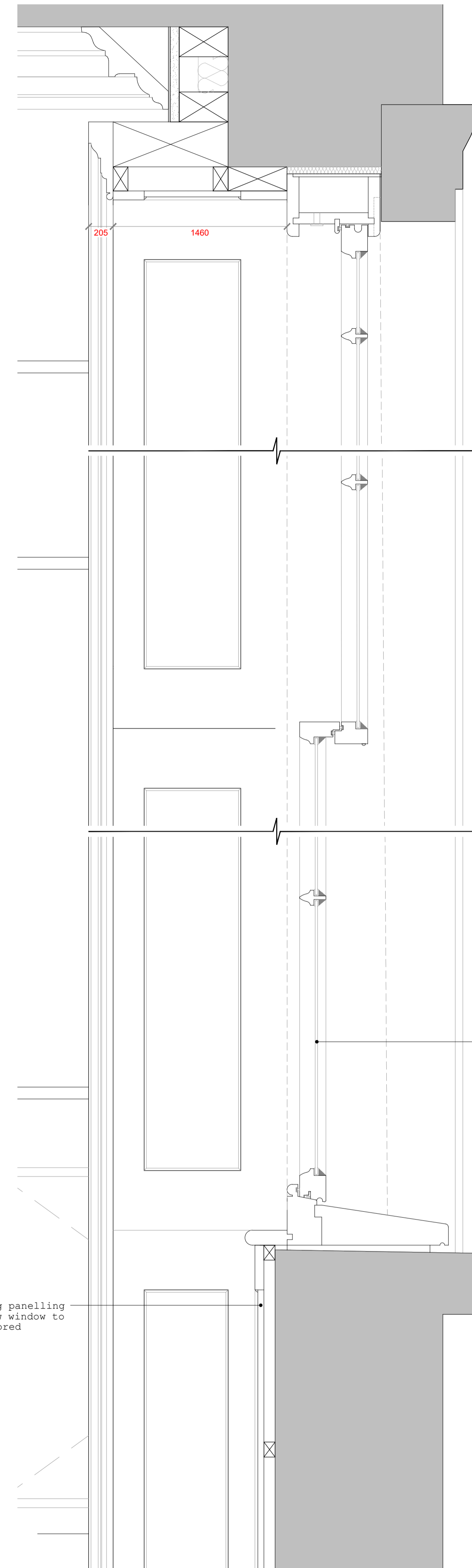


DETAIL 01 - ARCHITRAVE
GROUND FLOOR - FRONT ROOM
1:1@A1

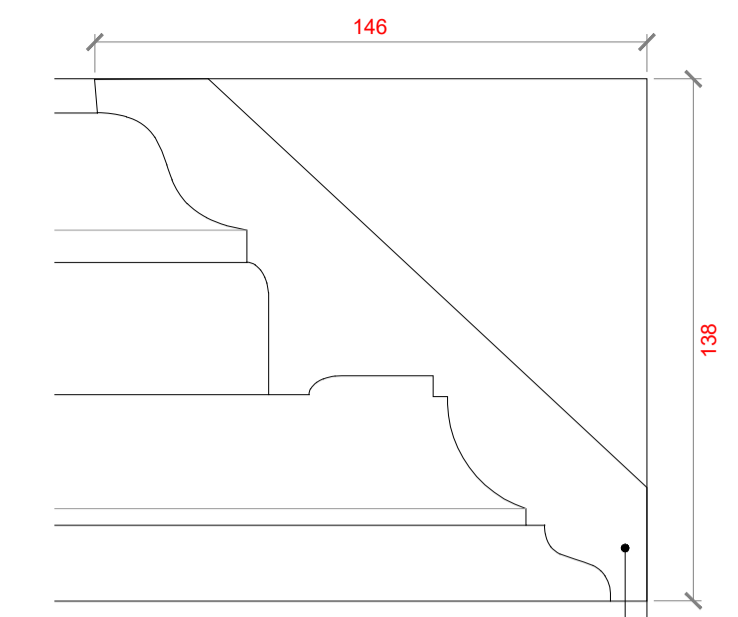


DETAIL PLAN
GROUND FLOOR - FRONT ROOM
1:5@A1

NOTE:
All measurements are subject to those taken on site.
DETAILS ARE SHOWN INDICATIVELY FOR INFORMATION PURPOSES

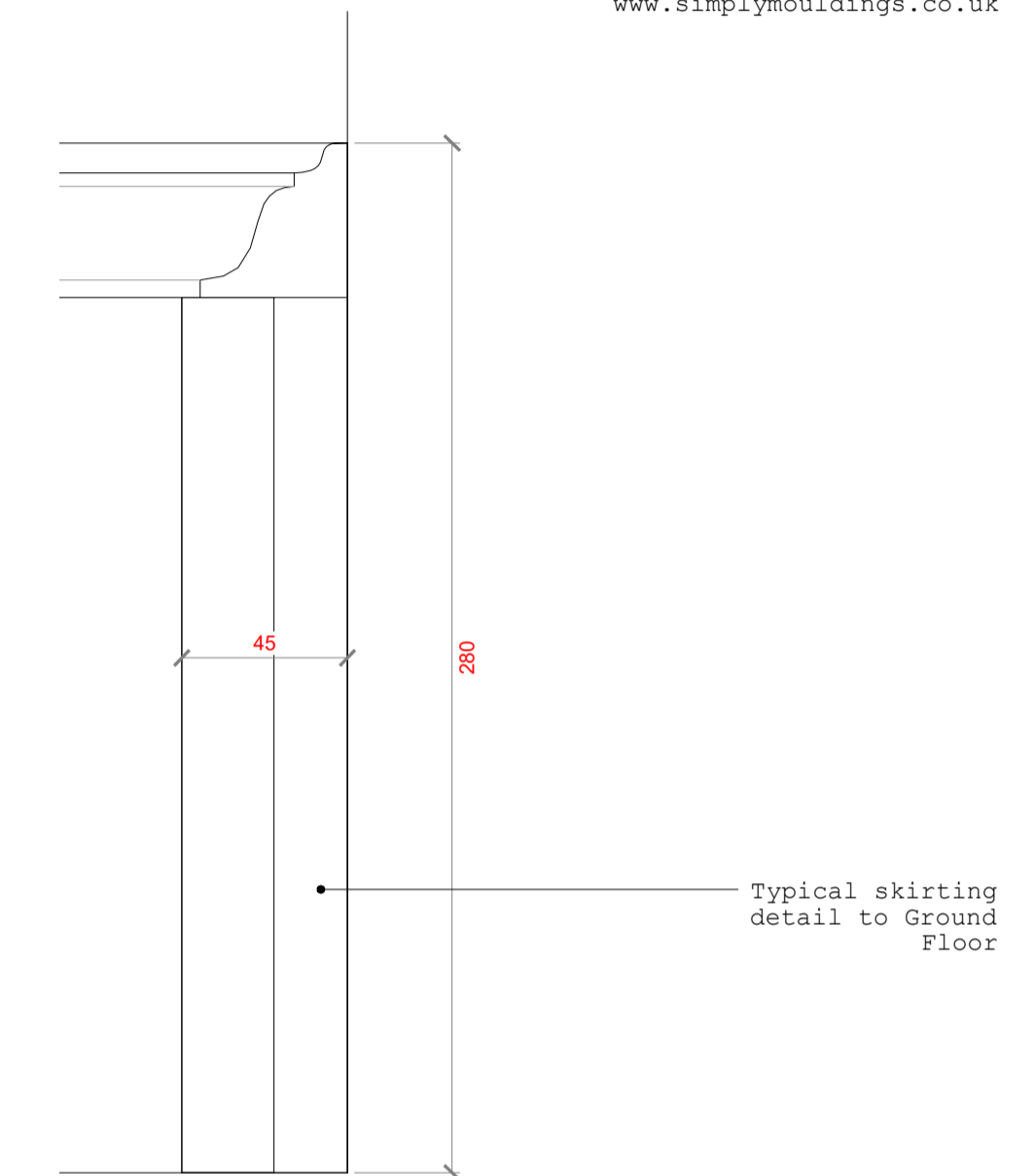


DETAIL SECTION
GROUND FLOOR - FRONT ROOM
1:5@A1
0 5 100 200 300mm



DETAIL 02 - CORNICE
GROUND FLOOR - FRONT ROOM
1:2@A1
0 10 50 100mm

Typical cornice detail to Ground Floor - Large Georgian cornice Ref:SM16 by www.simplymouldings.co.uk



DETAIL 03 - TYPICAL SKIRTING
GROUND FLOOR - FRONT ROOM
1:2@A1
0 10 50 100mm

Typical skirting detail to Ground Floor



KEY
NTS

Hollaway

London | 12a Acton Street | London | WC1X 9SD
T: +44 (0) 20 7094 5429 | E: london@hollawaystudio.co.uk | W: www.hollawaystudio.co.uk
Kent | The Tramway Stables | Ramport Road | Hythe | Kent | CT21 5BQ
T: +44 (0) 1303 260 515 | E: kent@hollawaystudio.co.uk | W: www.hollawaystudio.co.uk

Project | 64-66 ARGYLE ST
64-66 ARGYLE ST, KINGS CROSS, LONDON
Client | ST PANCRAS HOTELS GROUP
Title | GROUND FLOOR WINDOWS
Status | PLANNING

Scale: A1 | - Date | MAY 24 Drawn | AA Chk'd | TG

Project Number | Drawing Number | Revision
22.0126 | 500.10 | ----
Bim Number 22.0126-HCL-XXX-DR-A-500.10-50