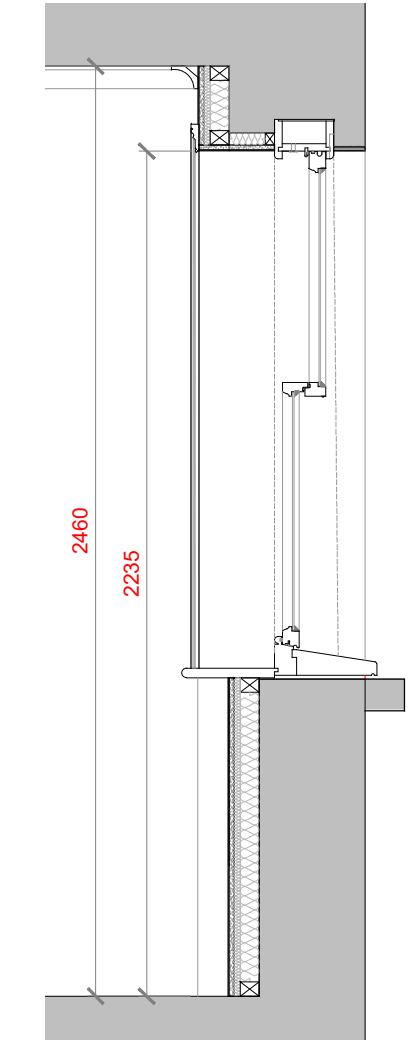
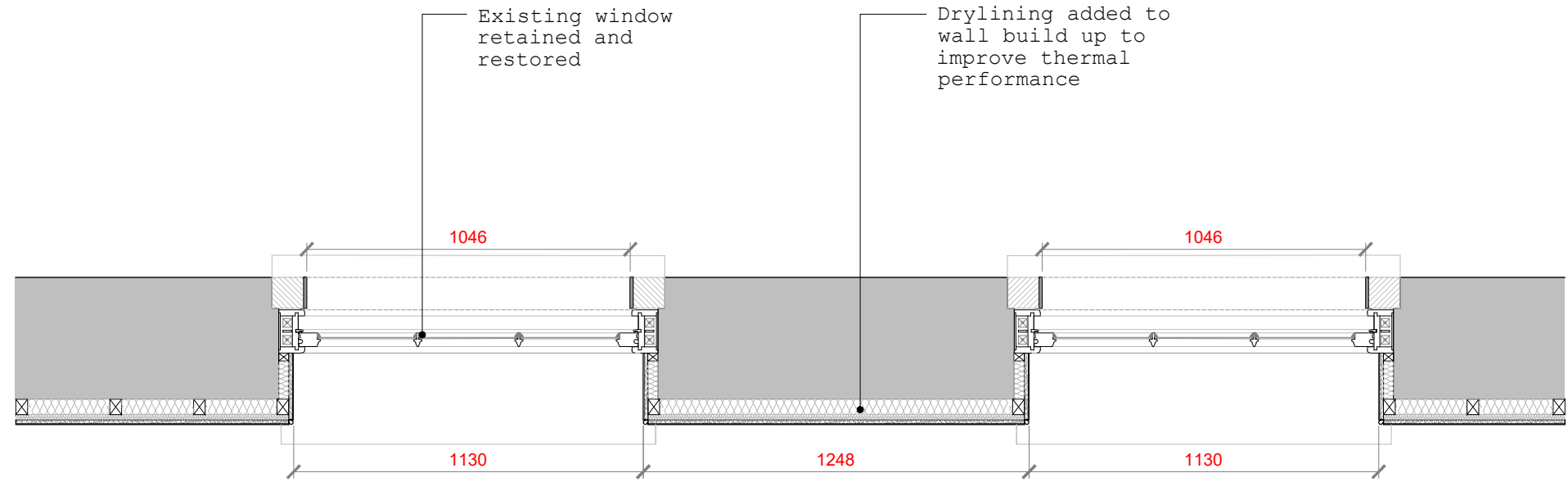


INTERNAL ELEVATION  
THIRD FLOOR - FRONT ROOM  
1:20@A1

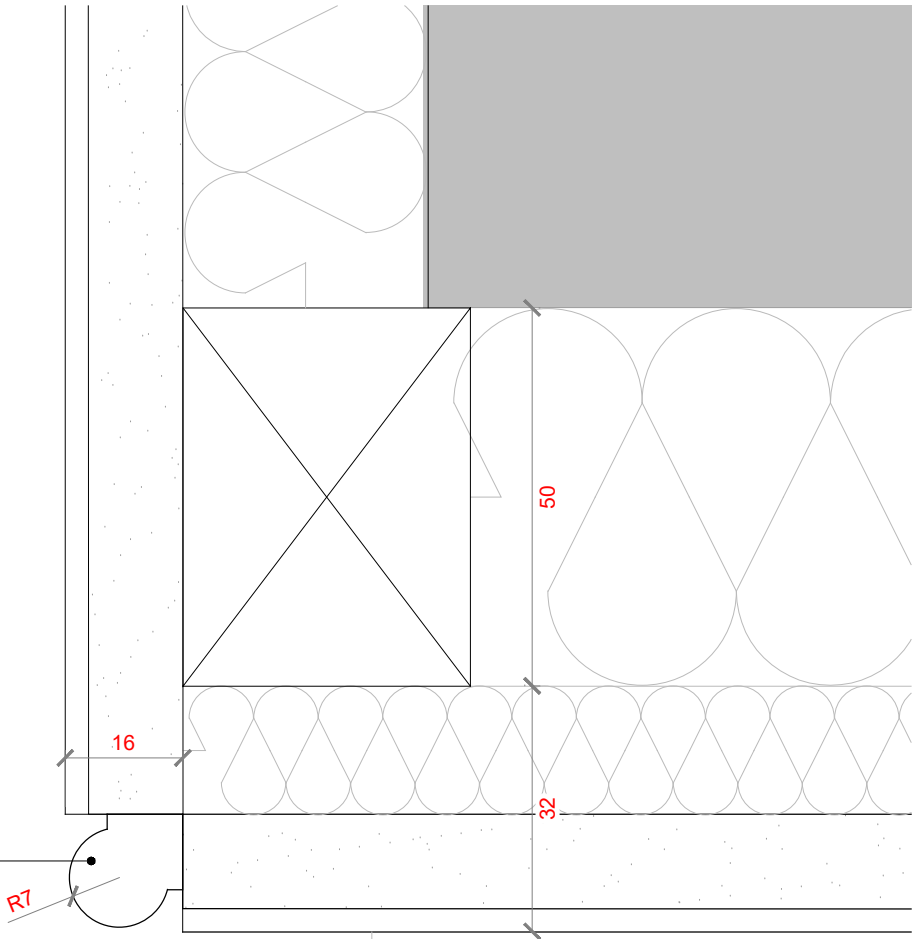


SECTION A  
THIRD FLOOR - FRONT ROOM  
1:20@A1



PLAN  
THIRD FLOOR - FRONT ROOM  
1:20@A1

Timber bead roll to  
architraves on third  
floor - Detail  
becoming simpler as  
moving up the  
building



DETAIL 01 - ARCHITRAVE  
THIRD FLOOR  
1:1@A1

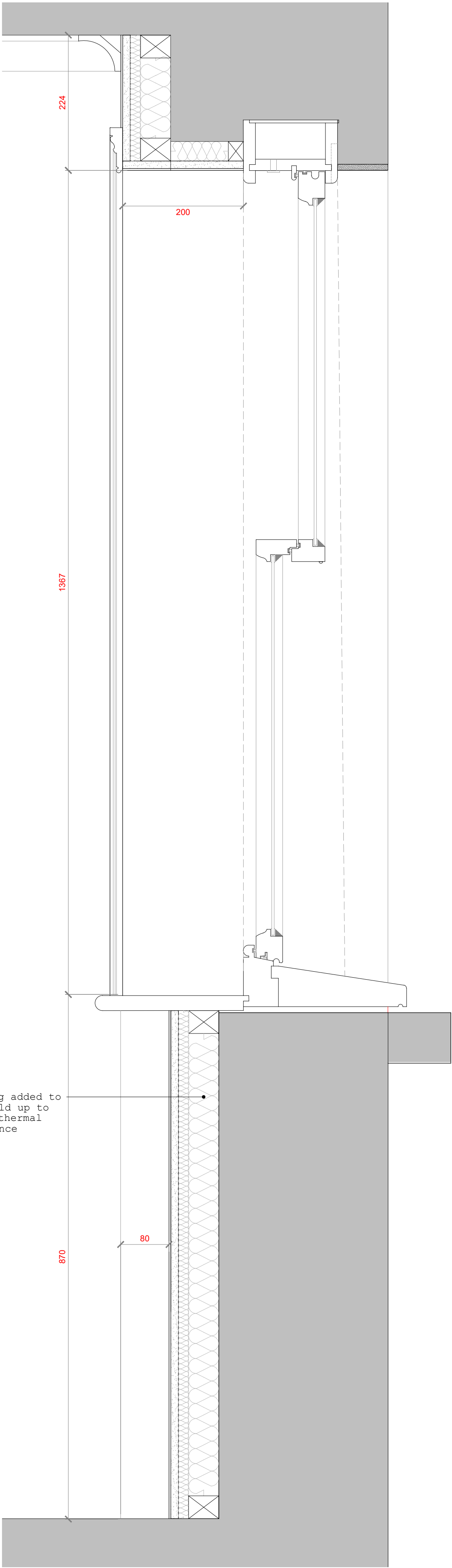


DETAIL PLAN  
THIRD FLOOR - FRONT ROOM  
1:5@A1

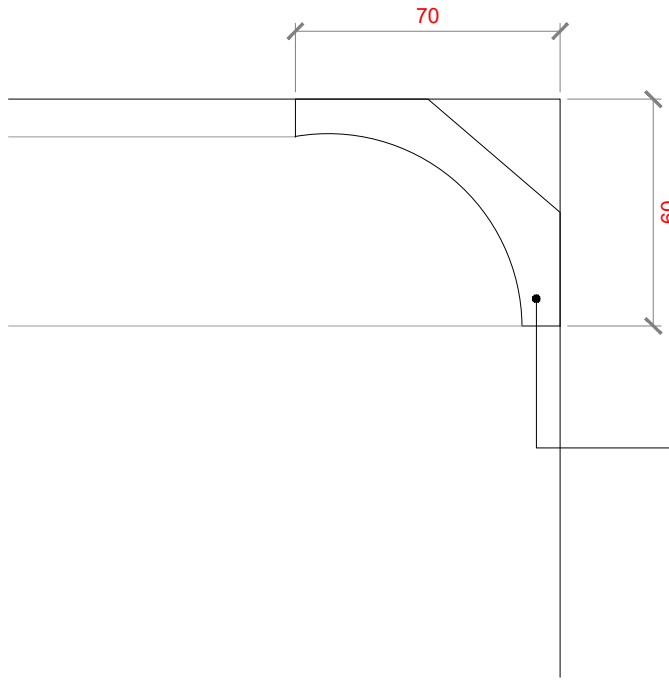
**NOTE:**

All measurements are subject to  
those taken on site.

DETAILS ARE SHOWN INDICATIVELY  
FOR INFORMATION PURPOSES

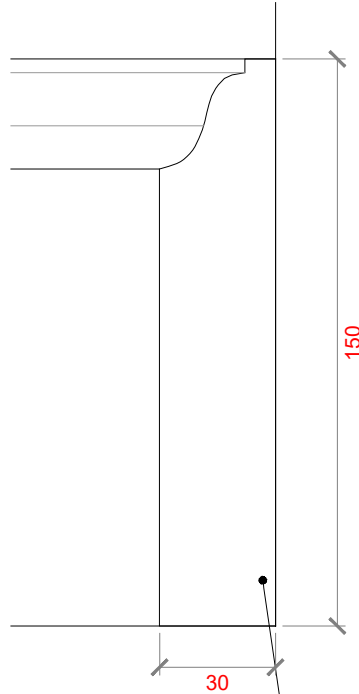


DETAIL SECTION  
THIRD FLOOR - FRONT ROOM  
1:5@A1



Typical cornice  
detail to Third  
Floor

DETAIL 02 - CORNICE  
THIRD FLOOR  
1:2@A1



Painted tulipwood  
skirting to first  
floor rooms with  
moulding. Colour  
tbc.

DETAIL 03 - TYPICAL SKIRTING  
THIRD FLOOR  
1:2@A1

# Hollaway

London | 12a Acton Street | London | WC1X 9NS  
T +44 (0) 20 7096 5425 | E london@hollawaystudio.co.uk | W www.hollawaystudio.co.uk  
Kent | The Tramway Stables | Ramport Road | Rythe | Kent | CT21 5BG  
T +44 (0) 1303 260 515 | E kent@hollawaystudio.co.uk | W www.hollawaystudio.co.uk

Project | 64-66 ARGYLE ST  
64-66 ARGYLE ST, KINGS CROSS, LONDON  
Client | ST PANCRAS HOTELS GROUP  
Title | THIRD FLOOR WINDOWS  
Status | PLANNING

Scale | A1 | - Date | MAY 24 Drawn | AA Chk'd | TG

Project Number Drawing Number Revision  
22.0126 500.13  
Bim Number 22.0126-HOL-XX-XX-DR-A-500.13-S0----

0 1 2 3 4 5M