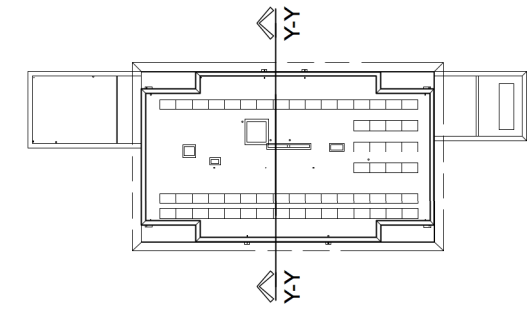
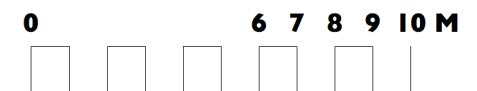
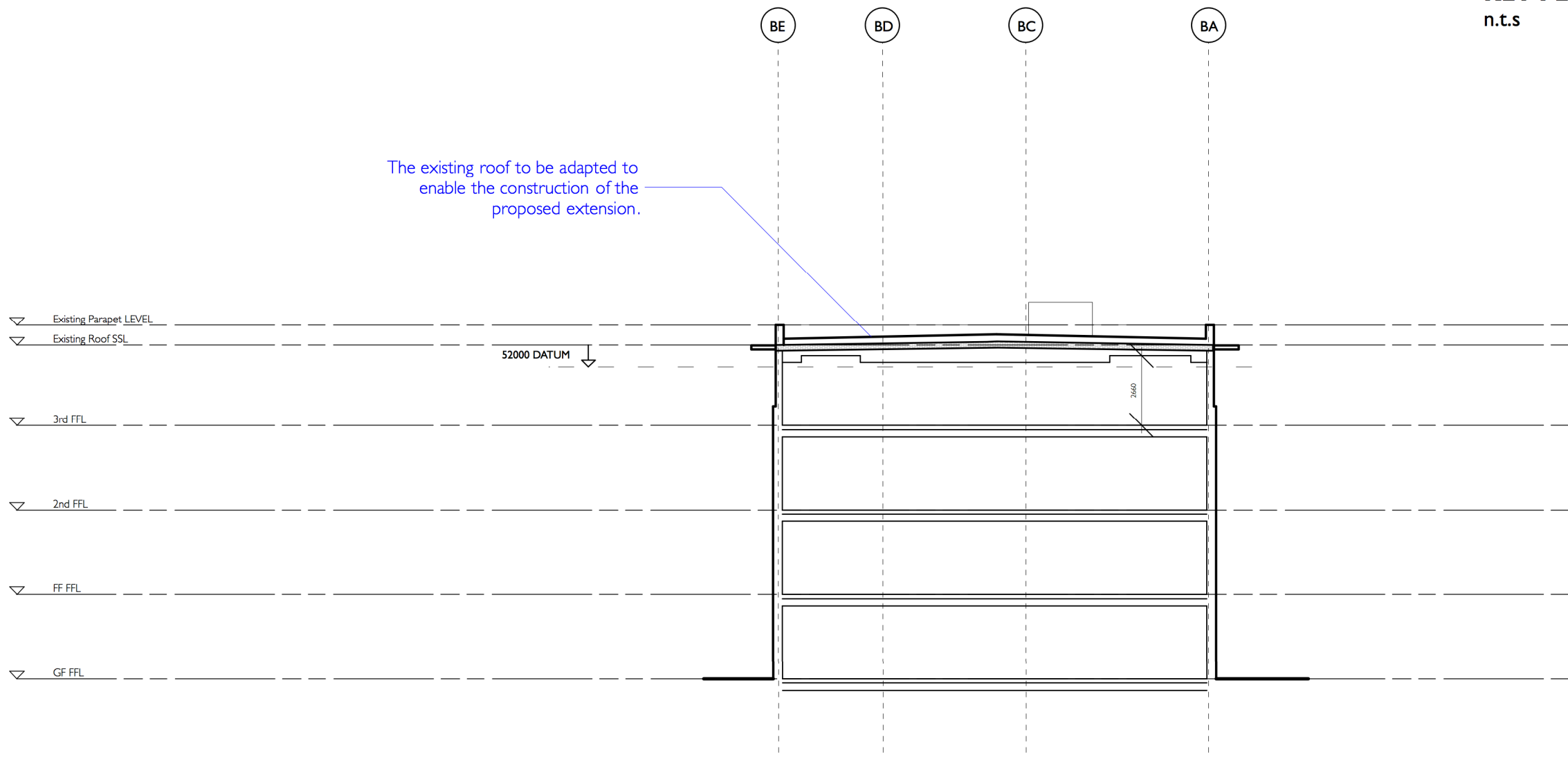


**EXISTING SECTION Y-Y**  
**Block B**



**KEY PLAN**  
n.t.s



Unit 25, BASEPOINT  
EVESHAM  
WORCESTERSHIRE  
WR11 1GP  
t: 020 7328 2576  
Email: info@hubarchitects.co.uk

All dimensions are to be checked on site before commencement of works.  
All sizes and dimensions to any structural elements are indicative only. See structural engineer's drawings for actual sizes/dimensions.  
Sizes of and dimensions to any service elements are indicative only. See service engineer's drawings for actual sizes/dimensions.  
This drawing to be read in conjunction with all relevant Architect's drawings, specifications and other consultants' information.

Rev.	Date.	Description.	Initial.

**EXISTING**

Project: Regent's Gate / Guinness Court NW8	Drawing: EXISTING SECTION Y-Y
Scale: 1:200 @A3	DWG: 1323 - EX - 270
Date: AUG 2022	Revision: /