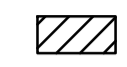
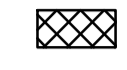
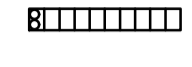


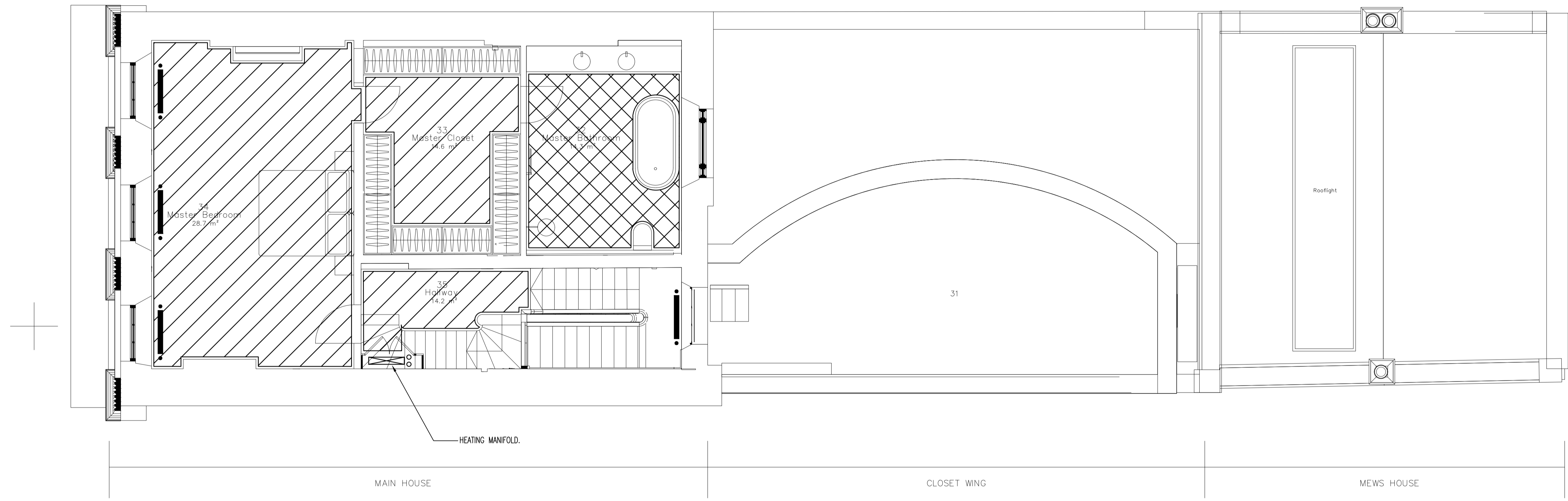


- LEGEND
-  WET UNDERFLOOR HEATING
 -  ELECTRIC UNDERFLOOR HEATING
 -  TRENCH HEATER
 -  RADIATOR
 -  UNDERFLOOR HEATING MANIFOLD



Revisions		Revisions		Revisions	
Rev.	Date	Description	CDM Chk'd	Chk'd	Description
P1	AUG.24	PRELIMINARY ISSUE FOR COMMENT.	J.B	P.B	

Revisions		Revisions		Revisions	
Rev.	Date	Description	CDM Chk'd	Chk'd	Description

Project Consultants	
Architect	Quantity Surveyor
Structural Engineer	Project Manager

CAD Ref. 3271	Originator SLENDER WINTER PARTNERSHIP LIMITED
Checked L.S Date JUL.24	Client
Drawn N.R Date JUL.24	Project 8 GLOUCESTER GATE
Scale 1:50@A1	Drawing Title SECOND FLOOR HEATING SERVICES LAYOUT
Revision P1	Drawing Number 3271-M503

THIS DRAWING IS THE COPYRIGHT OF SLENDER WINTER PARTNERSHIP LIMITED AND IS NOT TO BE REPRODUCED OR TRANSMITTED IN ANY FORM OR BY ANY MEANS, ELECTRONIC OR MECHANICAL, WITHOUT PERMISSION IN WRITING FROM SLENDER WINTER PARTNERSHIP LIMITED. THE COPYRIGHT DESIGN & PATENTS ACT 1988. DO NOT SCALE. ALL DIMENSIONS TO BE CHECKED ON SITE.

swp ltd
consulting engineers
 Head Office: 2 Kings Hill Avenue, Kings Hill,
 West Malling, Kent, ME19 4AQ
 T: 01959 564777 E: swp@swpltd.co.uk

ISO 14001
REGISTERED FIRM

ace
structural engineering business environment

UKAS
MANAGEMENT SYSTEMS

SWP Limited, Registered Office: 2 Kings Hill Avenue, West Malling, Kent, ME19 4AQ. Registered in England No 3735841