

# 7.0 ALTERATIONS TO CLOSET WING KITCHEN/DINING

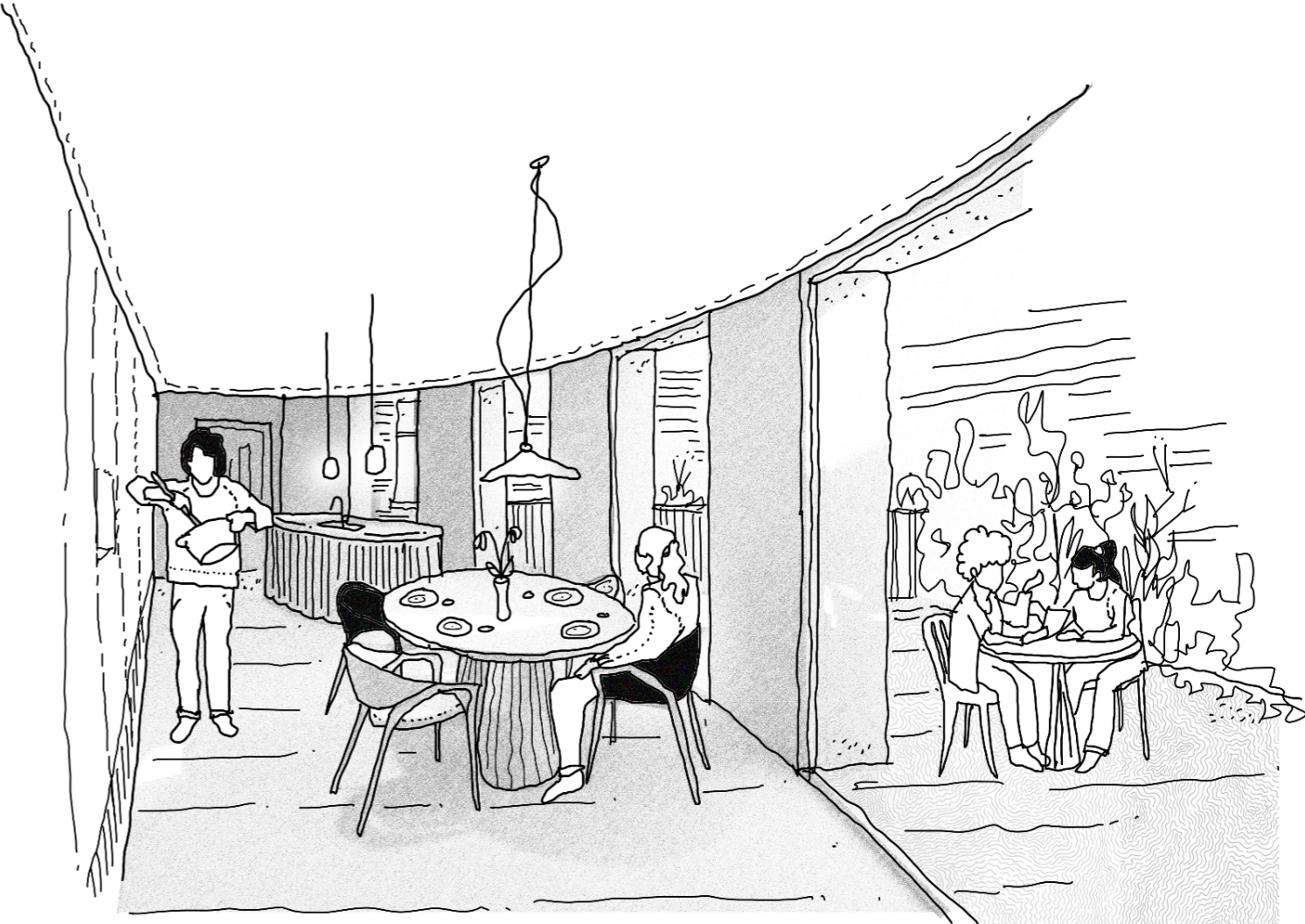


## KITCHEN / DINING APPROACH

The bow shape has the benefit of allowing sunlight to flood into the spacious interior of the new kitchen/dining room and study.

It will also reveal the facade of the mews house, improving the ability to appreciate its architectural value.

The proposed internal finishes intend to be light, neutral tones with rich/warm toned kitchen joinery.



- 1 Natural materials kitchen and dining design
- 2 Minimal design approach, maximising light
- 3 Internal Kitchen / Dining Sketch

# 7.0 ALTERATIONS TO CLOSET WING STUDY

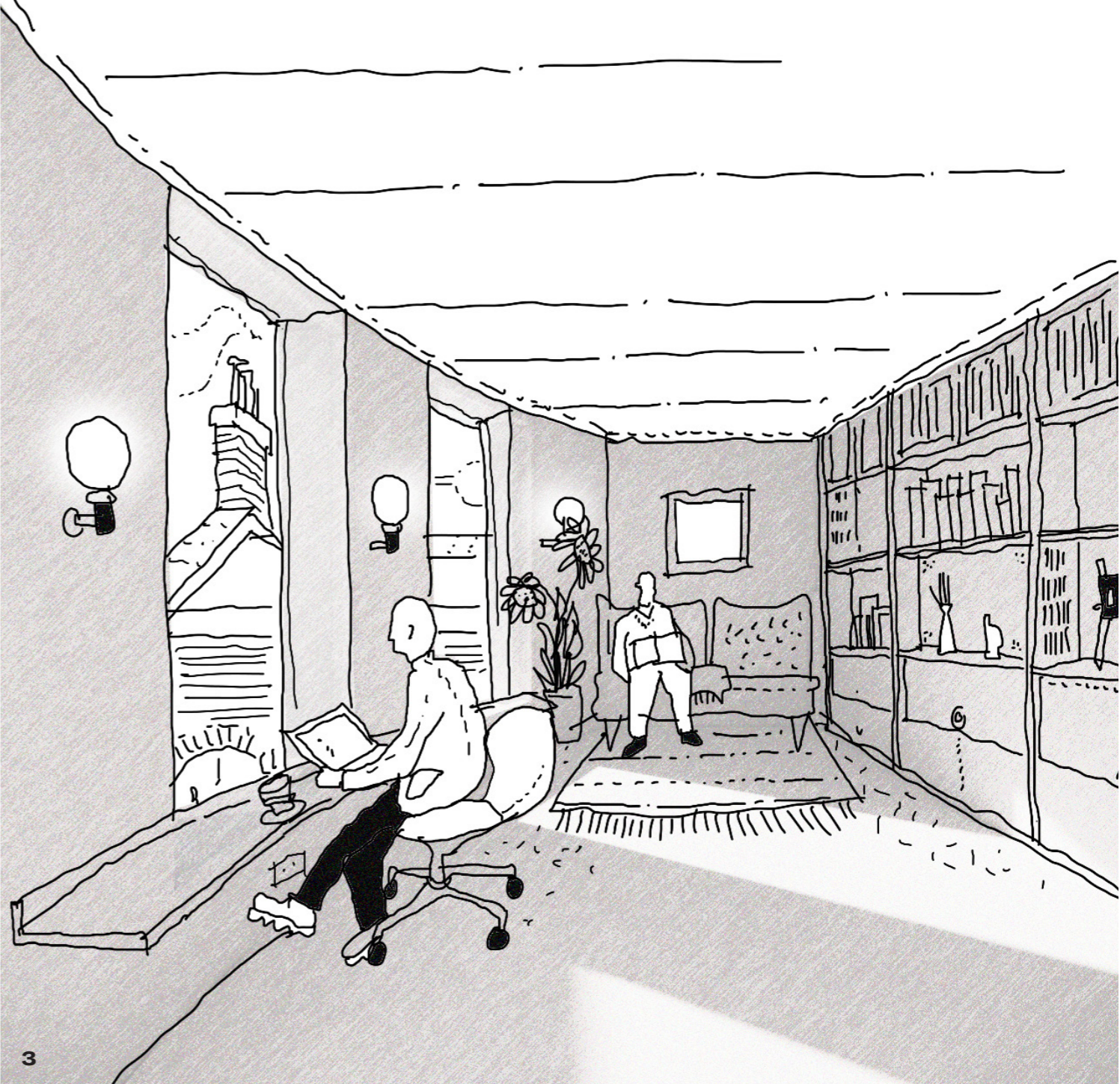


### STUDY APPROACH

The study is a dedicated office and library space.

The space is intended to provide an cosy space to step away and immerse yourself in a warm, rich toned environment with great outlook out whilst being able to appreciate the architectural value of the mews and main house.

The internal finishes are intended to compliment the use of the space with rich, warm and dark neutral tones.



1 Marylebone Terrace - Albion Nord - Marylebone, London  
2 Study - Studio McGee  
3 Internal Study Sketch

# 7.0 ALTERATIONS TO CLOSET WING

## LANDSCAPE APPROACH

### EXTERNAL AREAS ENHANCEMENT

The pre app response noted that there is no objection to greening of the courtyard, and it would be unlikely to require listed building consent.

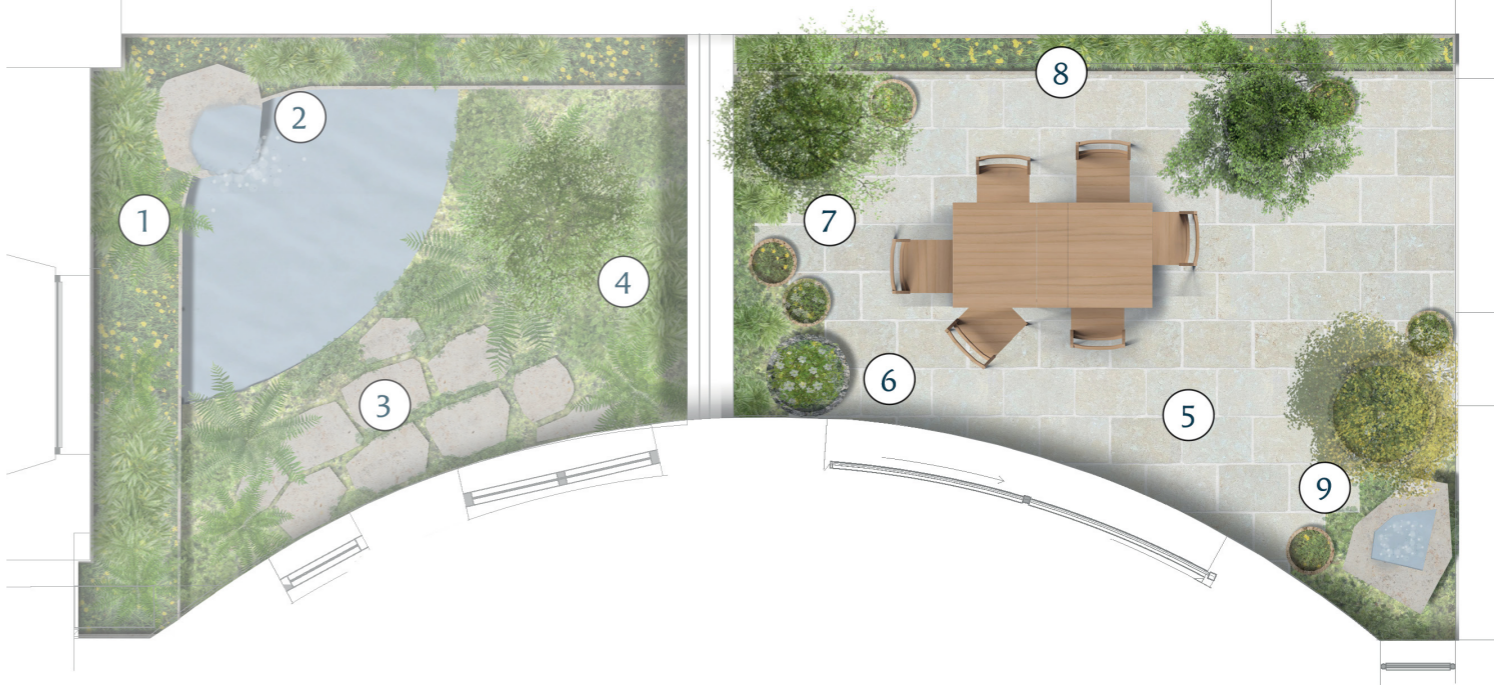
An overview of the proposals are still provided here for context and to show the commitment to creating a high quality space and design that enhances the setting of the listed building.

DFA have been working alongside Heard Landscapes to develop the proposals.

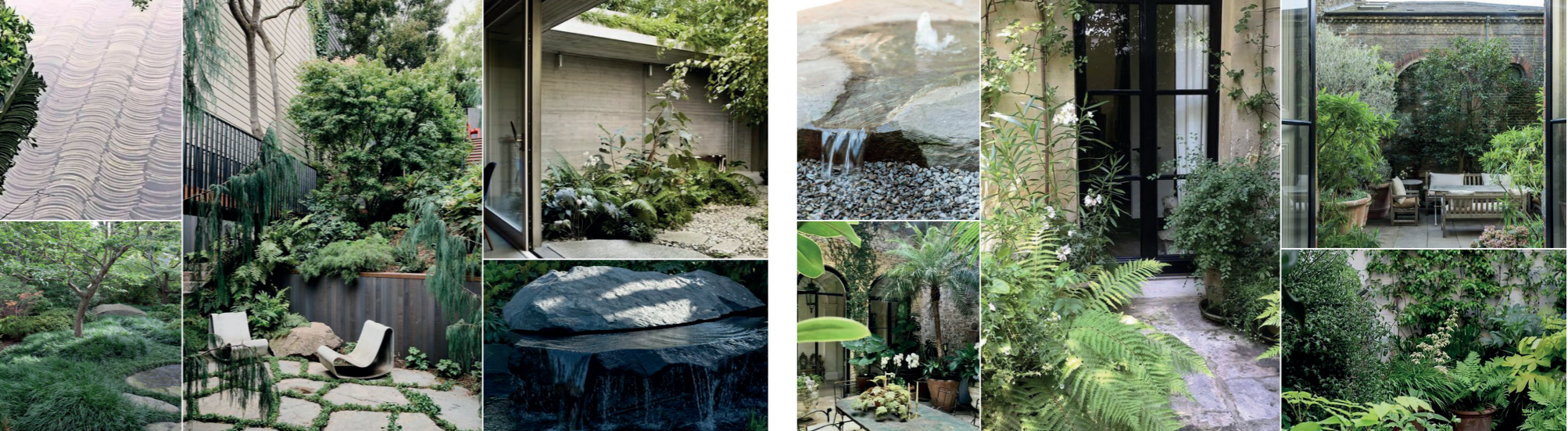
The lower ground courtyard is designed to provide a lush green outlook from the house, to be an inviting oasis surrounding the occupants in plants and greenery. A reflective pool will provide a dynamic element to the space, and will feature a textured base of stacked tiles to add a layer of interest. Ground cover will be evergreen and lush, and a cascading water feature will provide an element of sound, enhancing the wellbeing of the user.

The ground floor courtyard space will be informal and unstructured in terms of the planters. Free standing pots of varying scales will contain lush evergreen planting and trees, making the space flexible, layered, and full of life. A naturally formed stone water feature will provide a calming bubbling sound, and ground cover will soften the existing hard landscaping, which will be lifted, cleaned and re-laid.

- Plan Key*
- 1. Raised planter
  - 2. Natural stone water feature and reflection pool
  - 3. Irregular sandstone pavers with ground cover planting
  - 4. Proposed tree and planting
  - 5. Original sandstone pavers cleaned and relaid
  - 6. Round planters
  - 7. Ground cover planting
  - 8. Raised planter for climbing plants
  - 9. Natural stone water feature



Lower Ground [left] and Ground Floor [right] Courtyard Plans



Lower Ground Floor Precedents

Ground Floor Precedents

# 7.0 ALTERATIONS TO CLOSET WING LANDSCAPE APPROACH



1 Autumn House - Studio Bright - Melbourne, Australia  
 2 The Borders at Gravetye Manor - Sussex, England  
 3 Haverbrack Ave - Acre - Malvern, Victoria, Australia

4 Park House - Leeton Pointon Architects + Interiors - Melbourne, Australia  
 5 Autumn House - Studio Bright - Melbourne, Australia  
 6 Relo House - Arkham Projects - Merida, Mexico

**8.0**

# **ALTERATIONS TO MEWS HOUSE**

# 8.0 ALTERATIONS TO MEWS HOUSE

## MEWS HOUSE

### MEWS HOUSE APPROACH

The mews house is a dedicated space for relaxation and forms of exercise.

The proposals include exposing the roof structure and volume of space through removal of the modern plasterboard ceilings and the retention and relocation of the existing timber trusses.

The project is taking a long term conservation approach through the reconstruction of the mews roof. This will allow building elements, including trusses, purlins and slate tiles to be removed and restored where condition permits. Then the roof will be reconstructed using these materials with like for like replacements where necessary alongside the addition of suitable thermal insulation and detailed to provide higher air tightness to allow the space to perform more efficiently.

It is also proposed to better top-light the mews building through the better configuration of conservation-style rooflights on the yard-side slope of the roof, where the roof construction is more modern in age.

The internal finishes are intended to compliment the use of the space with calming, warm and neutral tones.

Wooden slats would extend up from the walls onto the lined inner surfaces of the ceiling, drawing attention to the frameless rooflight that provides a view of the sky from within the space.



1



2



3



4



5



- 1 Existing timber roof trusses within the mews roof space
- 2 Heong Gallery - Caruso St John - Cambridge
- 3 Pitch glaze conservation rooflight example
- 4 Yoga Studio - Invisible Studio - Newton, Somerset
- 5 3D model views of the proposed mews space