

7.0 ALTERATIONS TO CLOSET WING

CLOSET WING - EXISTING CONDITION



Experience of the courtyard looking from the main house principal floor



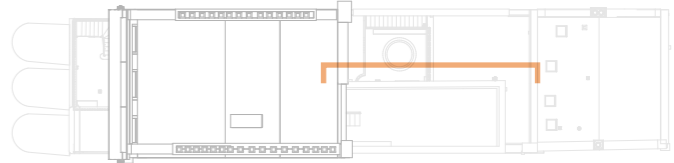
View from second floor bathroom down



View from mews back to the main house

7.0 ALTERATIONS TO CLOSET WING

CLOSET WING - FACADE PROPORTIONS



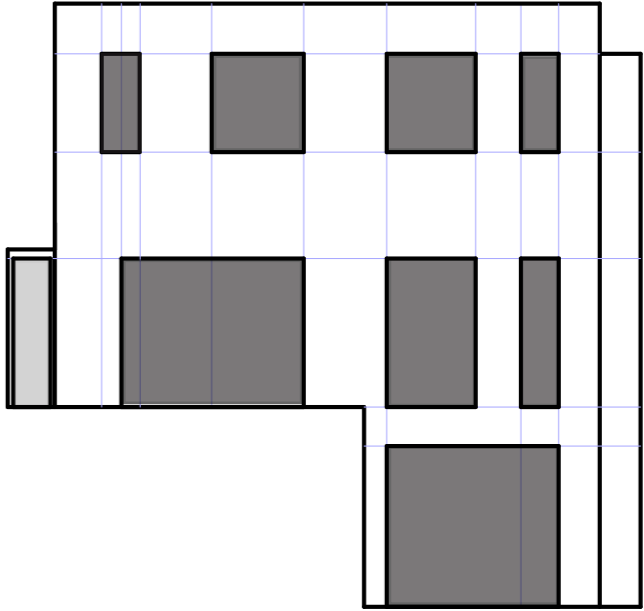
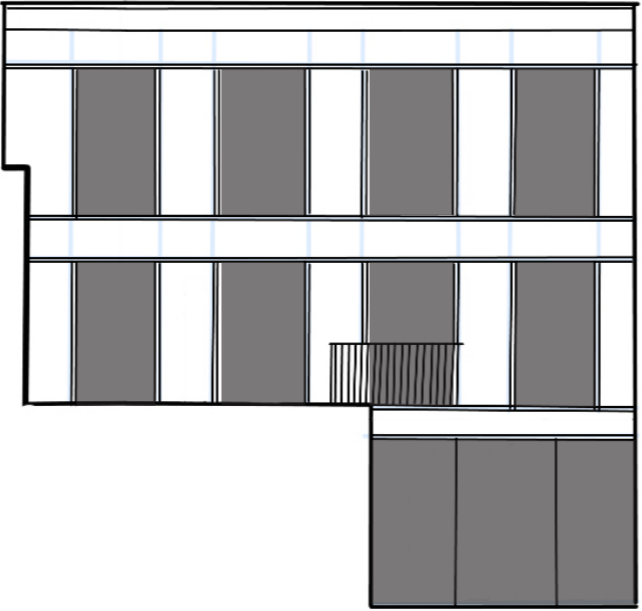
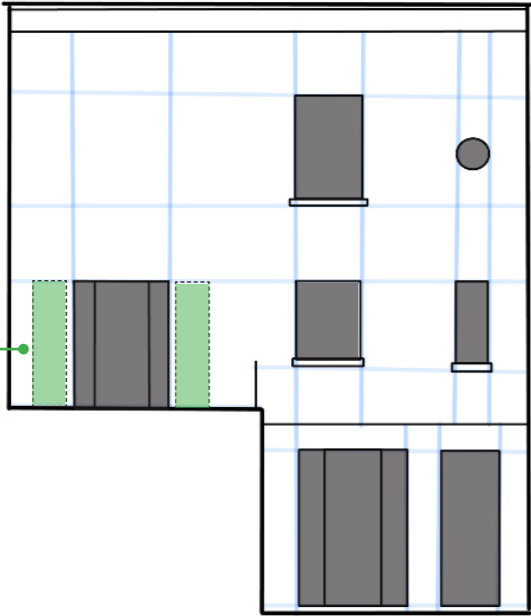
FACADE PROPORTIONS

In 1987 permission was granted for external and internal alterations to No.8. Externally, the rear elevation was regularised through the reinstatement of new facsimile windows, including the tall and arched headed stair window at second floor level as well as the reconfiguration of the rear wing and insertion of a lower ground floor glazed link.

The facade has been carefully developed post receipt of the pre app response to relate more closely to the existing condition, with a more asymmetrical approach, with greater solidity.

This approach will ensure that the closet wing will not read as a pavilion, and rather as a secondary form connecting to the historic listed building. The asymmetry and increased ratio of solid to void creates an appearance that is redolent and sympathetic to the secondary nature of the existing closet wing, yet also offers a new facade that is complementary to the principal part of the listed building.

Openings illustrated in extract from Carden & Godfrey 1987 drawings



Existing

Solid to void ratio - 4:1
80% solid
20% void

Solid to void ratio including 1987 drawings - 3:1
75% solid
25% void

Pre App

Solid to void ratio - 4:3
55% solid
45% void

Proposed

Solid to void ratio - 5:3
62% solid
38% void

7.0 ALTERATIONS TO CLOSET WING

EXISTING AND PROPOSED VIEWS - LGF MAIN HOUSE



1. LGF Main House - Existing
2. LGF Main House - Proposed

7.0 ALTERATIONS TO CLOSET WING EXISTING AND PROPOSED VIEWS - GF MAIN HOUSE



3. GF Main House - Existing
4. GF Main House - Proposed

7.0 ALTERATIONS TO CLOSET WING

EXISTING AND PROPOSED VIEWS - GF MEWS



5. GF Mews - Existing
6. GF Mews - Proposed

7.0 ALTERATIONS TO CLOSET WING

EXISTING AND PROPOSED VIEWS - FF MAIN HOUSE



7. FF Main House - Existing
8. FF Main House - Proposed

7.0 ALTERATIONS TO CLOSET WING COURTYARD



COURTYARD APPROACH

The bow shape has the benefit of allowing sunlight to flood into the spacious interior of the new kitchen/dining room and study.

It will also reveal the facade of the main house and new house, improving the ability to appreciate their architectural value.

Reclaimed stock bricks from the existing closet wing will be re-used to form the new curved facade, arranged in appreciation of their age.

The proposed palette intends to respond positively to the prevalent palette found on the main house and other regency buildings in the area.

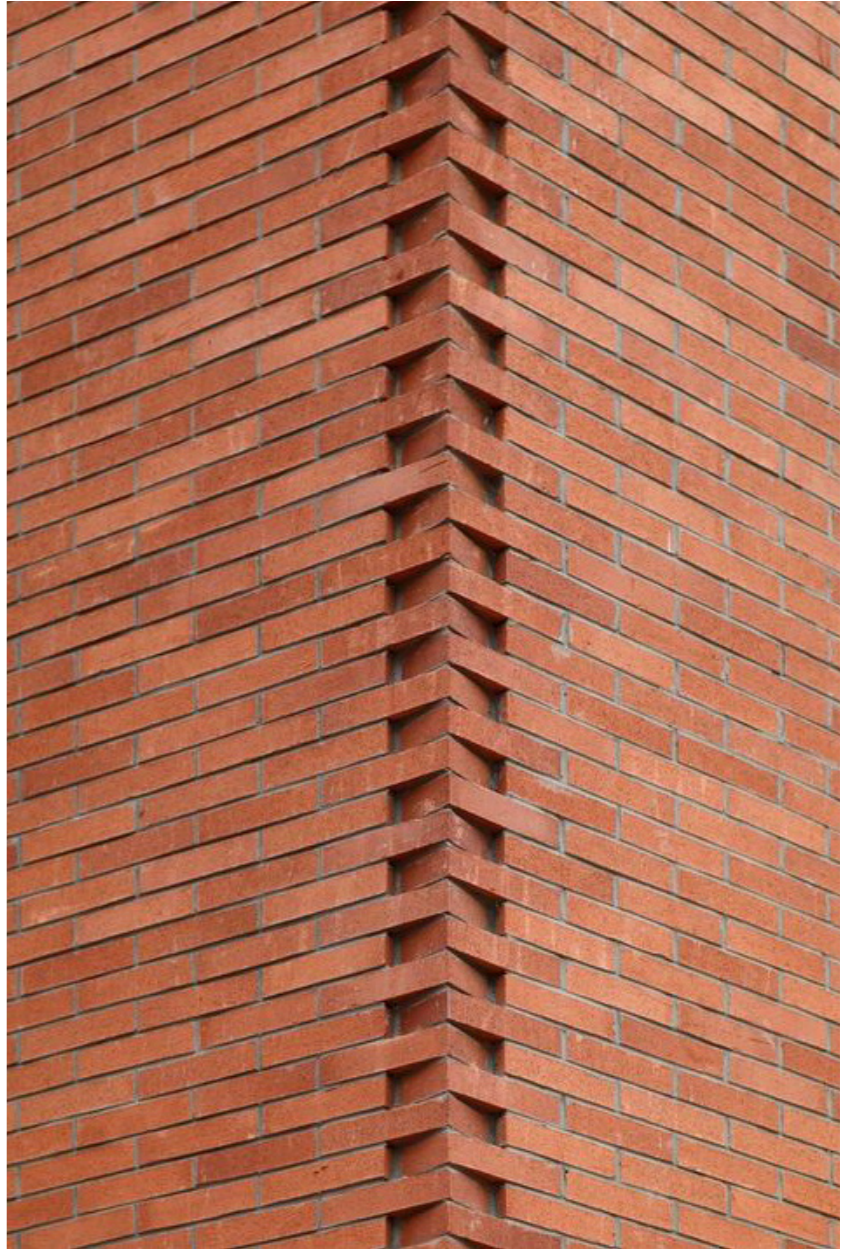
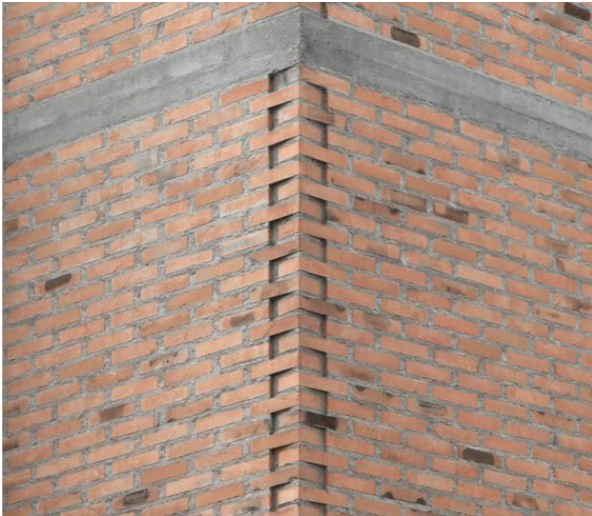
The precedent schemes adjacent give a sense of the material character and quality being proposed.



- 1 Corner House - 31/44, London
- 2 Vault House - BVDS Architects, London
- 3 Terrace Visual

7.0 ALTERATIONS TO CLOSET WING

BRICK DETAILING PRECEDENTS



7.0 ALTERATIONS TO CLOSET WING STUDIO/GYM



STUDIO APPROACH

The studio provides a calming retreat space with the intention that the lower ground courtyard becomes a zen garden.

The fenestrations are as open as possible with thin framed elegant curved glass sliding doors in order to bring soft natural light into the studio.

The internal finishes will be light and warm to creating a relaxing and calming space.



- 1 Three Piece House - Trias - Newcastle, NSW, Australia
- 2 Internal Soft Natural Lighting in Studio Space
- 3 Internal Studio Sketch