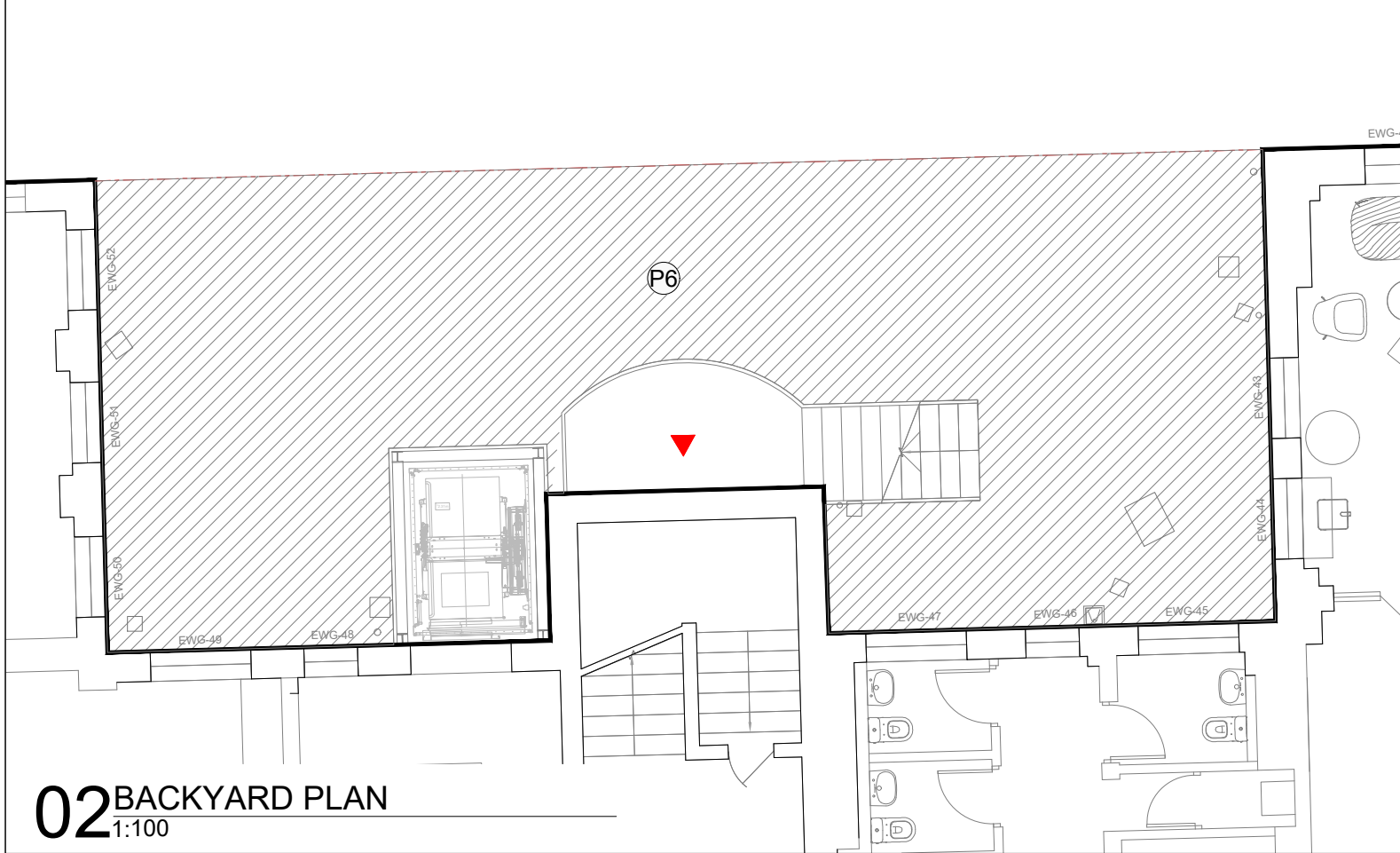


01 FRONT LANDSCAPE GA PLAN
1:100



02 BACKYARD PLAN
1:100

LEGEND

Hardworks

PAVING: All paving details refer to 1CP01-MDS_LDE-LS-DDE-SS08_SL23_GF-000003

- P1: Block Paving
- P2: Resin Bound Permeable Gravel Paving
- P3: Self-Binding Gravel Surface
- P4 Corduroy Tactile Paving
- P5: Concrete Slab
- P6: Asphalt

KERB AND EDGING: All kerb and edging details refer to 1CP01-MDS_LDE-LS-DDE-SS08_SL23_GF-000001

- E1: Paving Edge Border
- E2: Metal Edge
- E3: 145mm Wide Natural Stone Upstand Kerb
- E4: 145mm Wide Natural Stone Flush Kerb
- E5: 145mm Wide Natural Stone Drop Kerb

FURNITURE: Furniture details

F1 -F8 & F14
1CP01-MDS_LDE-LS-DDE-SS08_SL23_GF-000005,
F9 - F11
1CP01-MDS_LDE-LS-DDE-SS08_SL23_GF-000004,
F12 & F13
1CP01-MDS_LDE-LS-DDE-SS08_SL23_GF-000007

- F1: Movable Timber Planter : 1(W) x 0.75(D) x 0.80(H)m, Scots Pine
- F2: Wheelchair accessible Timber Planter: 1(W) x 0.75(D) x 0.80(H)m
- F3: Working Table: 2(W) x 0.75(D) x 0.80(H)m
- F4: Timber block seat: 0.45(W) x 0.45(D) x 0.45(H)m
- F5: Timber Tool Shed: 2.15(W) x 0.8(D) x 2.3(H)m
- F6: Watering Post
- F7: Triple General Waste / Recycling Bin, 300L
- F8: Movable Metal Planter: 1.2(W) x 0.5(D) x 0.7(H)m
- F9: Pre-cast concrete seat Kellen Elementale solid base
- F10: Timber Clad Pre-cast concrete seat Kellen Elementale LH/RH solid base
- F11: Armchair Style Seat
- F12: Cycle Stand Stainless Steel Sheffield Stand
- F13: Covered Cycle Shelter with Two Tier Cycle Racks
- F14: Compost Bin

WALL / FENCE

- Existing Brick Wall to be removed
- W1: Firewall: Detail refer to 1CP01-MDS_LDE-LS-DDE-SS08_SL23_GF-000014
- Fe1: 2.4m high Security Fence: Detail refer to 1CP01-MDS_LDE-LS-DDE-SS08_SL23_GF-000002

STRUCTURE

- Existing Building to be removed
- S1: Refusal Shelter: Detail refer to 1CP01-MDS_LDE-LS-DDE-SS08_SL23_GF-000008
- S2: Security Kiosk: Kiosk supplier options to the landscape specification 1CP01-MDS_LDE-LS-SPE-SS08_SL23_GF-000001
- S3: Substation: Design by others

DRAINAGE

- D1: Slot Drainage : Detail refer to 1CP01-MDS_LDE-LS-DDE-SS08_SL23_GF-000001

0+99.00 Existing Level

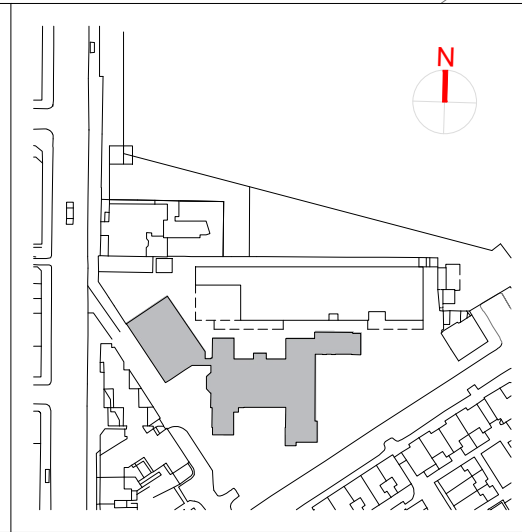
0+97.60 Proposed Level

Softworks: All soft work details refer to 1CP01-MDS_LDE-LS-DDE-SS08_SL23_GF-000009

- Existing Trees to be retained
- Specimen Trees
- Herbaceous Planting Mix
- Shade Tolerant Planting Mix
- Rain Garden
- Amenity Grass
- Wildflower Meadow

C01	First Submission	MP	KM	DW		HS2 accepts no responsibility for any circumstances which arise from the reproduction of this document after alteration, amendment or abbreviation or if it is issued in part or issued incompletely in any way.
C02	Stage 4 Submission	MP	KM	DW		© Crown Copyright and database right 2020. All rights reserved. Ordnance Survey Licence number 100049190
C03	Entrance area design change	MP	KM	DW		© Crown Copyright material is reproduced with the permission of Land Registry under delegated authority from the Controller of HMSO.
C04	Entrance area design change	MP	KM	DW		This material was last updated on 2020 and may not be copied, distributed, sold or published without the formal permission of Land Registry. Only an official copy of a title plan or register obtained from the Land Registry may be used for legal or other official purposes.
C05	Entrance area design change	MD	KM	DW		
Rev	Description	Drawn	Checked	Approved	Con Acc	Scale with caution as distortion can occur.

Legends/Notes:
1. This drawing to be read in conjunction with detail drawings 1CP01-MDS_LDE-LS-DDE-SS08_SL23_GF-000001 to 000009 and Landscape Specification 1CP01-MDS_LDE-LS-SPE-SS08_SL23_GF-000001
2. Do not scale from drawing, use figured dimensions only and all dimensions to be checked onsite.
3. All drainage to Engineer's specifications.
4. Work by others: Building works, CCTV Cameras, and Construction hoarding fencing are shown for information only and are not part of this package.
5. The external lighting strategy refer to drawing 1CP01-MDS_LDE-LS-DPL-SS08_SL23_GF-000009 - External lighting strategy Plan
6. The biodiversity measure, as outlined in Document 1CP01-MDS_ARP-EV-PLN-SS08_SL23-990002 (Maria Fidelis Old School Building - Biodiversity Enhancement Plan), will be provided by others.



Registered in England
Registration No. 06791686
Registered office:
2 Snow Hill, Queensway,
Birmingham, B4 6GA

Official

Stage	4	Project/Contract	1CP01	Creator/Originator	MDS	Sub Originator	LDA Design
Drawing Title	SS08	Work Package Description	SL23	Discipline/Function	LS	System description	DGA
Drawing Title	General Arrangement Plan			Drawn by	MD	Checked by	KM
				Approved by	DW	Date	25/06/24
				Scale	1:100	Size	A1
				Suitability	S6	Rev.	C04
				Drawing No.	1CP01-MDS_LDE-LS-DGA-SS08_SL23_GF-000003		