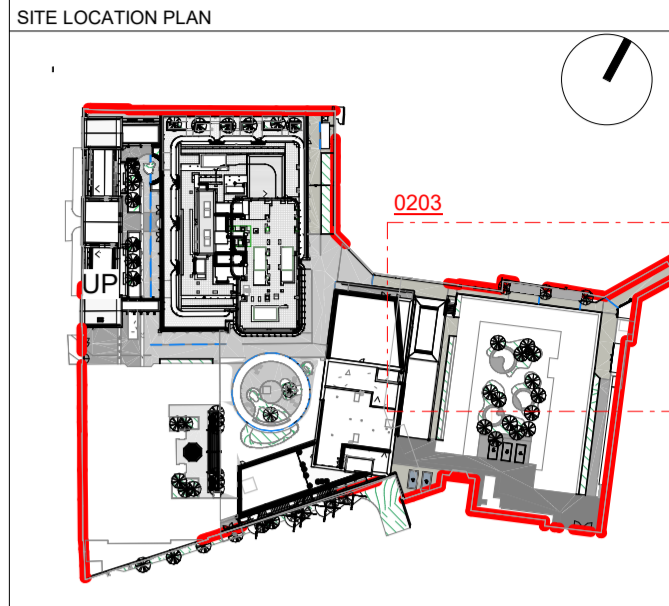


**GENERAL NOTES:**  
 1. DO NOT SCALE FROM THIS DRAWING. DIMENSIONS GOVERN.  
 2. ALL DIMENSIONS ARE IN MILLIMETRES UNLESS NOTED OTHERWISE.  
 3. ALL DIMENSIONS SHALL BE VERIFIED ON SITE BEFORE PROCEEDING WITH THE WORK.  
 4. PLINCKE SHALL BE NOTIFIED IN WRITING OF ANY DISCREPANCIES.  
 5. PLINCKE ACCEPTS NO LIABILITY FOR ANY EXPENSE LOSS OR DAMAGE OF WHATSOEVER NATURE AND HOWEVER ARISING FROM ANY VARIATION MADE TO THIS DRAWING OR IN THE EXECUTION OF THE WORK, TO WHICH IT RELATED WHICH HAS NOT BEEN REFERRED TO THEM AND PRIOR APPROVAL OBTAINED.

**A1** Original Sheet Size



**CDM**  
 IN ADDITION TO THE HAZARDS / RISKS NORMALLY ASSOCIATED WITH THE TYPES OF WORK DETAILED ON THIS DRAWING, NOTE THE FOLLOWING:

ITEM NO.	RISK REGISTER DETAILS
	Refer to 9950 drawing series for CDM risks

**KEY**

	Phase 1 works boundary
	Ref. E04 250x145mm PCC upstand conservation kerb
	Ref. E05 145x145mm PCC flush conservation kerb
	Ref. E07 150x3mm flat top flush Conservation edge
	Drainage channel - To engineers details
	Drainage gully - To engineers details
	Ref. S03 PCC 300x100x80 'Modul' textured block
	Ref. S04 PCC 200x100x80 'Modul' textured block
	Ref. S05 PCC 400x400x50mm corduroy paving
	Ref. S07 10mm Grey Gravel
	Ref. S08 Step risers - Concrete
	Ref. W02 Calthorpe Estate brick clad boundary wall
	Ref. W03 Brick clad upstand / retaining wall
	Ref. F02 715x80x48 cycle stand, brushed steel. End stand to include tapping rail
	Ref. F04 600x400x1000mm Litter bin
	Ref. F08 Handrail - wall mounted
	Ref. F09 Handrail, free standing ground fixed
	Ref. F10 Balustrade
	Ref. F18 Illuminated bollard (refer to engineers details)
	Proposed Landscaping to be delivered in future phase
	Area of Interim Landscape - details to be approved under s106 obligation

P011	FOR PLANNING	09.06.24	LP	GW
P010	STAGE 4B ISSG COORDINATION	15.03.24	LP	GW
P09	STAGE 4B COORDINATION	05.11.21	AG	RW
P08	PLANTERS REMOVED	11.05.21	AY	RW
P07	GATE G4 REMOVED	04.05.21	AY	RW
P06	4B ISSUE AMENDS TO SUBSTATION ANNOTATION	16.12.20	AY	RW
P05	4B ISSUE AMENDS FOLLOWING INTERNAL REVIEW	14.12.20	AY	RW
P04	SUBSTATION LAYOUT ADDED	12.08.20	AY	RW
P03	DESIGN TEAM COORDINATION	14.07.20	AY	RW
P02	DRAWING CONVERTED FROM CAD TO REVIT STAGE 4B DRAFT ISSUE	27.09.19	CJ	AC
P01	STAGE DESIGN DEVELOPMENT	16.08.19	CJ	AC
P01	S03/S04 ISSUE	16.08.19	CJ	AC
REV.	REV. DESCRIPTION	DATE	DWN	CHK

**plincke.**  
 landscape urbanism design      www.plincke.com

London      Manchester  
 +44 (0)207 739 3330      +44 (0)161 237 9223

**Project**  
 ION/DRI 256 Gray's Inn Road

**Drawing**  
 DETAIL HARDWORKS PLAN 03

**Date**  
 16.08.19

**Scale**  
 1:100

Status	Stage	Drn:	Chk
S3	4B	CJ	AC

**Drawing**  
 BEMP-PLI-P1-ZZ-DR-L-94-0203

**Rev**  
 P11

**NOTES:**  
 - To be read in conjunction with:  
 BEMP-PLI-P1-ZZ-SH-L-94-0031 External works finishes schedule  
 BEMP-PLI-P1-ZZ-SP-L-94-0021 External works specification  
 - Site gates (to architects details)  
 Ref G01 - Secure fence & gate to Air intake compound  
 Ref G02 - Alexandra Wing passage gate  
 Ref G03 - Main access gate from Gray's Inn Road  
 Ref G04 - Cubitt Street gate  
 Ref G05 - Frances Gardner House access gate & fence  
 Ref G06 - Calthorpe Project boundary access gate & fence  
 Ref G07 - St. Andrews Gardens boundary gate & fence  
 - W01/ W02/ W03 wall widths etc. Refer to engineers drawings  
 - Floating slab movement joints TBC. Refer to Engineers drawings