

PROPOSED FOUNDATION DIAGRAM - scale 1:100

The works consist of installation of ground screw foundations of variable diameter and lengths as per product range. The project includes marking out, drilling operations, the installation of ground screw using torque driver or ground hog and final dimension and level checks.

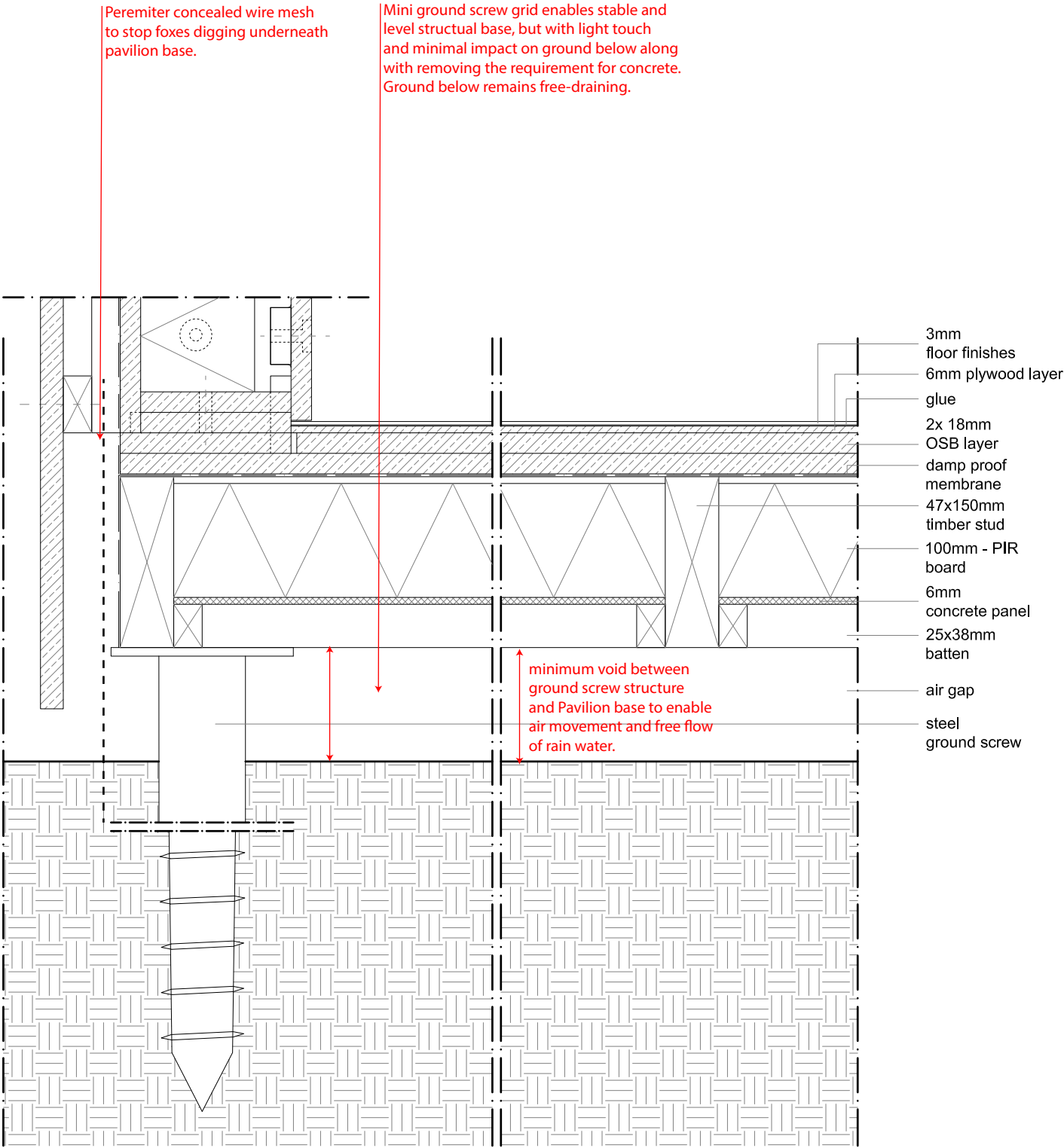
The works will be executed after ensuring any client site rules or sign-in procedures are adhered to and after physical barrier is placed at the areas where other contractors or visitors may be able to venture into the construction area. The access to and from working area will be kept clear and safe and visible signage will be displayed at all times.

After carrying out pre-use checks on all plant and equipment will be marked out the locations of ground screws, and will be pre-drilled marked holes in preparation for ground screw insertion. Holes will be kept as level as possible.

The install of ground screws will be done using 110v torque gun.

All spoil, waste, plant, and materials will be removed from site and so any barriers positioned for site works to handover of site to client.

All waste generated from the construction activities will be removed from site daily and disposed of in accordance with waste management procedure.



TYPICAL FLOOR BUILD UP - scale 1:5

Flat 1 124 Fellows Road, NW3 3JH, London  
Proposed Foundations and Ground drainage

FOR INFORMATION ONLY

Do not scale from this drawing. Use figured dimensions only. Figured dimensions are in millimetres. All levels are in metres. All dimensions and levels shall be verified on site before proceeding with works. Detailed site survey to be carried out to verify positions and level relationships with site features and ordnance survey. Boundaries are indicative only and are to be verified by others. This drawing is to be read in conjunction with other documentation from the architect, design team, main contractor and employer's agent. The architect must be notified of any discrepancies. Where building components are described in the specification as contractor designed, "construction" information relating to those components that are shown on this drawing represents design intent only.

REV	DATE	DESCRIPTION
P1	24.07.2024	FOR INFORMATION ONLY

All Intellectual Property Rights Reserved



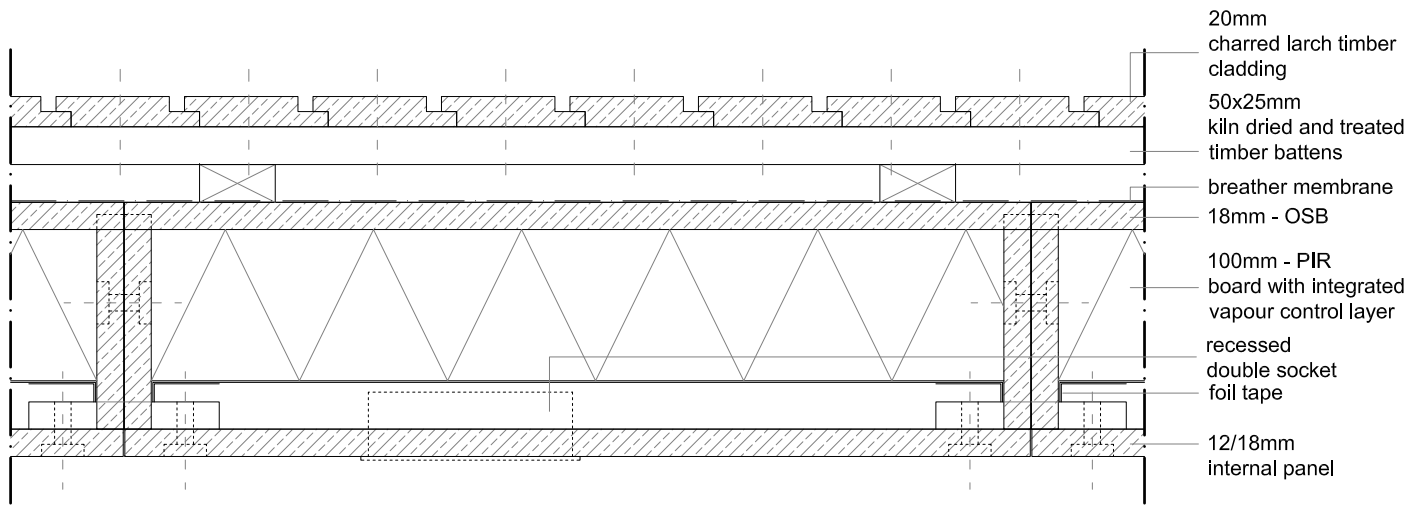
Drawing not for construction



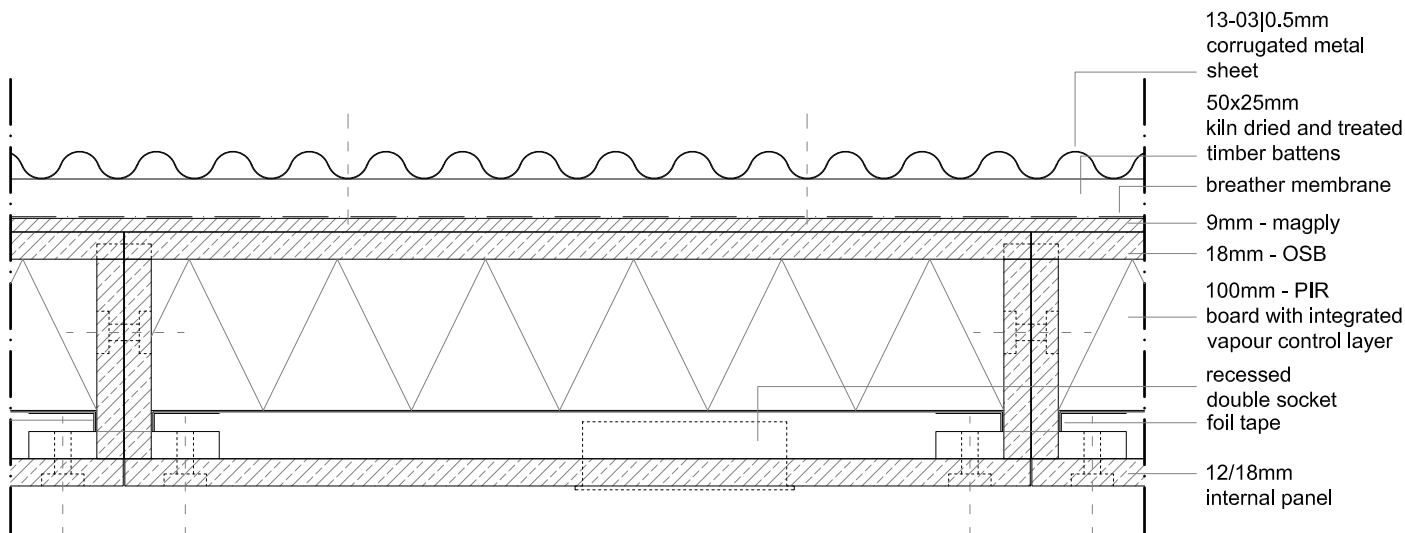
**BOANO PRIŠMONTAS**  
40, Ermine Mews  
London E2 8BF  
+44 (0) 7447 041224  
hello@boanoprismontas.com  
BP JOB NO: 2410

Flat 1, 124 Fellows Road, NW3 3JH, London  
**PROPOSED FOUNDATIONS  
PLANNING**  
**2410\_07\_300**  
SCALE 1 : 5/1:100@A3 | 1:10/1:200 @A4

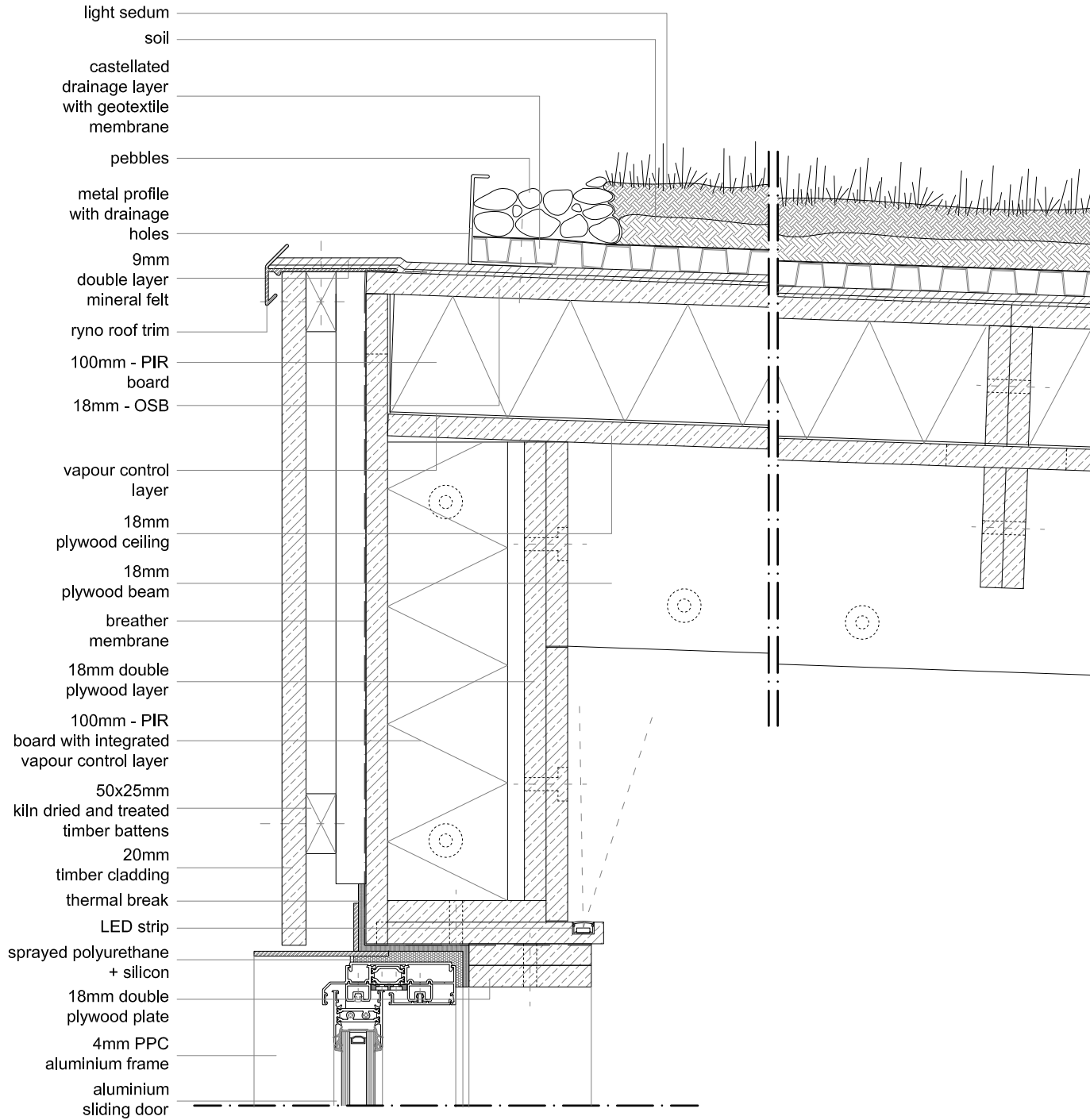
P1



TYPICAL WALL BUILD UP 1 - scale 1:5



TYPICAL WALL BUILD UP 2 - scale 1:5



TYPICAL ROOF BUILD UP 2 - scale 1:5

FOR INFORMATION ONLY

Do not scale from this drawing. Use figured dimensions only. Figured dimensions are in millimetres. All levels are in metres. All dimensions and levels shall be verified on site before proceeding with works. Detailed site survey to be carried out to verify positions and level relationships with site features and ordnance survey. Boundaries are indicative only and are to be verified by others. This drawing is to be read in conjunction with other documentation from the architect, design team, main contractor and employer's agent. The architect must be notified of any discrepancies. Where building components are described in the specification as contractor designed, "construction" information relating to those components that are shown on this drawing represents design intent only.

REV	DATE	DESCRIPTION
P1	24.07.2024	FOR INFORMATION ONLY

Drawing not for construction

All Intellectual Property Rights Reserved



**BOANO PRIŠMONTAS**  
 40, Ermine Mews  
 London E2 8BF  
 +44 (0) 7447 041224  
 hello@boanoprismontas.com  
 BP JOB NO: 2410

Flat 1, 122 and 124 Fellows Road, NW3 3JH, London  
**TYPICAL ROOF - WALL BUILD UPS**  
**PLANNING**  
**2410\_07\_301**  
 SCALE 1:5 @A3 | 1:10 @A4

**P1**

0800 774 7650  
info@greenroofsdirect.com

146 Shore Road, Magheramorne  
Larne, Co Antrim, BT40 3HY

# Green Roofs Direct

## Lightweight System Specification



# EverMat Lightweight Specification

## Consists of: .

Separation/Protection Fleece, Natural Drainage Layer and Sea Hardened Sedum Blanket

Optional extras include root barrier membrane, trims and pebbles.

## Separation/Protection Layer:

EN 9864

---

<b>Static puncture</b>	
<b>Drainage layer:</b>	2100 g/m <sup>2</sup> (- 120 g / + 100 g)

---

<b>Separation Layer:</b>	300 g/m <sup>2</sup> (- 3 g / + 5 g)
--------------------------	--------------------------------------

---

**EN 12236**

Filter fleece:	1600 N
----------------	--------

---

## Water permeability

EN 11058

<b>normal to the plane</b>	0.11 m/s (± 0.01) (V
<b>H50)</b>	

## Application conditions / Limits:

Temperature - The use of Protection Layer 30 is limited to geographical locations with average monthly minimum temperatures of -50 °C. Permanent ambient temperature during use is limited to +50 °C.

## Drainage Layer:

<b>Product</b>	BKAQ50 (90/10)
<b>Granule size</b>	5-10mm
<b>Density</b>	Approx. 300kg/m <sup>3</sup>
<b>Resistance to Granule Fragmentation</b>	>1.5N/mm <sup>2</sup>
<b>Water Absorption</b>	15%-30%
<b>Thermal Conductivity</b>	0.1

**Total pore volume** > 30-40 Vol %

**Max water capacity** ≥ 75% Vol

### Key data

Dry weight approx. 15kg/m<sup>2</sup>

Water saturated 30kg/m<sup>2</sup>

**Organic content** ≥0 g/L

**pH value** 8

**Compression factor** 1,2

## Vegetation Layer:

Please see datasheet for information

## Ecology, Health and Safety information

The product does not fall within the EC-regulation of hazardous goods. As a result, a material safety data sheet following EC-Guideline 91/155 EWG is not needed to bring the product to the market, transport or use it. The product does not damage the environment when used as specified.

## Fire Certification

Broof T4: UK BS 476:Part 3:2004.

The evermat core system as described in and under the conditions of the test is classified in class EXT F.AA according to the British Standard BS476 Part 3.

We achieved a AA rating for surface spread of fire.

# Sedum Blanket Datasheet

Carrier	Predominately rotttable Cocomat with geo textile weave
Substrate	LECA, Compost, Coir pith and fibre, horticultural grit.
Vegetation Composition	Sedum Acre Aureum , Sedum Album Coral Carpet, Sedum Album mini, Sedum Album Athoum, Sedum Hispanicum Sedum Summer Glory, Sedum Reflexum Sedum Weihenstephaner Gold, Sedum Voodoo
Vegetation Coverage	Vegetation coverage ,
Thickness	2.5cm - 4.5cm
Water saturation weight	18 -22kg/m <sup>2</sup>
Standard size	1m x 1m

