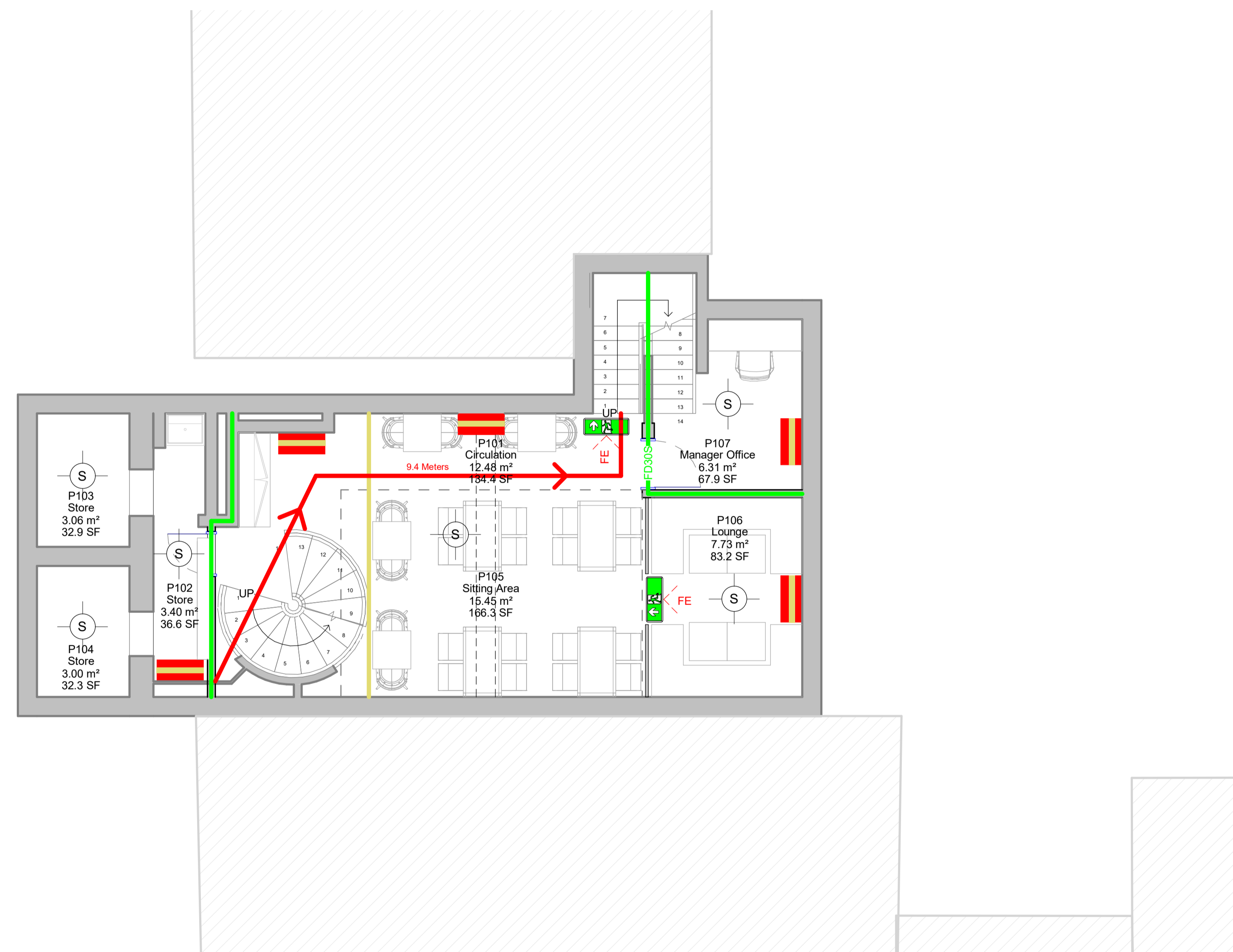


Copyright AGA Associates Ltd  
 NOTES  
 1 The Contractor must check and confirm all dimensions  
 2 All discrepancies must be reported and resolved by the Architect before works commence  
 3 All work and materials to be in accordance with current applicable Statutory Legislation and to comply with all relevant Codes of Practice and British Standards

**Fire Strategy Legend**

- 60min Fire Curtain
- 30min 30 Minutes Fire Rating
- 60min 60 Minutes Fire Rating
- Wall Mounted Fire Extinguisher Cabinet
- Wall Mounted Water Fire Extinguisher Cabinet (For wood, paper, textile and solid material fires)
- Wall Mounted Powder Fire Extinguisher Cabinet (For Liquid and Electrical Fires)
- Wall Mounted Foam Fire Extinguisher Cabinet (For Use on Liquid Fires)
- Wall Mounted Fire Carbon Dioxide Extinguisher Cabinet (For Liquid and electrical fires)
- H Heat detector fixed to ceiling
- S Fire / Carbon Monoxide detector fixed to ceiling
- Extent of Premises Boundary Line
- Travel Distance
- Evacuation Distance
- Evacuation Assembly Point
- REQUIRED DOOR RATING**
- FD60S 60 Minute Fire door with smoke seals and self closers
- FD30S 30 Minute Fire door with smoke seals and self closers
- FE Final escape
- Illuminated emergency sign Exit above escape doors



**1** 26099-Level B1 Fire Safety Plan  
 SCALE: 1 : 50

P01 Issued For Planning 02.08.24  
 Rev \_\_\_\_\_ Date \_\_\_\_\_



**Architecture & Interiors**  
 10 Fitzroy Square, Fitzrovia, London, W1T 5HP  
 T020 8014 8130  
 www.aga-associates.com

Client  
**Huong Nguyen**

Project  
**31 Betterton Street, Camden, London, WC2H 9BQ**

Drawing  
**Fire Safety Plan  
 Level B1 Fire Safety Plan**

RJ Ref	Scale (A1)	Status	Revision
1093	1 : 50	Planning	<b>P01</b>

Drawing Number  
**1093-AGA-AGA-AZ-ZZ-DR-A-26099**