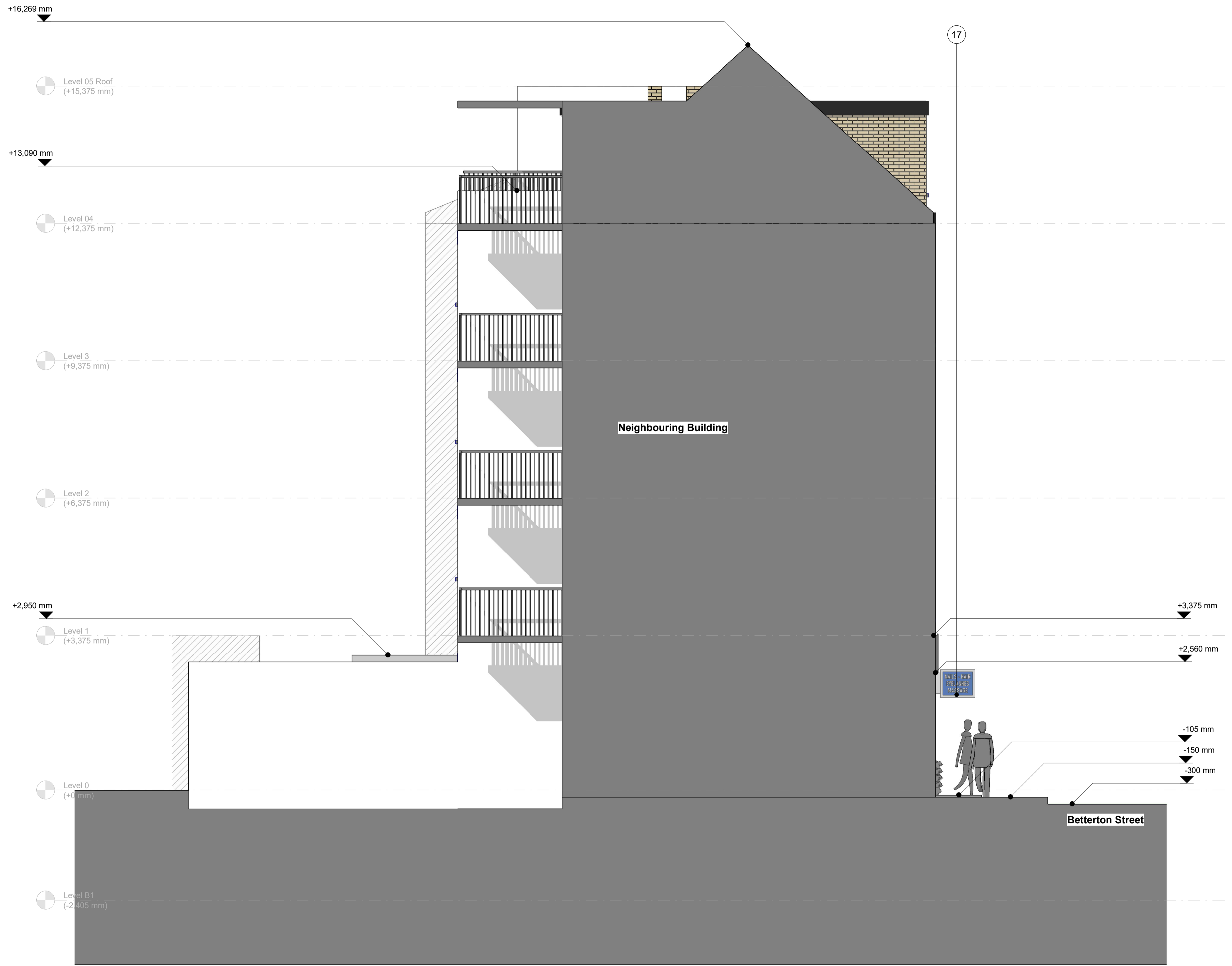


- NOTES**
- 1 The Contractor must check and confirm all dimensions
 - 2 All discrepancies must be reported and resolved by the Architect before works commence
 - 3 All work and materials to be in accordance with current applicable Statutory Legislation and to comply with all relevant Codes of Practice and British Standards

- EXTERNAL FINISHES**
- 1 Yellow Buff Brick
 - 2 Black Painted Brick Wall
 - 3 Oyster white Metal Retractable Quarter Round Awning (RAL 1013)
 - 4 Clear Double Glazing
 - 5 White Timber Frame Window
 - 6 Grey Lead Flashing
 - 7 White Timber Door
 - 8 White Timber Frame Door
 - 9 Black Timber Door
 - 10 Patina green Timber Panel (RAL Colour 6000)
 - 11 Patina green Timber Partial Door with Clear Double Glazing
 - 12 Artificial Exterior Wall Vegetation
 - 13 Matt Black Square Bar Door Pull Handle
 - 14 Patina green Signage Board
 - 15 Blue Signage Board with White and Yellow Letter
 - 16 Patina green Timber Frame Window
 - 17 Blue Projecting Sign
- 500 Ventilation System
 - 501 Mechanical Duct
 - 502 Air Intake Outtake High vents
 - 503 Kitchen Vinyl Floor
 - 504 Stainless Steel Kitchen Work-Top
 - 505 240L Food Waste Bin
 - 506 240L General Waste Bin
 - 507 Air Conditioning unit
- Hot Water Vertical Routes
 - Cold Water Vertical Routes
 - External Waste Water Connection
 - Hot Water Horizontal Underfloor Routes
 - Cold Water Horizontal Underfloor Routes
 - Grey Water Waste Horizontal Underfloor Routes



1 20252-East Elevation Existing
SCALE: 1 : 50

P01 Issued For Planning 02.08.24
Rev _____ Date _____



Architecture & Interiors
10 Fitzroy Square, Fitzrovia, London, W1T 5HP
T020 8014 8130
www.aga-associates.com

Client
Huong Nguyen

Project
31 Betterton Street, Camden, London, WC2H 9BQ

Drawing
**General Arrangement Elevation
East Elevation Existing**

RJ Ref	Scale (A1)	Status	Revision
1093	1 : 50	Planning	P01

Drawing Number
1093-AGA-AGA-AZ-ZZ-DR-A-20252

