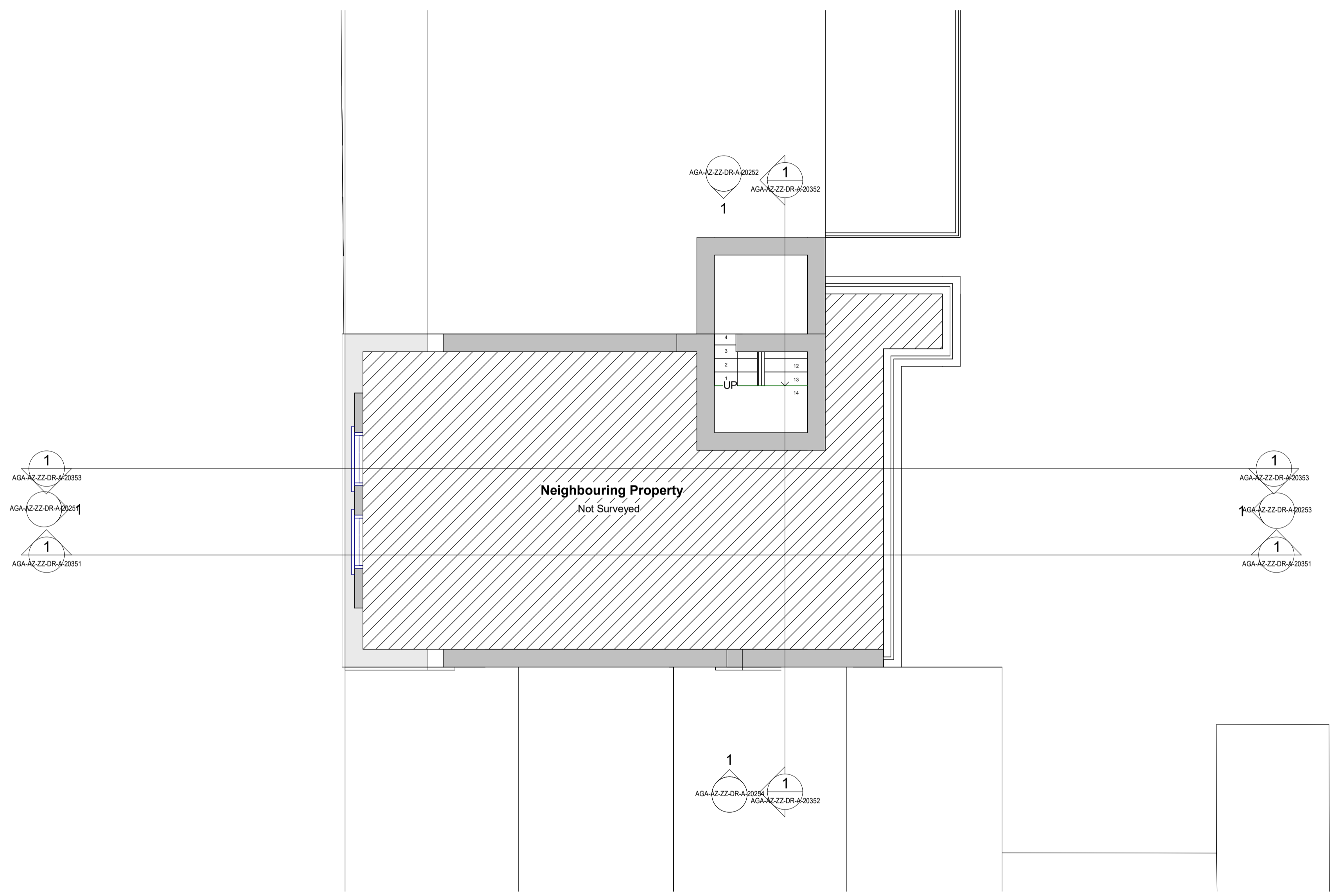


Copyright AGA Associates Ltd
 NOTES
 1 The Contractor must check and confirm all dimensions
 2 All discrepancies must be reported and resolved by the Architect before works commence
 3 All work and materials to be in accordance with current applicable Statutory Legislation and to comply with all relevant Codes of Practice and British Standards

EXTERNAL FINISHES

- 1 Yellow Buff Brick
- 2 Black Painted Brick Wall
- 3 Oyster white Metal Retractable Quarter Round Awning (RAL 1013)
- 4 Clear Double Glazing
- 5 White Timber Frame Window
- 6 Grey Lead Flashing
- 7 White Timber Door
- 8 White Timber Frame Door
- 9 Black Timber Door
- 10 Patina green Timber Panel (RAL Colour 6000)
- 11 Patina green Timber Partial Door with Clear Double Glazing
- 12 Artificial Exterior Wall Vegetation
- 13 Matt Black Square Bar Door Pull Handle
- 14 Patina green Signage Board
- 15 Blue Signage Board with White and Yellow Letter
- 16 Patina green Timber Frame Window
- 17 Blue Projecting Sign
- 500 Ventilation System
- 501 Mechanical Duct
- 502 Air Intake Outtake High vents
- 503 Kitchen Vinyl Floor
- 504 Stainless Steel Kitchen Work-Top
- 505 240L Food Waste Bin
- 506 240L General Waste Bin
- 507 Air Conditioning unit
- Hot Water Vertical Routes
- Cold Water Vertical Routes
- External Waste Water Connection
- Hot Water Horizontal Underfloor Routes
- Cold Water Horizontal Underfloor Routes
- Grey Water Waste Horizontal Underfloor Routes



1 20154-Level 04 Existing
 SCALE: 1 : 50



P01 Issued For Planning 02.08.24
 Rev _____ Date _____



AGA ASSOCIATES
 Architecture & Interiors
 10 Fitzroy Square, Fitzrovia, London, W1T 5HP
 T020 8014 8130
 www.aga-associates.com

Client
Huong Nguyen

Project
31 Betterton Street, Camden, London, WC2H 9BQ

Drawing
**General Arrangement Plan
 Level 04 Existing**

RJ Ref	Scale (A1)	Status	Revision
1093	1 : 50	Planning	P01

Drawing Number
1093-AGA-AGA-AZ-ZZ-DR-A-20154