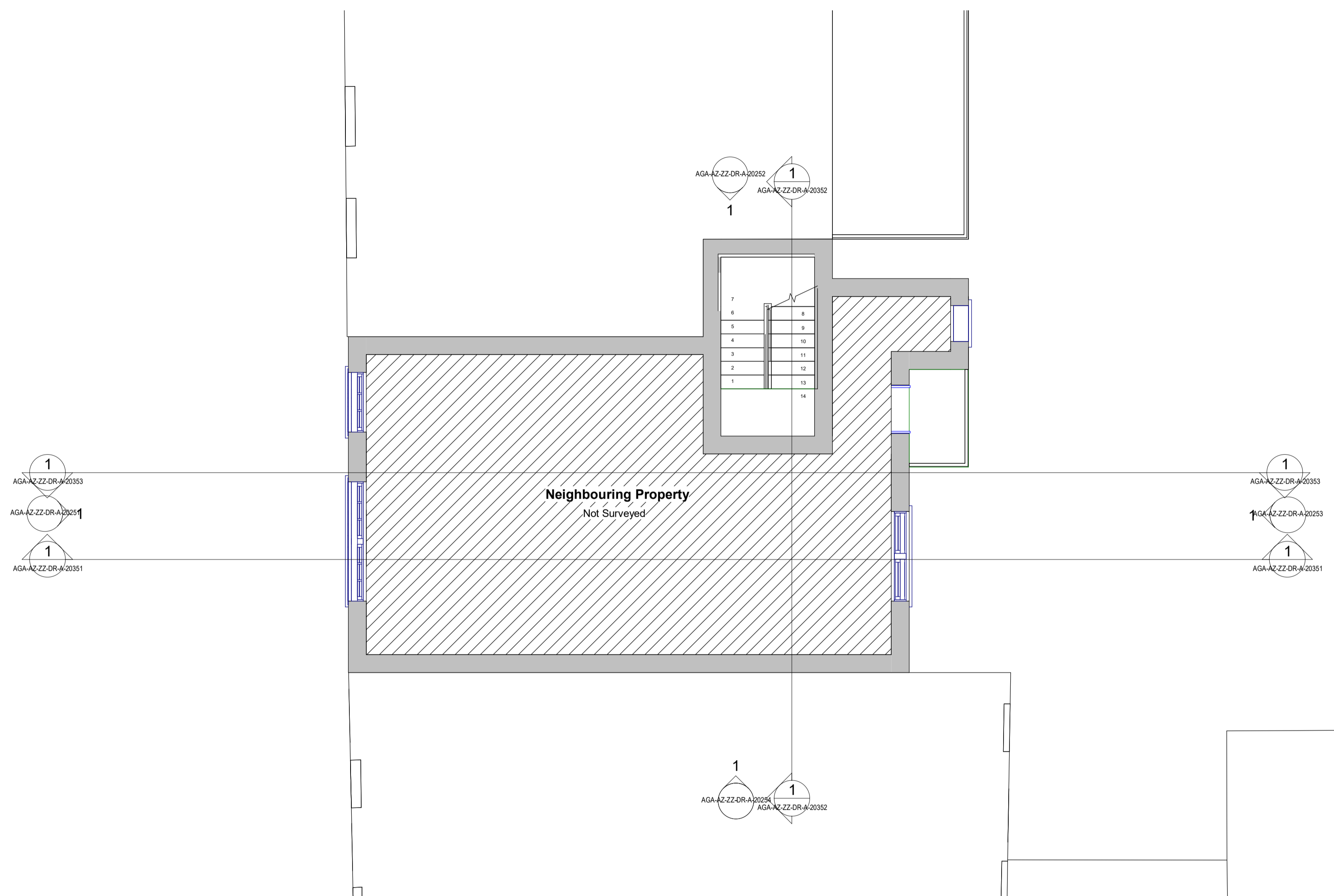


Copyright AGA Associates Ltd  
 NOTES  
 1 The Contractor must check and confirm all dimensions  
 2 All discrepancies must be reported and resolved by the Architect before works commence  
 3 All work and materials to be in accordance with current applicable Statutory Legislation and to comply with all relevant Codes of Practice and British Standards

**EXTERNAL FINISHES**

- ① Yellow Buff Brick
- ② Black Painted Brick Wall
- ③ Oyster white Metal Retractable Quarter Round Awning (RAL 1013)
- ④ Clear Double Glazing
- ⑤ White Timber Frame Window
- ⑥ Grey Lead Flashing
- ⑦ White Timber Door
- ⑧ White Timber Frame Door
- ⑨ Black Timber Door
- ⑩ Patina green Timber Panel (RAL Colour 6000)
- ⑪ Patina green Timber Partial Door with Clear Double Glazing
- ⑫ Artificial Exterior Wall Vegetation
- ⑬ Matt Black Square Bar Door Pull Handle
- ⑭ Patina green Signage Board
- ⑮ Blue Signage Board with White and Yellow Letter
- ⑯ Patina green Timber Frame Window
- ⑰ Blue Projecting Sign
- ⑸ Ventilation System
- ⑹ Mechanical Duct
- ⑺ Air Intake Outtake High vents
- ⑻ Kitchen Vinyl Floor
- ⑽ Stainless Steel Kitchen Work-Top
- ⑾ 240L Food Waste Bin
- ⑿ 240L General Waste Bin
- ⓪ Air Conditioning unit
- Hot Water Vertical Routes
- Cold Water Vertical Routes
- External Waste Water Connection
- Hot Water Horizontal Underfloor Routes
- Cold Water Horizontal Underfloor Routes
- Grey Water Waste Horizontal Underfloor Routes



① 20153-Level 03 Existing  
 SCALE: 1 : 50

P01 Issued For Planning 02.08.24  
 Rev \_\_\_\_\_ Date \_\_\_\_\_



**Architecture & Interiors**  
 10 Fitzroy Square, Fitzrovia, London, W1T 5HP  
 T020 8014 8130  
 www.aga-associates.com

Client  
**Huong Nguyen**

Project  
**31 Betterton Street, Camden, London, WC2H 9BQ**

Drawing  
**General Arrangement Plan  
 Level 03 Existing**

RJ Ref	Scale (A1)	Status	Revision
1093	1 : 50	Planning	<b>P01</b>

Drawing Number  
**1093-AGA-AGA-AZ-ZZ-DR-A-20153**

