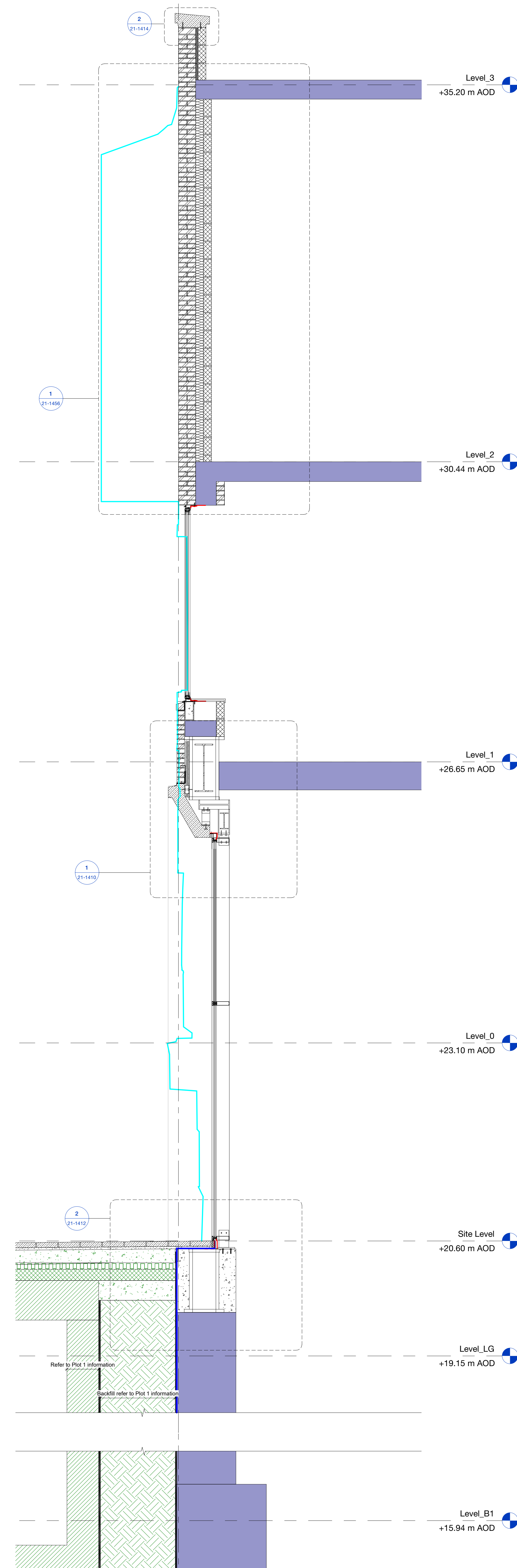
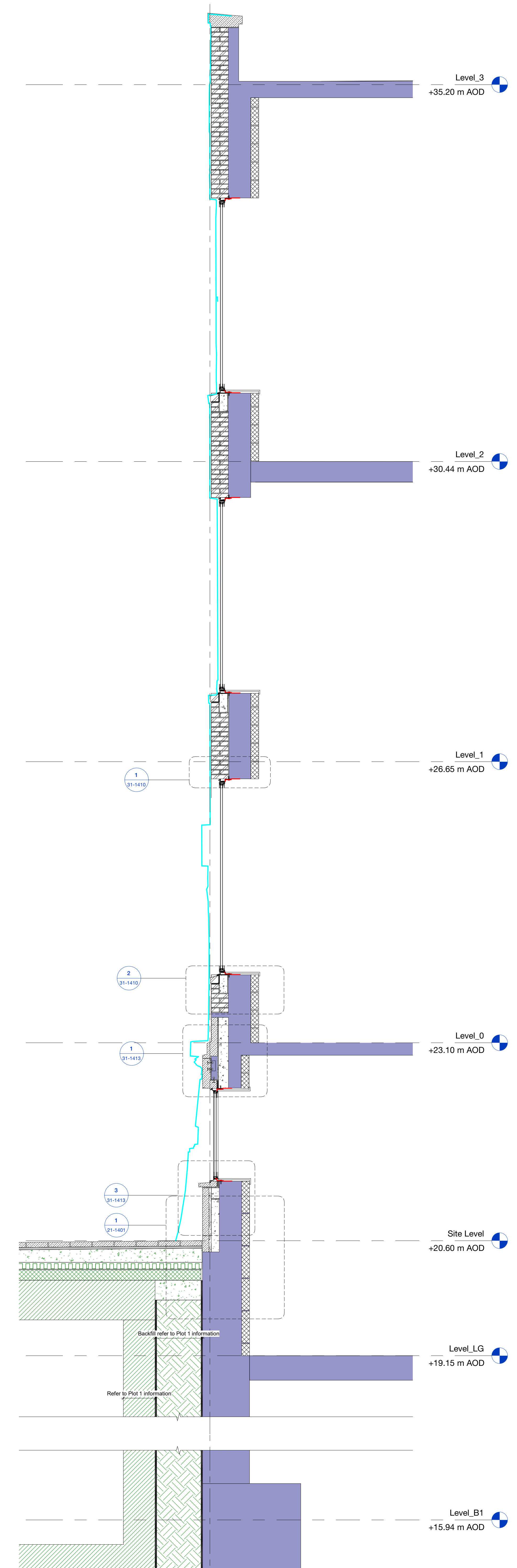


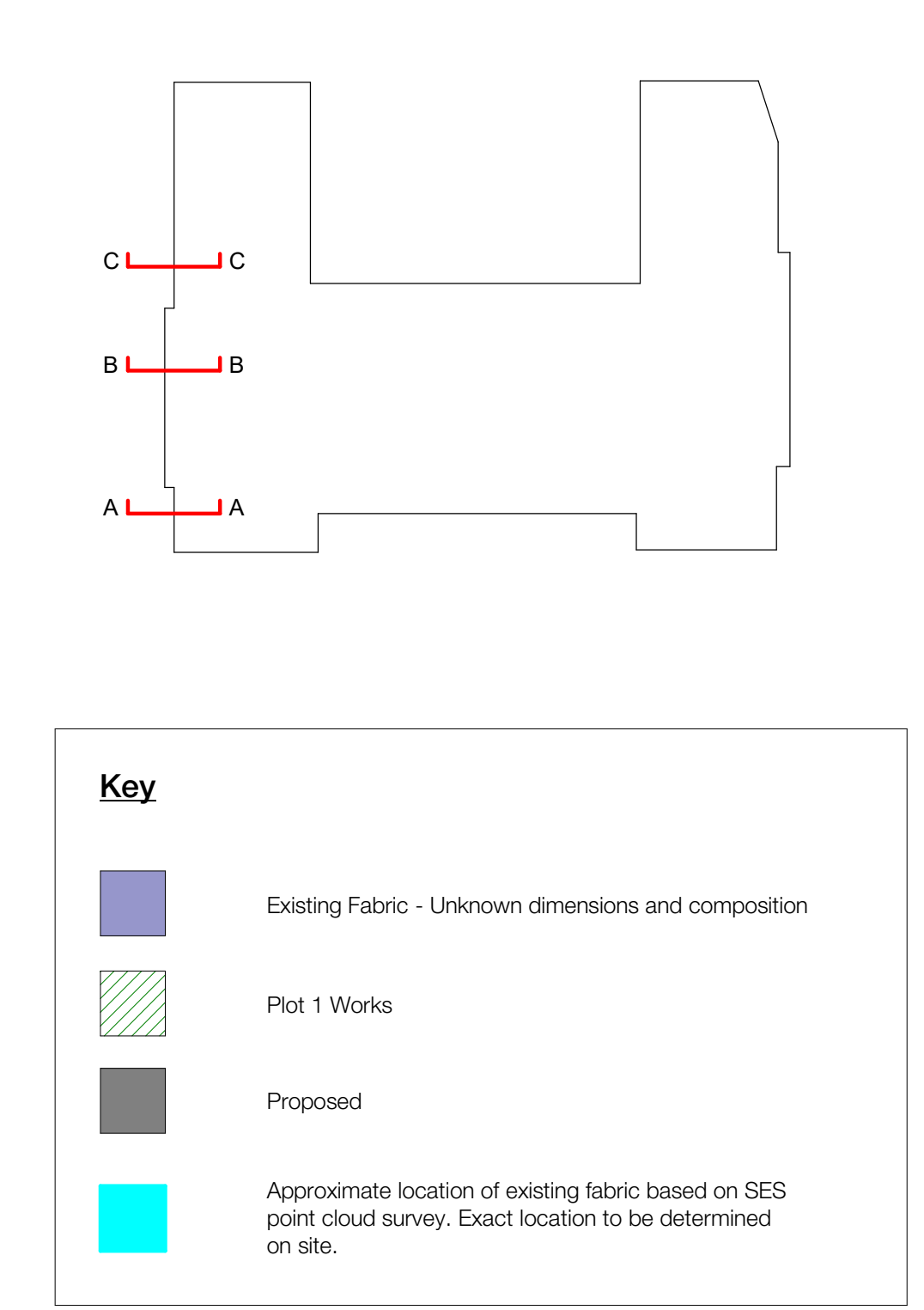
AA Section A-A
1:25



BB Section B-B
1:25



CC Section C-C
1:25



Copyright Hawkins/Brown Architects
No implied licence exists. This drawing should not be used to calculate areas for the purposes of valuation. Do not scale this drawing. All dimensions to be checked on the site by the contractor and such dimensions to be their responsibility. All work must comply with relevant British Standards and Building Regulations requirements. Drawing errors and omissions to be reported to the architect. To be read in conjunction with Architect's specification and other consultant information.

Rev	Stage Of Issue	Description	Date
P01			16.02.24
P02			13.06.24

Note
Design package is based on measured survey data by SES received on 27.03.23 and the visual survey by HBA 'BEMP-HBA-P2-XX-RP-A-00-0001'. The limitations of the visual survey are set out within the report. Current information has been produced in the absence of a condition survey. There is the possibility that hidden issues of the building fabric may require adjustment to this design at a later stage. Designs should be read in conjunction with the heritage reports produced by Alan Baxter Associates.
Repairs and cleaning to heritage brickwork and Portland stone require condition survey and detailed inspection by a cleaning/repair specialist to establish the full scope and methodology of works. Input is required to determine extent of reusable facade materials, including material compatibility between new and old. Specialist subcontractor input is required to fully coordinate designs for curtain walling, windows and reconstructed Portland stone cladding. These inputs may have implications on detailed setting-out and other consultants' designs.
Current information represents design intent appropriate to this work stage and has not benefited from specialist subcontractor inputs noted above. Further co-ordination and technical development will be required following insight provided by others and prior to construction using specialist subcontractors and suppliers.

3C Tariff Street
Manchester M1 2FF
mail@hawkinsbrown.com
hawkinsbrown.com



Project
IoN/DRI Redevelopment Project
256 Grays Inn Road, London,
WC1X 8LD

Drawing
Assembly Sections

Scale @ A0
As indicated

Date
13/06/24

Drawn By
MM

Checked By
JP

Job Number
17056A

Status
S3

Purpose of Issue
For Review & Comment

Drawing No.
BEMP-HBA-P2-ZZ-DR-A-21-1300

Rev
P02