

White double-glazed crittall style steel window.
Spec Ref: L10/310

The diagram illustrates a window unit with the following dimensions and components:

- Overall Dimensions:**
 - Overall Width: 1450
 - Overall Height: 1250
- Internal Dimensions:**
 - Internal Width: 1200
 - Internal Height: 1000
- Offsets (S/O):**
 - Top Offset: 75
 - Bottom Offset: 75
 - Left Offset: 50
 - Right Offset: 50
- Components:**
 - Clear Glazing:** The central transparent area.
 - Frame:** The outer structure surrounding the glazing.
 - Inner Frame:** The inner structure surrounding the glazing.

White double-glazed crittall style steel window.
Spec Ref: L10/310

Technical drawing of a window unit showing dimensions and components. The drawing includes a central rectangular area labeled "Clear Glazing". Surrounding this area are multiple concentric rectangular frames representing the window assembly. Dimensions are indicated by red lines and text:

- Overall width: S/O 2450
- Overall height: S/O 1250
- Inner clear glazing width: 2200
- Inner clear glazing height: 1000
- Frame thickness (multiple layers): 50
- Outer frame thickness: 75

White double-glazed crittall style steel window.
Spec Ref: L10/310

Technical drawing of a double-glazed window with a triangular vent. The drawing shows a vertical window with two panes. The top pane is rectangular and labeled "Clear Glazing". The bottom pane is also rectangular but contains a large triangle formed by dashed lines, also labeled "Clear Glazing". Dimensions are provided in millimeters. The total height is 2575 mm, with a top section of 1073 mm and a bottom section of 953 mm. The total width is 1450 mm. Various offsets of 50 mm are indicated for the frame and glazing layers.

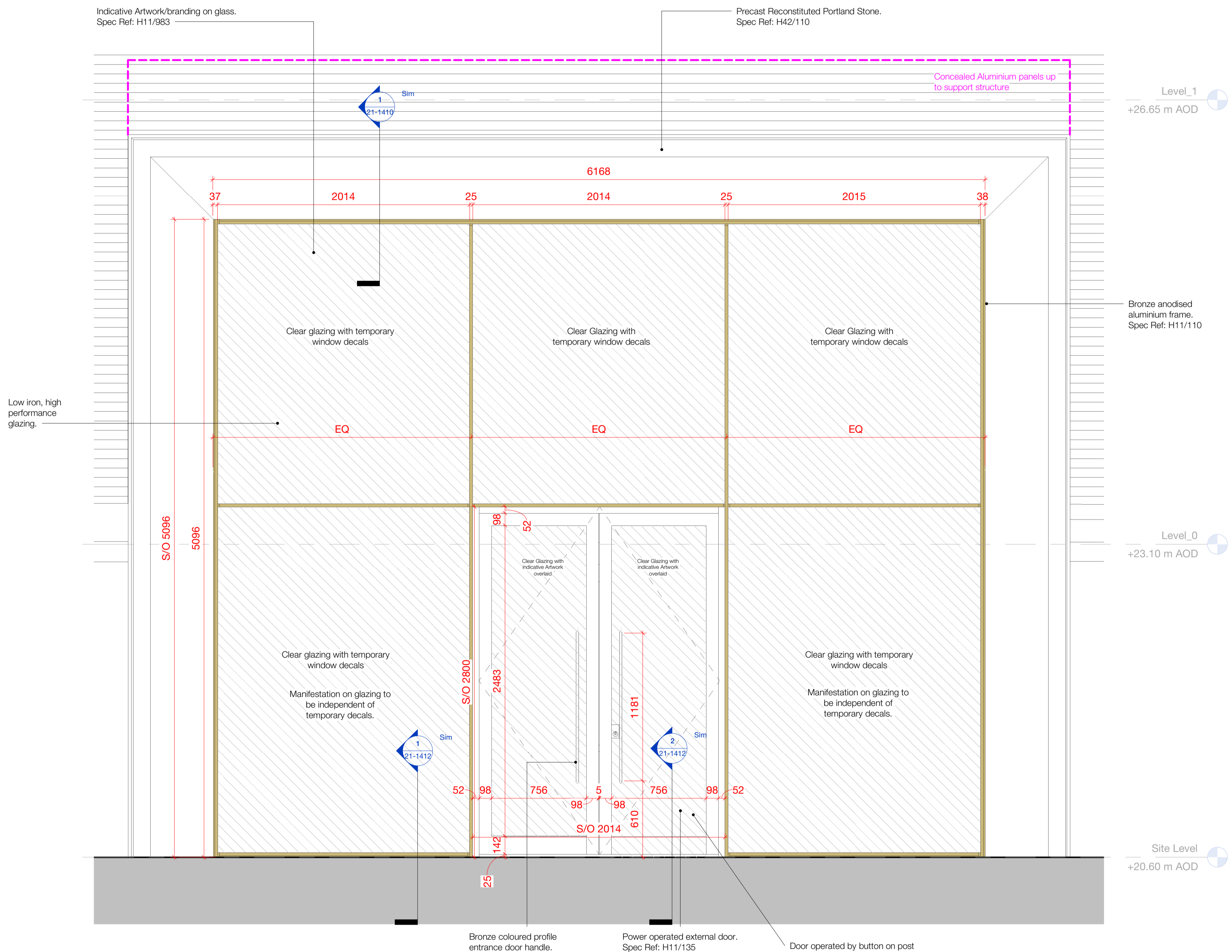
White double-glazed crittall style steel window.
Spec Ref: L10/310

Technical drawing of a three-pane window assembly. The overall dimensions are S/O 4300 (height) and S/O 1440 (width). The assembly consists of three panes, each labeled "Clear Glazing". The top two panes are rectangular, and the bottom pane is triangular. The dimensions are as follows:

- Overall height: S/O 4300
- Overall width: S/O 1440
- Top pane height: 1333
- Second pane height: 1333
- Third pane height: 1233
- Top pane width: 1340
- Second pane width: 1340
- Third pane width: 1340
- Spacers between panes: 50
- Spacer at the top: 50
- Spacer at the bottom: 50
- Spacer on the left: 50
- Spacer on the right: 50

1 : 20

Total Count: 1



1 : 20

Notes:

- For location on plan please refer to drawings 20-1100 and 20-1101
- For further details of the curtain walling, please refer to Spec Ref: H11/110

Rev		Description	Date
P01	Stage 04 Issue		16.02.24
P02	For Review & Comment		13.06.24

Copyright Hawkins\Brown Architects

No implied licence exists. This drawing should not be used to calculate areas for the purposes of valuation. Do not scale this drawing. All dimensions to be checked on the site by the contractor and such dimensions to be their responsibility. All work must comply with relevant British Standards and Building Regulations requirements. Drawing errors and omissions to be reported to the architect. To be read in conjunction with Architect's specification and other consultant information.

Note

Design package is based on measured survey data by SES received on 27.03.23 and the visual survey by HBA 'BEMP-HBA-P2-XX-RP-A-00-0001'. The limitations of the visual survey are set out within the report. Current information has been produced in the absence of a condition survey. There is the possibility that hidden issues of the building fabric may require adjustment to this design at a later stage. Designs should be read in conjunction with the heritage reports produced by Alan Baxter Associates.

Repairs and cleaning to heritage brickwork and Portland stone require condition survey and detailed inspection by a cleaning/repair specialist to establish the full scope and methodology of works. Input is required to determine extent of reusable facade materials, including material compatibility between new and old. Specialist subcontractor input is required to fully coordinate designs for curtain walling, windows and reconstituted Portland stone cladding. These inputs may have implications on detailed setting-out and other consultants' designs.

Current information represents design intent appropriate to this work stage and has not benefited from specialist subcontractor inputs noted above. Further co-ordination and technical development will be required following insight provided by others and prior to construction using specialist subcontractors and suppliers.

Scale @ A1	Date	Job Number	Project
As indicated	13/06/24	17056A	IoN/DRI Redevelopment Project
Drawn By	Checked By	Status	256 Grays Inn Road, London, WC1X 8LD
LZ	JP	S3	
Drawing No.	Rev	Purpose of Issue	Drawing
BEMP-HBA-P2-ZZ-DR-A-31-1400	P02	For Review & Comment	External Window Types - Visual Schedule

159 St John Street
London EC1V 4JQ

mail@hawkinsbrown.com
hawkinsbrown.com

Hawkins\Brown