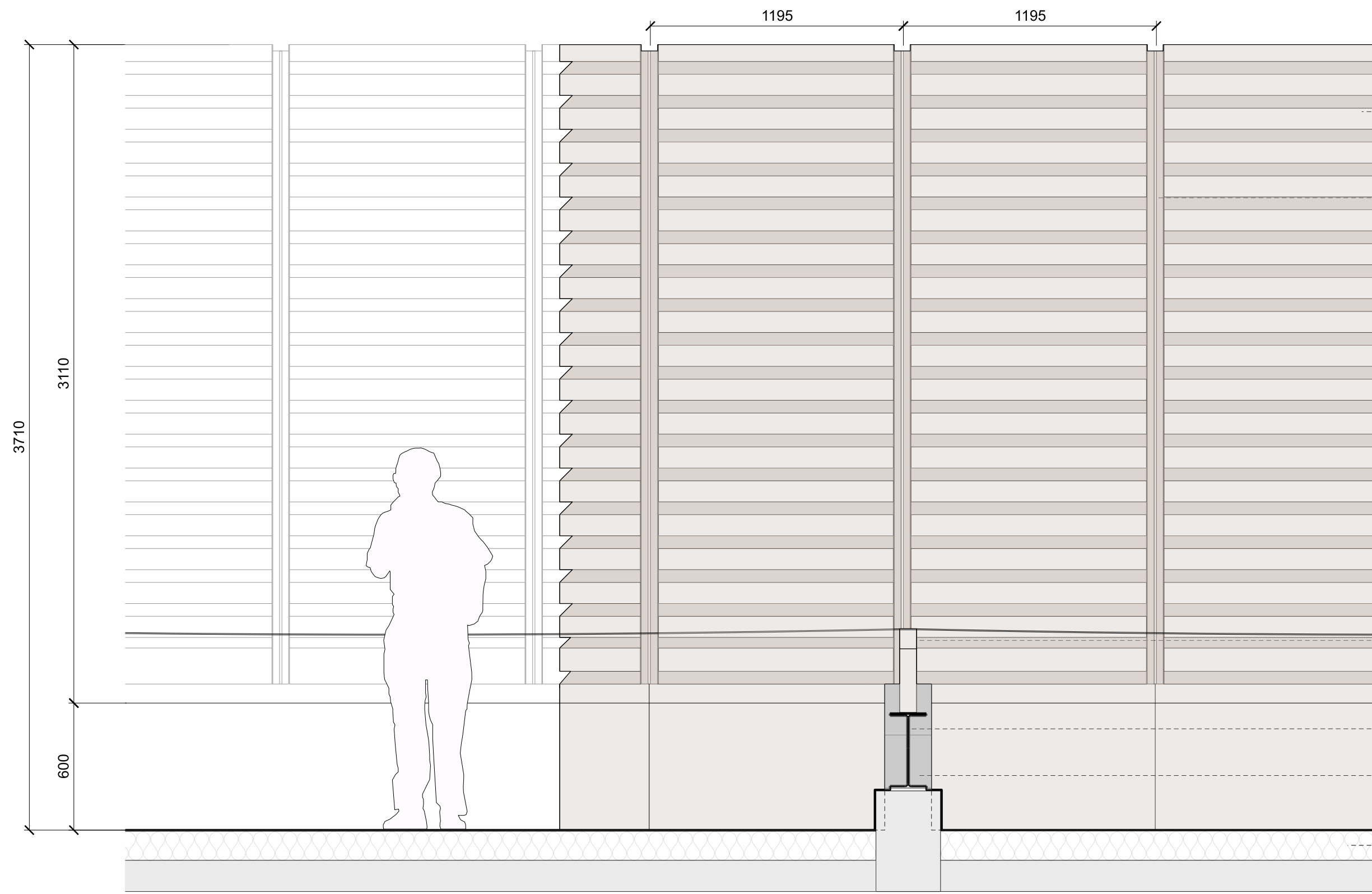
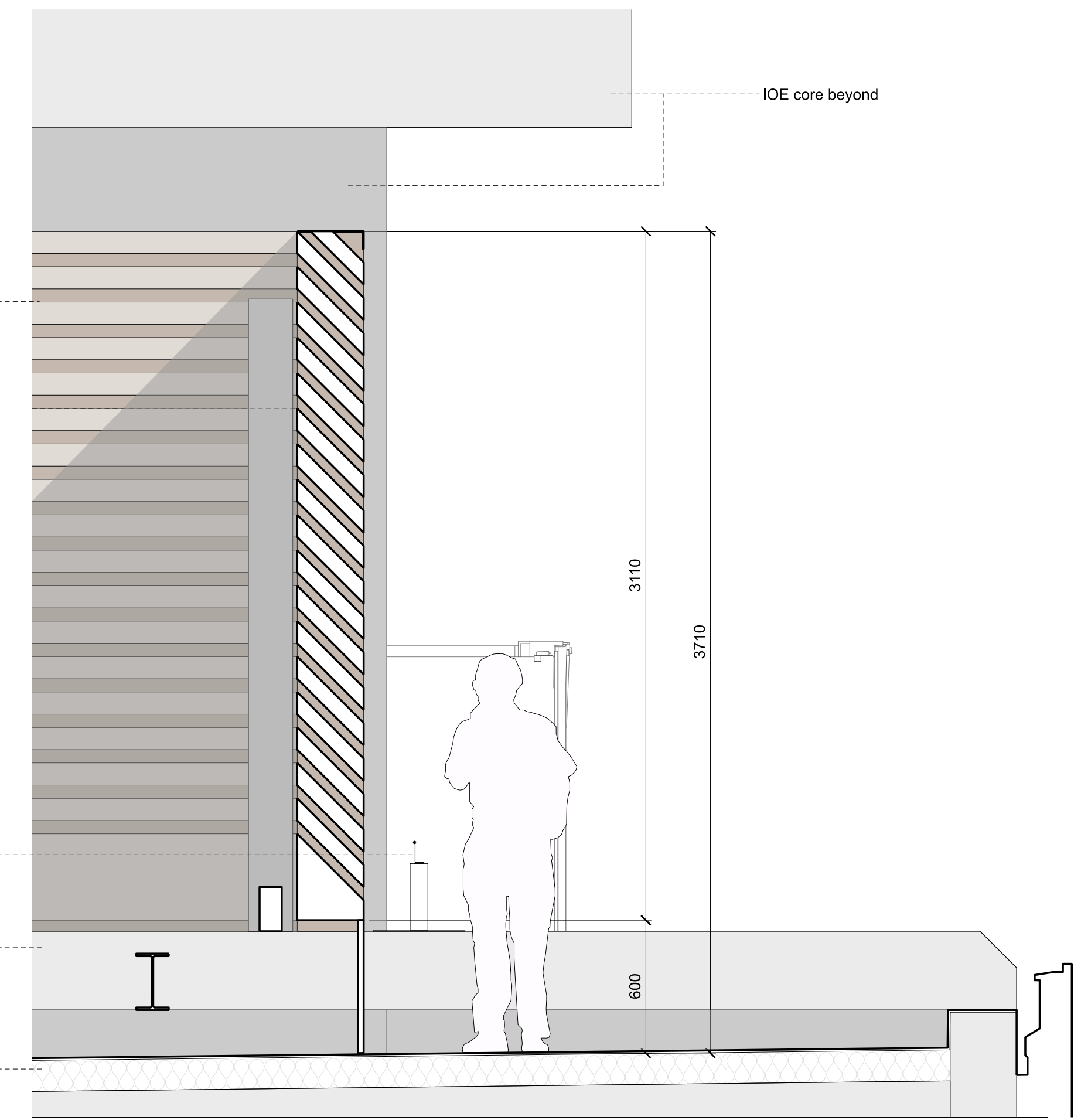


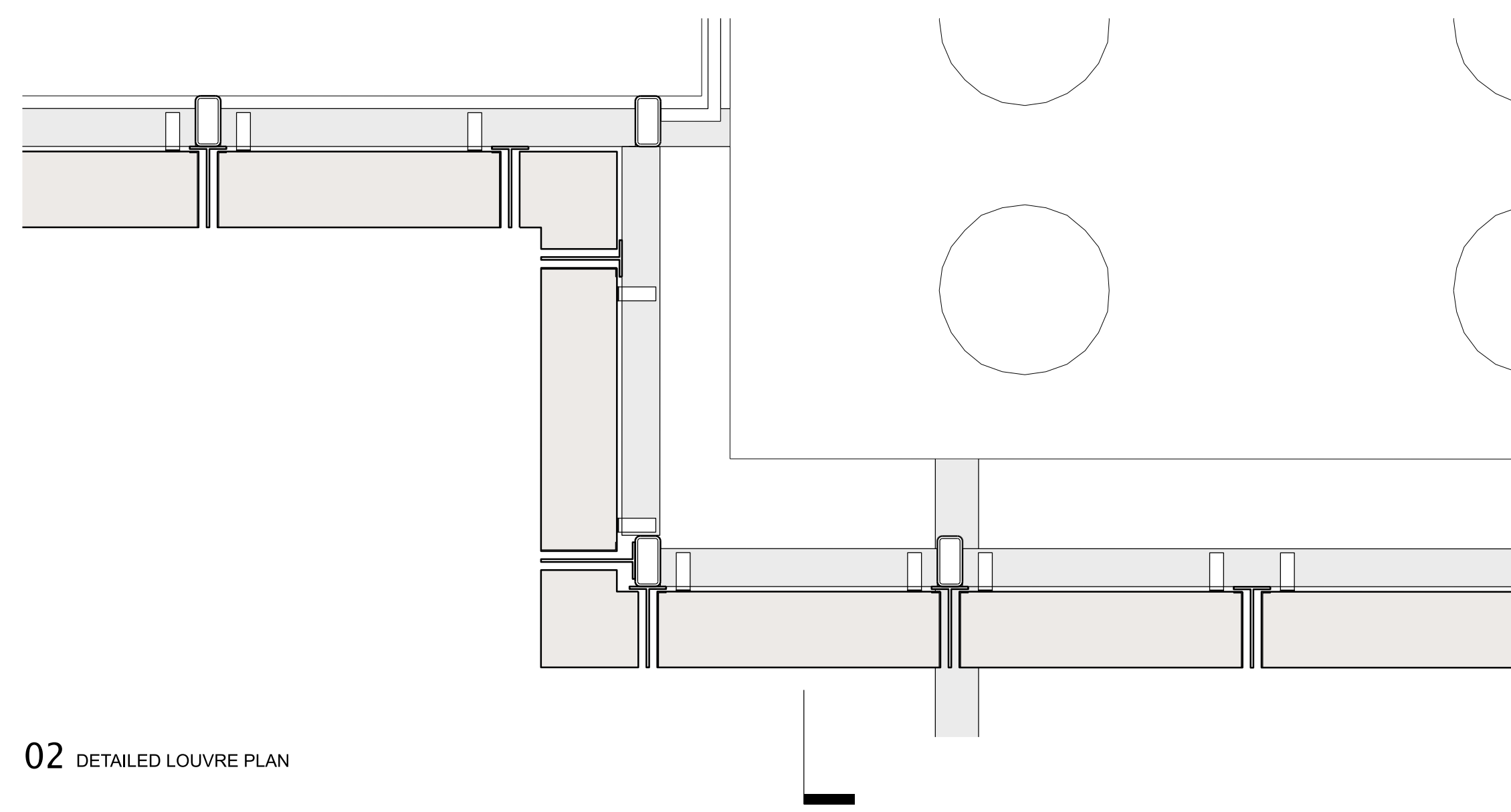
03  
PL500



01 DETAILED EAST ELEVATION



03 DETAILED CROSS SECTION



02 DETAILED LOUVRE PLAN

**notes**

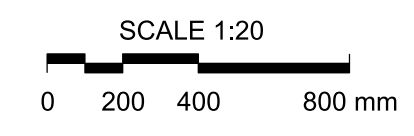
When this drawing is issued in uncontrolled CAD format it will be accompanied by a PDF version and is issued to enable the recipient to prepare their own documents / models / drawings for which they are solely responsible.

The recipient should report all drawing errors, omissions and discrepancies to the architect. All dimensions should be checked on site by the contractor and such dimensions shall be the contractor's responsibility.

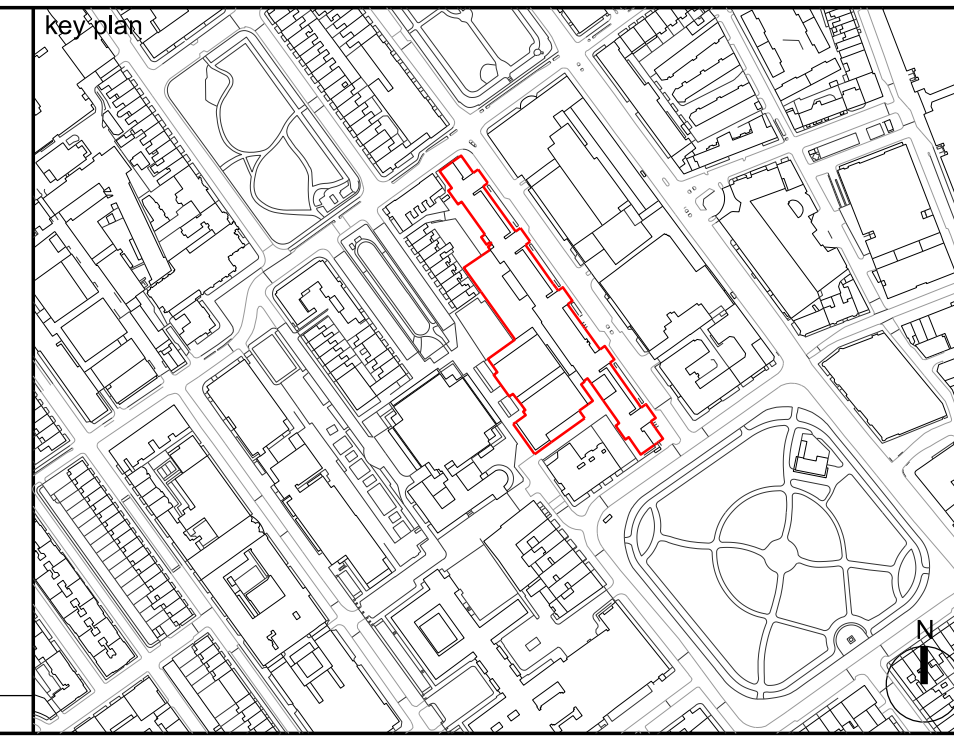
Allford Hall Monaghan Morris Limited accepts no responsibility or liability for:  
 - Any use of this drawing by parties other than the party for whom it was prepared or for purposes other than those for which it was prepared  
 - Any alterations or additions to or discrepancies arising out of changes to the background information on which the drawings are based that was current at the time of issue, and which occur to that information after it has been issued by AHMM  
 - Any loss or degradation of the information held in this drawing resulting from the translation from the original file format to any other file format or from the recipient's reading of it in any other programme or any version of the programme other than that which was used to prepare it  
 - The accuracy of survey information provided by others or for any costs, claims, proceedings and expenses arising out of reliance on such information  
 Any scaling from this drawing other than by the local planning authority solely for the purposes of the planning application to which it relates

The drawing shows the general arrangement together with the nominal sizes of selected elements and components. The information shown indicates the design intent of the architect and is to be read in conjunction with the performance specification. The Contractor must include for all design development and coordination required to complete the works.

- 1 Steel louvred acoustic enclosure, PPC finish to match the existing bronze-coloured curtain walling
  - 2 Steel pressing forming T-sections between louvred panels at 1195mm centres, Expressed module along upper edge of louvred panels, PPC-coated steel to match the existing bronze-coloured curtain walling
  - 3 Mansafe system for roof access outside plant enclosure
  - 4 Primary beams supported by new plinths
  - 5 New plinths
  - 6 Secondary beams supporting acoustic enclosure and plant equipment
- Potential new roof build-up on existing screed laid to falls



P00	PL	26/07/24	FOR PLANNING
Rev	Status	Date	Description



**ALLFORD HALL MONAGHAN MORRIS**  
 ARCHITECTS Ltd.  
 MORELANDS, 5-23 OLD STREET LONDON EC1V 9HL  
 TEL 020 7251 5261 FAX 020 7251 5123 WEB WWW.AHMM.CO.UK

client  
**BLOOMSBURY HEAT & POWER II LTD**

project name  
**BHPN\_UOL DECARB**

drawing title  
**PROPOSED DETAILED BAY STUDY**

drawn	checked	scale	wp	stage	status	revision
ZY	SS	1:20 @ A1		2	PL	P00
project	originator	volume	level	type	role	drawing no.
23081	AHMM	XX	XX	DR	A	PL500

Allford Hall Monaghan Morris Limited