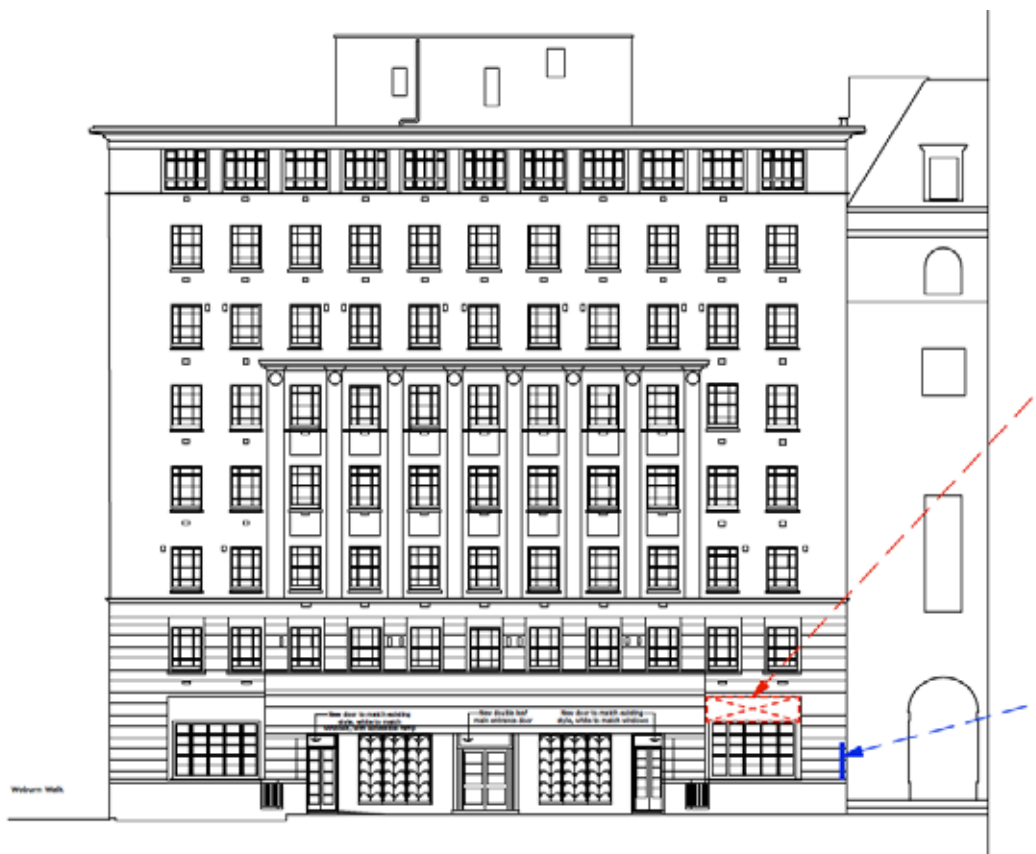


Design and Access Statement

County Hotel, Upper Woburn Place, WC1H 0JW



Design and Access

The proposals made are considered with a view to balancing the Caffè Nero brand requirements and the existing appearance of the building and the Bloomsbury Conservation Area, no items of historic interest will be affected by the proposals

The proposal complies with Building Regulations, with level access and appropriate services on the ground floor. A disabled persons WC is provided. The proposed access arrangement allows the building to have the flexibility to meet future changing needs. Furniture such as tables and seating is noted not to be fixed thus allowing rearrangement to meet the needs of all sections of the community.

Caffè Nero's philosophy is really very simple and strives for excellence in all areas in order to achieve their aim. Their aim is to be part of and integrate into the local environment and culture.

A Caffè Nero is a place where customers can grab a coffee or snack while feeling assured and comfortable with a well known recognisable brand.

Appearance:

The proposals for the shopfront signage, decoration and the interior have a mixture of traditional and modern design elements and will in our opinion enhance the properties appearance and sit well within the conservation areas street scene.

Landscaping will remain unaltered

Access from the highway will remain unchanged

