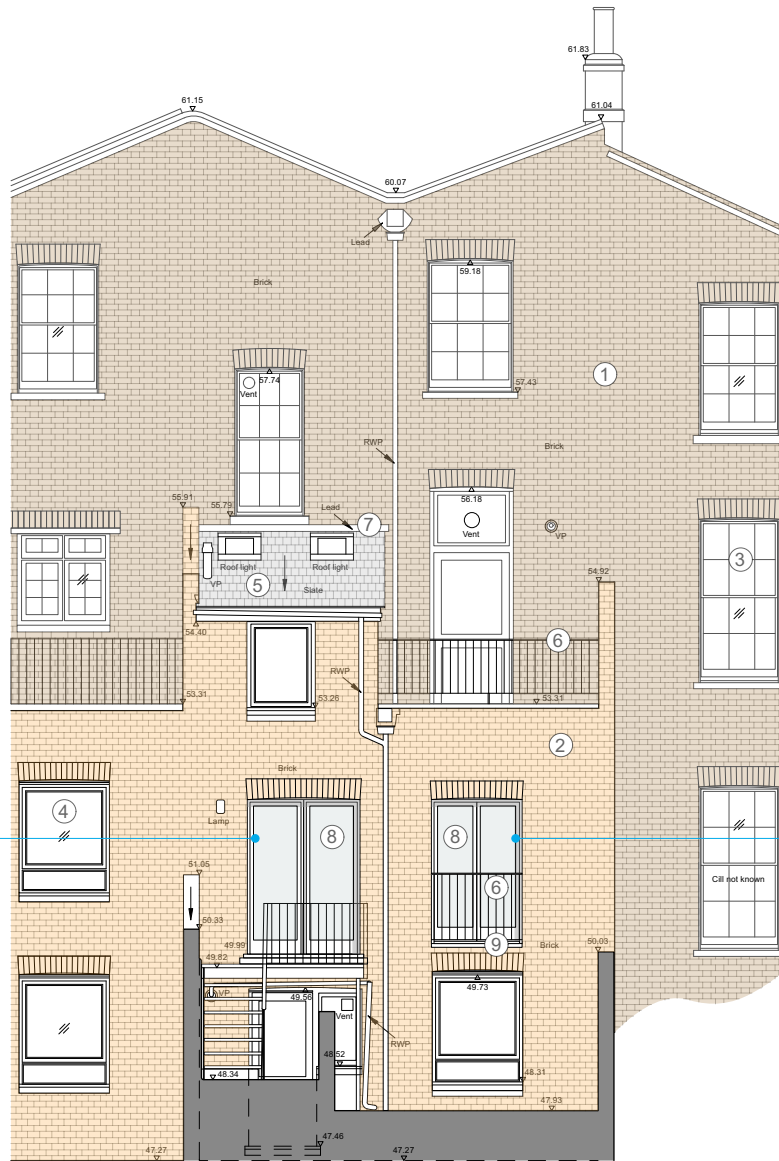


**For construction purposes:**

- Do not scale this drawing.
- All dimensions and levels to be checked on site.
- Discrepancies to be reported to Miltiadou Cook Mitzman architects before proceeding.
- If in any doubt about information on this drawing contact Miltiadou Cook Mitzman architects.

REVISION NUMBER	DATE	BY	NOTES
P	03/11/2023	ME	Planning set
P2	05/03/2024	ME	Issued for planning
P3	30/07/2024	ME	Issue for planning amendment to conditions

	Original fabric
	Modern extension



Proposed double doors with projecting cill of same material as existing lintel

Proposed double doors with projecting cill of same material as existing lintel

**1** Consented West (Rear) Elevation  
1:100

**Proposed Materials:**

1. Original London stock bricks (flemish bond)
2. New bricks (stretcher bond)
3. Painted timber sash windows
4. Modern casement windows
5. Slate roof tiles
6. Metal balustrades
7. Lead flashing
8. Modern timber double glazed doors
9. Metal mesh juliet balcony



Proposed double doors with projecting cill of same material as existing lintel

Proposed windows with projecting cill of same material as existing lintel.

**2** Proposed West (Rear) Elevation  
1:100

**Proposed Materials:**

1. Original London stock bricks (flemish bond)
2. New bricks (stretcher bond)
3. Painted timber sash windows
4. Modern casement windows
5. Slate roof tiles
6. Metal balustrades
7. Lead flashing
8. Modern timber double glazed doors
9. Modern timber double glazed windows