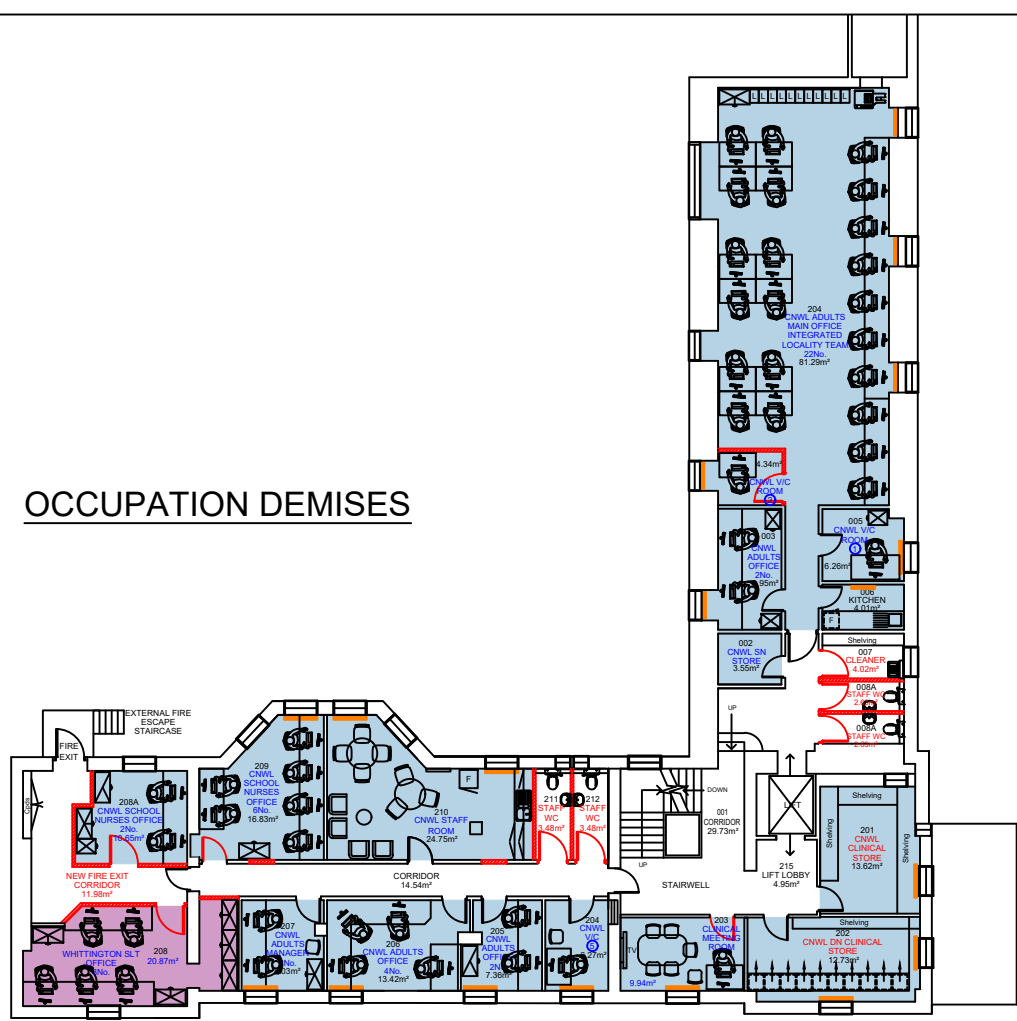


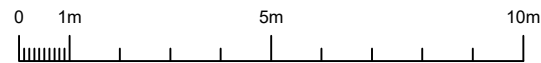
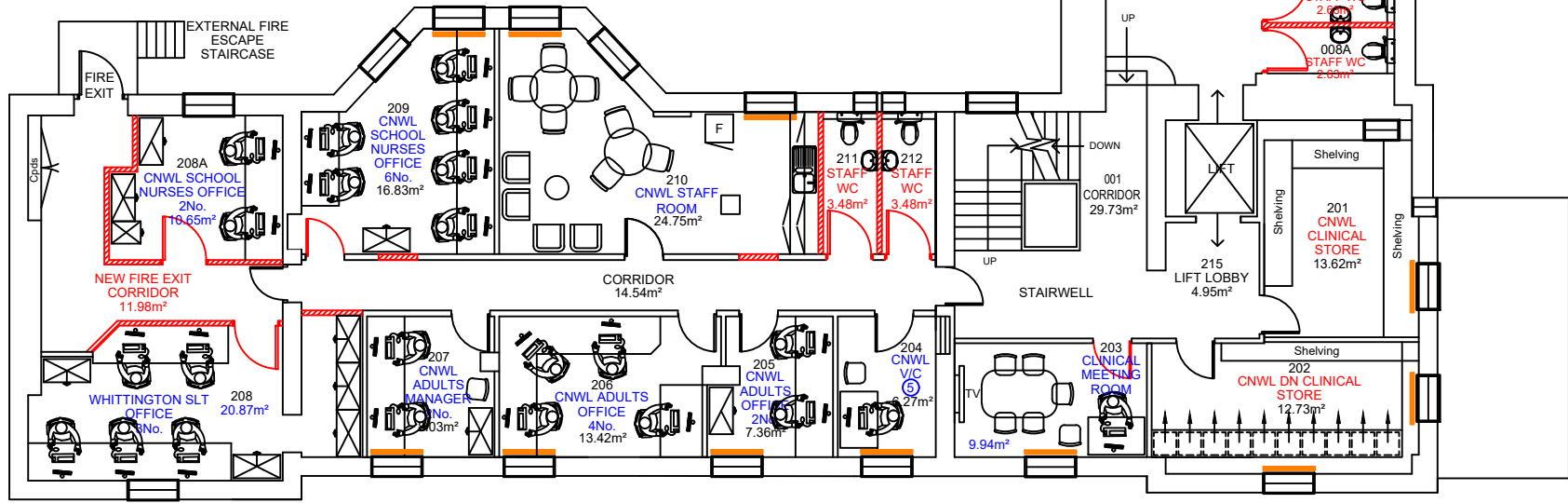
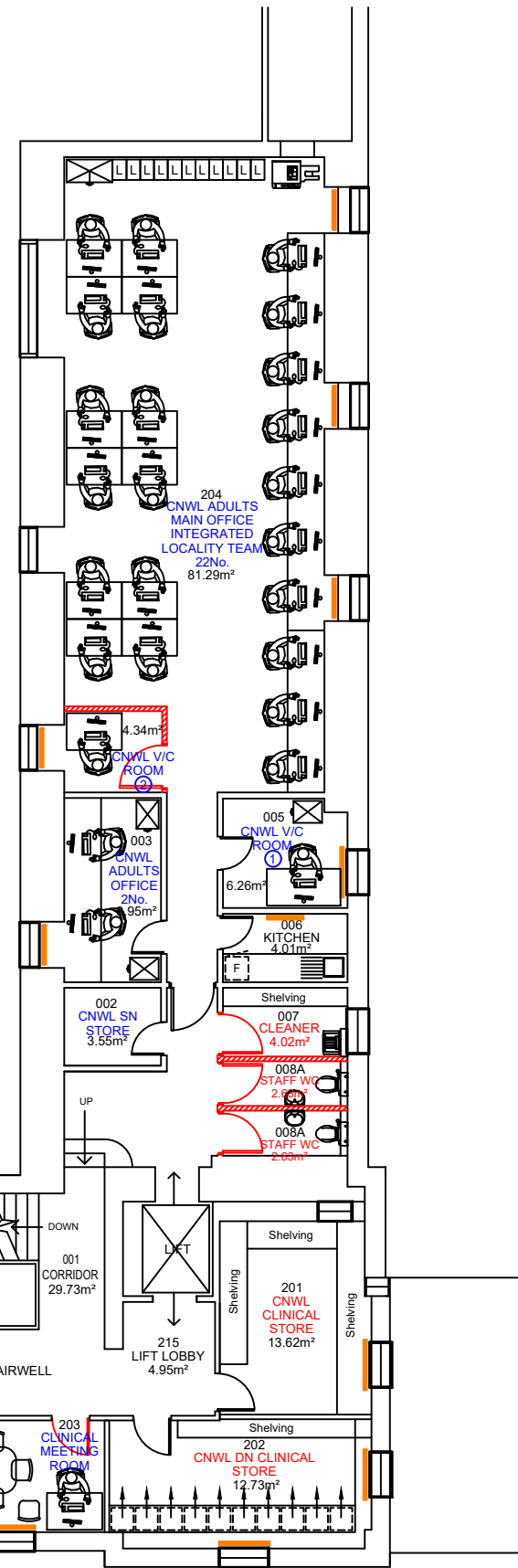
OCCUPATION DEMISES



LEGEND:

- BLOOMSBURY GP PRACTICE
- GP-B PRACTICE
- GP A & GP B SHARED
- CNWL
- WHITTINGTON SLT
- WHITTINGTON DENTAL
- CAMDEN & ISLINGTON NHS TRUST
- THE LISTENING PLACE
- VACANT
- UCLH PHLEBOTOMY

SECOND FLOOR 2nd



Scaler Bar

All dimensions to be verified on site by Main Contractor before the start of any shop drawings or work whatsoever either on their own behalf or that of sub-contractors.
Report any discrepancies to the Contract Administrator at once.
This drawing is to be read with all relevant Architect's and Engineer's drawings and other relevant information.
© Ingleton Wood LLP

LEGEND: DO NOT SCALE

2nd

Option 4

NHS
North Central London
Integrated Care Board

Central and North West London
NHS Foundation Trust

Revision	Date	Description	Drawn	Checked
K	13.05.24	Drawing revised	LAR	TP
J	22.04.24	Updated following RE/PB (GD)/TP site visit on 17.04.24	LAR	TP
H	02.04.24	SN Office layout revised following email feedback from CG on 01.04.24	LAR	TP
G	25.03.24	Updated following Teams Meeting with CNWL Clinical Teams/RE/TP on 18.03.24 & SLT email on 18.03.24	LAR	TP
F	11.03.24	Updated following RE (CNWL) & TP Teams Meeting on 05.03.24	LAR	TP
E	05.03.24	Legend updated	LAR	TP
D	20.02.24	Corridor door to rear Second Floor main office reinstated	LAR	TP
C	05.02.24	Legend updated	LAR	TP
B	19.06.23	Updated following site visit with MM on 09.06.23	LAR	TP
A	05.07.22	Updated following CNWL feedback from JPL	LAR	TP

Ingleton Wood
Vision, form and function

London
Billerica
Cambridge
Colchester
Norwich
Oxford

London
10-12 Aisle Street
London E1 8DE
1:020 7680 4400

www.ingletonwood.co.uk

Project:
HUNTER STREET HEALTH CENTRE
HUNTER STREET

Drawing Title:
PROPOSED SECOND FLOOR PLAN
OPTION FOUR

Client:
NHS PROPERTY SERVICES LTD / CAMDEN CCG

Drawn	Checked	Date	Scale	Paper Size
LAR	TP	25.05.21	1:150	A3

Job No.	Dwg No.	Stage	Revision
812679	44		K