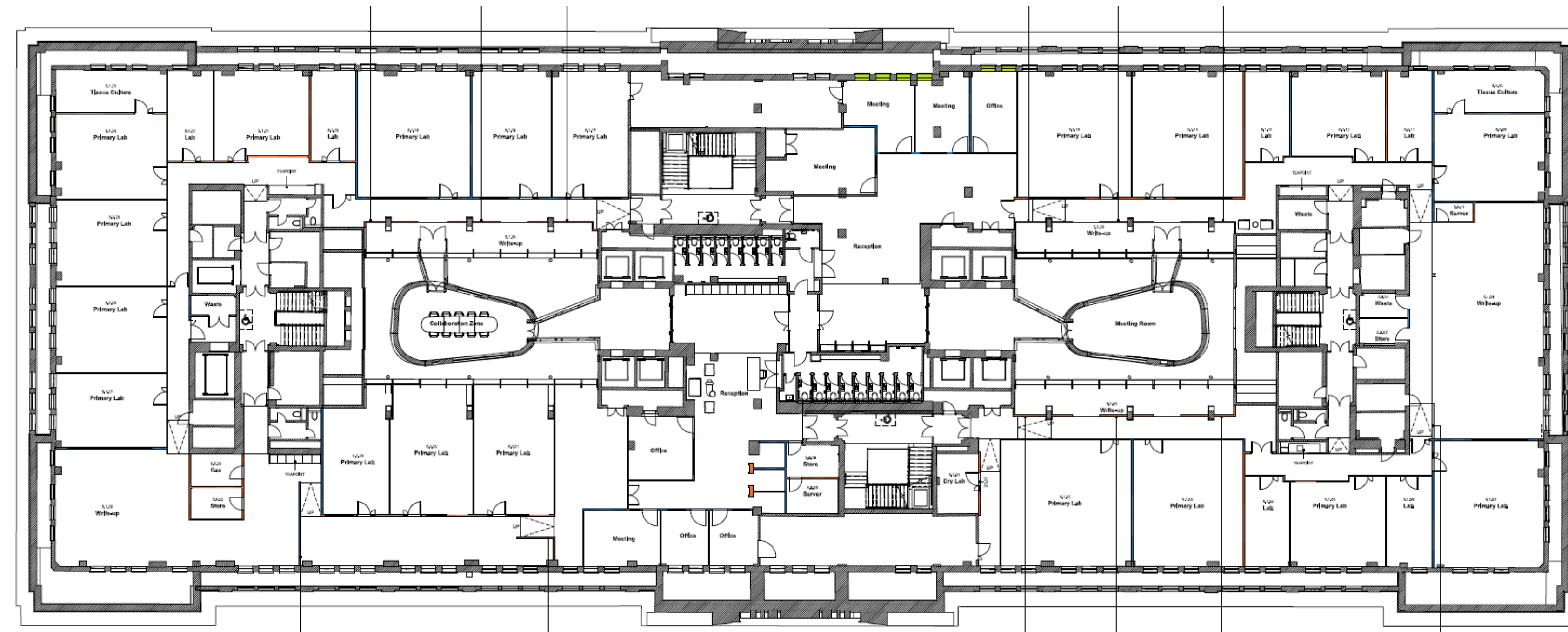
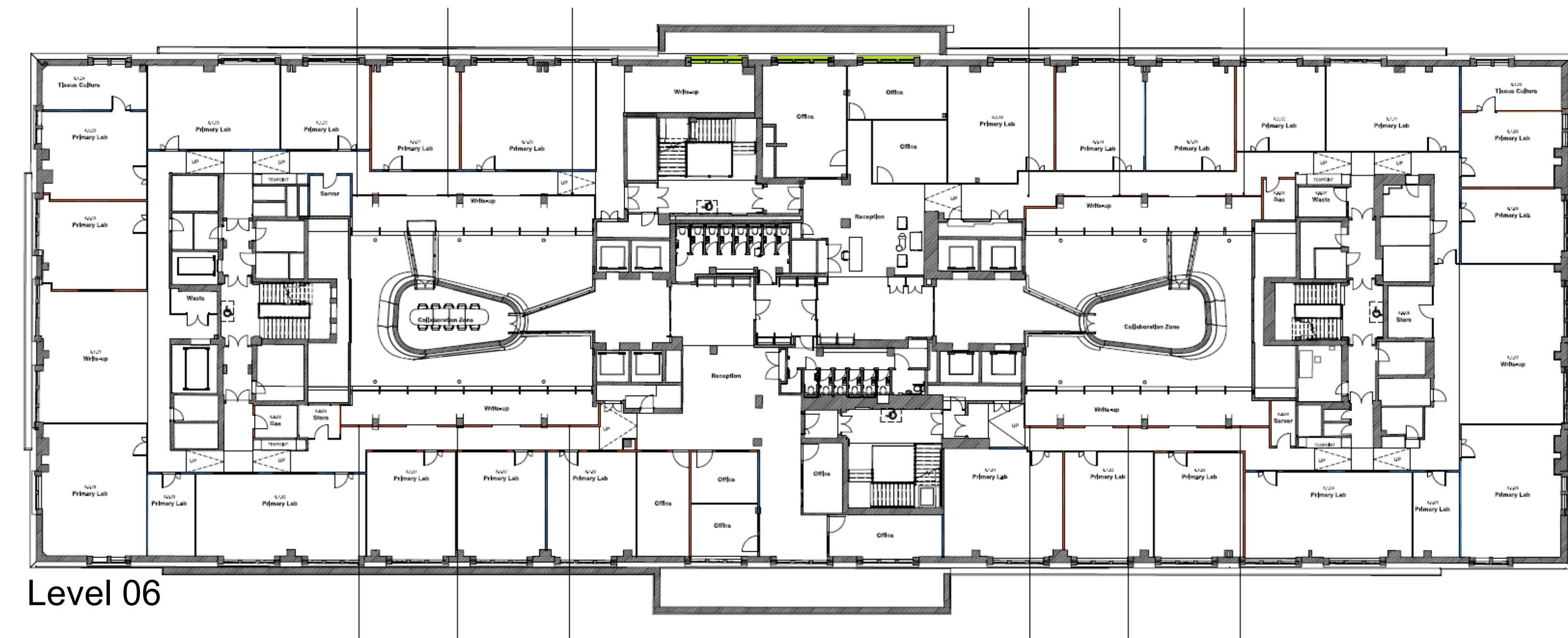


Level 01



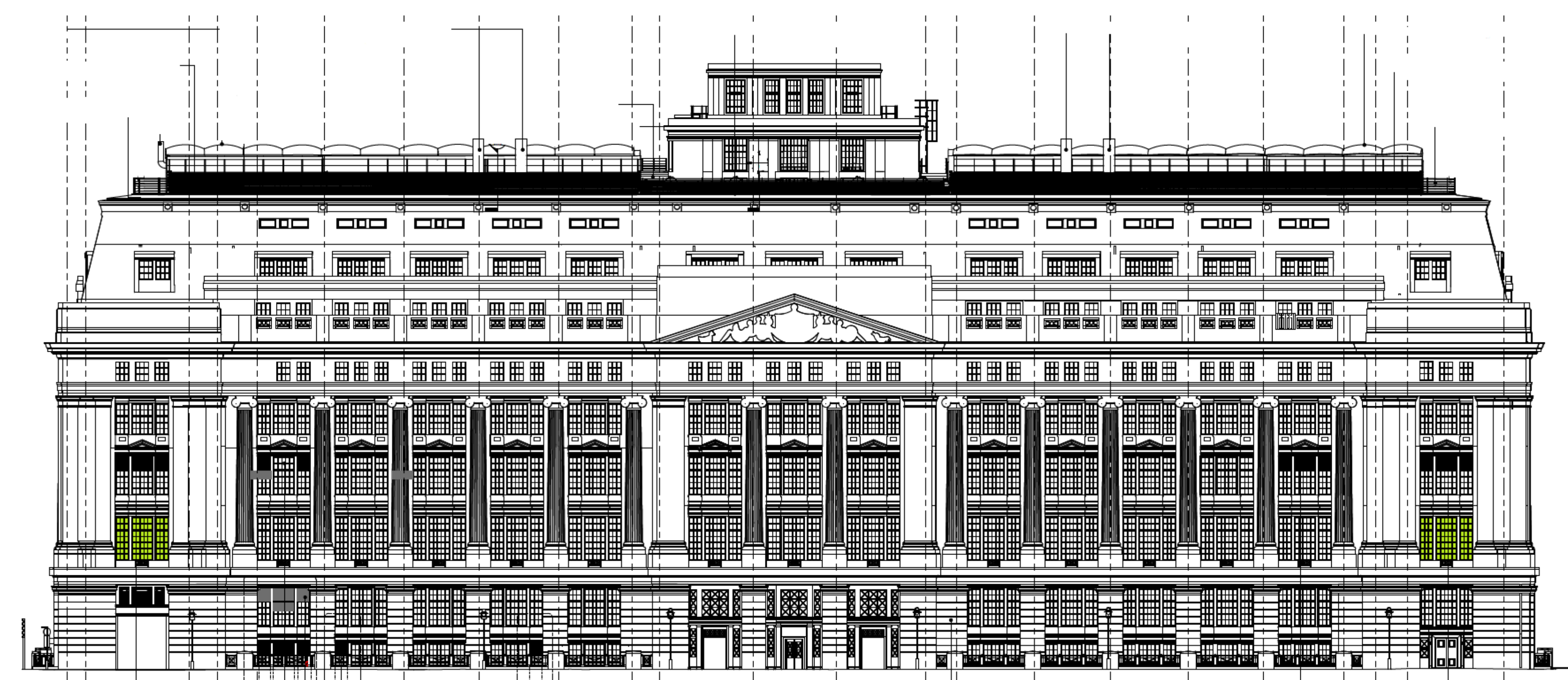
Level 05



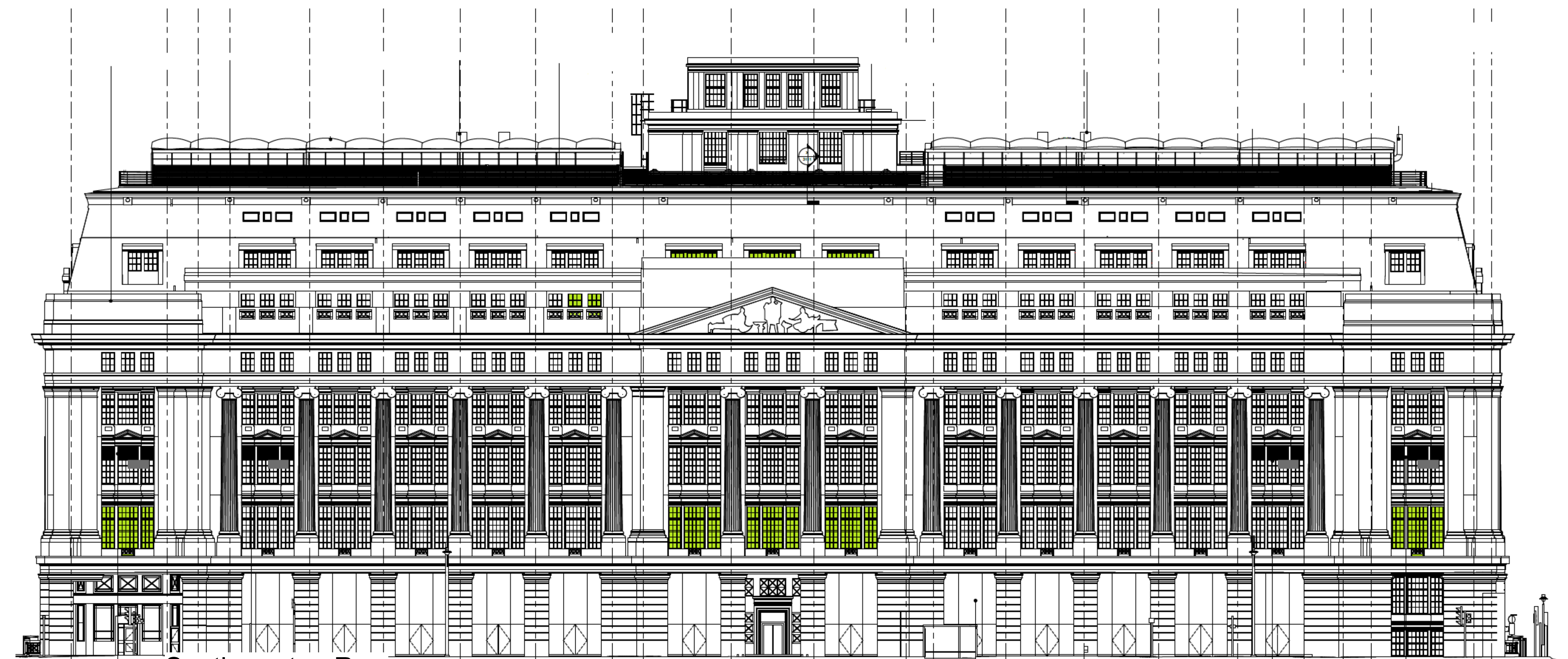
Level 06



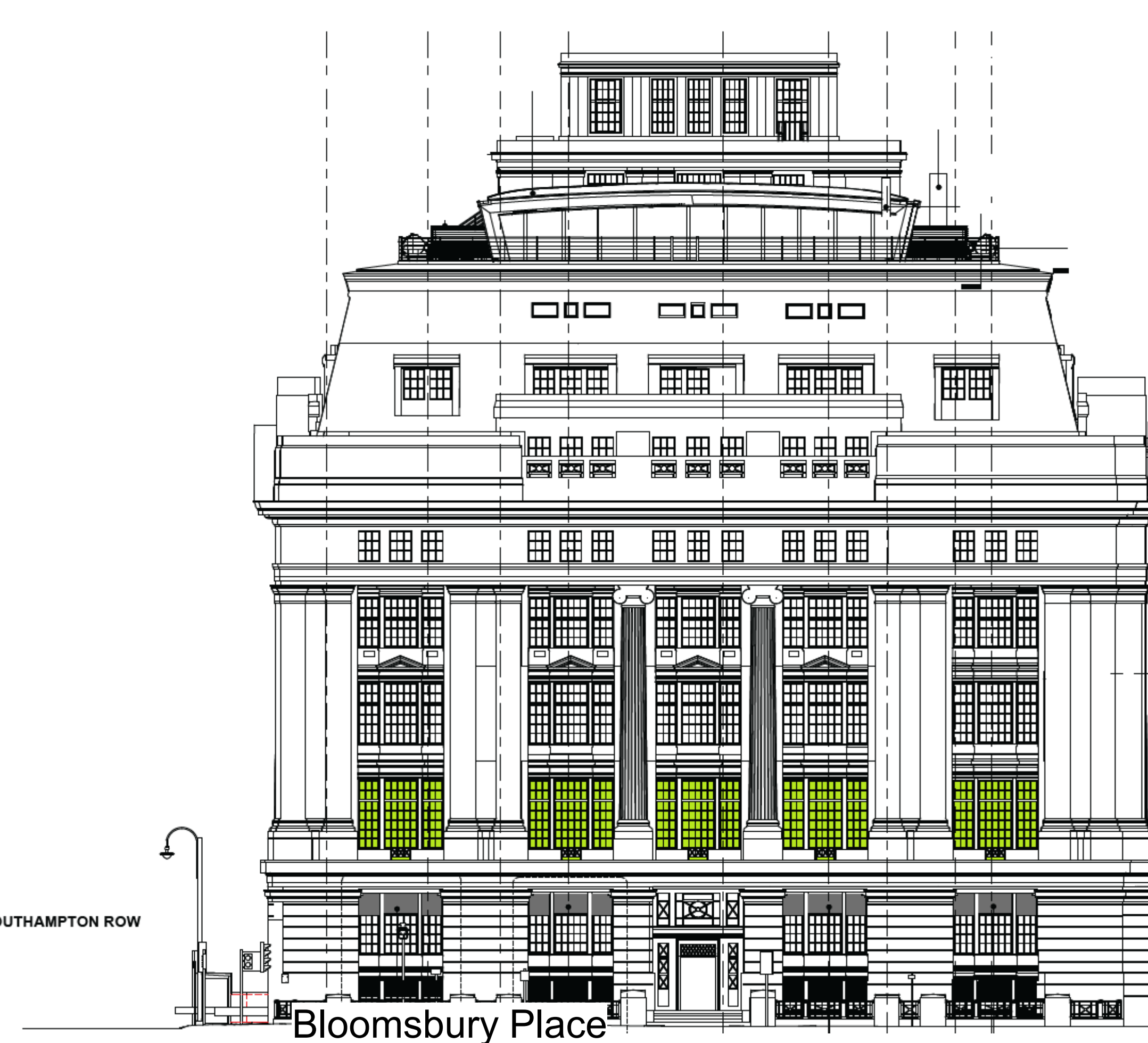
Selectagaze secondary glazing - Typical Installation



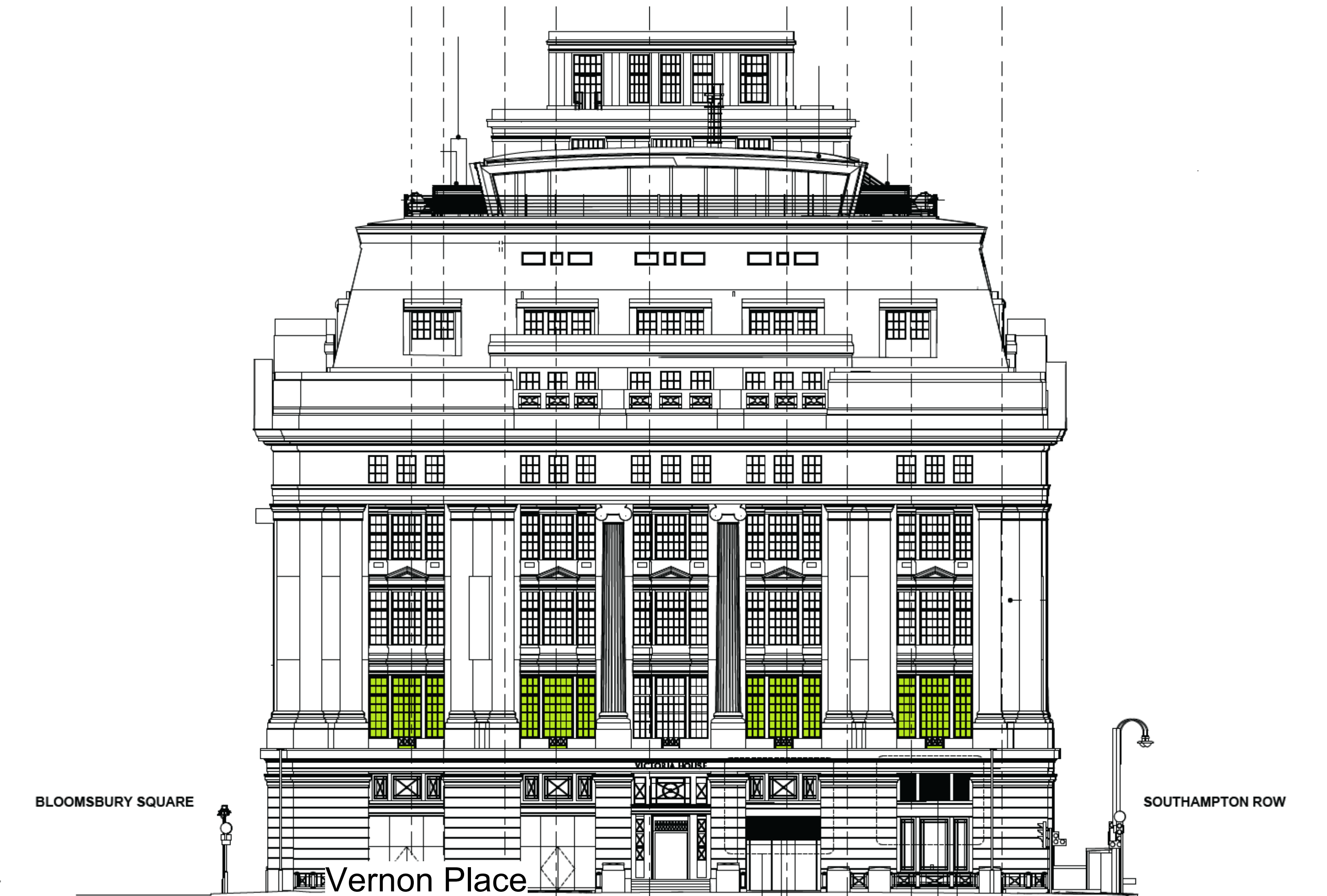
Bloomsbury Square



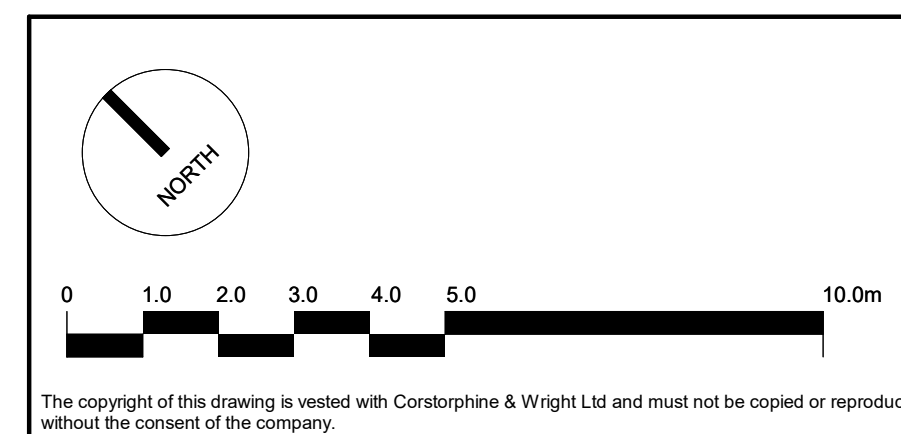
Southampton Row




Bloomsbury Place



Vernon Place



30.05.2024 DL ML  
 08.05.2024 DL ML  
 28.03.2024 DL ML  
 Date Drawn/Checked

  $R_w$  32 dB /  $R_w$  + Ctr 29 dB  
 6 mm toughened secondary glazing  
 Installed over  $\geq$  50 mm void to  
 historic glazing

Client: Oxford Victoria House Ltd.  
 Project: Victoria House  
 Drawing Title: Secondary Glazing to Perimeter Windows  
 Status: PLANNING

London Studio  
 21-27 Lark's Court Street, Hilson, London, WC1N 3NE  
 020 7444 9020  
 corstorphine-wright.com

VTH-CWA-ZZ-ZZ-DR-A-0491  
 Drawing No. S4 P-02  
 Date: 20/03/2024

Corstorphine & Wright