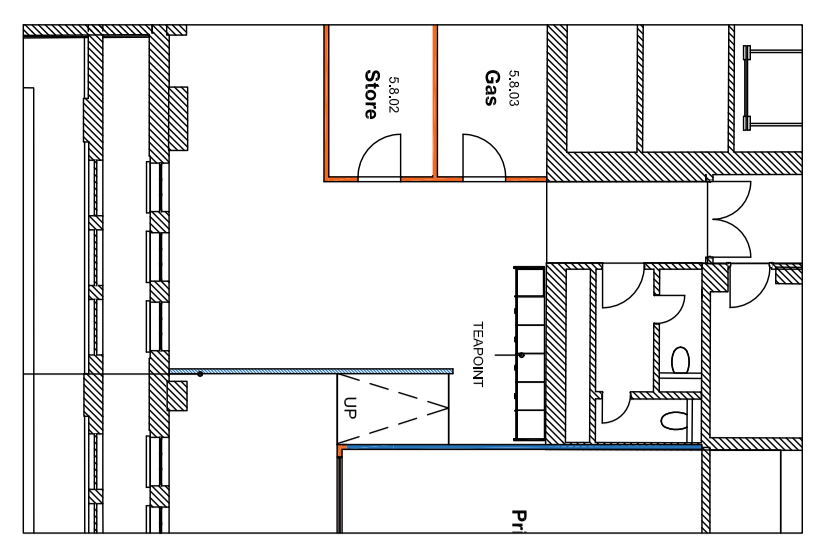


**KEY**  
 Blue = Fit out wall in the a previously approved location.  
 Orange = Fit out wall in the a new location to be approved.



0 1.0 2.0 3.0 4.0 5.0 6.0 7.0 8.0 9.0 10.0  
 METERS  
 The copyright of this drawing is retained with Corstorphine & Wright Ltd and shall not be copied or reproduced without the written consent of the company.

Client: Victoria House Ltd.  
 Project: Victoria House - Fit Out  
 Part: L1, L5 & L6  
 Fit Out Plan  
 GA Proposed - Fifth Floor  
 Date: 20/05/2024  
 Scale: 1:100  
 Drawing No: 21593-CWA-P4-05-ORA-2111  
 Drawing Name: S2\_P01  
 Drawing Date: 20/05/2024

**Corstorphine & Wright**  
 Architects  
 207-211 Finch Street, London, W1C 2NU  
 020 7493 8800  
 corstorphine@cwright.com  
 www.corstorphine.com