

6390mm x 850mm externally illuminated aluminium fascia sign fabricated from 2mm thick aluminium with 40mm returns with welded, and finished corners, spray finished White RAL 9010 satin, complete with applied computer cut vinyl graphics. The external illumination with be a 6390mm long LED trough light with associated brackets all finished White RAL 9010 satin



Store name: 106 Fleet Road,  
NW32QX proposed signage

Scale: 1:30

Version: 1

Date: 01-05-2024

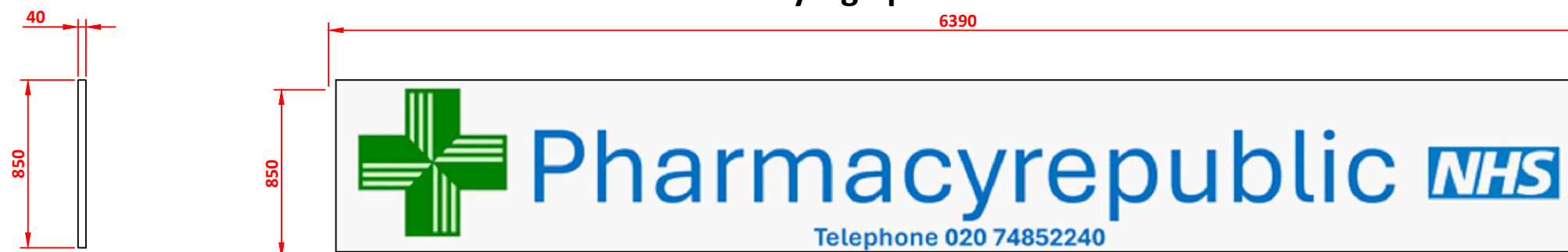
Drawn by: AF

Sheet: 1 of 1

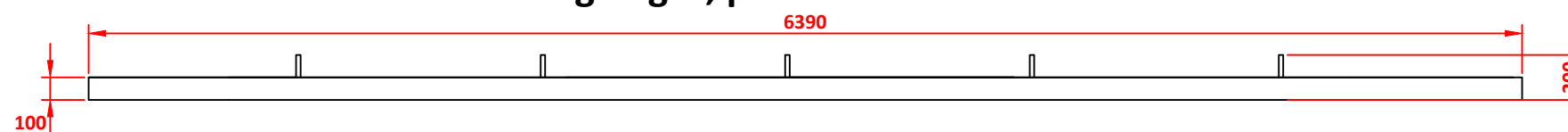
Revision notes:



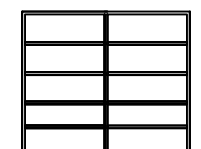
Aluminium tray sign powder coated in white



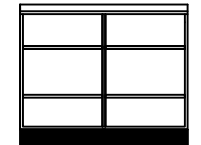
Illuminated trough light, powder coated in white



D1 above bench unit  
4700 linear meters



D2 below bench unit  
2820 linear meters



D3 full height unit  
10,300 linear meters

