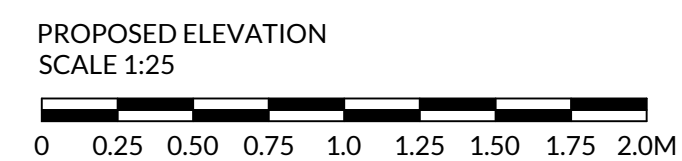


NEW GLAZED
DISABLED ENTRANCE
WITHIN EX SHOP FRONT
WITH DDA RAMP.

— MC TO ENSURE APPROPRIATE DRAINAGE INSTALLED TO PREVENT WATER ACCUMULATION ON RAMP



JOB NO 1453	DWG NO 513	REV /
-----------------------	----------------------	-----------------