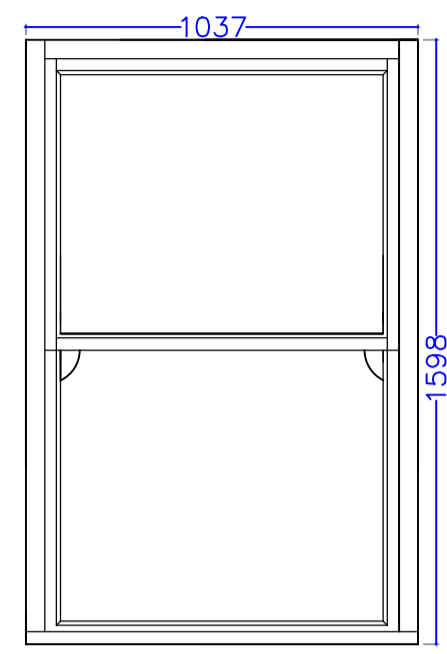
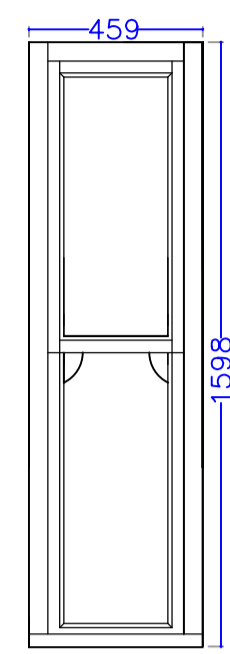


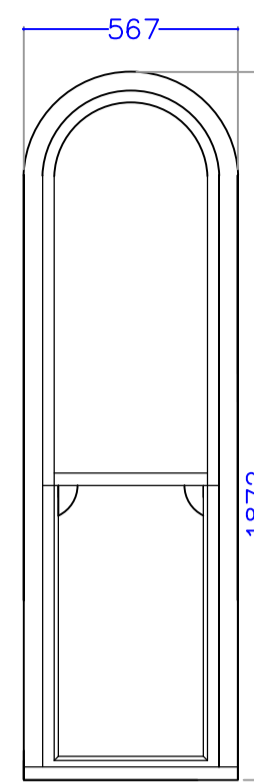
Timber Top Hung sliding sash:
W1-27, W40-43, W46-47, W50-83,
W94, W97-117 1:20 Scale



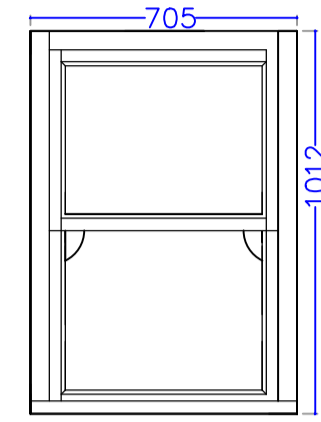
Timber Top Hung sliding sash:
W28-29, W30-39, W44-45,
W48-49, W84-92 1:20 Scale



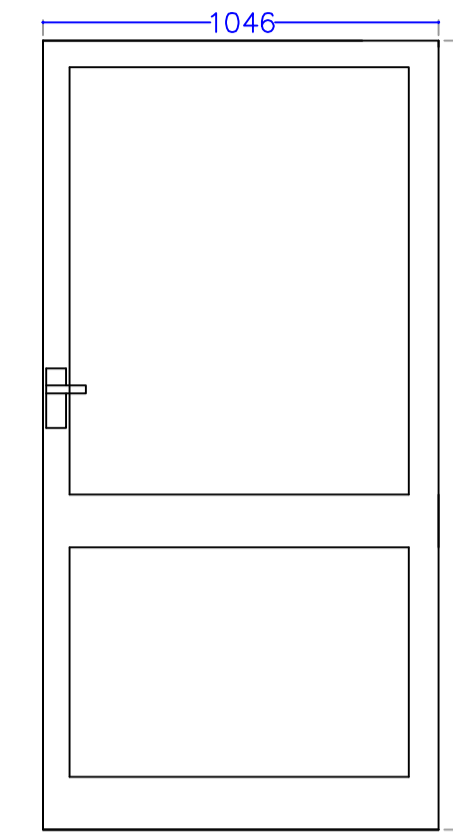
Timber Top Hung sliding sash: W30
1:20 Scale



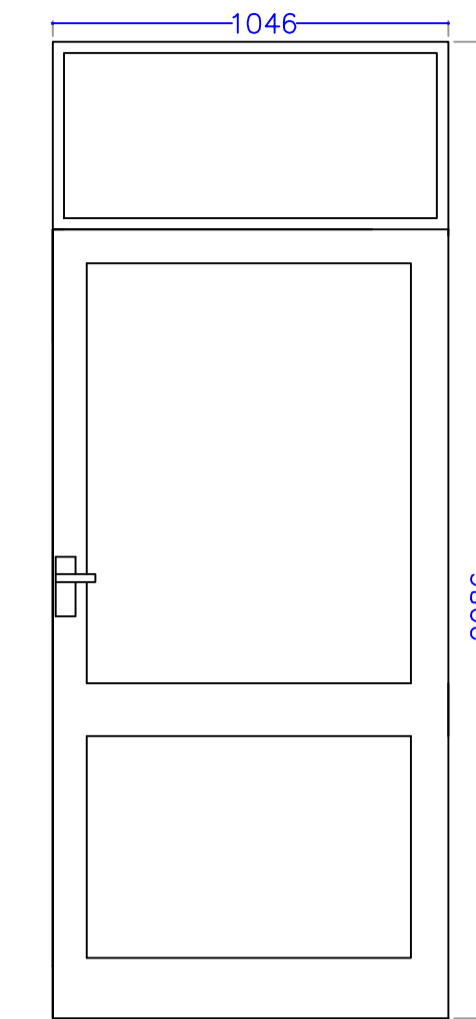
Timber Top Hung sliding sash:
W95-96 1:20 Scale



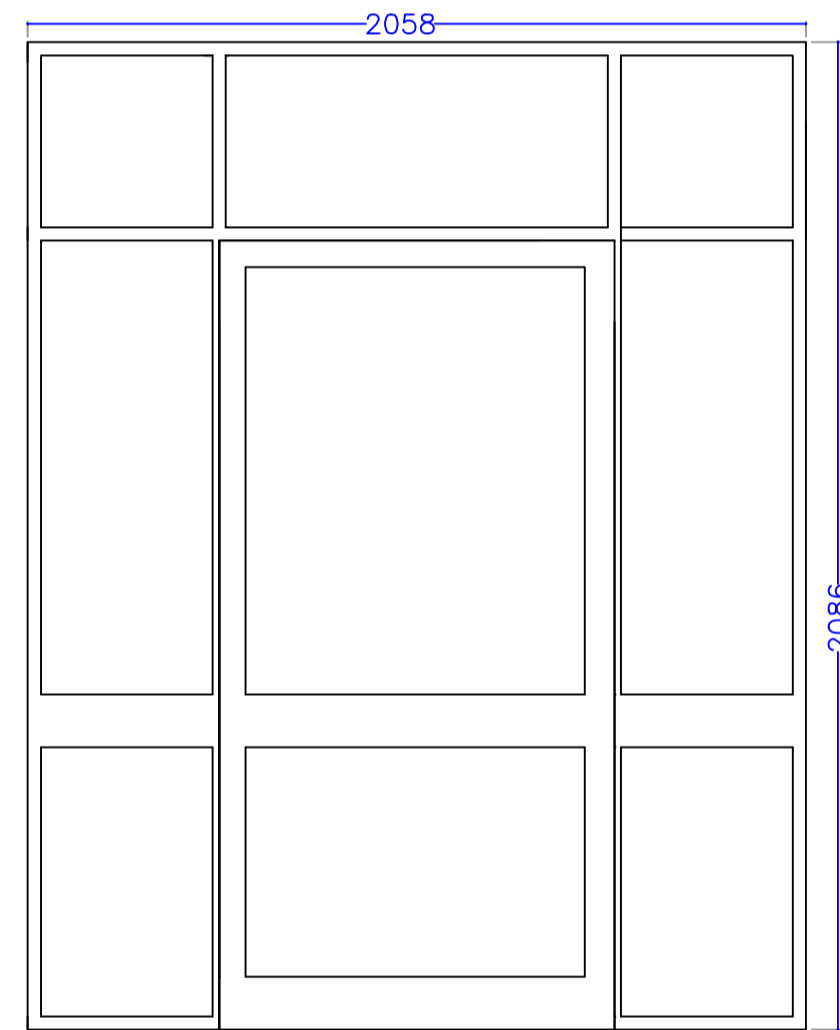
Aluminium Door: D5 1:20 Scale



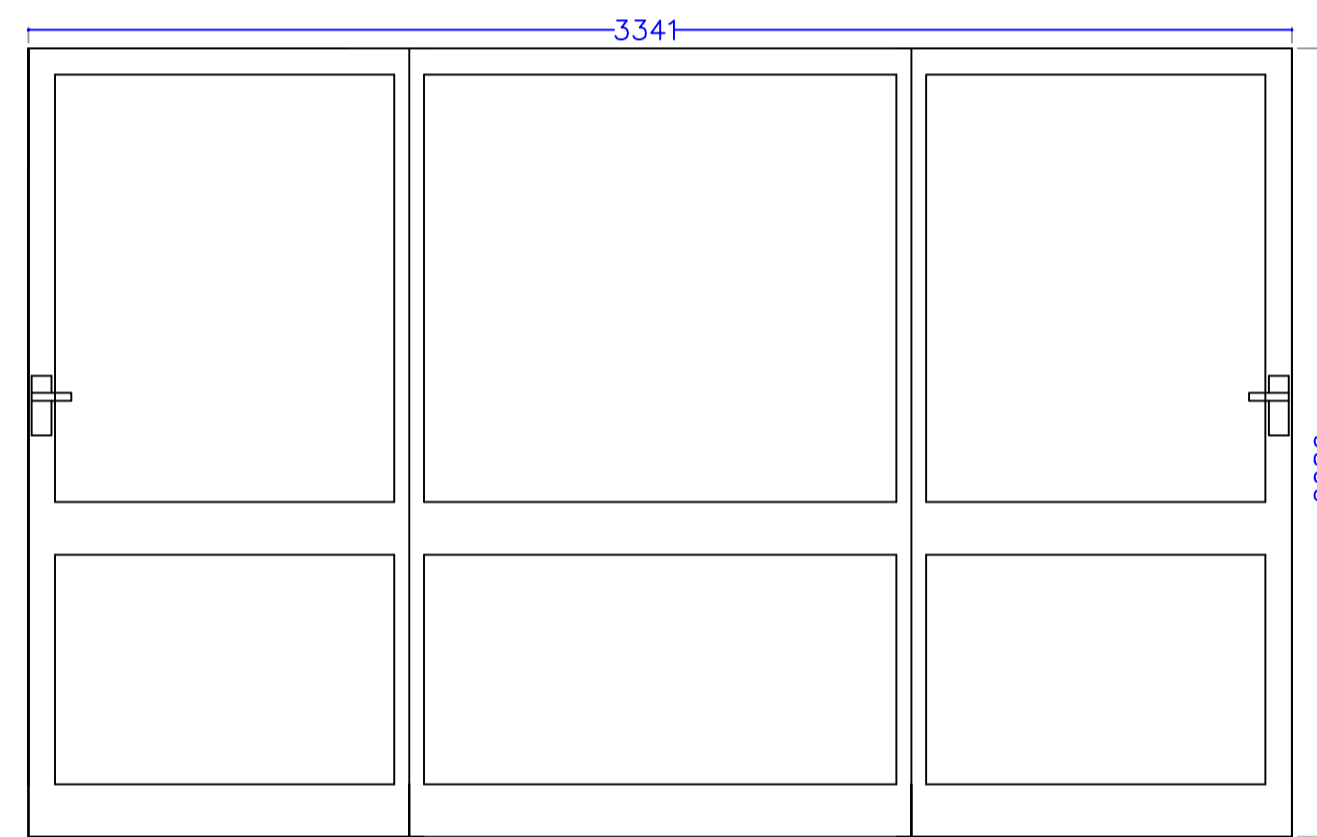
Aluminium Door and Fanlight: D2-3
1:20 Scale



Aluminium Door and surrounding
Windows: D1 1:20 Scale



Aluminium Door and surrounding
Windows: D4 1:20 Scale



Project:	Cambria House	Revisions		
		No	Revision	Dates
Drawing:	Proposed Window and Door Designs			
Project Number:	3898			
Drawing Number:	8	Notes		
Scale:	1:20	Dimensions all to match existing, window scale and opening method to match existing, glazing bars and horn (if applicable) to match existing.		