

Planning Addendum -

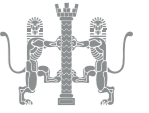
Comparison between Implemented Scheme and Current submission

Templewood Avenue, 14
London, NW3 7XA

July 2024

WOLFF ARCHITECTS





Contents

1.0 Introduction

2.0 Drawings comparison

- 2.1 Site Plan comparison
- 2.2 Floor plans comparison
- 2.3 Elevations comparison
- 2.4 Section comparison

1.0 Introduction

This document has been prepared to accompany the S73 application and listed building application for request of changes to the implemented scheme- Ref 2013/6912/P dated 29/04/2016.

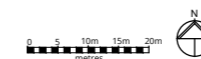
This document highlight the proposed changes to the implemented scheme.

Wolff Architects Ltd have prepared this addendum document in support of a S73 application.

This report should be read in conjunction with the drawings submitted as part of the planning package, including existing and proposed layouts. Reference should be made to the latest relevant issue sheet for a full schedule of these drawings.

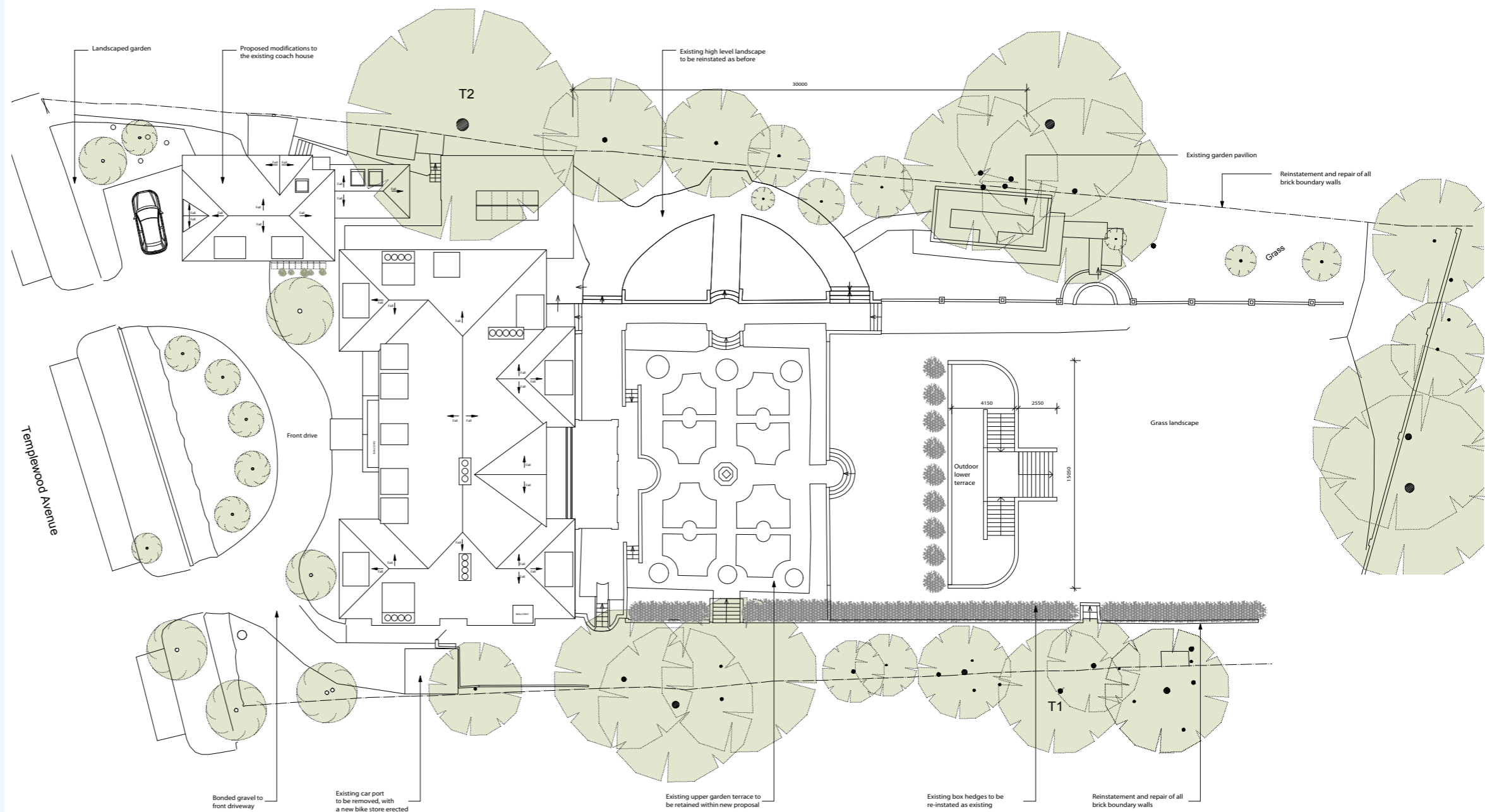


— Boundary application site



2.0 Drawings comparison

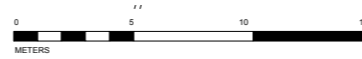
2.1 Site Plan comparison



Drawing Title: Proposed site plan

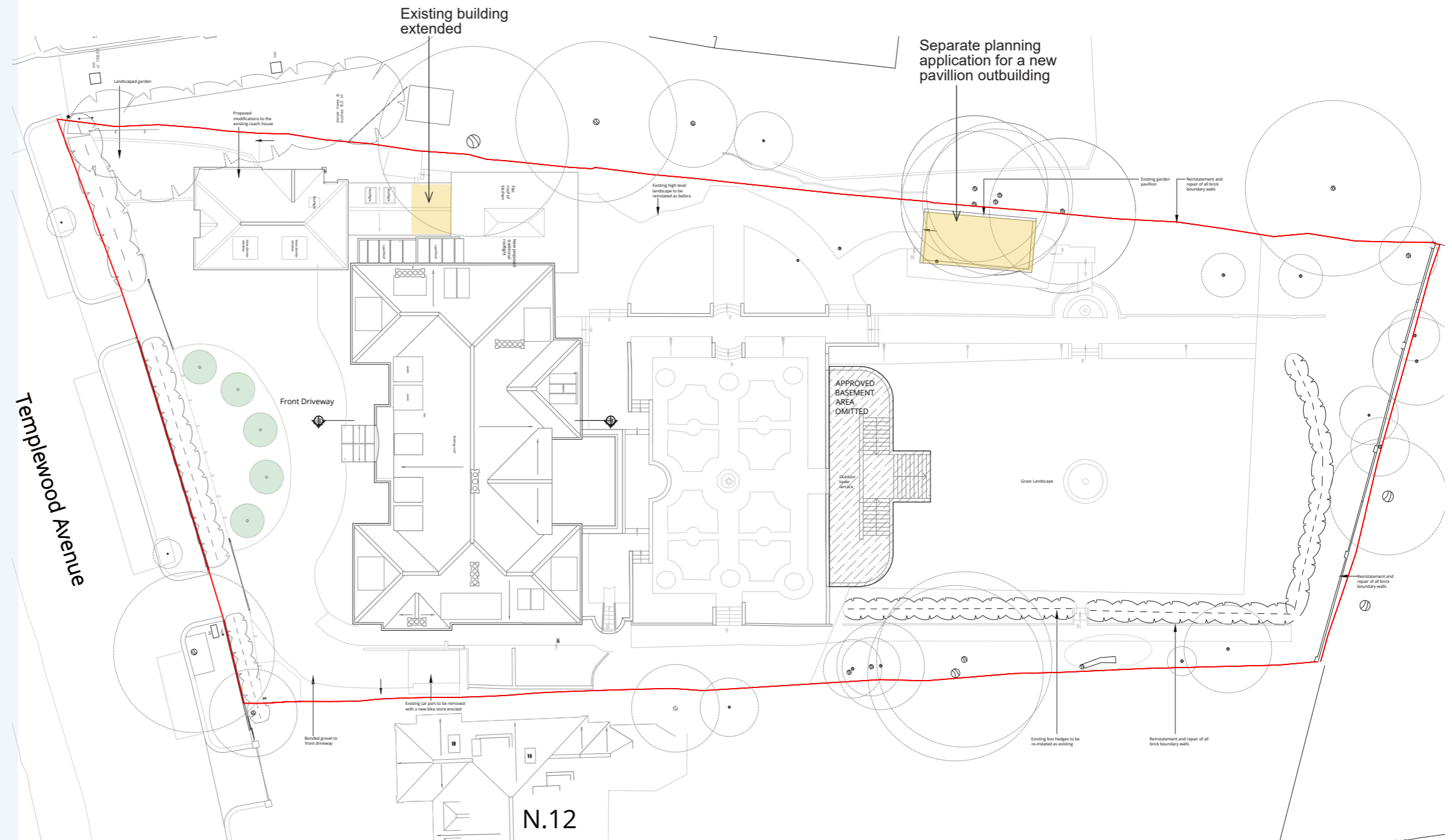
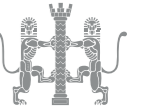


Consented Site Plan

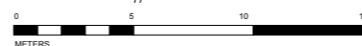


2.0 Drawings comparison

2.1 Site Plan comparison







Proposed Site Plan

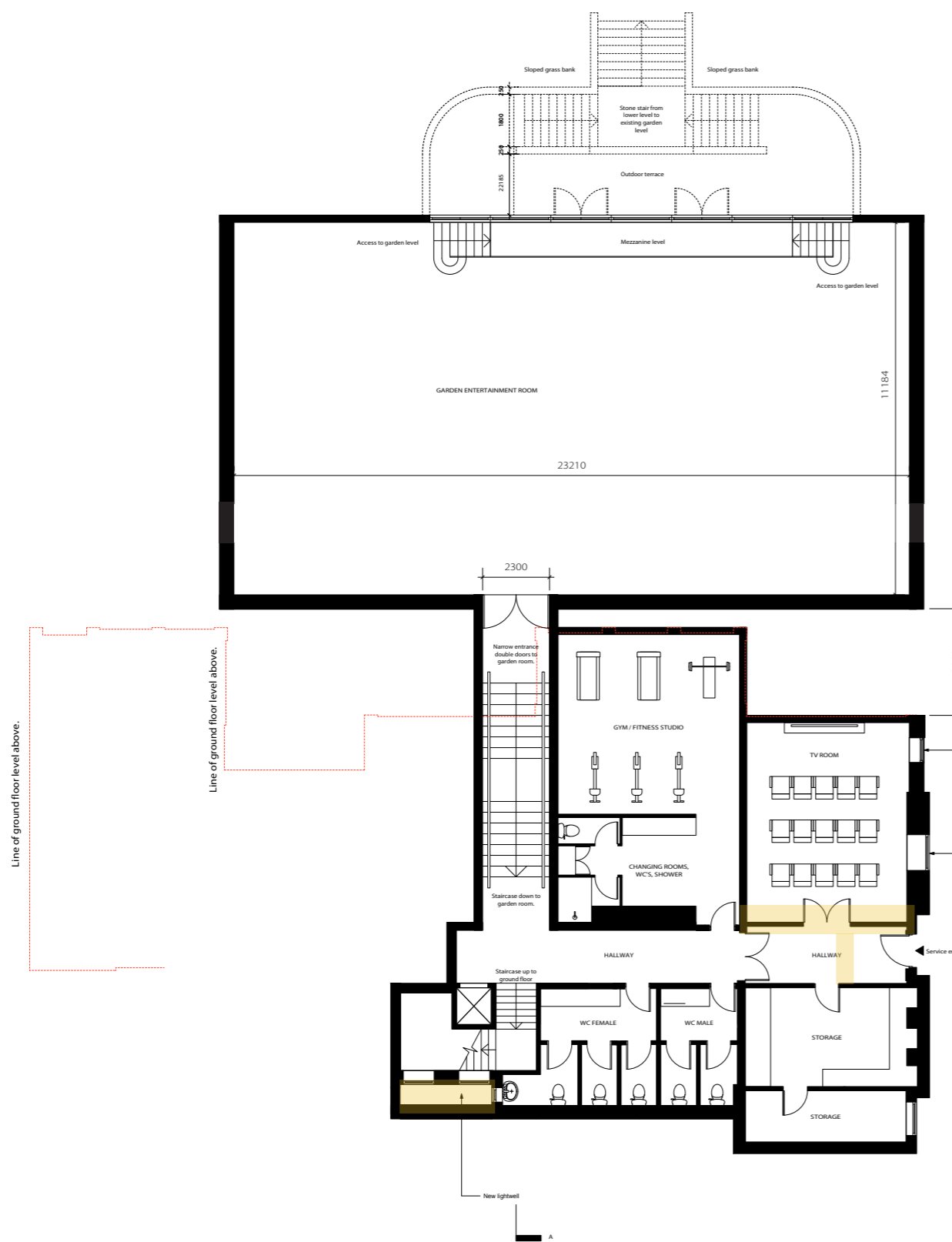


2.0 Drawings comparison

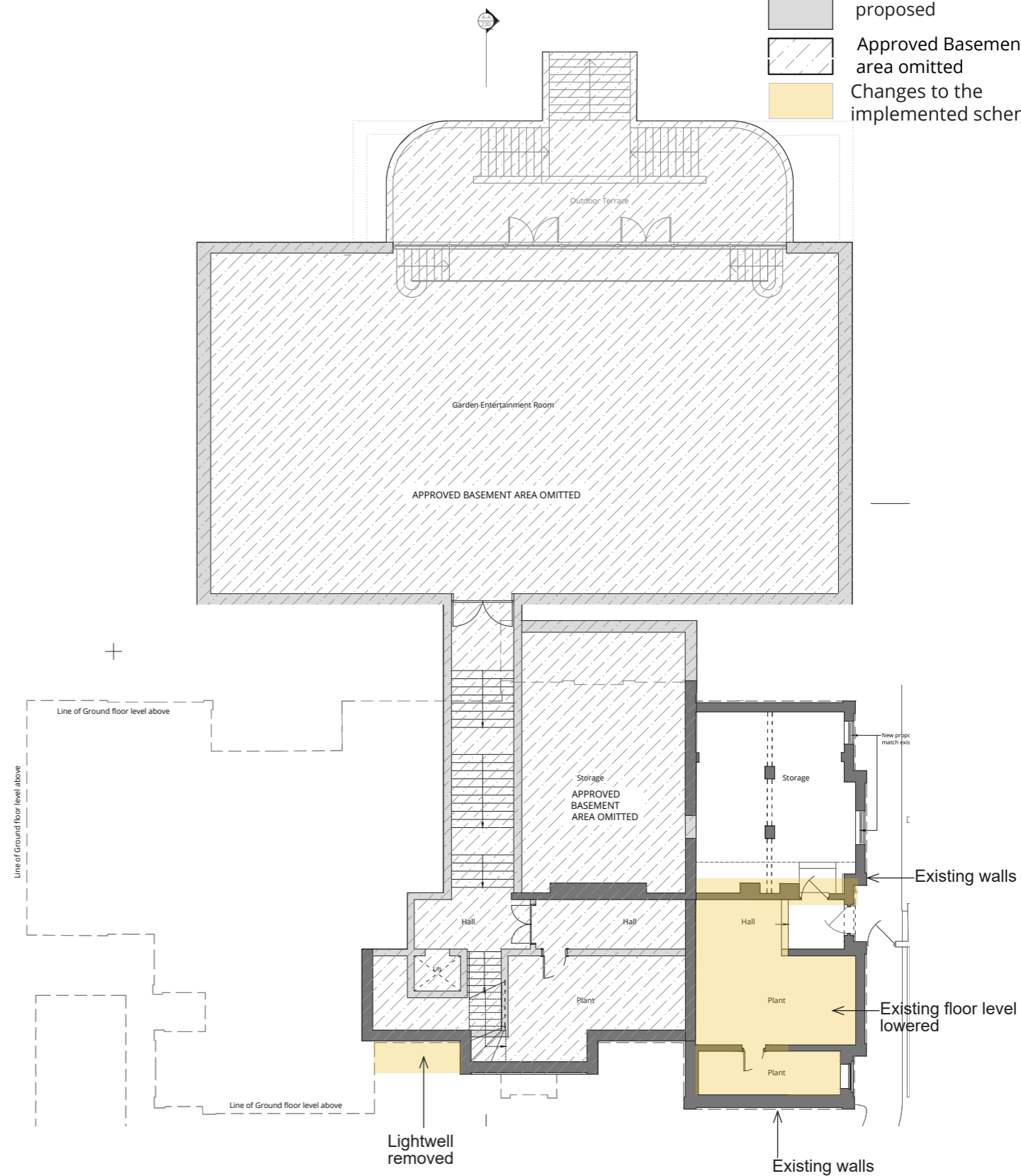
2.2 Floor Plans comparison

KEY

-  existing
-  proposed
-  Approved Basement area omitted
-  Changes to the implemented scheme



Implemented Basement Floor Plan

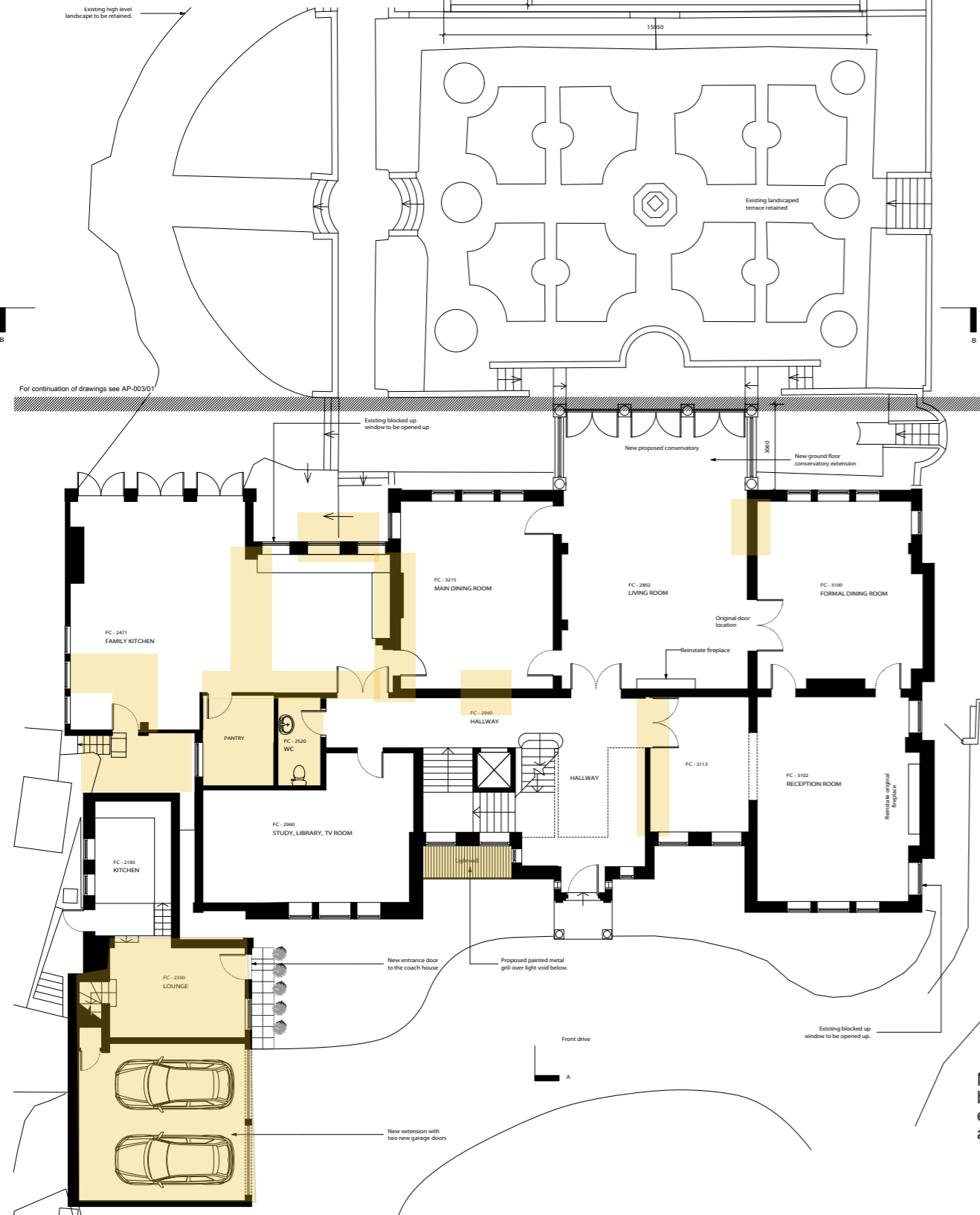


Proposed Basement Floor Plan

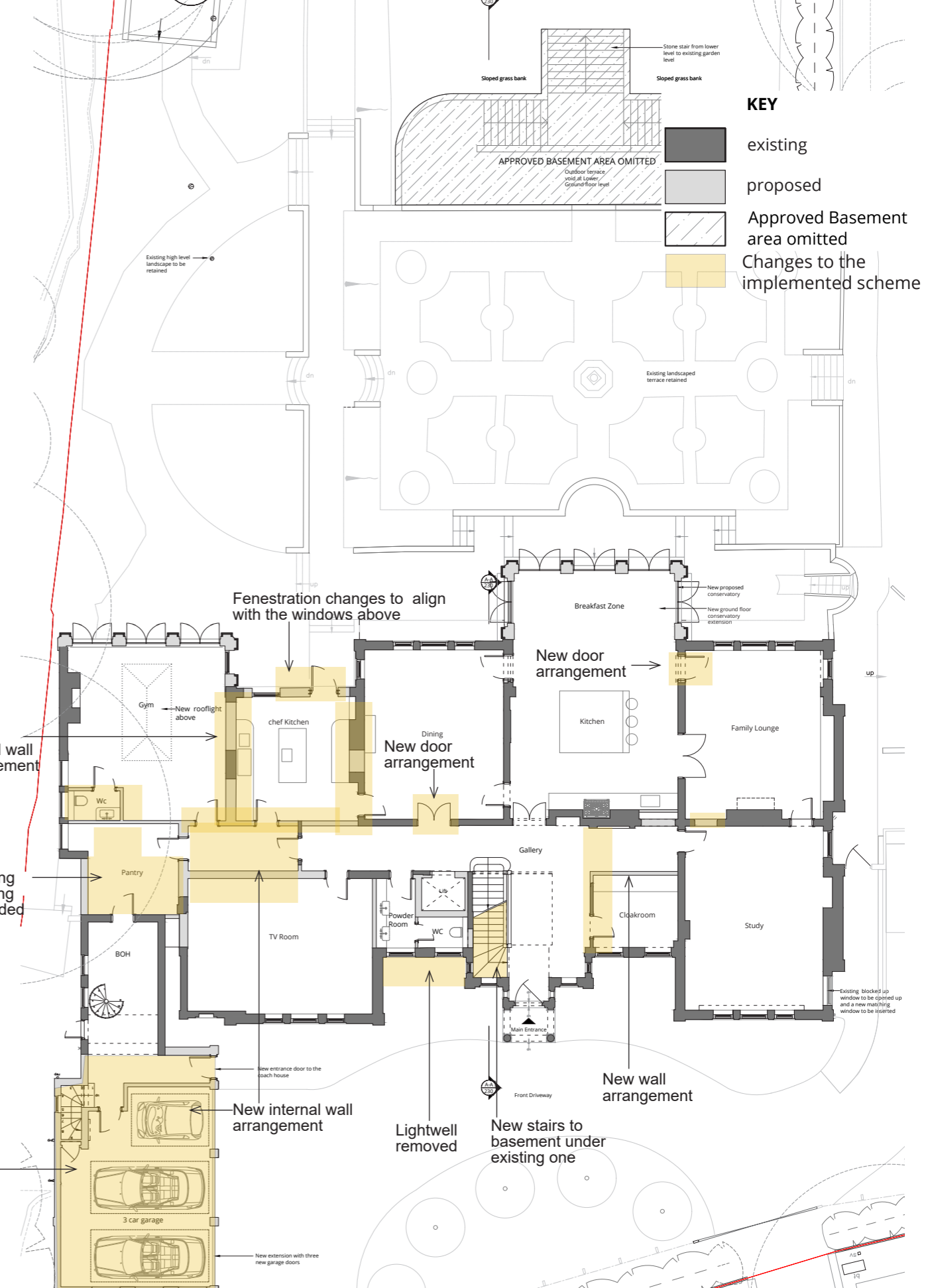


2.0 Drawings comparison

2.2 Floor Plans comparison



Implemented Ground Floor Plan



Proposed Ground Floor Plan




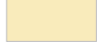
KEY

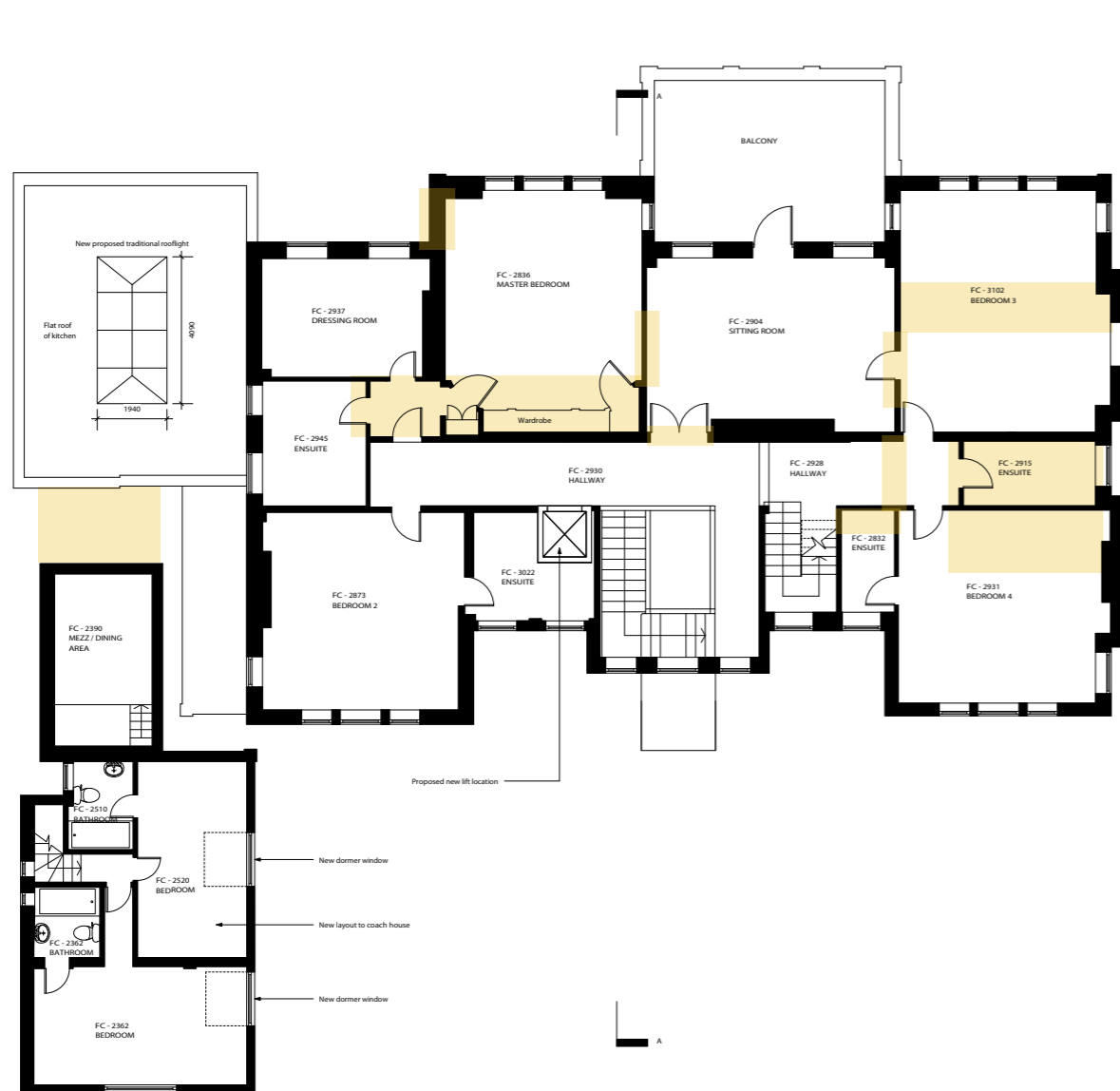
- existing
- proposed
- Approved Basement area omitted
- Changes to the implemented scheme

2.0 Drawings comparison

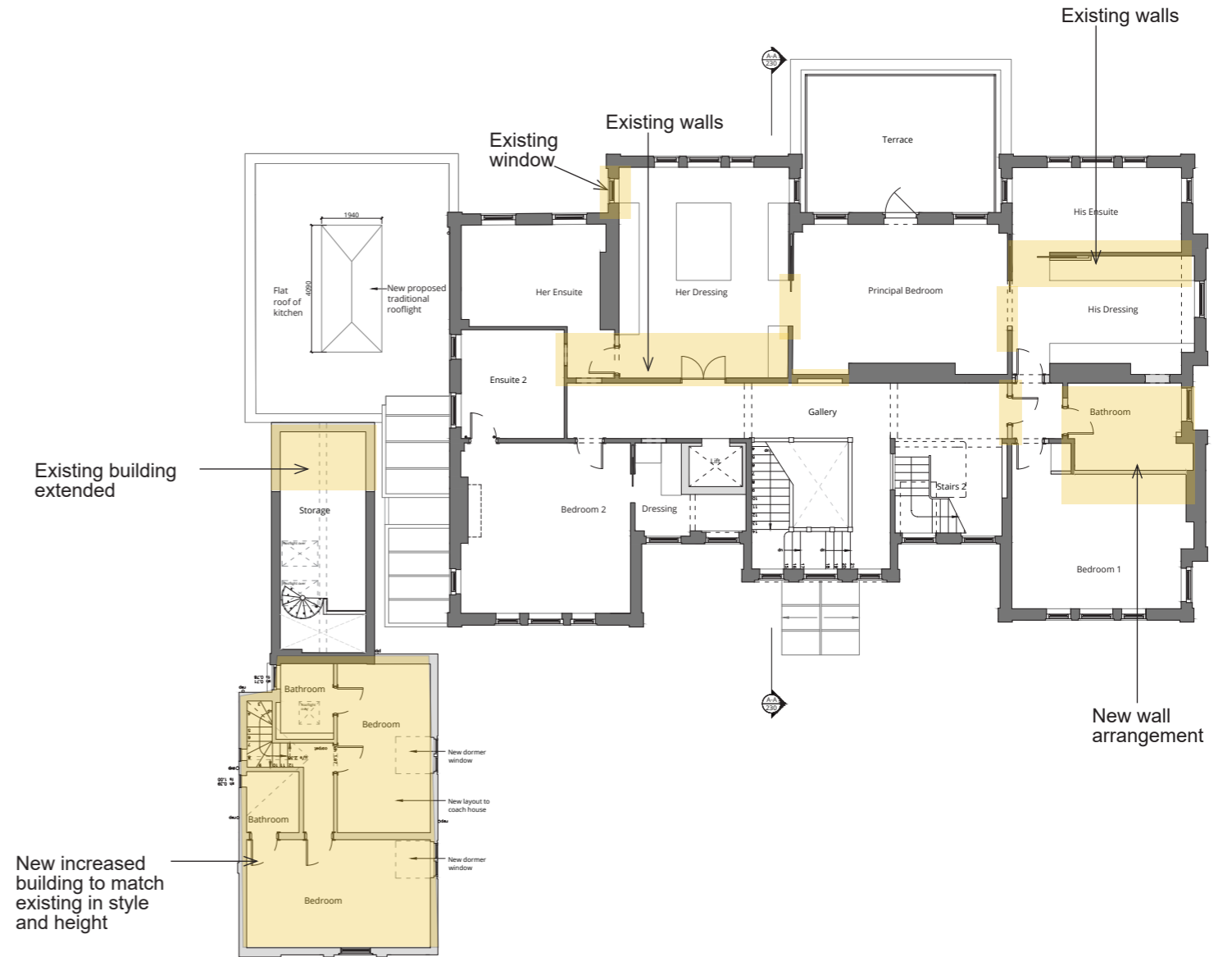
2.2 Floor Plans comparison

KEY

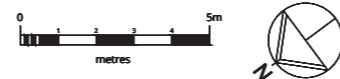
	existing
	proposed
	Approved Basement area omitted
	Changes to the implemented scheme



Implemented First Floor Plan






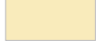
Proposed First Floor Plan

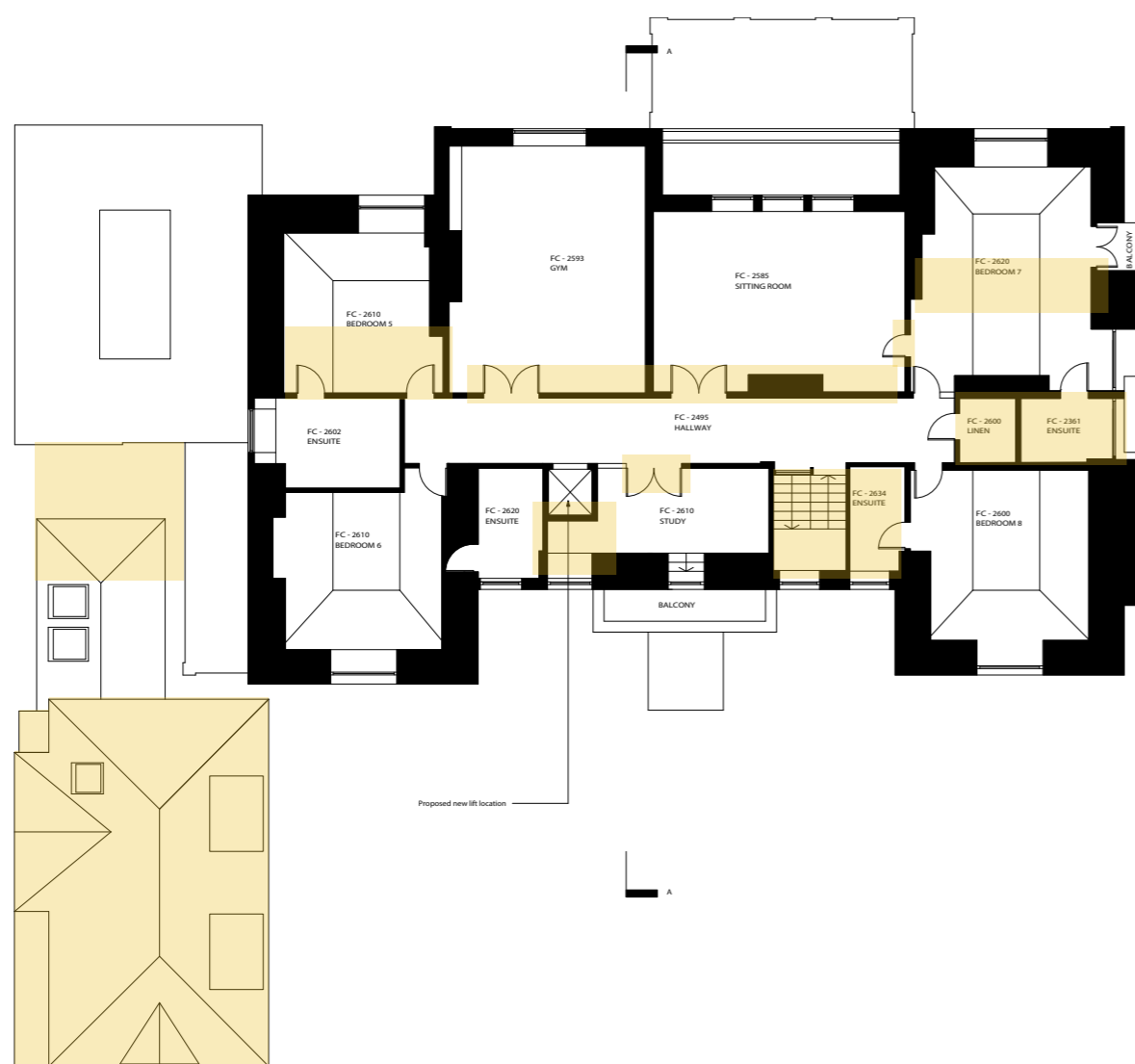


2.0 Drawings comparison

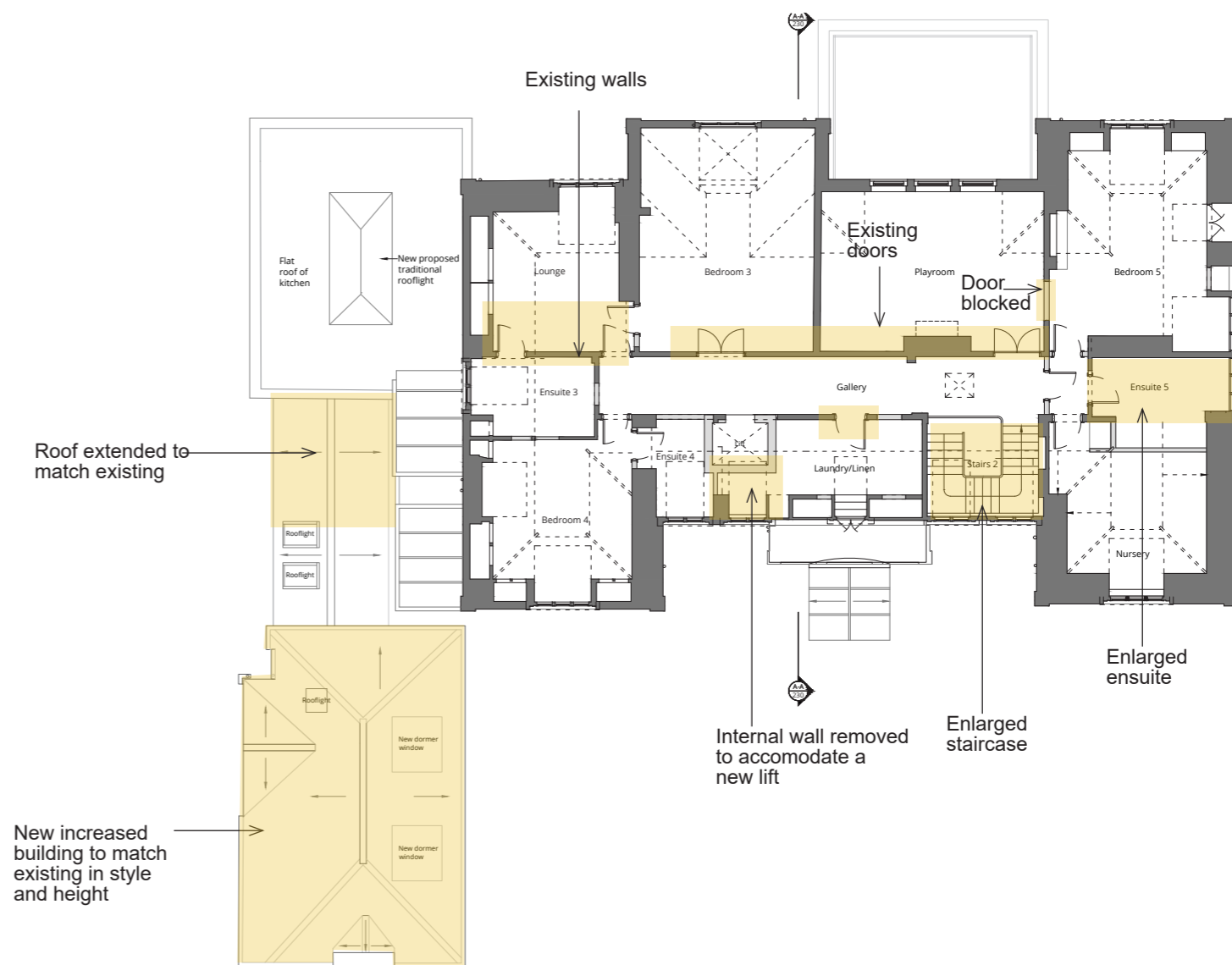
2.2 Floor Plans comparison

KEY

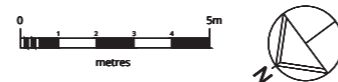
-  existing
-  proposed
-  Approved Basement area omitted
-  Changes to the implemented scheme



Implemented Second Floor Plan



Proposed Second Floor Plan

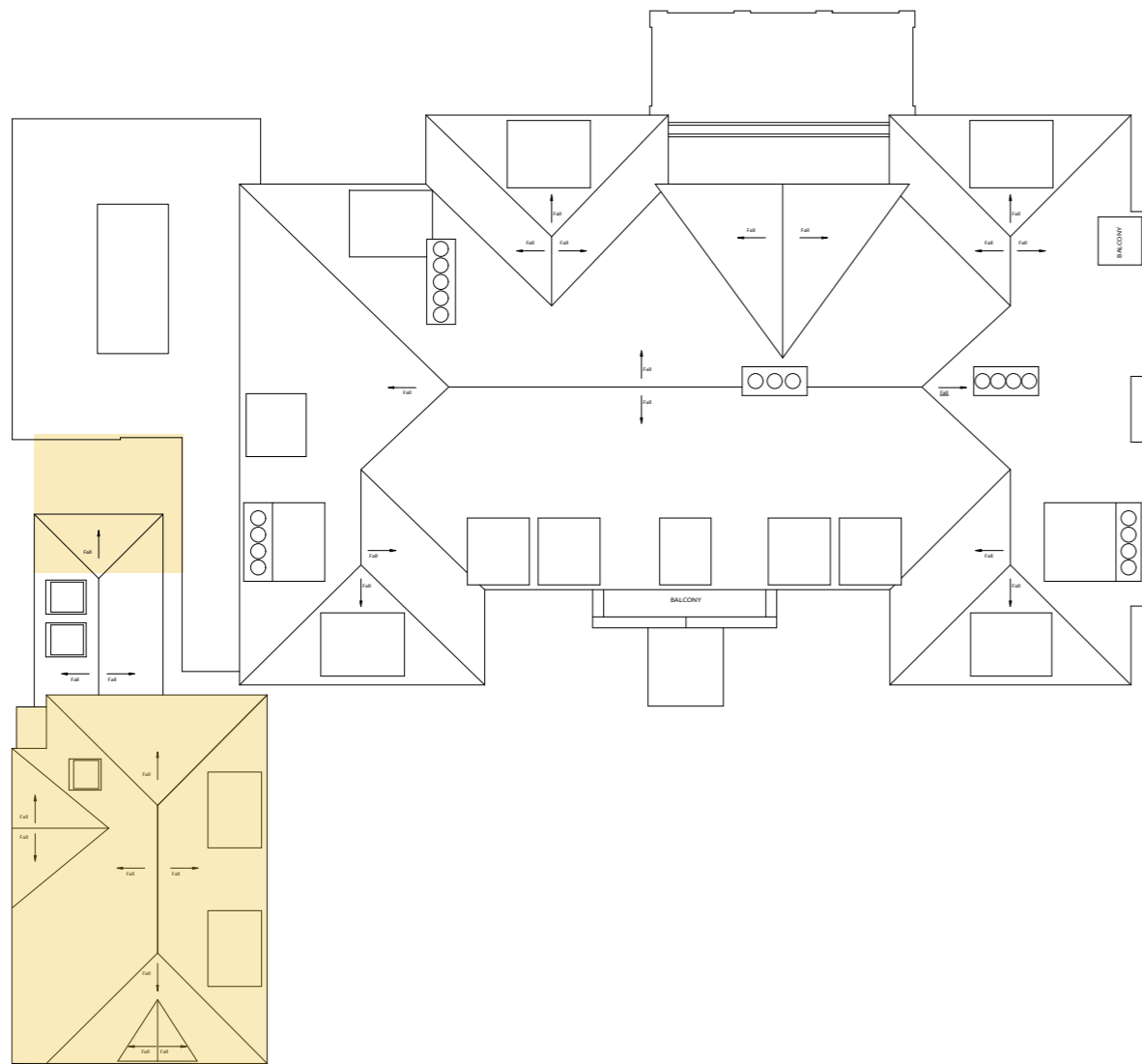


2.0 Drawings comparison

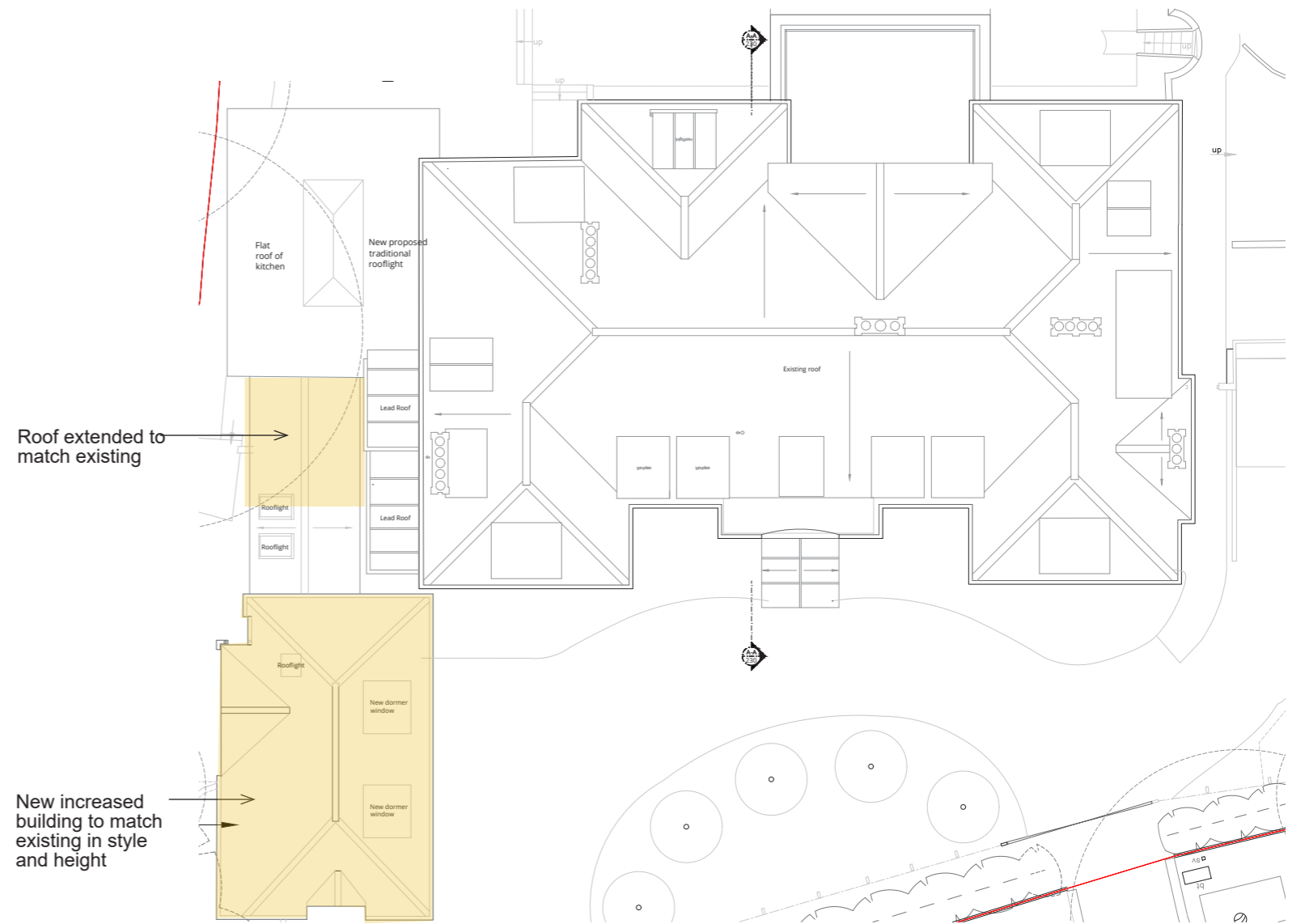
2.2 Floor Plans comparison

KEY

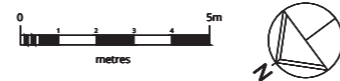
- existing
- proposed
- Approved Basement area omitted
- Changes to the implemented scheme



Implemented Roof Floor Plan



Proposed Roof Floor Plan

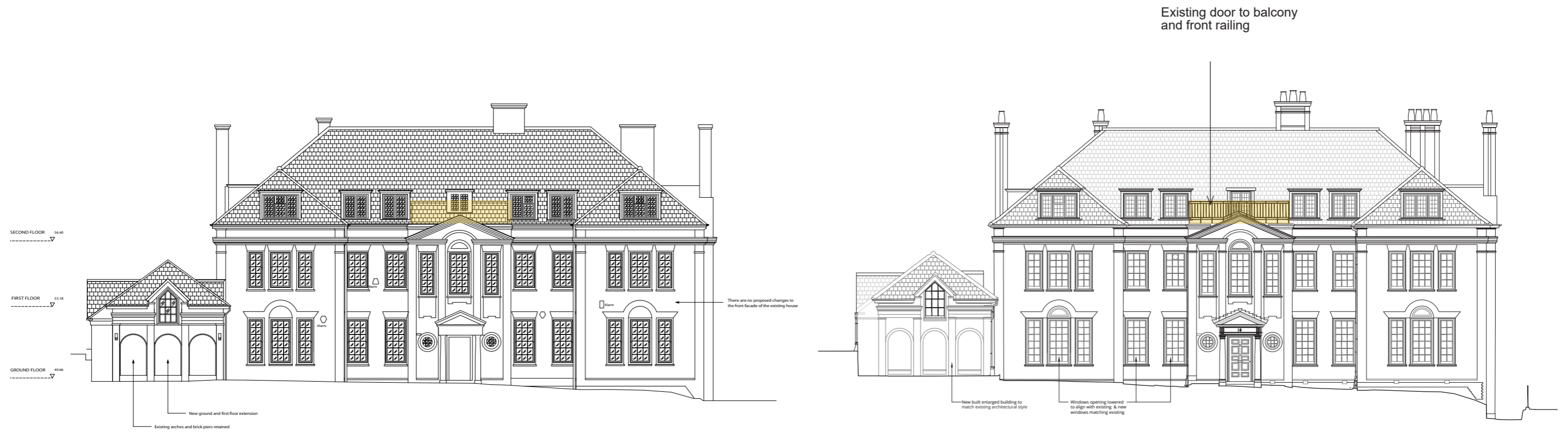


2.0 Drawings comparison

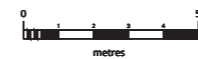
KEY

Changes to the implemented scheme

2.3 Elevations comparison



Implemented Front Elevation



Proposed Front Elevation

2.0 Drawings comparison

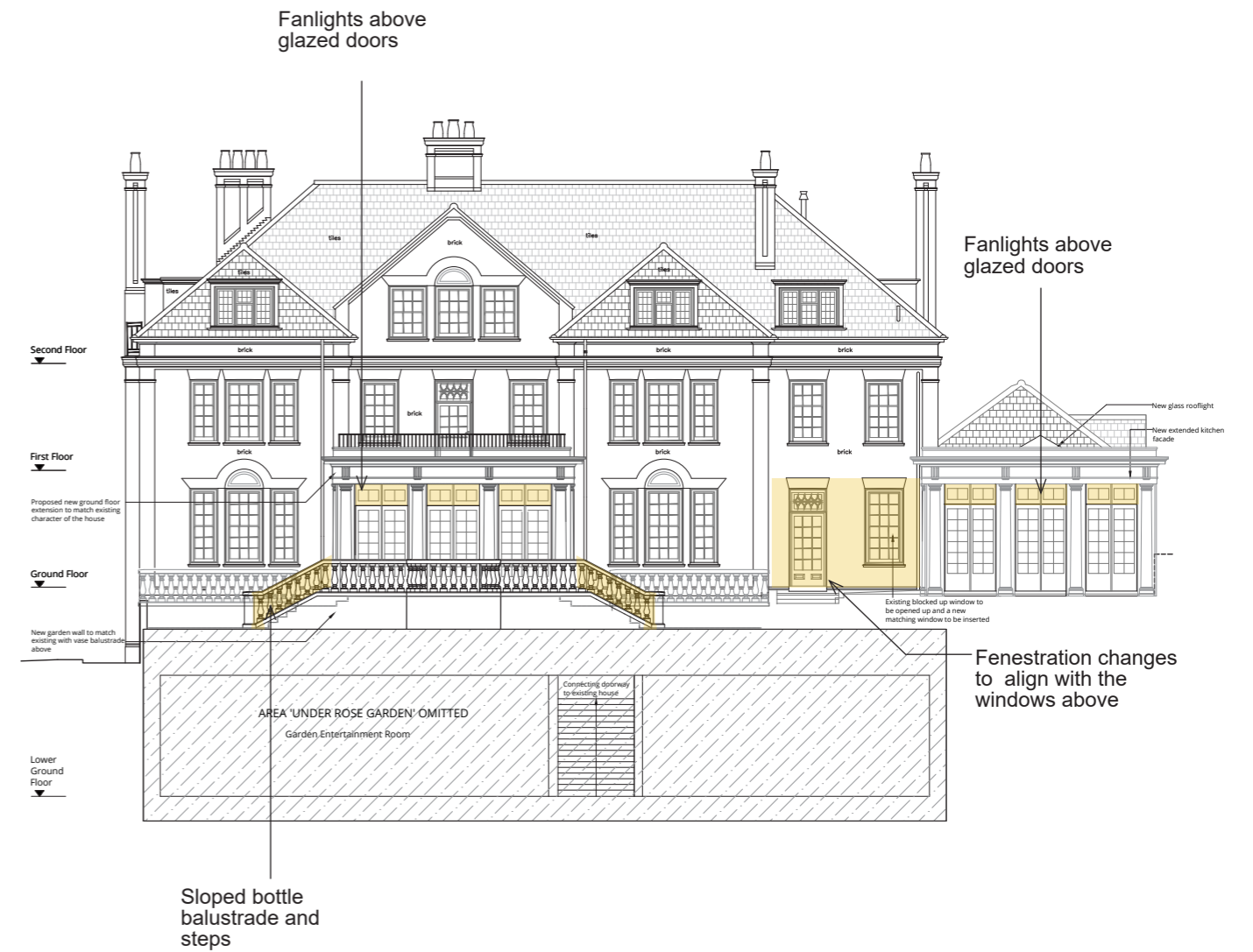
2.3 Elevations comparison

KEY

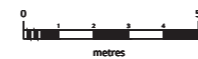
- existing
- proposed
- Approved Basement area omitted
- Changes to the implemented scheme



Implemented Rear Elevation



Proposed Rear Elevation

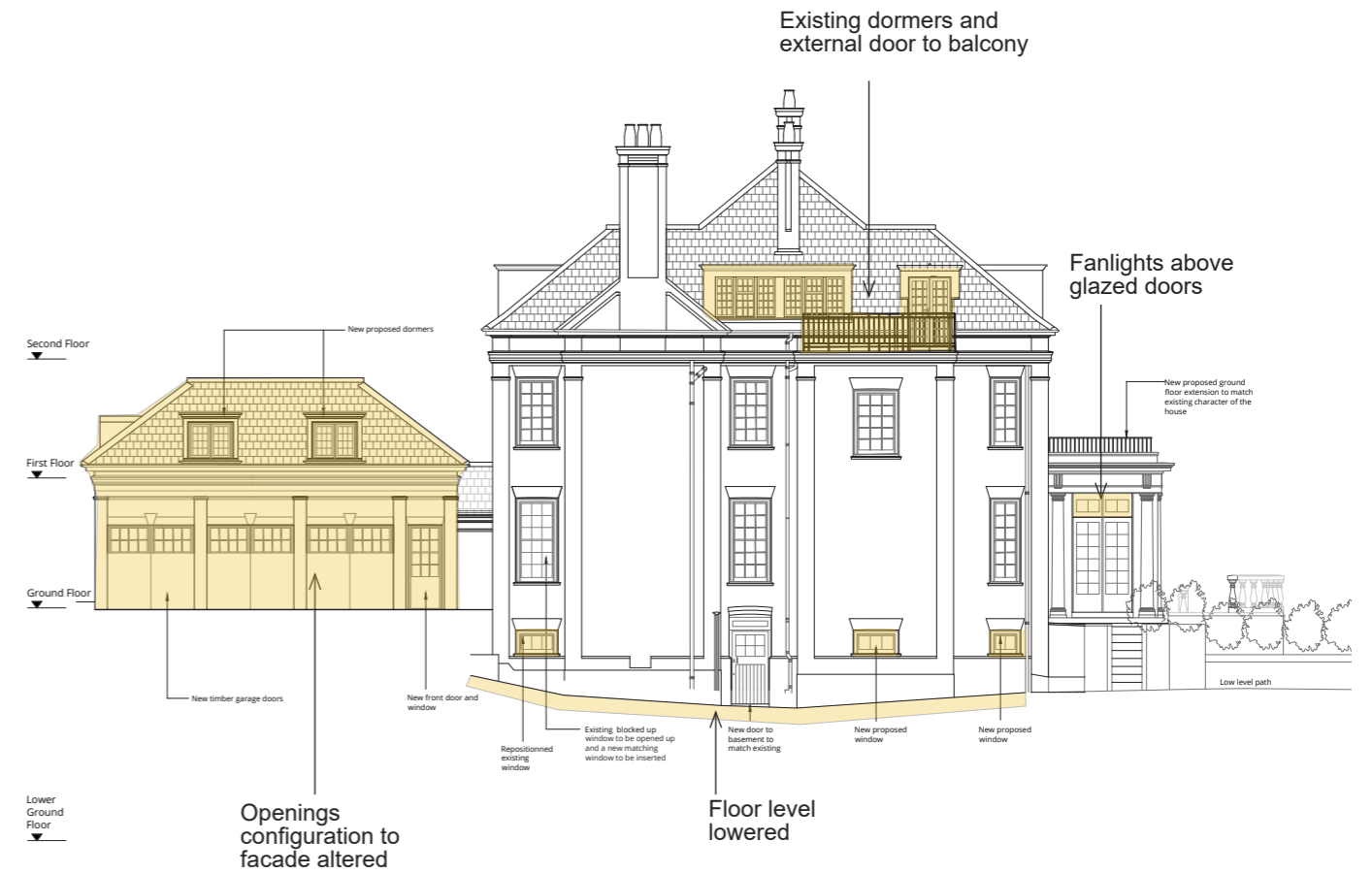
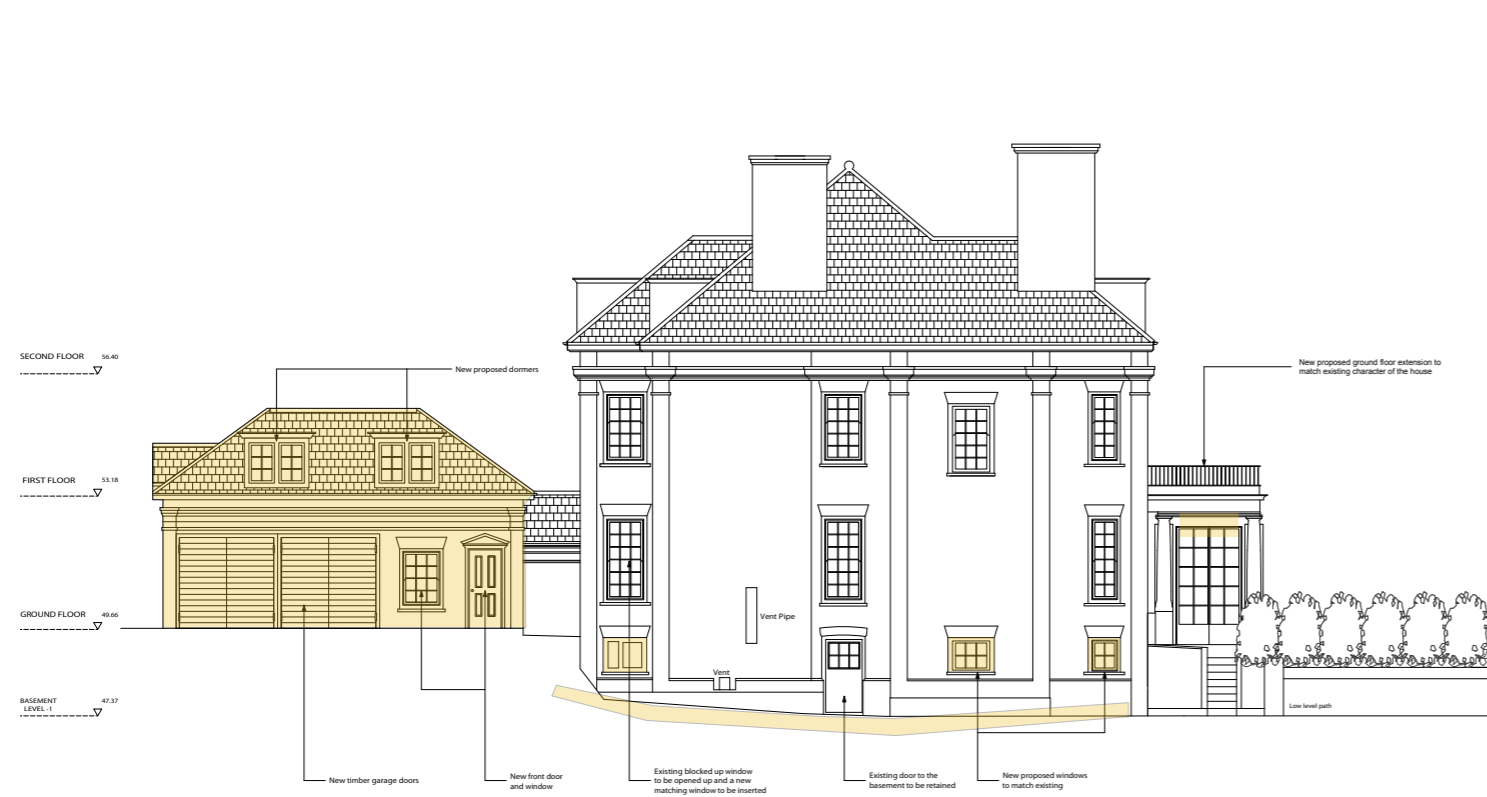


2.0 Drawings comparison

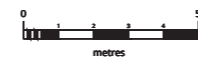
2.3 Elevations comparison

KEY

Changes to the implemented scheme



Implemented Side Elevation (North Facing)



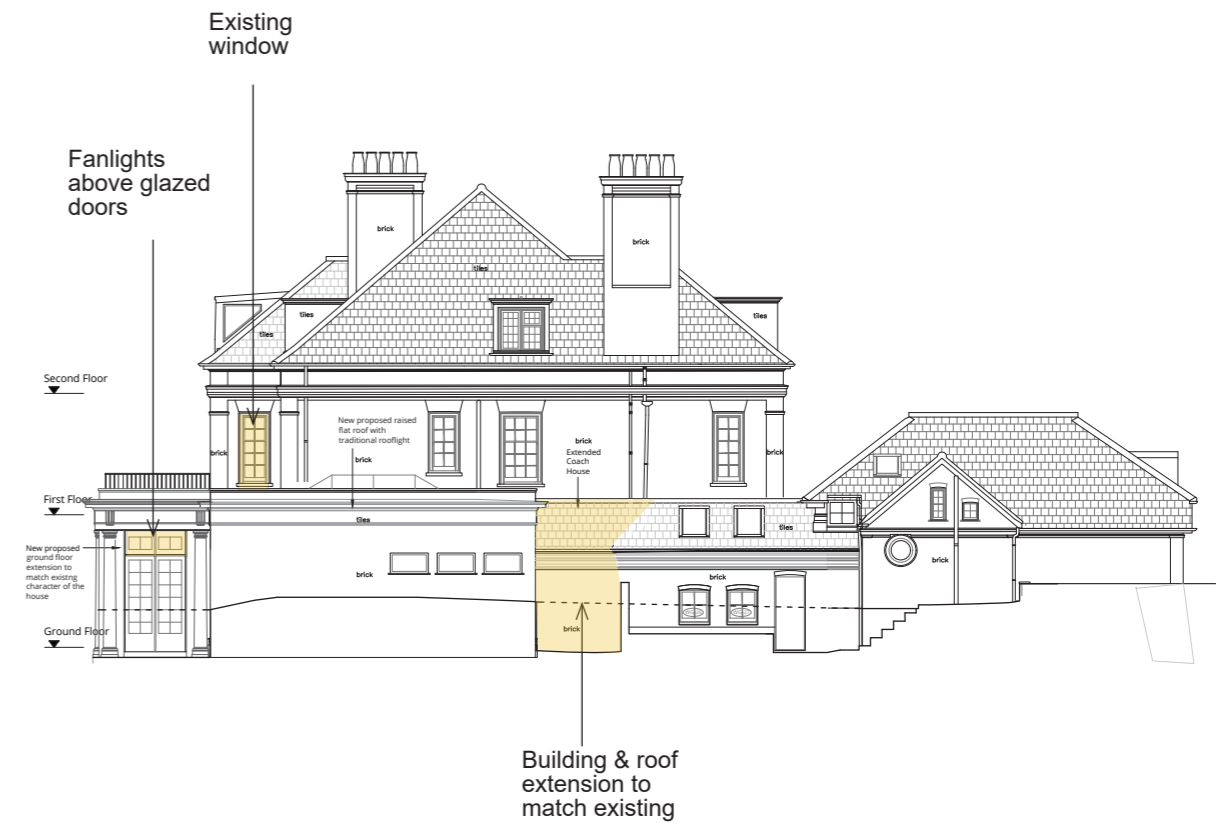
Proposed Side Elevation (North Facing)

2.0 Drawings comparison

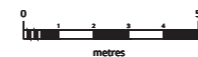
2.3 Elevations comparison



Implemented Side Elevation (South Facing)



Proposed Side Elevation (South Facing)

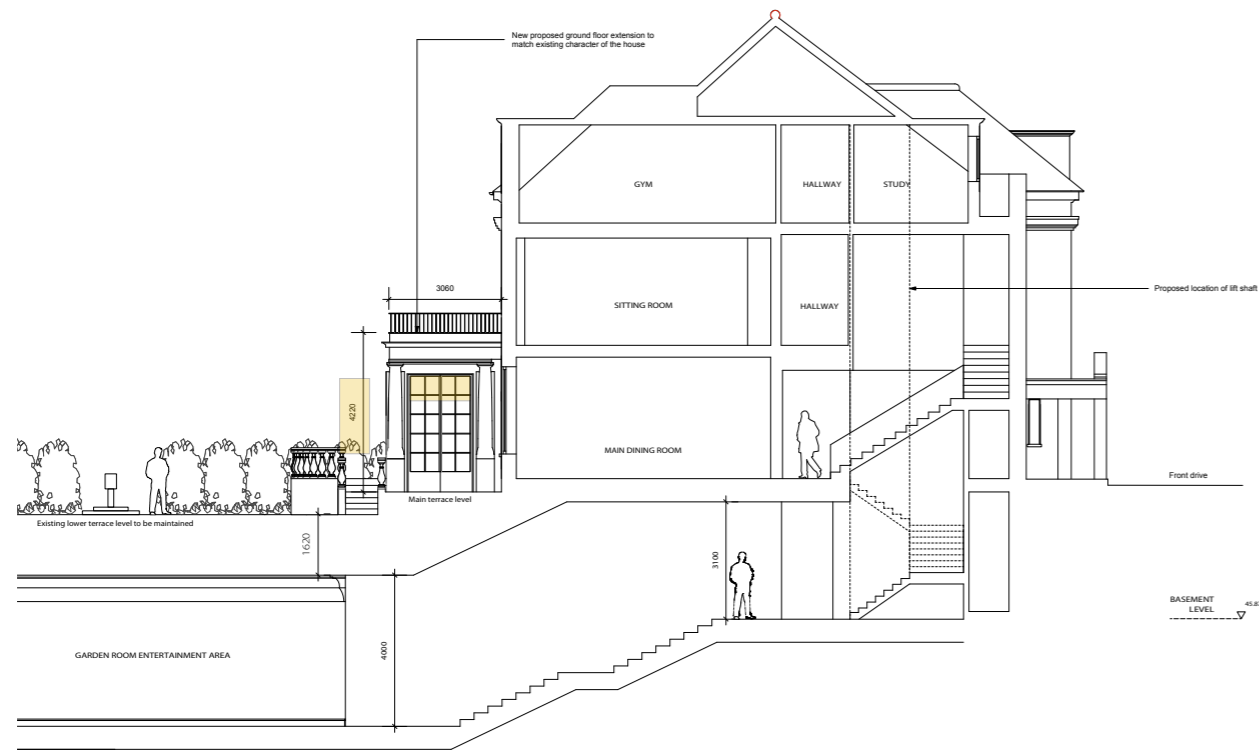


2.0 Drawings comparison

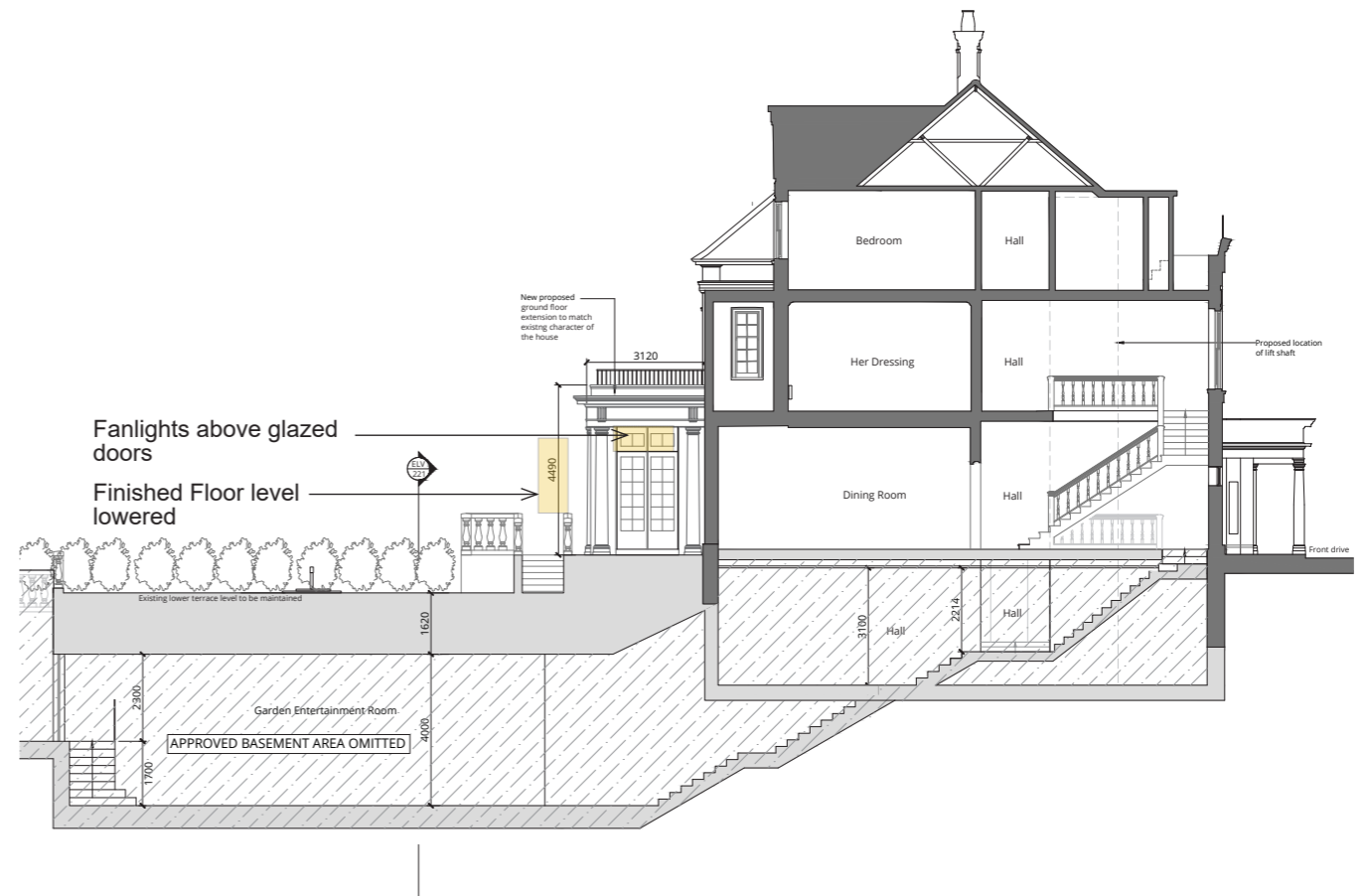
2.4 Sections comparison

KEY

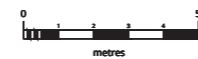
- existing
- proposed
- Approved Basement area omitted
- Changes to the implemented scheme



Implemented Section AA



Proposed Section AA





Wolff Architects Limited trading as Wolff Architects
Registered in England No. 5113405 Registered Office 16 Lambton Place, London, W11 2SH