

Site Location

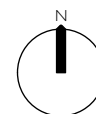
ed toovey architects

studio 401 royle building
31 wenlock road
london n1 7sh
07880 725763
edtoovey@yahoo.co.uk

Revisions:

PLANNING ISSUE

- Always take site measurements to verify dimensions
- Refer to M&E Engineers drawings for all services



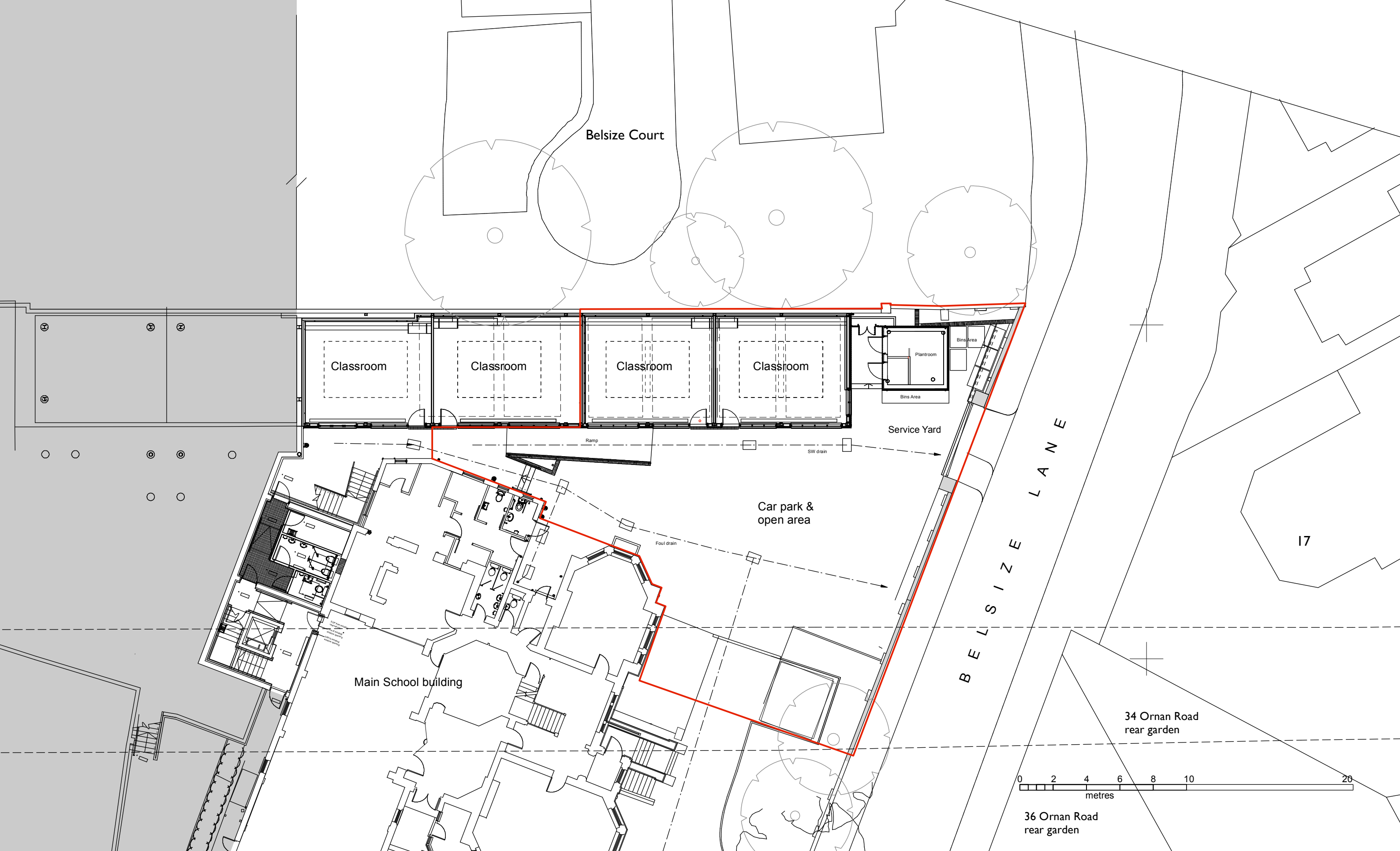
St. Christopher's School: Reception Classrooms Project

Location plan

February 2020

Drwg No. 2026 / GL / 000 -

Scale 1:1000 @ A3



ed toovey architects

studio 401 royle building
31 wenlock road
london n1 7sh
07880 725763
edtoovey@yahoo.co.uk

Revisions:

PLANNING ISSUE

- Always take site measurements
to verify dimensions
- Refer to M&E Engineers
drawings for all services



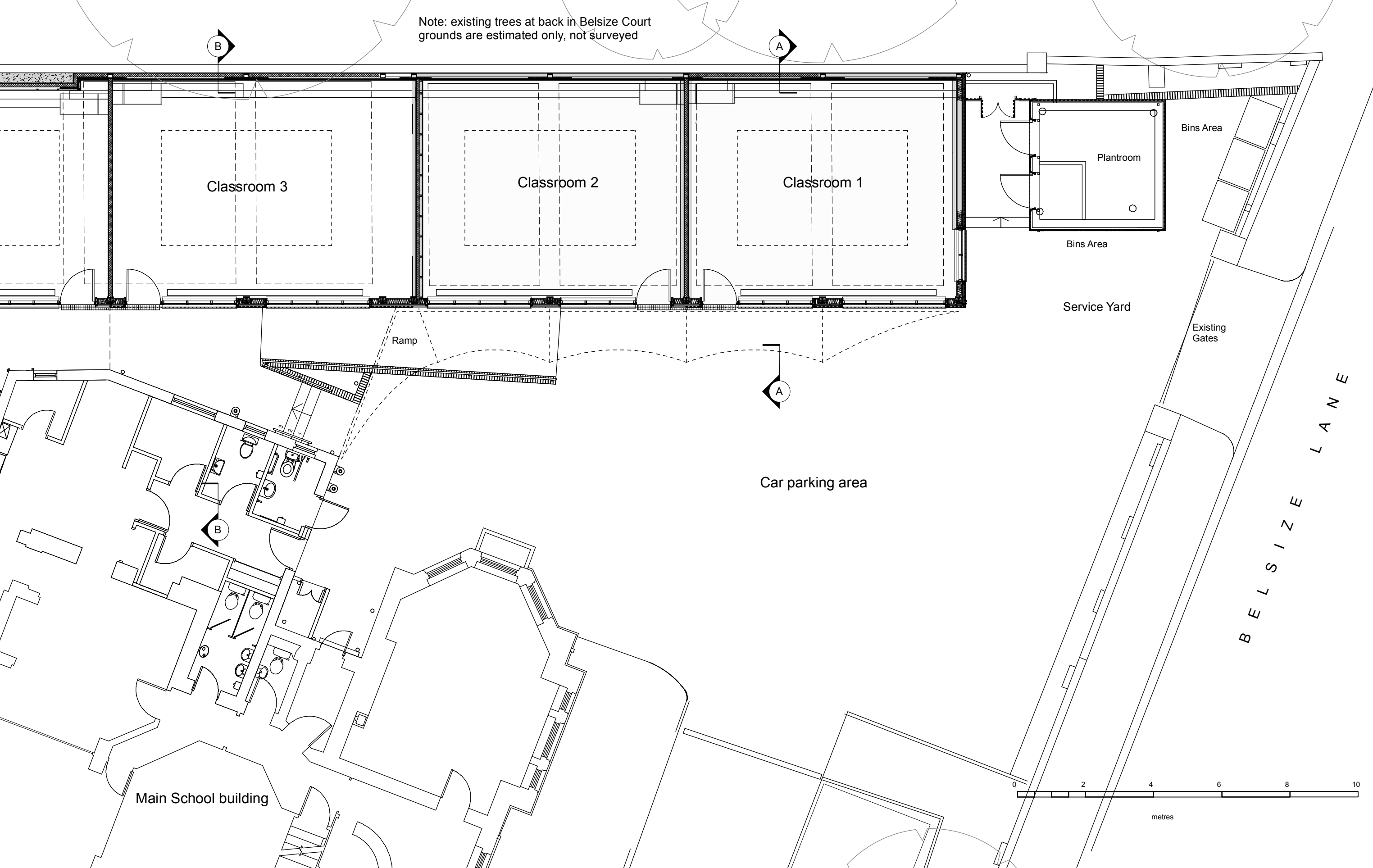
St. Christopher's School: Reception Classrooms Project

Site plan existing

January 2020

Drwg No. 2026 / GL / 002 -

Scale 1:200 @ A3



ed toovey architects

studio 401 royle building
31 wenlock road
london n1 7sh
07880 725763
edtoovey@yahoo.co.uk

Revisions:

PLANNING ISSUE

- Always take site measurements
to verify dimensions
- Refer to M&E Engineers
drawings for all services



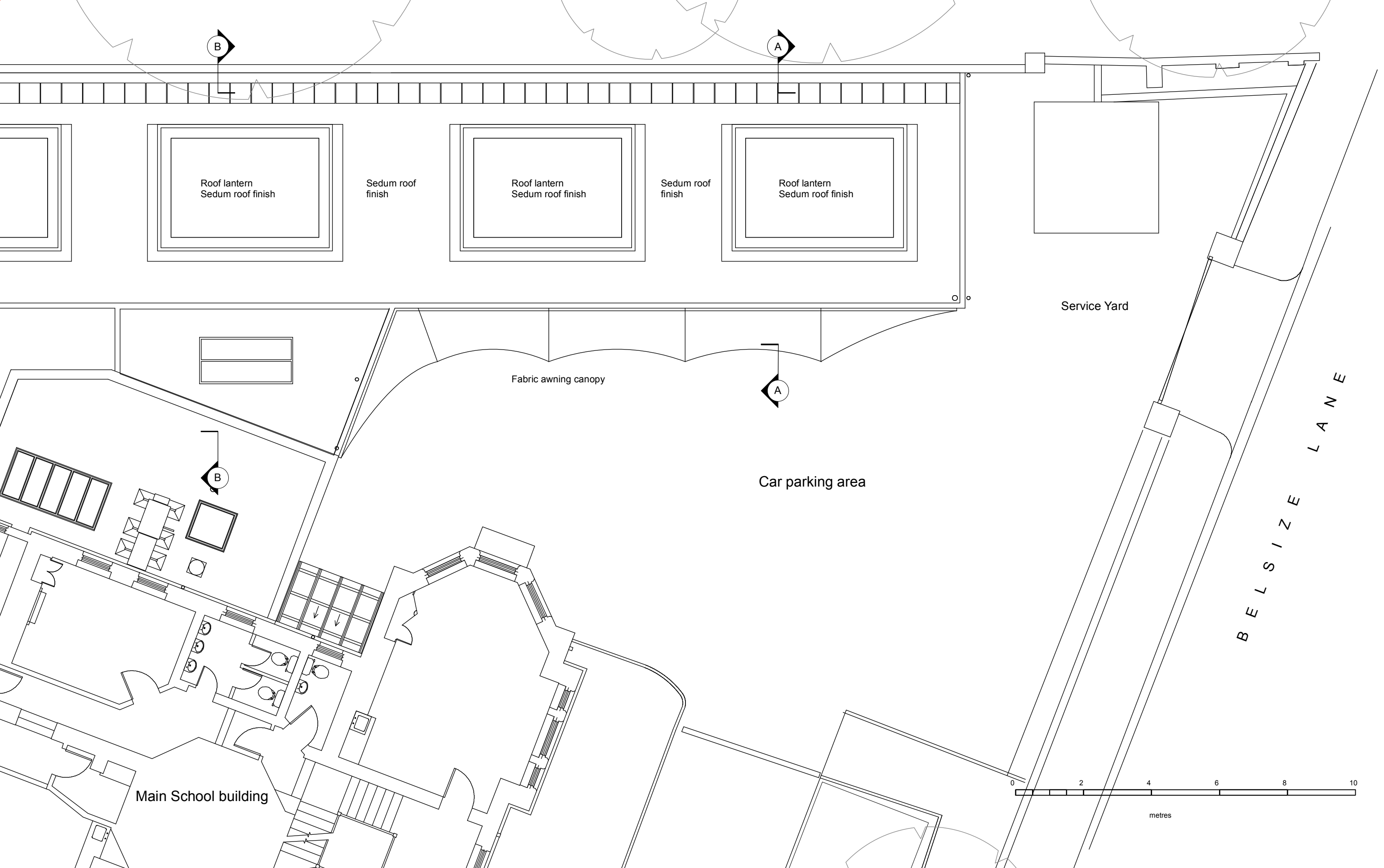
St. Christopher's School: Reception Classrooms Project

Ground floor plan existing

January 2020

Drwg No. 2026 / GA / 001 -

Scale 1:100 @ A3



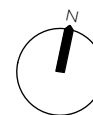
ed tooveyarchitects

studio 401 royle building
31 wenlock road
london n1 7sh
07880 725763
edtoovey@yahoo.co.uk

Revisions:

PLANNING ISSUE

- Always take site measurements
to verify dimensions
- Refer to M&E Engineers
drawings for all services



St. Christopher's School: Reception Classrooms Project

Roof plan existing

January 2020

Drwg No. 2026 / GA / 002 -

Scale 1:100 @ A3



ed tooveyarchitects

studio 401 royle building
31 wenlock road
london n1 7sh
07880 725763
edtoovey@yahoo.co.uk

Revisions:

PLANNING ISSUE

- Always take site measurements
to verify dimensions
- Refer to M&E Engineers
drawings for all services

St. Christopher's School: Reception Classrooms Project

East Elevation existing

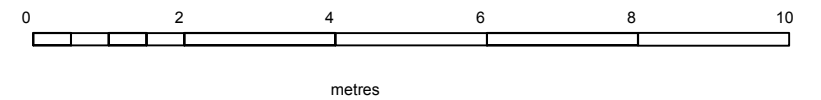
January 2020

Drwg No. 2026 / GE / 002 -

Scale 1:100 @ A3



Note: existing trees at back in Belsize Court grounds are estimated only, not surveyed



ed toovey architects

studio 401 royle building
31 wenlock road
london n1 7sh
07880 725763
edtoovey@yahoo.co.uk

Revisions:

PLANNING ISSUE

- Always take site measurements
to verify dimensions
- Refer to M&E Engineers
drawings for all services

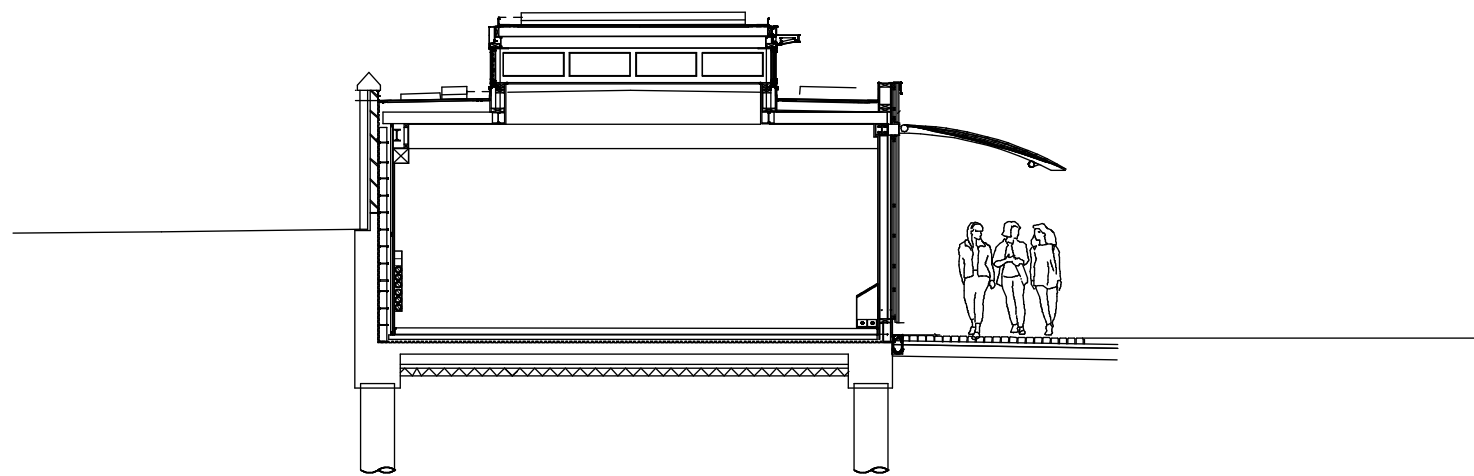
St. Christopher's School: Reception Classrooms Project

South Elevation existing

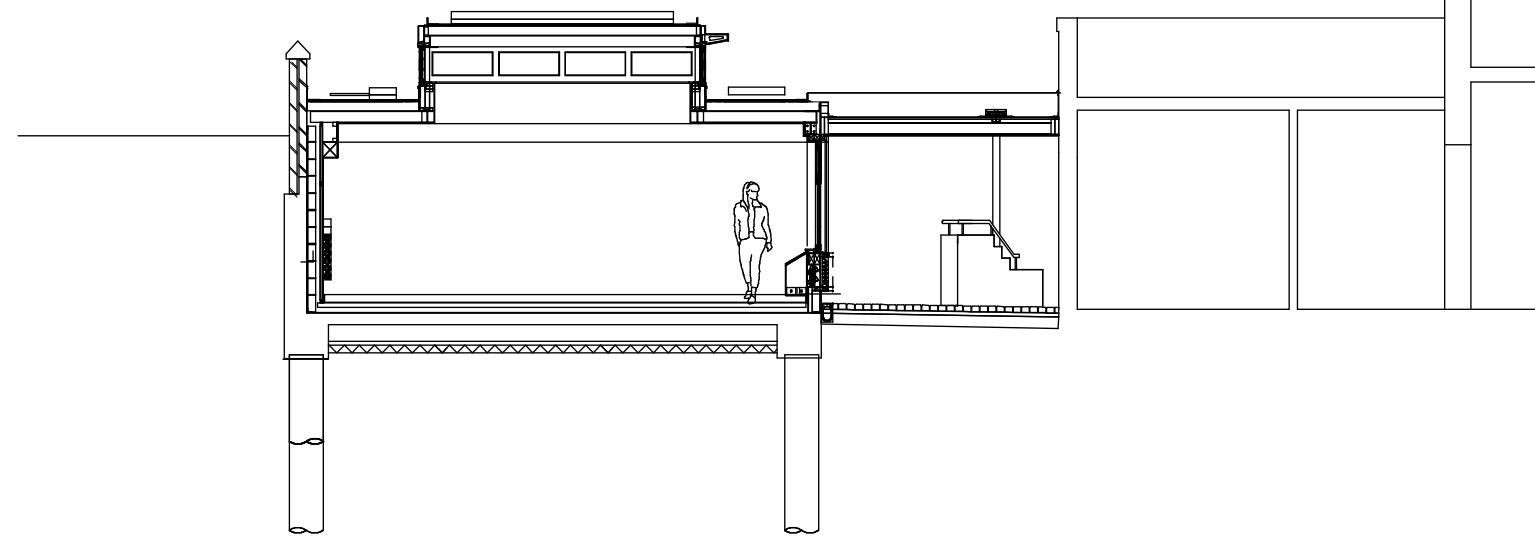
January 2020

Drwg No. 2026 / GE / 001 -

Scale 1:100 @ A3



Section AA: Reception Classroom



Section BB: Classroom & "Link" area



ed tooveyarchitects

studio 401 royle building
31 wenlock road
london n1 7sh
07880 725763
edtoovey@yahoo.co.uk

Revisions:

PLANNING ISSUE

- Always take site measurements
to verify dimensions
- Refer to M&E Engineers
drawings for all services

St. Christopher's School: Reception Classrooms Project

Section AA_BB existing

January 2020

Drwg No. 2026 / GS / 001 -

Scale 1:100 @ A3