

Green Roof Build Up:

- Roof waterproofing specification to be provided by main contractor - Bauder SBS modified bitumen membrane
- Root Barrier - ZinCo Root Barrier WSF 40
- Protection Layer - ZinCo Moisture Retention / Protection Mat SSM 45 - Weight: ca. 470 g/m²
- Drainage Layer - Floradrain FD 25-E - Weight: ca. 1.9 kg/m²
- Filter Layer - Filtersheet 'FS' - Weight: ca. 100 g/m²
- Substrate - ZinCo System Substrate "Rockery Type Plants"
- Vegetation to be biodiverse wildflower meadow - Pictorial Meadows 'Botanical Skyline' Meadow Turf (Sedum represent maximum 20% of turf mix when planted)
- Vegetative barrier (300mm width) - Roofing pebbles (20/40mm) at roof perimeters, in areas of upstands, around penetrations, inspection chambers, fixing devices and similar.
- ZinCo Gravel Retainer KL100/120 - aluminium edging to retain the inside edge of vegetative barrier. Roof parapet to retain outer edge.

Biodiverse Wildflower Meadow Turf

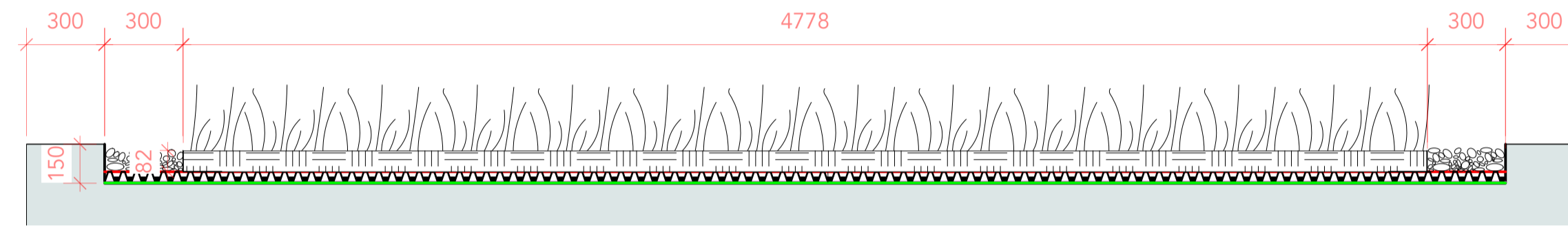
- Pictorial Meadows 'Botanical Skyline' Meadow Turf
- 27 core species with 150 plants/m²
- Sedum represent maximum 20% of turf mix when planted
- Core species - Achillea millefolium, Allium schoenoprasum, Alyssum saxatile, Anthemis tinctoria, Armeria maritima, Campanula rotundifolia, Daucus carota, Dianthus carthusianorum, Echinacea purpurea, Festuca amethystina, Festuca longifolia, Leucanthemum vulgare, Linaria purpurea, Linaria vulgaris, Linum perenne, Lychnis coronaria, Malva moschata, Oenothera missouriensis, Origanum vulgare, Petrorhagia saxifraga, Pilosella aurantiaca, Prunella vulgaris, Pulsatilla vulgaris, Sedum acre, Sedum album, Sedum reflexum, Silene maritima

Irrigation/Watering

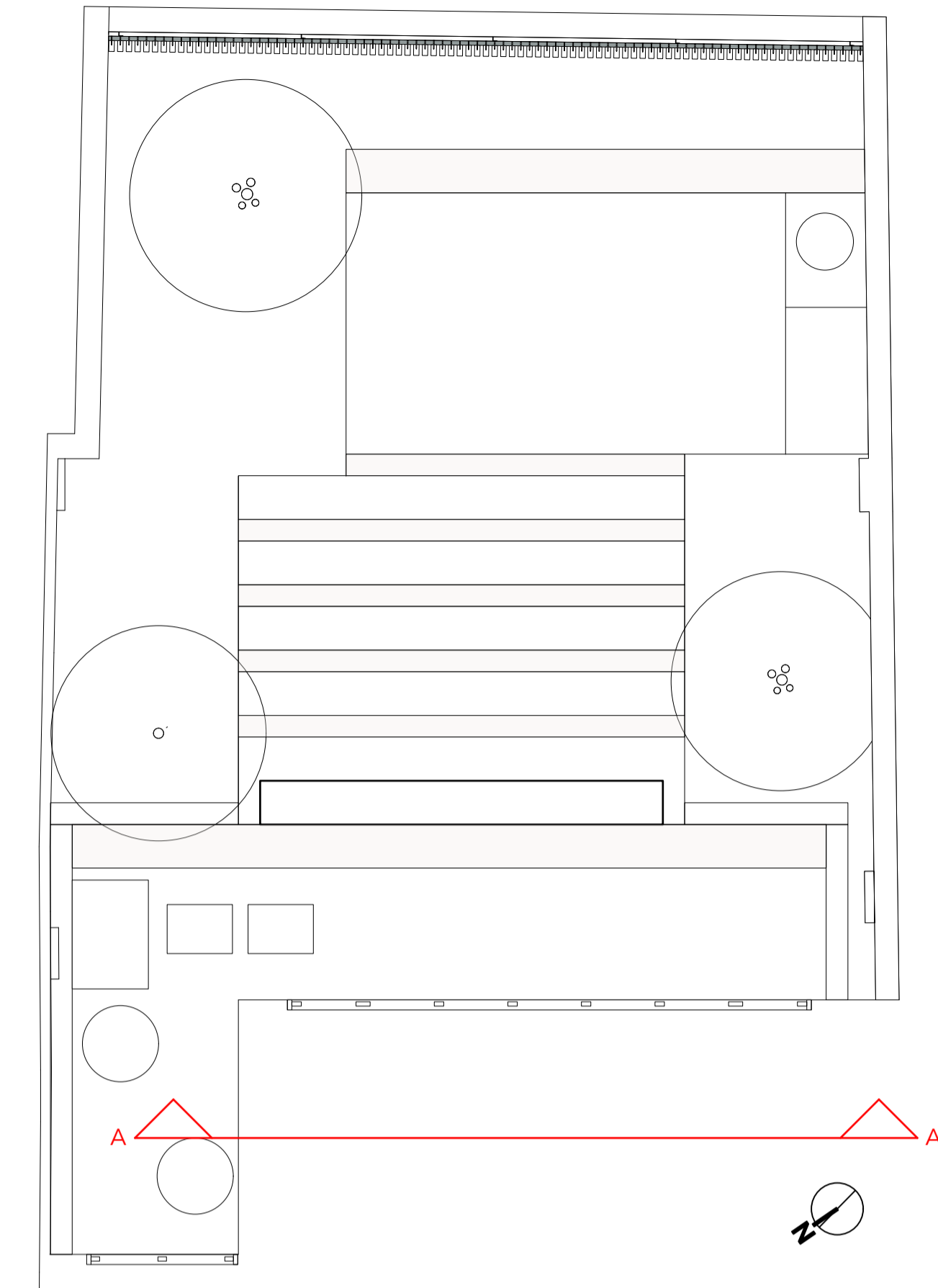
- Thorough irrigation after planting.
- Other early irrigations as required depending on the weather. Vegetation has to be watered and kept moist for a minimum of 3 to 4 weeks.
- Irrigation required for first year of establishment, once established the green roof will need minimal irrigation other than during prolonged hot and dry weather (for example, 4 weeks with no rain or prolonged periods with limited rain)

Maintenance

- Green roof wildflower meadow to have appropriate management with a single cut in late winter and a minimum of quarterly maintenance visits for weed management. This ensures maximum habitat provision during the year, removal of winter cut reduces fertility and so boosts biodiversity. The density of planting within the meadow turf results in fewer niches for weed encroachment and a layered approach to the species selection ensures good coverage and little bare soil. Treating the roof as a hay meadow with a cut and removal once a year will ensure a maximum number of plant species within the meadow, provide habitat for invertebrates, birds and mammals along with an extended season of pollen and nectar for insects.

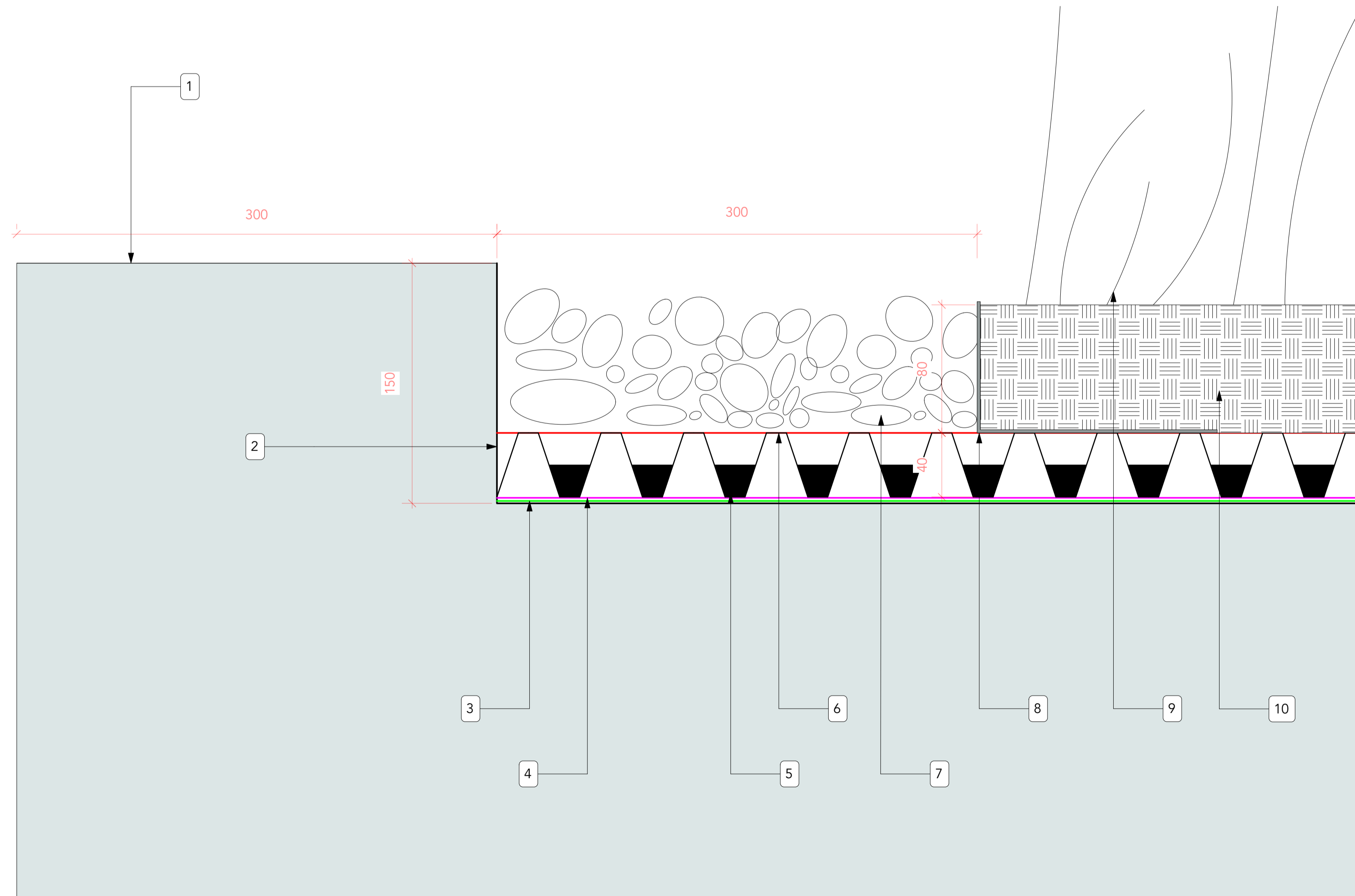


1 **Green Roof Section A-A**
Scale: 1:20



Green Roof Details Key

1. Roof upstand
2. Waterproofing - Bauder SBS modified bitumen membrane
3. Protection Layer - ZinCo Protection Mat SSM 45
4. Root Barrier - ZinCo Root Barrier WSF 40
5. Drainage Layer - ZinCo Floradrain FD 40-E
6. Filter Layer - ZinCo Filtersheet FS
7. Firebreak - Rounded pebbles to 300mm width
8. Retaining Edge - ZinCo Gravel Retainer Aluminium
9. Vegetation - Pictorial Meadows 'Botanical Skyline' Meadow Turf
10. Substrate - ZinCo 'Rockery Type Plants' Substrate



2 **Green Roof Section Detail**
Scale: Half Actual Size

<p>This drawing should not be scaled. Any dimensions to be verified on site. Any discrepancies or omissions to be referred to the designer prior to work beginning. The drawing is the property of Harry Holding Garden Design Ltd. and should not be copied, or disclosed to any unauthorised person, without the consent of Harry Holding.</p>	
Notes	
Amends A-Original	
Title Green Roof Details and Specification	
Project 19 Steeles Road	
Client Louise & Gregg Scott	
Paper Size and Scale 1:20 & 1:2 @ A1	Date 12_07_24
Drawn By AH	Checked By HH
<p>Contact Details Email: studio@harryholding.co.uk Tel: +44 (0) 207 0888 223 www.harryholding.co.uk</p>	
<p>Drawing Number P193_HHS_SR_301_P1</p>	