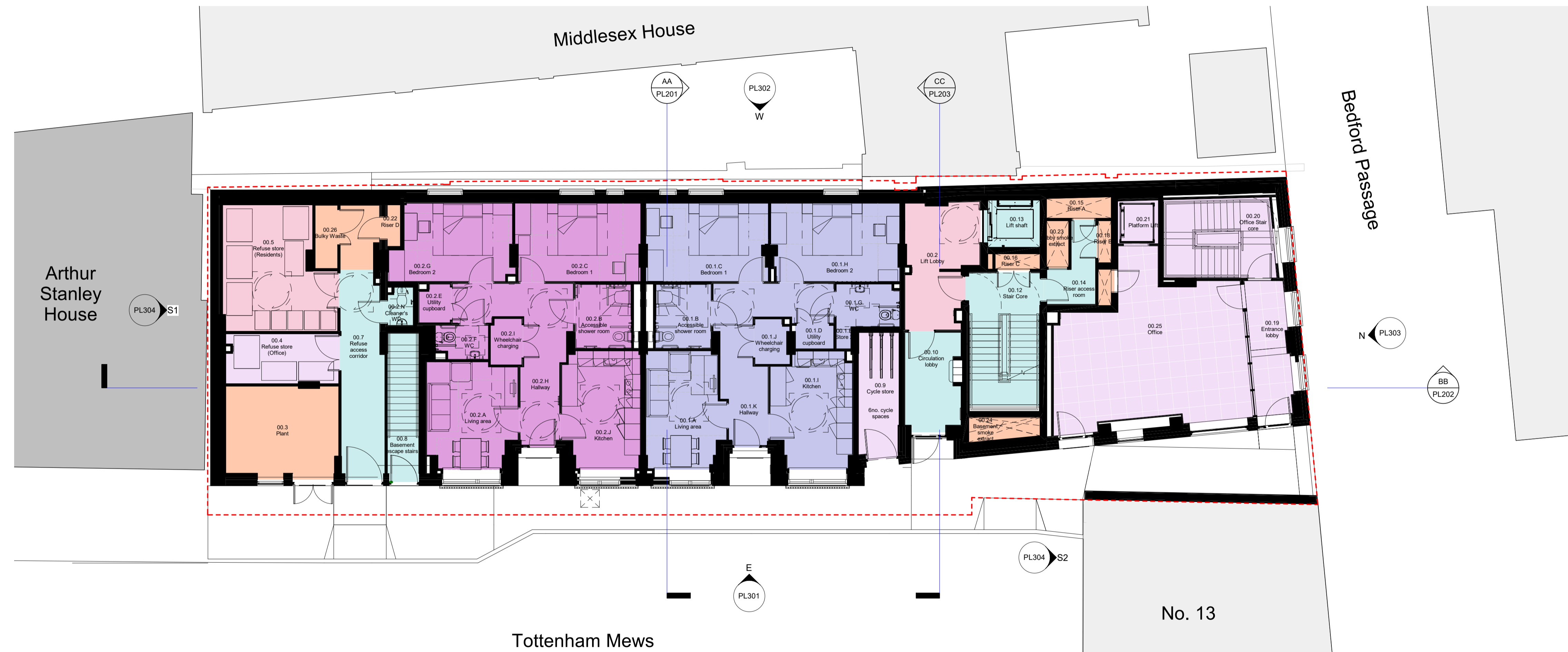


Department Legend

- Circulation
- Communal
- Flat 00.1 (2b4p)
- Flat 00.2 (2b4p)
- Office
- Plant



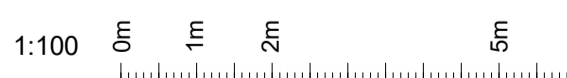
**General Notes:**  
 A FULL Planning application, reference: 2020/5633/P, was consented on 12 April 2022 for the following works:  
 Erection of a six storey building (and basement) to provide office (use Class E) at part ground and basement levels and self-contained flats (use class C3) at ground and floors one to five, with associated landscaping, cycling parking and enabling works.

Original Architect - Piercy&Company  
 Non-Material Amendment application made by Cottrell&Vermeulen Architecture Ltd on behalf of Glenman Corporation Limited for Origin Housing Association.

Revisions

Rev. no.	Date	Description
P01.1	24/05/2023	For information
P01.2	18/08/2023	NMA Application
P01.3	18/08/2023	NMA Application (annotated)
P01.4	02/04/2024	NMA Application
P01.5	02/04/2024	NMA Application (annotated)
P01.6	08/07/2024	NMA Application

00 Proposed Ground Floor  
 1 : 100



WIP  
 COTTRELL & VERMEULEN ARCHITECTURE  
 18 Little Street, London SE17 3LJ, 0207 708 2567  
 Do not scale from this drawing. Confirm all dimensions on site.

Drawing Number	Rev.	Status
2960-CVA-TM-00-DR-A-PL102	P01.6	

14-19 Tottenham Mews

Proposed Ground Floor Plan

Drawn by:	MS	Checked by:	RC	Date:	
Scale:	1 : 100	Size:	A1	08/07/2024	