



Notes

This drawing is copyright Piercy&Company. Do not scale from this drawing. All dimensions and levels to be checked on site by the contractor and such dimensions to be his responsibility. Report all drawing errors, omissions and discrepancies to the architect.

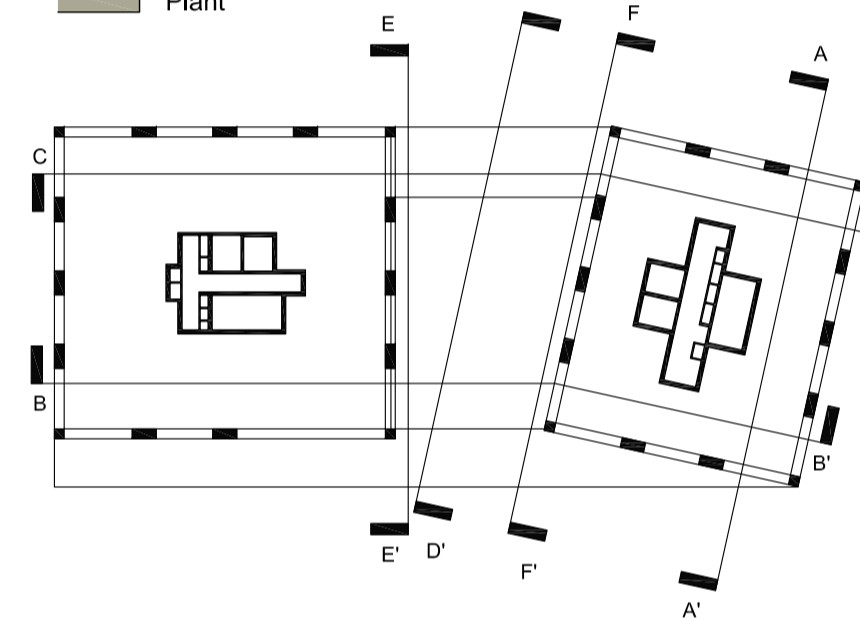
DISCLAIMER

This document may be issued in an editable digital CAD format to enable others to use it as background information to make alterations and/or additions. In that instance the file will be accompanied by a PDF version as a record of the original file. It is for those parties making such alterations and/or additions to ensure that they make use of current background information.

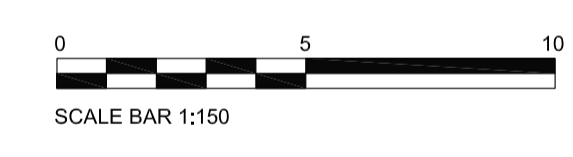
Piercy&Company accepts no liability for either: any such alterations and/or additions to the background information by others; or any other changes made by others to the architectural content of the background information itself.

Drawing to be read in conjunction with all other design team information.

- KEY**
- 1 Bed MH
 - 1 Bed
 - 2 Bed
 - 3 Bed
 - Retail A1/A3
 - Office
 - Workshops
 - Concierge / Lobby / Residents Facilities
 - Circulation
 - Studio
 - Gym
 - Pool
 - Gym Facilities
 - Cinema
 - Refuse / Bike store
 - Plant



Rev	Date	Description
P03	25.09.23	NMA
P02	06.09.22	NMA
P01	10.07.20	Planning
A	02.10.17	Planning Amendments
-	30.06.17	Planning Issue



CGYA0 Camden Goods Yard

Client
St George West London Limited

Date of First Issue 03/11/20 Scale As indicated at A1

Drawing Title
Block A - Section C-C

Drawn LM Checked AH Approved DC

PLANNING

Project	DISC	BLOCK	LEVEL	SERIES	Dwg No.	Rev.
13508	AR		LXX	05	153	P03

The Centro Building
39 Plender Street
LONDON NW1 0DT
Telephone
+44 (0)207 4249611

info@piercyandco.com
www.piercyandco.com

Piercy&Company