

NOTE : THIS DRAWING CONTAINS ELEMENTS THAT HAVE BEEN DERIVED FROM ORIGINAL SURVEY INFORMATION. THE ORIGINAL SURVEY INFORMATION USED IN DEVELOPMENT OF THE INFORMATION CONTAINED WITHIN THIS DRAWING WAS SURVEY SOLUTIONS Ltd DRAWING No. 42611BWLS-02 (06/07/2022).

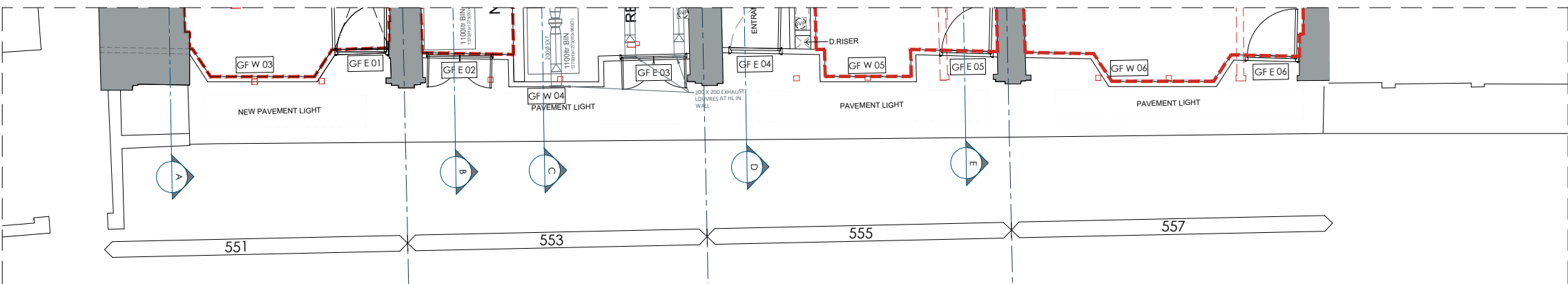
BCRi ARCHITECTS SHOULD BE INFORMED IMMEDIATELY SHOULD ANY ON SITE DISCREPANCIES BE OBSERVED ALONGSIDE THESE DRAWINGS.

NOTE : FOR LEVELS OF WINDOW CILL & WINDOW HEAD REFER TO SURVEY SOLUTIONS Ltd DRAWING No. 42611BWLS-02 (06/07/2022).

NOTE : ALL STRUCTURAL OPENINGS TO BE CHECKED ON SITE. DEVELOPMENT OF FINAL SHOP FRONT DETAILS TO BE DEVELOPED WITH SPECIALIST SUB CONTRACTOR

NOTE : THIS INFORMATION IS PRELIMINARY UNTIL THE ASSOCIATED PLANNING CONDITIONS HAVE BEEN DISCHARGED

NOTE : MEP TO ADVISE ON PRECISE LOCATION OF ANY VENTILATION GRILLES / REQUIREMENTS IN THE LOCATION OF THE SHOPFRONT INSTALLATION. THESE LOCATIONS ARE TO BE DISCUSSED WITH PLANNING AS PART OF THE CONDITIONS DISCHARGE

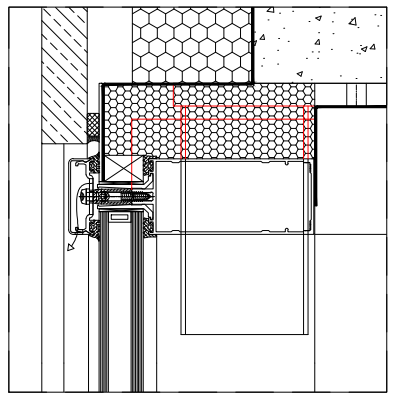


1 PROPOSED - SHOP FRONT GA  
Scale: 1:100

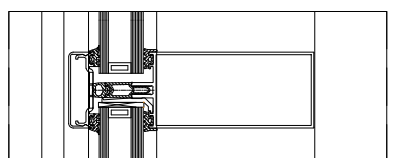


2 PROPOSED - SHOP FRONT ELEVATION  
Scale: 1:100

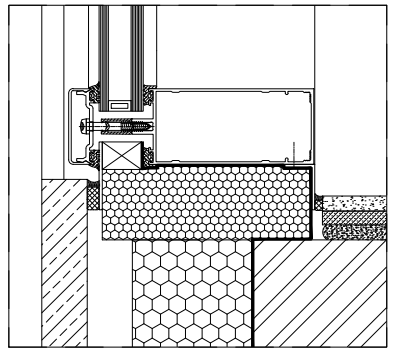
- SHOPFRONT KEY:
- ① SHOPFRONT GLAZING SYSTEM
  - ② GLAZED PANEL
  - ③ EXTERNAL DOOR (GLAZED)
  - ④ EXTERNAL DOOR (LOUVRED)
  - ⑤ METAL PLINTH



3 SHOPFRONT HEAD RAIL  
scale 1:5



4 SHOPFRONT MID RAIL  
scale 1:5



5 SHOPFRONT CILL  
scale 1:5

**SHOPFRONT SPECIFICATION**

**Shopfront Glazing system:**  
Type: 50mm Aluminium glazing system stick system.

**Internal framing member:**  
Material: Aluminium  
Finish: Polyester Powder coating  
Colour/ texture: RAL 7016  
Minimum film thickness: 40 Microns

**External cover cap:**  
Material: Aluminium  
Finish: Polyester Powder coating  
Colour/ texture: RAL 7016  
Minimum film thickness: 40 Microns

**Glazing:**  
Kite marked. Pre-double glazed hermetically sealed. All Glazing to be toughened to all doors and windows and where required for safety in accordance with BS 6262. Below 800mm everywhere, up to 1500mm and within 300mm of doors, to all doors generally and any areas considered to be at risk, over and above those shown on the window schedule due to inconsistent shading or orientation to solar paths

**Inner pane:** 6mm Pilkington Toughened Suncool 66/33 Pro T  
**Cavity:** 16mm Argon filled (90%) - Cavity with silver spacer bar  
**Outer Pane:** 8.8mm Pilkington Laminated Optilam Clear  
Product Code 6C(66)T-16Ar-8.8L  
Light Transmittance: 0.37  
Light Reflectance: 0.07  
Total Solar Radiant Heat Transmittance 0.31  
Total Shading Coefficient: 0.35

Thickness of glass to be confirmed / designed by Sub-Contractor. Glass to match Glazing system: Gaskets as clause 760 including a horizontal 'batman' gasket fitted into the nose of the member. Pressure plate fixed standard units

**Look-a-like panels:**  
External material: 6mm Toughened Pilkingtons Mid grey background coloured float glass.

External finish: 6mm Toughened Pilkingtons Mid grey background coloured float glass. TBC  
Internal material: RAL 7004 Intepon D1036-SLI04 Gloss. TBC  
Internal finish: RAL 7004 Intepon D1036-SLI04 Gloss. TBC

**Accessories:**  
Matching pressed metal single or double skin, non-insulated and insulated flashings, cills inclusive of stopped ends, fixing cramps, EDPM gaskets etc complete with internal and external mastic type seal with compressible rod backing to both.

**Louvers:**  
Manufacturer: Renson, or equal approved suggested by Contractor.  
Product reference: Refer to manufacturer  
Material: Extruded Aluminium  
Finish: Polyester Powder Coated  
Colour/ texture: RAL 7040  
Minimum film thickness: 40 Microns  
Fixing: Glazed in louvre panel  
Other requirements: Blade pitch 20mm. Blade angle 45 deg. Ref to MEP consultant's spec and providing a free air flow of minimum 50% free area between blades. Centres of blades to be confirmed by MEP Consultant. Provide insect/bird mesh to rear of louvre prior to insulated blanking plate fixing. Insulated blanking to achieve 0.2W/m2K

U-value to rear as necessary once MEP connected/co-ordinated.

**Doors:**  
Glazed doors  
Proprietary door supplied by shopfront glazing manufacturer.  
Material: aluminium  
Finish: polyester powder coating  
Colour/texture: RAL 7016  
Glazing: as per scheduled specification

Louvered Doors  
Proprietary door supplied by shopfront glazing manufacturer  
Material: aluminium  
Finish: polyester powder coating  
Colour/texture: RAL 7016  
Louvres: as per scheduled specification

DO NOT SCALE THIS DRAWING - USE DIMENSIONS  
The Contractor is to check and verify all dimensions on site before starting work and report any omissions or errors. This drawing is to be read in conjunction with all relevant consultants and specialists drawings. This drawing is copyright

This drawing is issued for the sole and exclusive use of the named recipient. Distribution to any third party is on the strict understanding that no liability is accepted by bcr-infinity architects for any discrepancies, errors or omissions that may be present, and no guarantee is offered as to the accuracy of information shown.

Revisions  
A- PLANNING ISSUE 24/05/24 CP  
B- UPDATED TO REFLECT COMMENTS 03/06/24 CP

Drawing Title  
PROPOSED - SHOPFRONT SCHEDULE  
Project  
551-557 FINCHLEY ROAD

Client  
GLENCAR CONSTRUCTION LTD  
CAD Reference: 22-055-A-620

Drawing Number  
22-055-A-620  
Scale  
1:5  
Date  
May 2024  
Drawn by: CP  
Checked by: JH

PLANNING

bcr·infinityarchitects  
www.bcr-infinityarchitects.co.uk  
e: studio@bcr-infinityarchitects.co.uk  
Cambridge: 1 Wellington street T 01223 366717  
Bury St Edmunds: 8 Angel Hill IP33 1UZ T 01284 727710

RIBA Chartered Practice