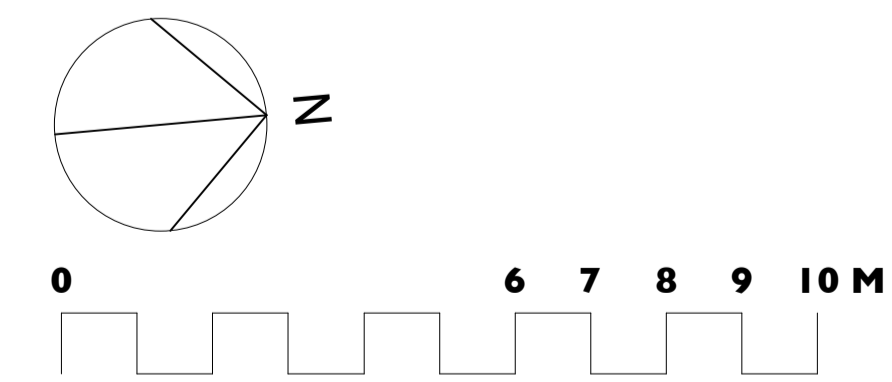
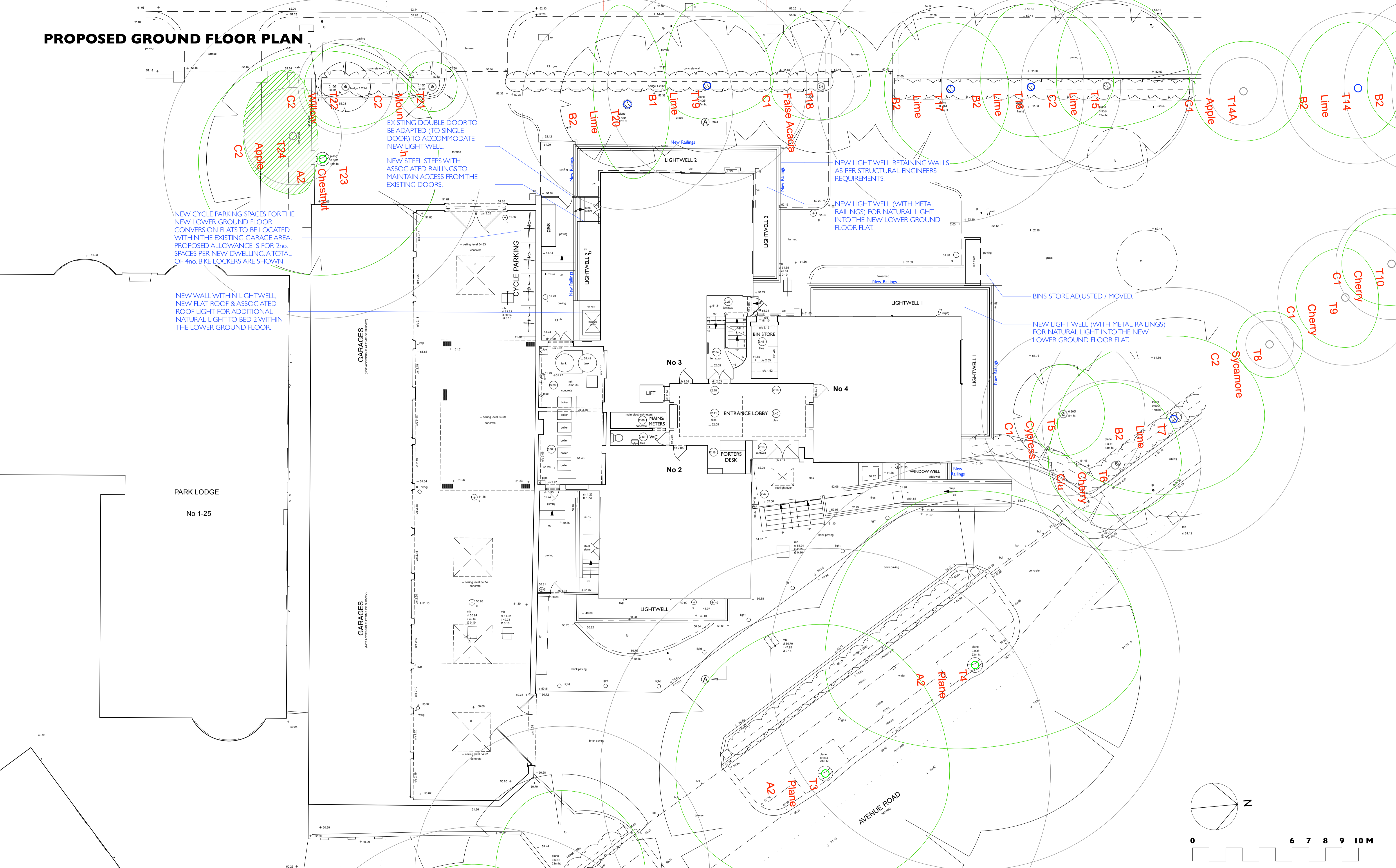


# PROPOSED GROUND FLOOR PLAN



Unit 25, BASEPOINT  
EVESHAM  
WORCESTERSHIRE  
WR11 1GP  
t : 020 7328 2576  
Email: info@hubarchitects.co.uk

All dimensions are to be checked on site before commencement of works.  
All sizes and dimensions to any structural elements are indicative only. See structural engineer's drawings for actual sizes/dimensions.  
Sizes of and dimensions to any service elements are indicative only. See service engineer's drawings for actual sizes/dimensions.  
This drawing to be read in conjunction with all relevant Architect's drawings, specifications and other consultants' information.

Rev.	Date.	Description.
A	2208-09	General drawing update, Landmark Trees RPA info added.
B	2211-01	General drawing update.
C	2302-16	General drawing update, cycle parking shown.
D	2305-03	General drawing update, roof light added to lightwell 2.

Initial.  
JC  
JC  
JC  
JC

## PLANNING

Project: 95 Avenue Road, London, NW8 6HY	Drawing: Proposed Ground Floor Plan
Scale: 1:100 @ A1 & 1:200 @ A3	DWG: 1289 - PP2 - 104
Date: Jan 2021	Revision: <b>D</b>