

Belgrove House

1.1 Picture Windows to North Elevation EWS-02 A

The large north-facing picture windows are built as a timber stick system with a laminated oak internal structure, supported with additional secondary steel structure in the lower spandrel and at mid height. This system glazed with the typical specification DGU.

Externally, the mullions and transoms have anodized aluminium cover caps and the spandrels are realised in folded stainless steel.

The soffit, above the main entrance is a timber system treated for compliance with BS EN 13501-1, meeting the requirements of Class B-s3 d2.



Scope



- ① Soft landscaping planter
- ② Stainless Steel Spandrel Panels
- ③ Stick system glue laminated oak framing structure with anodized aluminium capping externally
- ④ Typical DGU
- ⑤ Brickwork Panels (refer to chapter 9)
- ⑥ Secondary Steel Support Structure
- ⑦ Timber Soffit

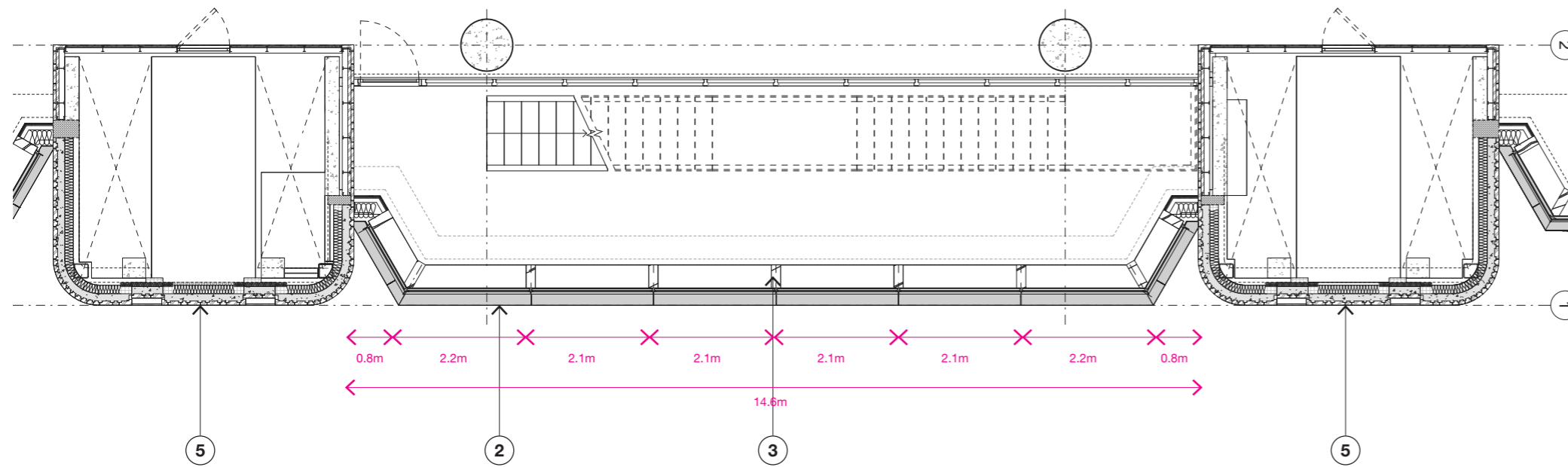
Materials Overview



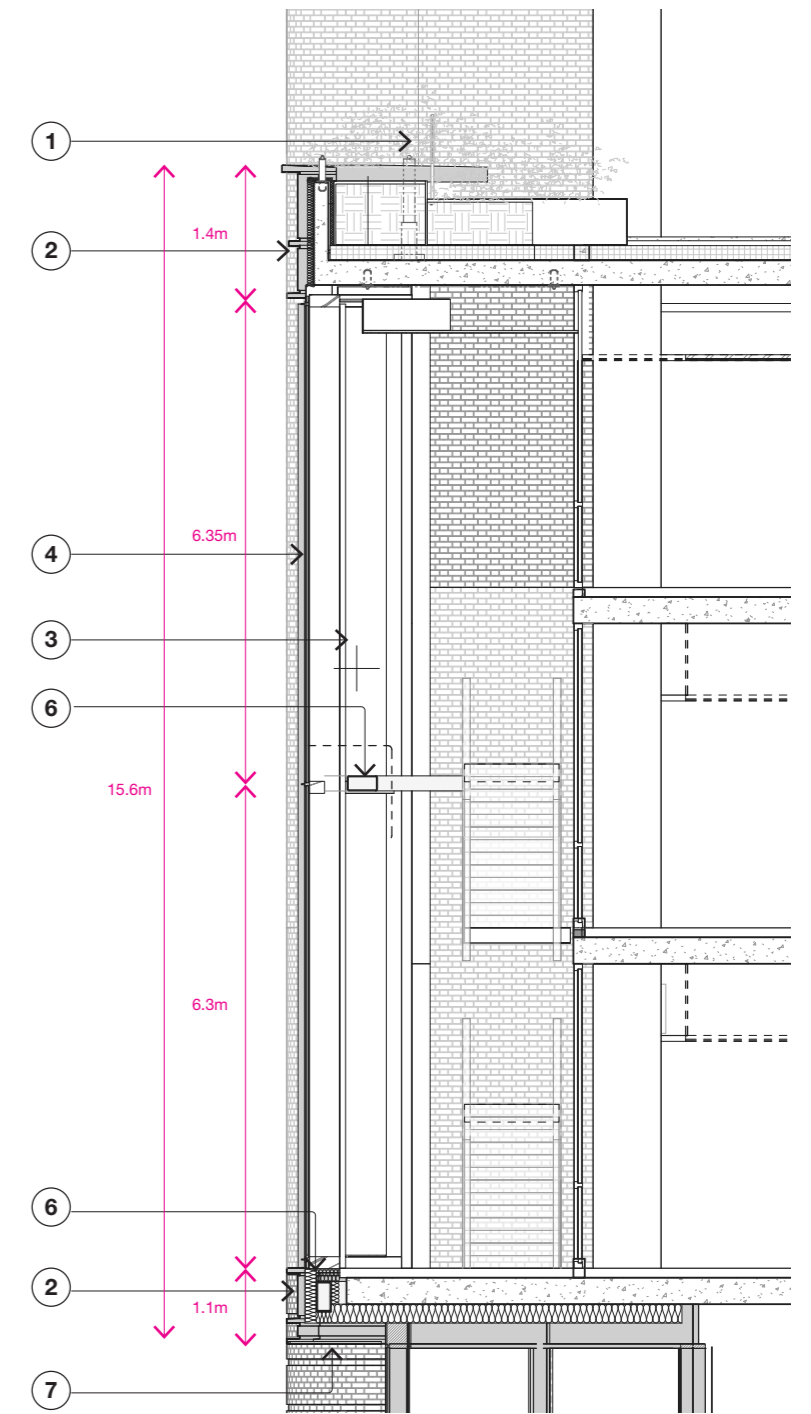
Belgrove House

1.1 Picture Windows to North Elevation EWS-02 A

- ① Biophilia - Deep planters at Terrace Level maintained from L04
- ② Stainless Steel Spandrel Panels
- ③ Stick system glue laminated oak framing structure with anodized aluminium capping
- ④ Typical DGU
- ⑤ Brickwork Pier (refer to chapter 9)
- ⑥ Secondary Steel Support Structure
- ⑦ Timber Soffit



Plan 1:50 @ A1

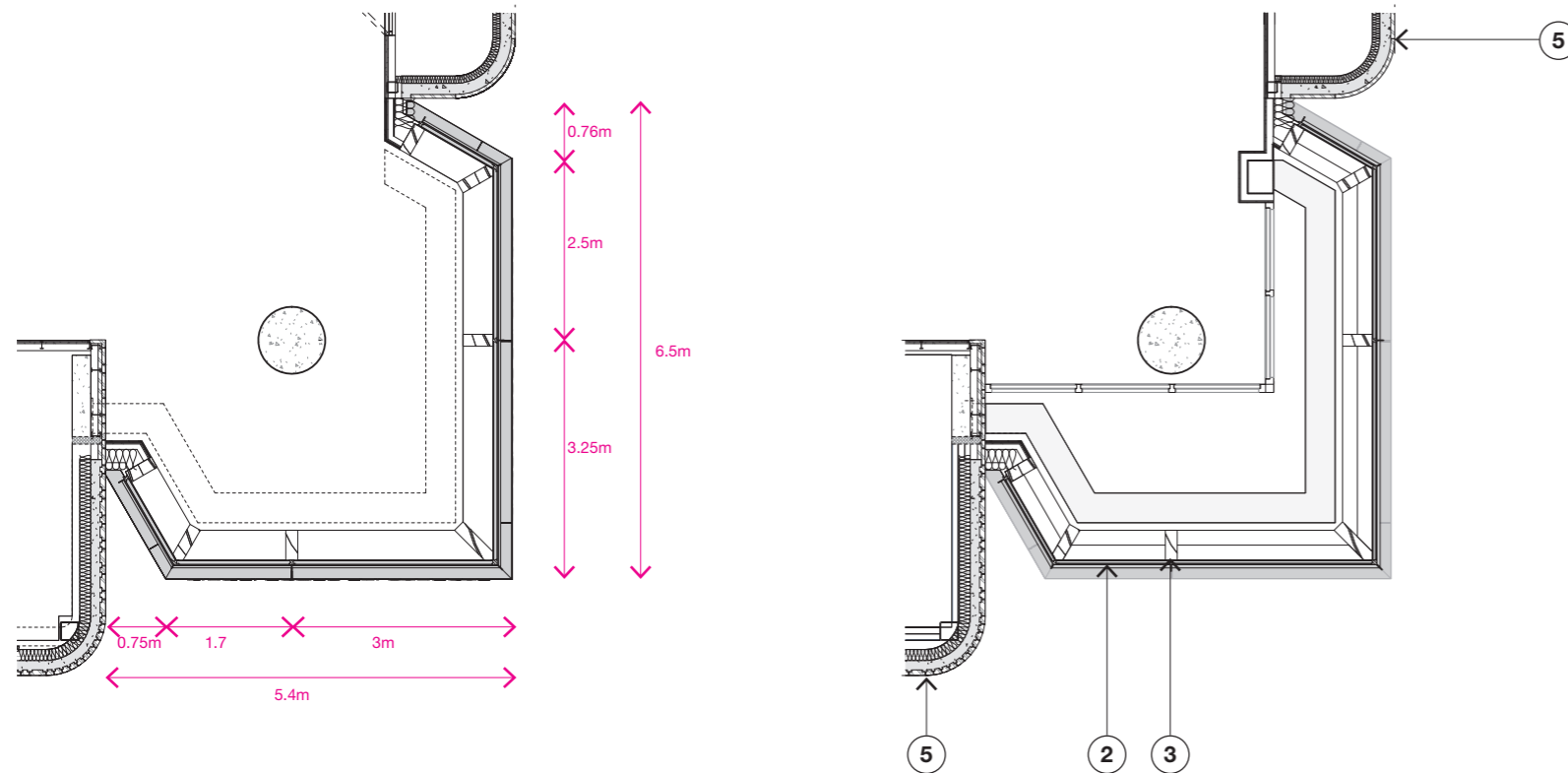


Section 1:50 @ A1

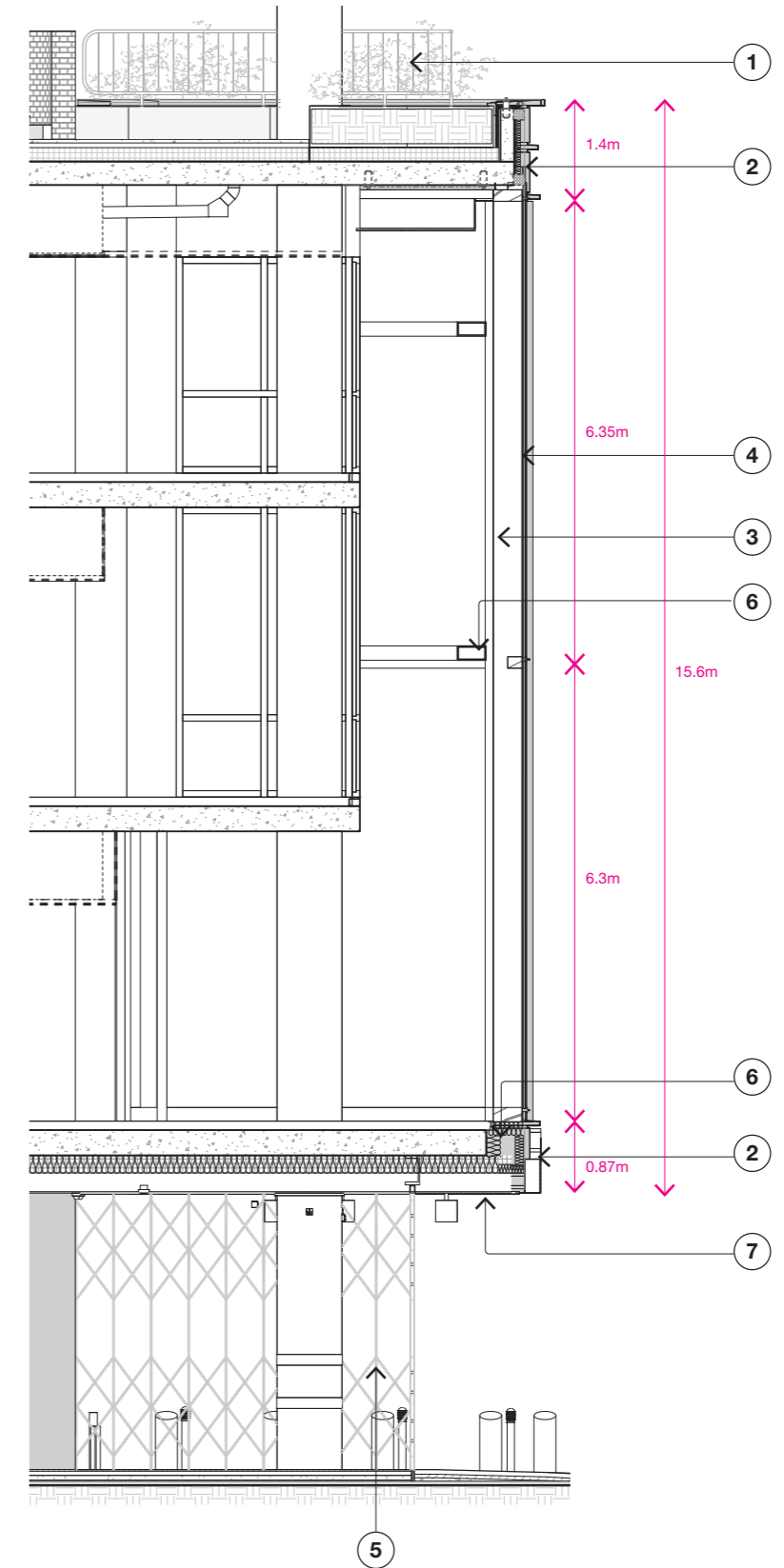
Belgrove House

1.1 Picture Windows to North Elevation EWS-02 A

- ① Biophilia - Deep planters at Terrace Level maintained from L04
- ② Stainless Steel Spandrel Panels
- ③ Stick system glue laminated oak framing structure with anodized aluminium capping
- ④ Typical DGU
- ⑤ Brickwork Pier (refer to chapter 9)
- ⑥ Secondary Steel Support Structure
- ⑦ Stainless Steel Soffit



Plan 1:50 @ A1



Section 1:50 @ A1

Belgrove House

1.2 Typical Oriel Bays EWS-02 B

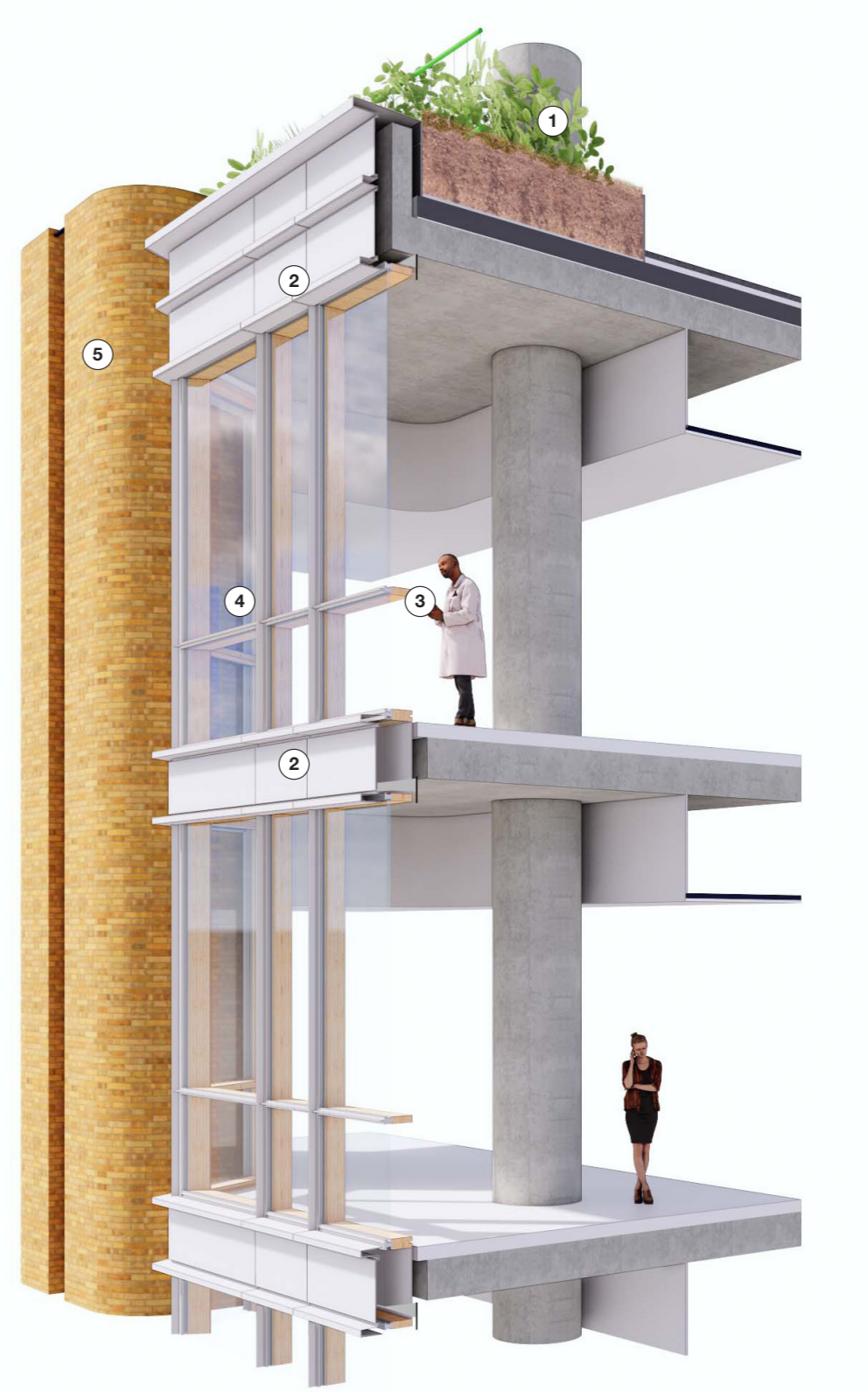
This is a timber unitised system, realised with a laminated oak internal structure and glazed with the typical specification DGU.

Externally the mullions and transoms have anodized aluminium T shaped cover caps designed to add visual depth and sharpness to the glazing. The spandrels are realised in folded stainless steel which will pick up the light and the context providing depth and reflectivity to the spandrel zones.

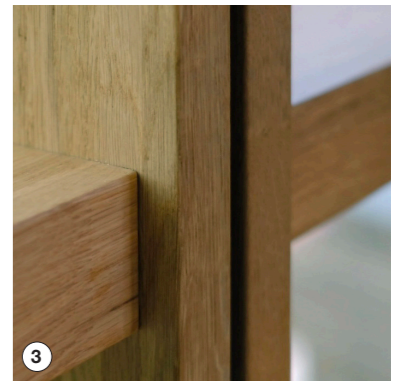
Each bay is assembled from three sections per level, each section is factory finished and pre glazed in Germany before being fixed in place and sealed to the adjacent structure and precast panels on site.



Scope



- ① Biophilia - Deep planters at Terrace Level maintained from L04
- ② Stainless Steel Spandrel Panels
- ③ Unitised glue laminated oak framing structure with anodized aluminium capping externally
- ④ Typical DGU
- ⑤ Brickwork Panels (refer to chapter 6)

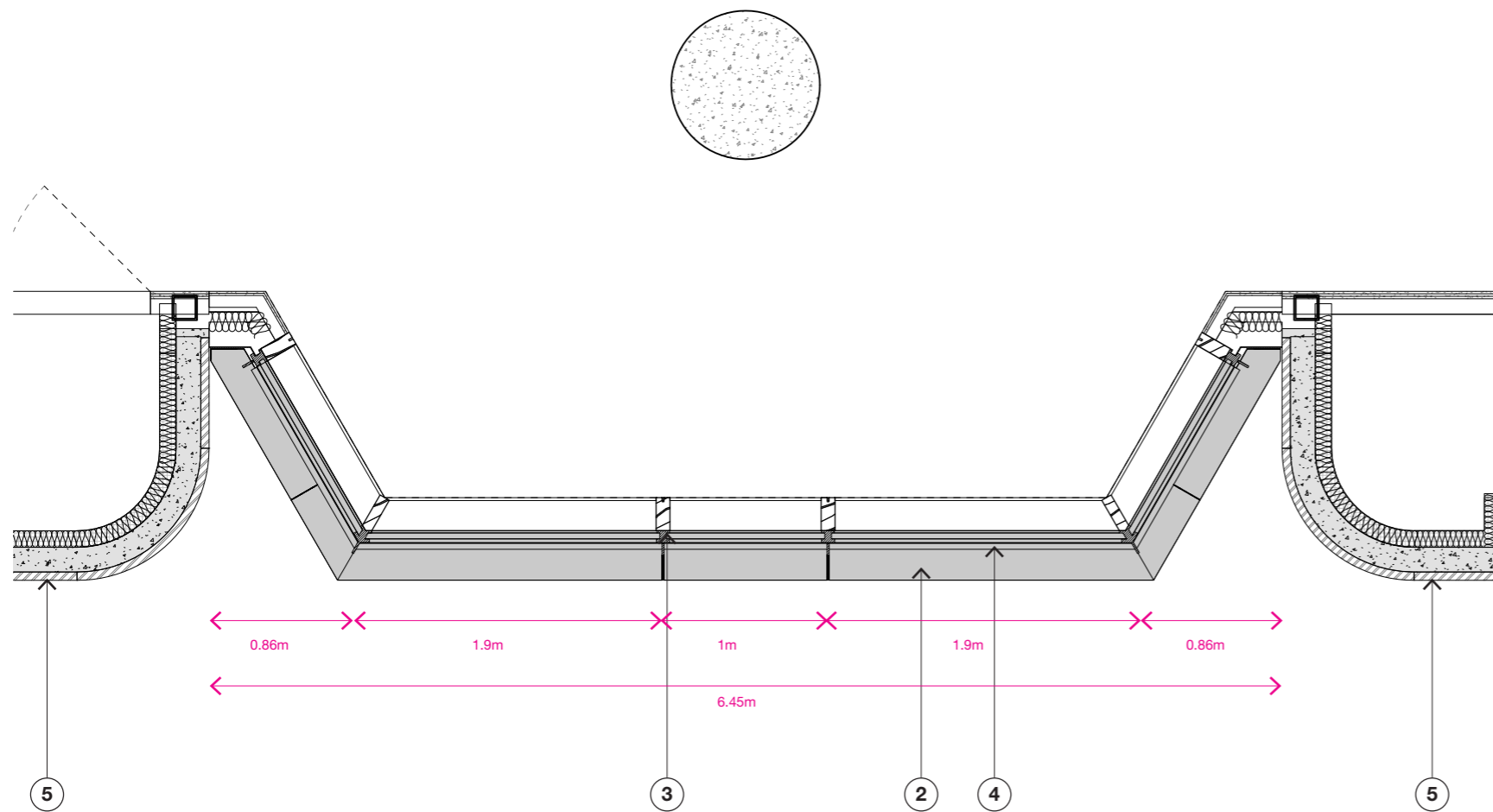


Materials Overview

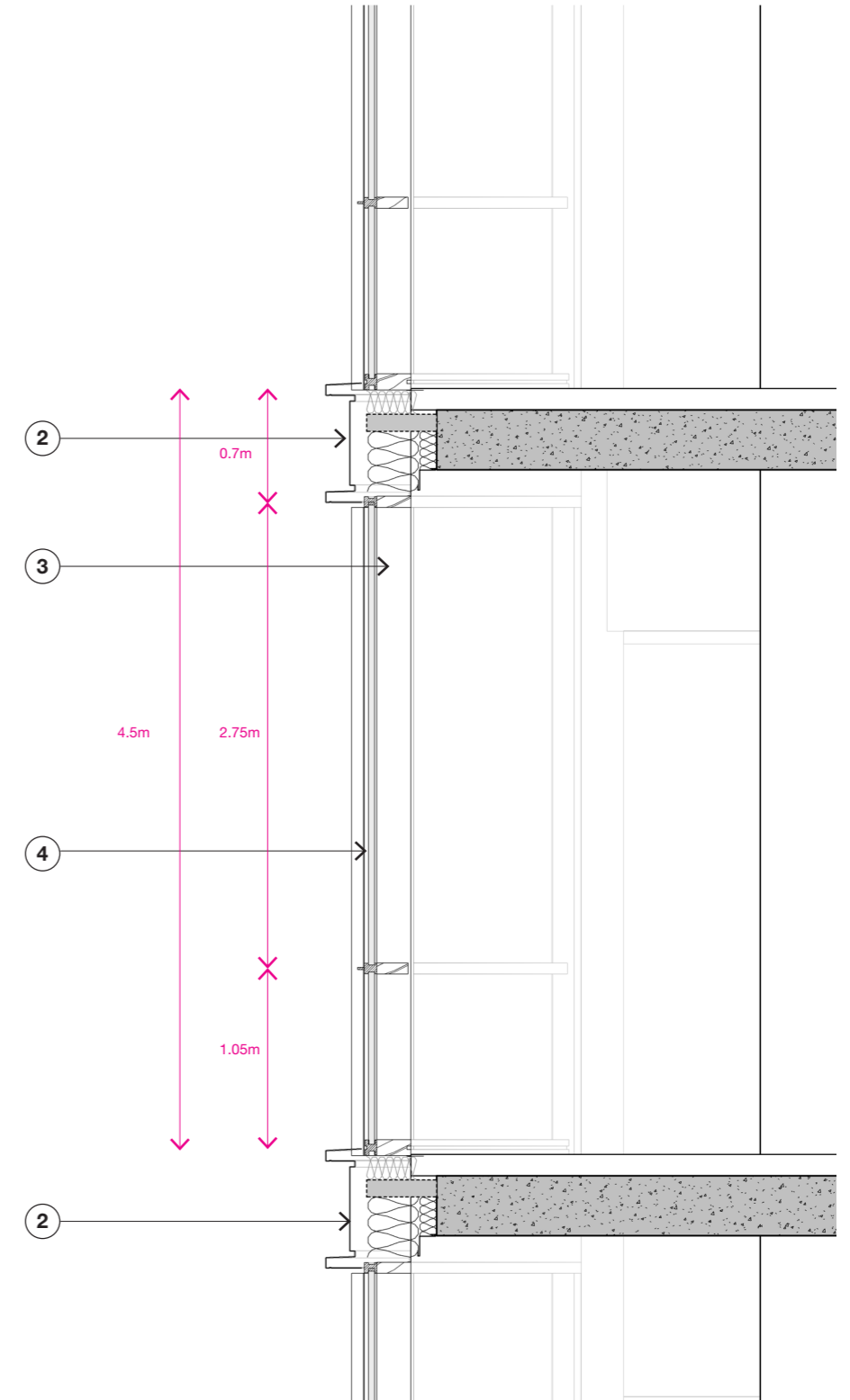
Belgrove House

1.2 Typical Oriel Bays EWS-02 B

- ① Biophilia - Deep planters at Terrace Level maintained from L04
- ② Stainless Steel Spandrel Panels
- ③ Unitised glue laminated oak framing structure with anodized aluminium capping externally
- ④ Typical DGU
- ⑤ Brickwork Pier (refer to chapter 6)



Plan 1:20 @ A1



Section 1:20 @ A1

Belgrove House

1.3 Recessed Glazing on Balconies EWS-02 C

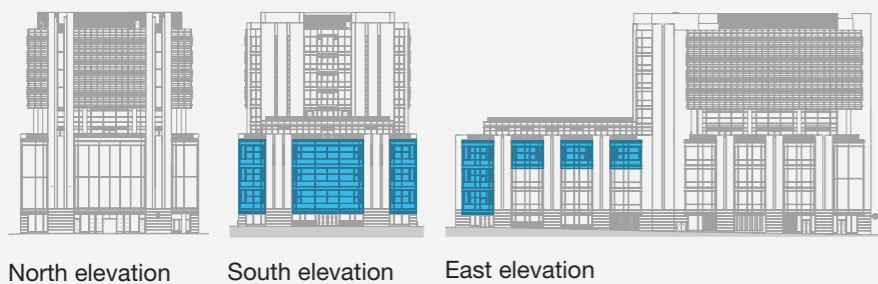
The inner skin which forms the thermal and weather line is a prefabricated pre glazed timber system, realised with a laminated oak internal structure supported between a saddle rail and the concrete soffit. It arrives to site glazed with the typical specification DGU.

Externally the mullions and transoms have anodized aluminium cover caps and the flashings are realised in folded stainless steel.

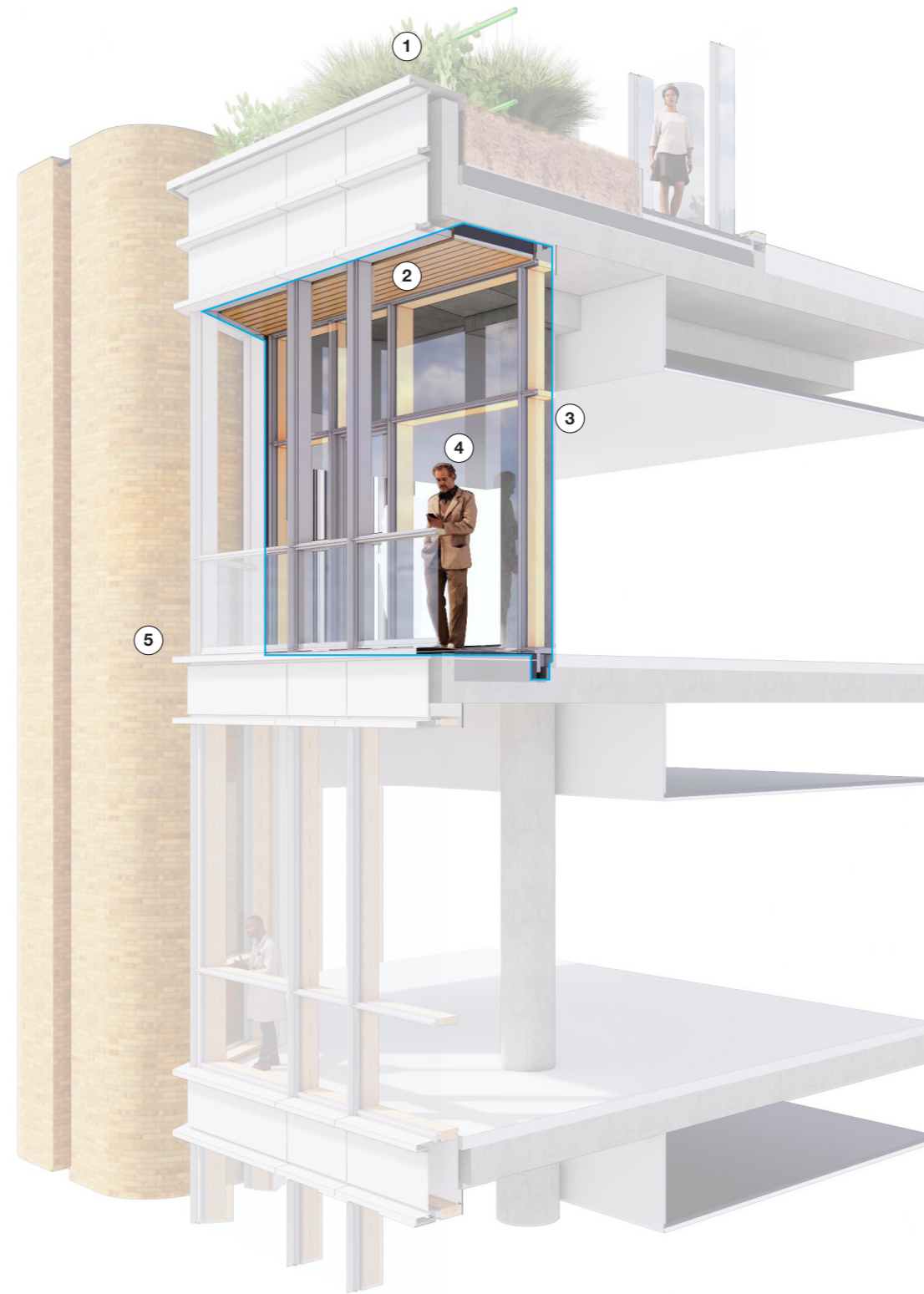
The soffit, above the main entrance is a timber system treated for compliance with BS EN 13501-1, meeting the requirements of Class B-s3 d2.

Each balcony bay is installed by assembling multiple prefabricated sections, each section is factory finished and pre glazed in Germany before being fixed in place and sealed to the adjacent structure and precast panels on site.

The external balcony assembly and balustrade is covered in chapter 5.2.



Scope



- ① Biophilia - Deep planters at Terrace Level maintained from L04
- ② Timber Soffit
- ③ Semi unitised glue laminated oak framing structure
- ④ Typical DGU
- ⑤ Brickwork Panels (refer to chapter 6)
- ⑥ Typical Oriel Bay (refer to chapter 1.2)
- ⑦ Eavestone Pavers
- ⑧ Stainless Steel Spandrel Panels

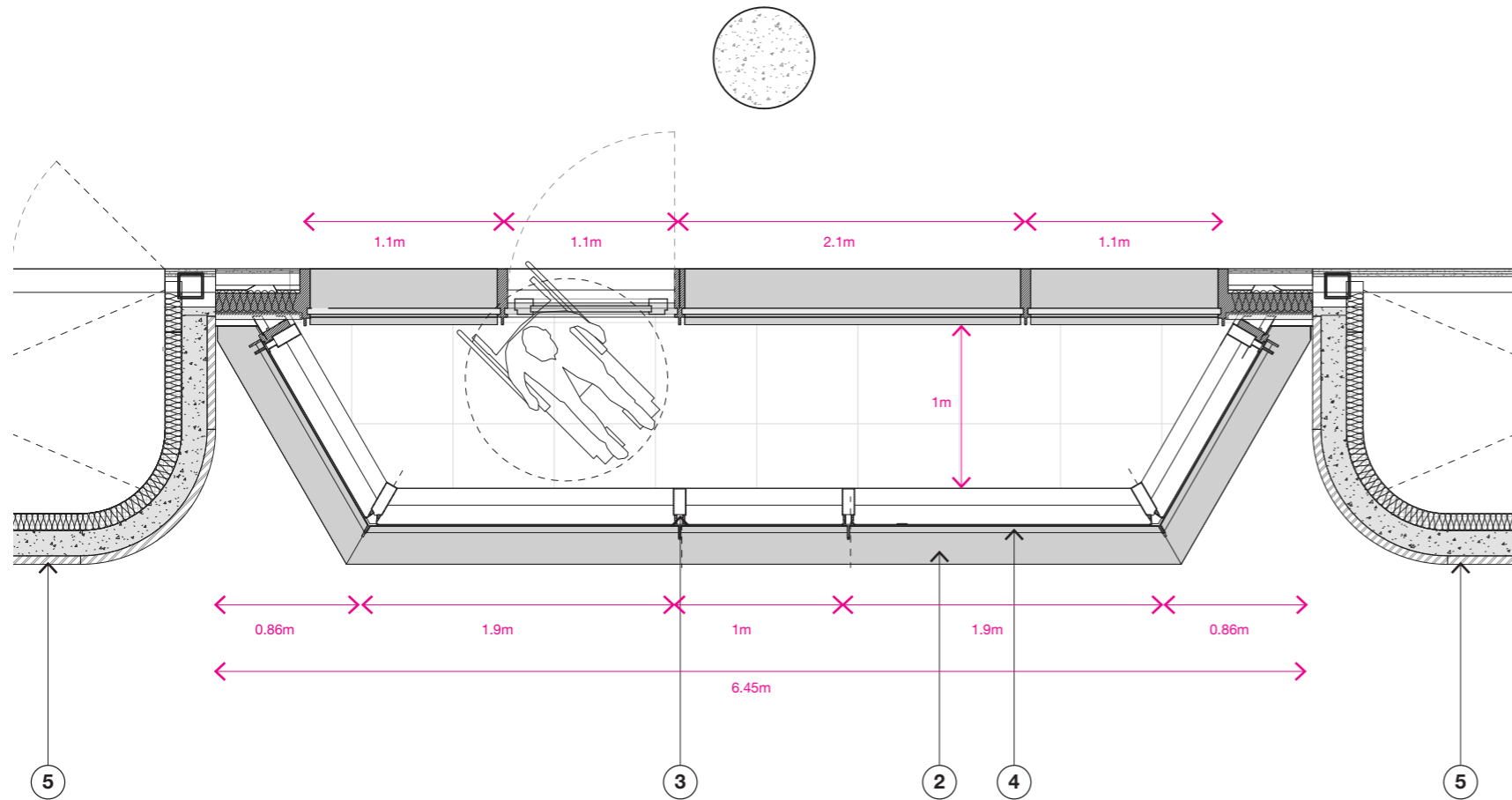


Materials Overview

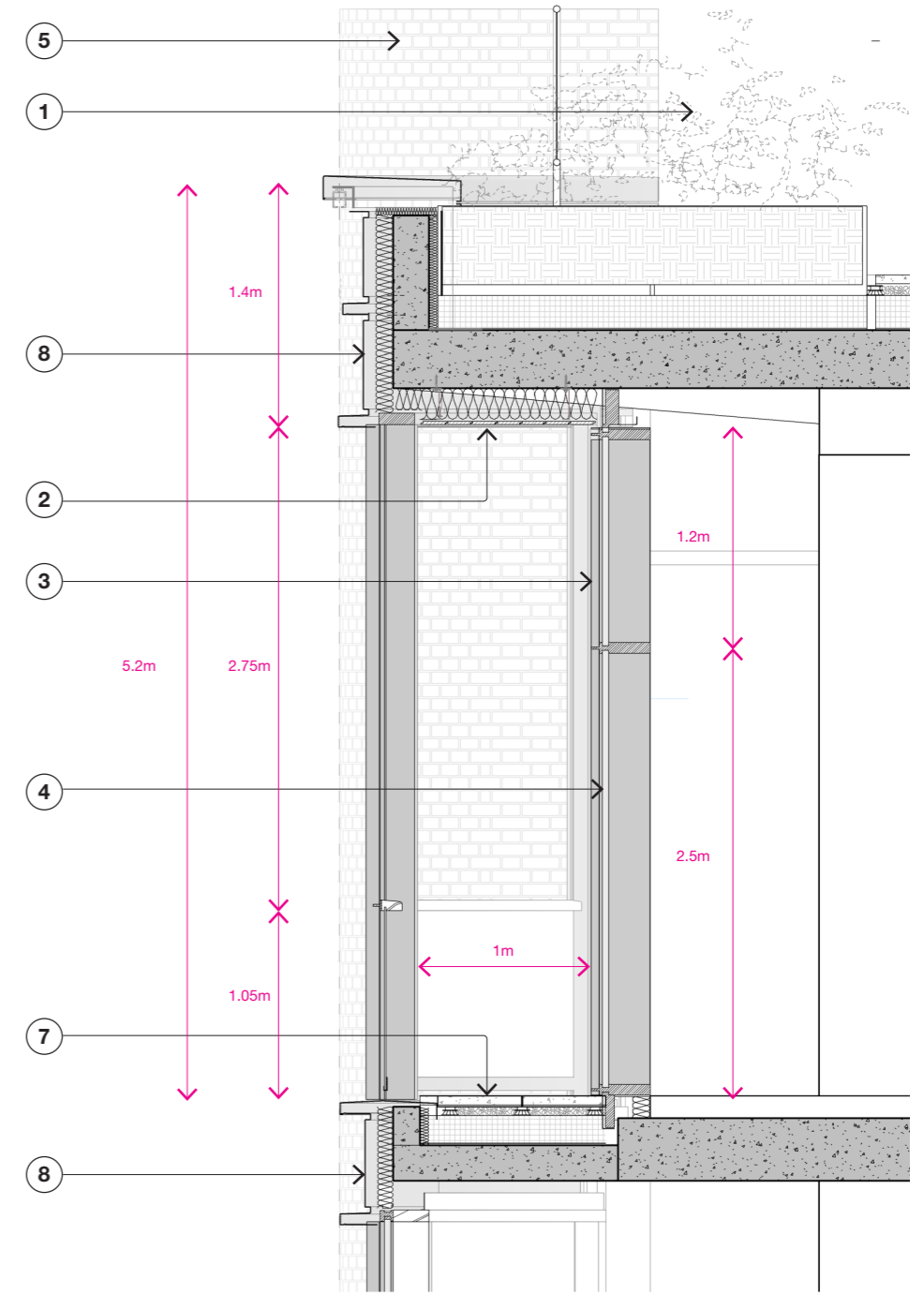
Belgrove House

1.3 Recessed Glazing on Balconies EWS-02 C

- ① Biophilia - Deep planters at Terrace Level maintained from L04
- ② Timber Soffit
- ③ Semi unitised glue laminated oak framing structure
- ④ Typical DGU
- ⑤ Brickwork Pier (refer to chapter 6)
- ⑥ Typical Oriel Bay (refer to chapter 1.2)
- ⑦ Terrace Pavers
- ⑧ Stainless Steel Spandrel Panels



Plan 1:20 @ A1



Section 1:20 @ A1