

Planning Statement - NIMA

25-26 Hampstead High Street

London

NW3 1QA

Created by: Esmerald Pavdeja (ARB / RIBA)

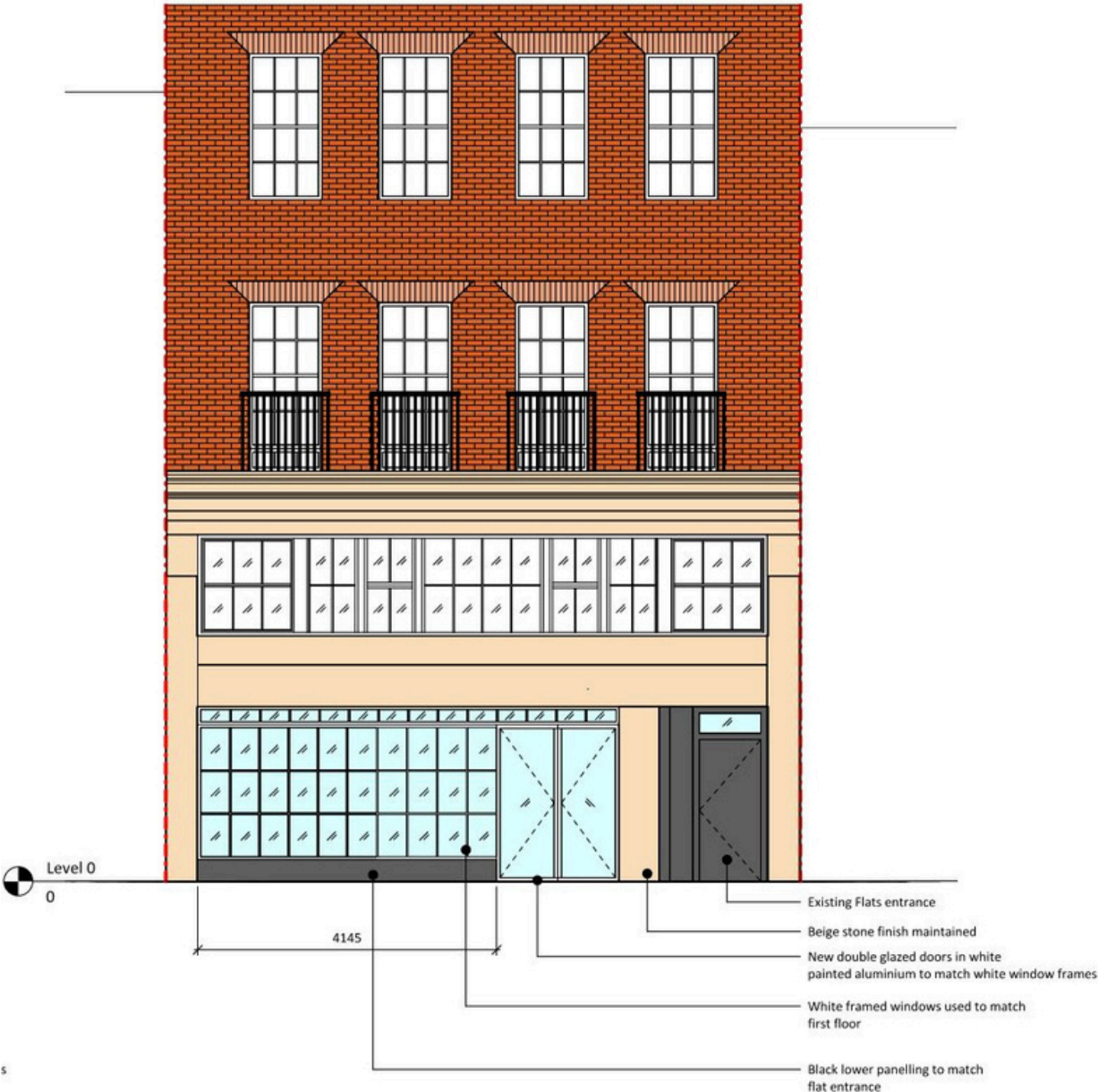
Date: 20.03.2024

1.0 Introduction

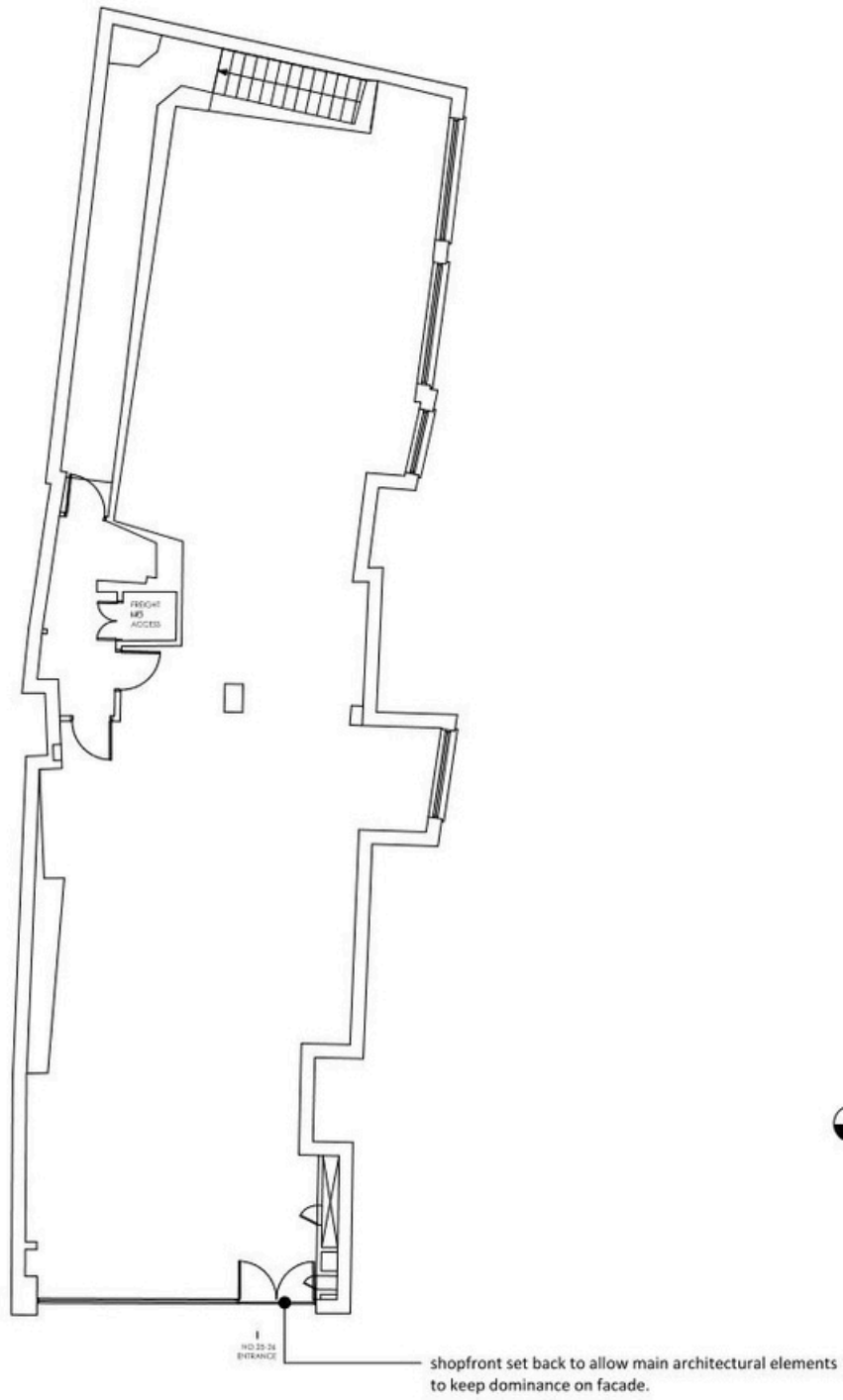
This document is meant to be read in conjunction with the drawings and with the existing consent: 2024/1168/P. The application was approved 29th May 2024.

The proposed application is for a non material amendment of the previously approved elevations and plans. The changes will be listed below.

Previous drawing - elevation - 2024/1168/P



Previous drawing - ground floor - 2024/1168/P



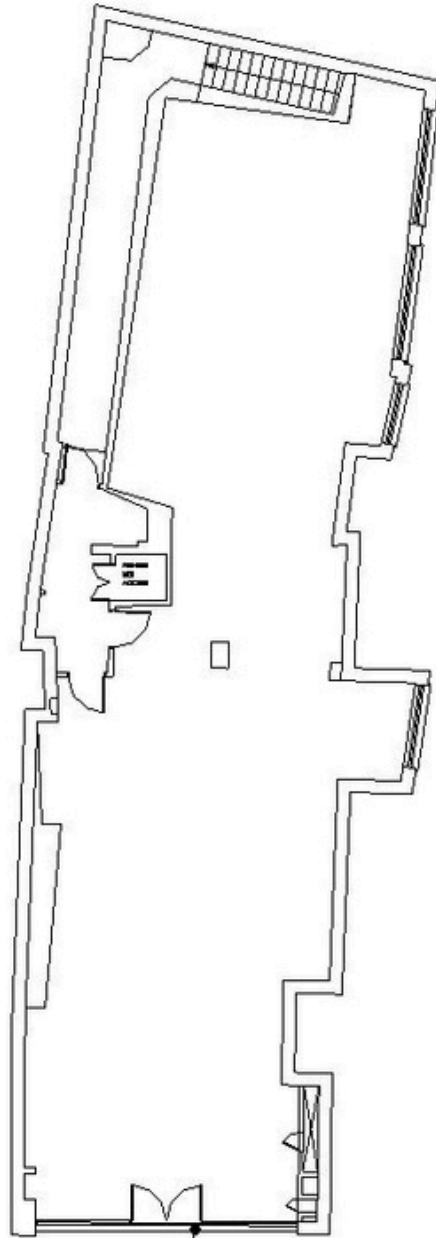
2.0 Proposed Changes

The proposed changes include moving the double glazed door to the centre of the unit to allow it to be a more attractive unit for potential users.

Proposed drawings - elevation



Proposed drawing - ground floor



shopfront

shopfront set back to allow main architectural elements to keep dominance on facade.

5.0 Conclusion:

In conclusion we believe that the proposed alterations fall under a Non material amendment as the overall scheme approved under 2024/1168/P remain largely the same.