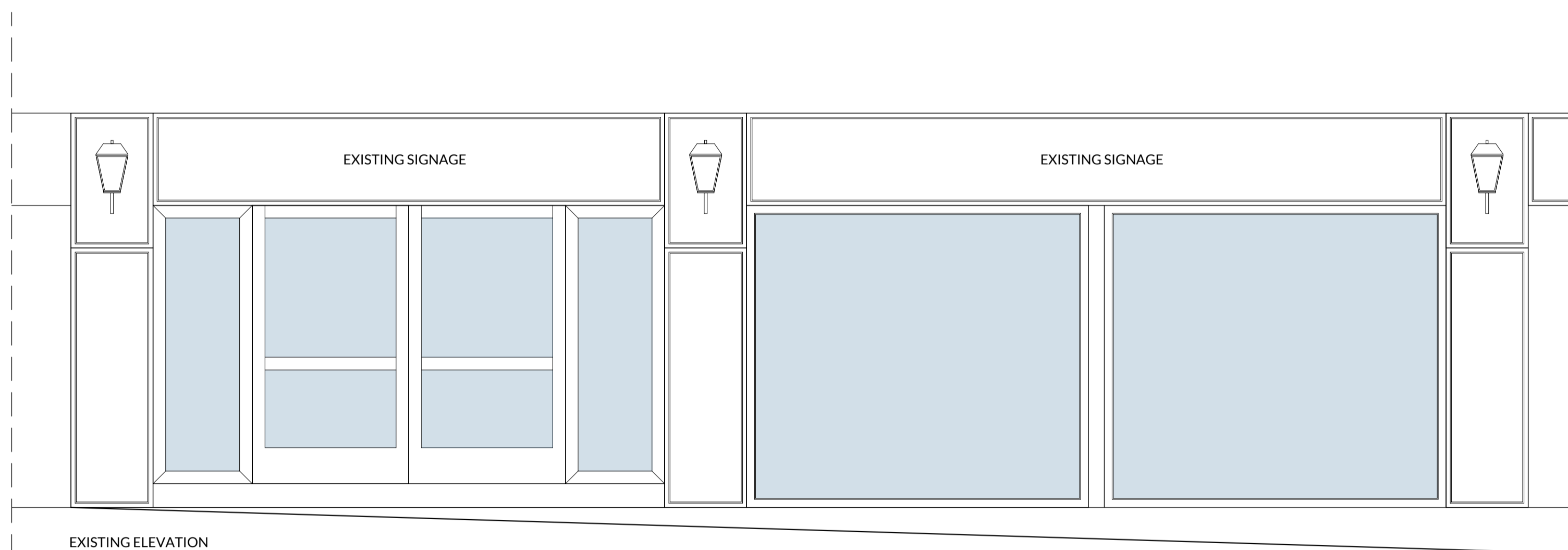


JOB NO <b>1453</b>	DWG NO <b>512</b>	REV <b>/</b>
-----------------------	----------------------	-----------------

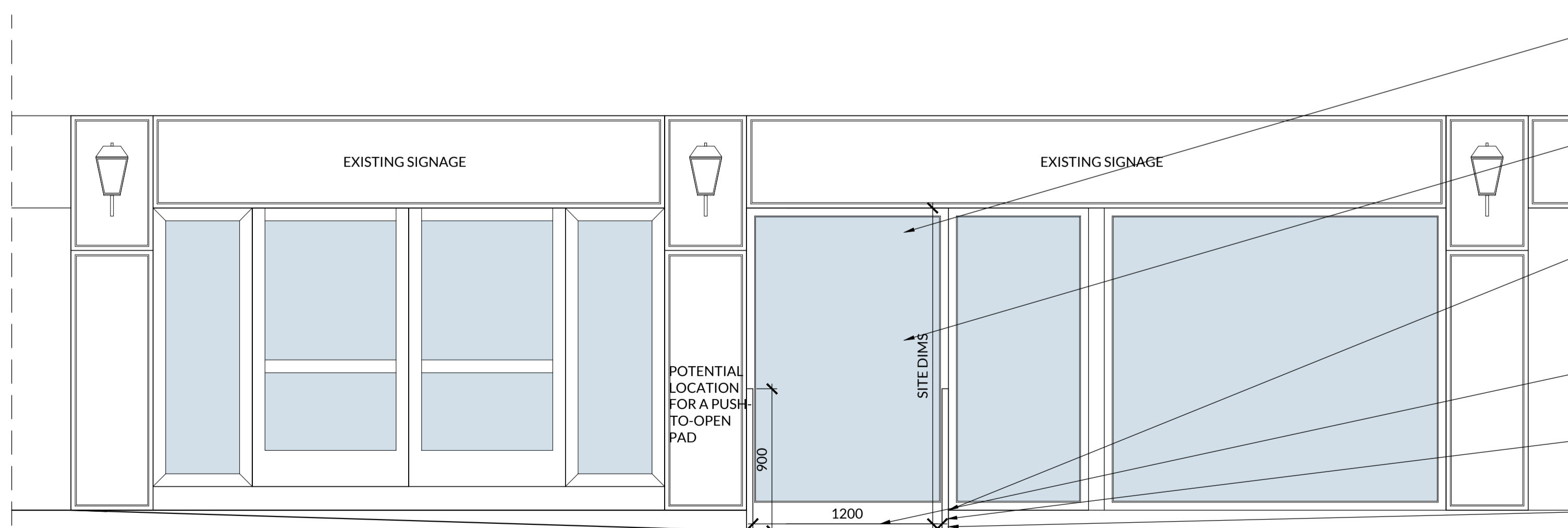
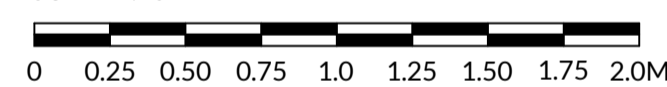
REVISION	DATE	DWN CHK



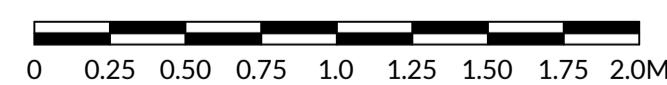
LOCATION PICTURE



EXISTING ELEVATION  
SCALE 1:25



PROPOSED ELEVATION  
SCALE 1:25



- NEW LAMINATED & TOUGHENED GLAZED DDA ENTRANCE DOOR IN A TIMBER FRAME TO MATCH THE STYLE OF THE EXISTING PUB SHOPFRONT.
- AUTOMATIC DOOR OPENING SYSTEM WITH A PUSH-TO-OPEN PAD, ALLOWING THE DOOR TO REMAIN OPEN FOR 5 MINUTES BEFORE AUTOMATICALLY CLOSING.
- PART OF THE EXISTING UPSTAND TO BE REMOVED AND REPLACED WITH A DDA-COMPLIANT RAMP, 50MM IN HEIGHT & WITH A 1:12 GRADIENT, IN ACCORDANCE WITH APPROVED DOCUMENT M.
- NON-SLIP FLOORING MEETING PTV 36+ (WET, B57976). FINISH: TBC
- 2X NEW POWDER-COATED ALUMINUM HANDRAILS ON BOTH SIDES OF THE RAMP AT A HEIGHT OF 900MM.
- MC TO ENSURE RAMP AND PAVEMENT ARE LEVEL.
- MC TO ENSURE APPROPRIATE DRAINAGE INSTALLED TO PREVENT WATER ACCUMULATION ON RAMP

This drawing is the property of Design Venue Limited. Copyright and design rights are reserved by them and the drawing is issued on the condition that it is not copied either wholly or in part without the written consent of Design Venue Limited.

DO NOT SCALE DRAWINGS. Figured dimensions to take preference over those scaled. All dimensions to be checked on site before commencement of any work or shop drawings. This drawing is to be read in conjunction with the specification when existing. Any discrepancies should be brought to the attention of the Architect / Designer.

**D|V** Architects  
Interiors | Design | Delivery  
RIBA #

Hallcourt House, 8 Hallcourt Crescent,  
Cannock, Staffordshire WS11 0AB  
Telephone: 01543 547 877  
Email: studio@dv-architects.co.uk

CLIENT  
**wetherspoon**

PROJECT  
**THE SIR JOHN  
OLDCASTLE, LONDON  
(PN 0430)**

DRAWING TITLE  
**EXISTING & PROPOSED  
ELEVATION**

SCALE  
1:25 @ A1

DATE: 21.06.2024  
DRAWN BY: MA  
CHECKED BY: JB

STATUS  
PRELIMINARY

JOB NO <b>1453</b>	DWG NO <b>512</b>	REV <b>/</b>
-----------------------	----------------------	-----------------