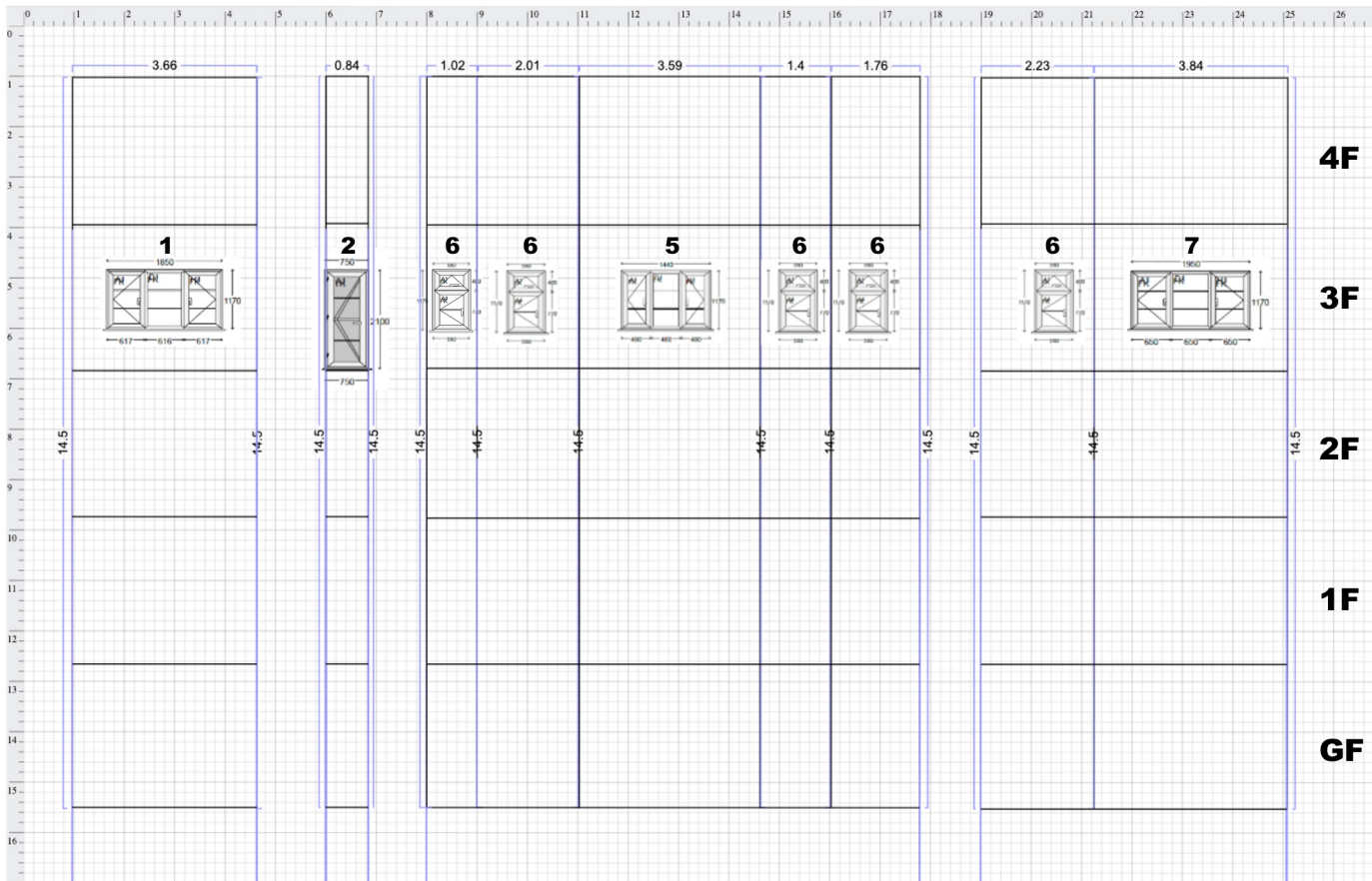


# PROPOSED ELEVATION

## Elevations/Overall Elevations

- GF - 2900mm (2.9m)
- 1F - 2900mm (5.8m)
- 2F - 2900mm (8.7m)
- 3F - 2900mm (11.6m)
- 4F - 2900mm (14.5m)



**The elevation isn't changing from the existing windows so the existing and the proposed are the exact location and same elevation as the existing windows.**

**The property is on the third floor on the above elevation.**

**The proposed windows will be the same size as the existing windows, the only change is the material to uPVC.**

**The existing and proposed windows are both casement windows.**

**The numbers above the windows above relate to the window number on the Order Acknowledgement PDF attached to this application.**