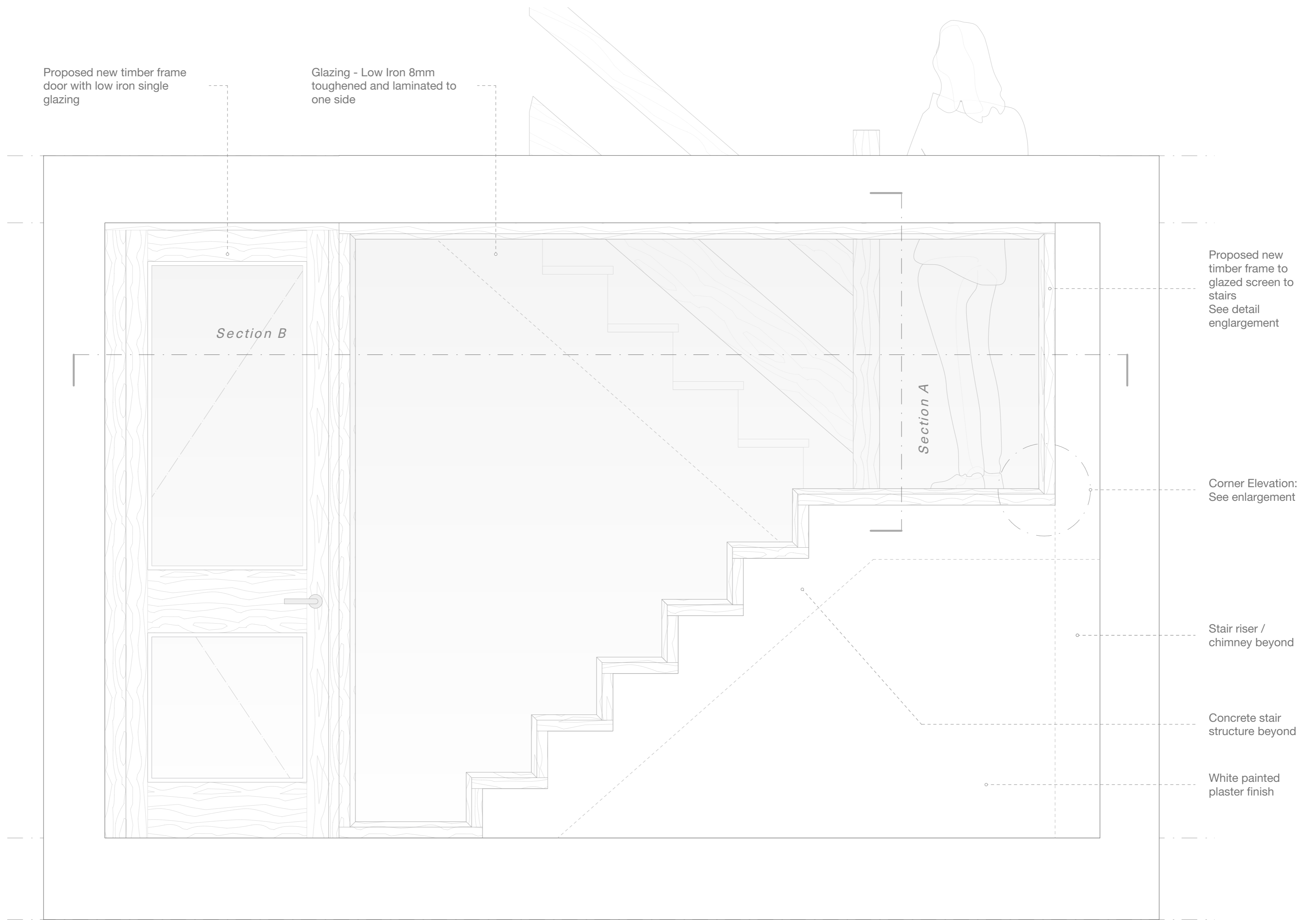
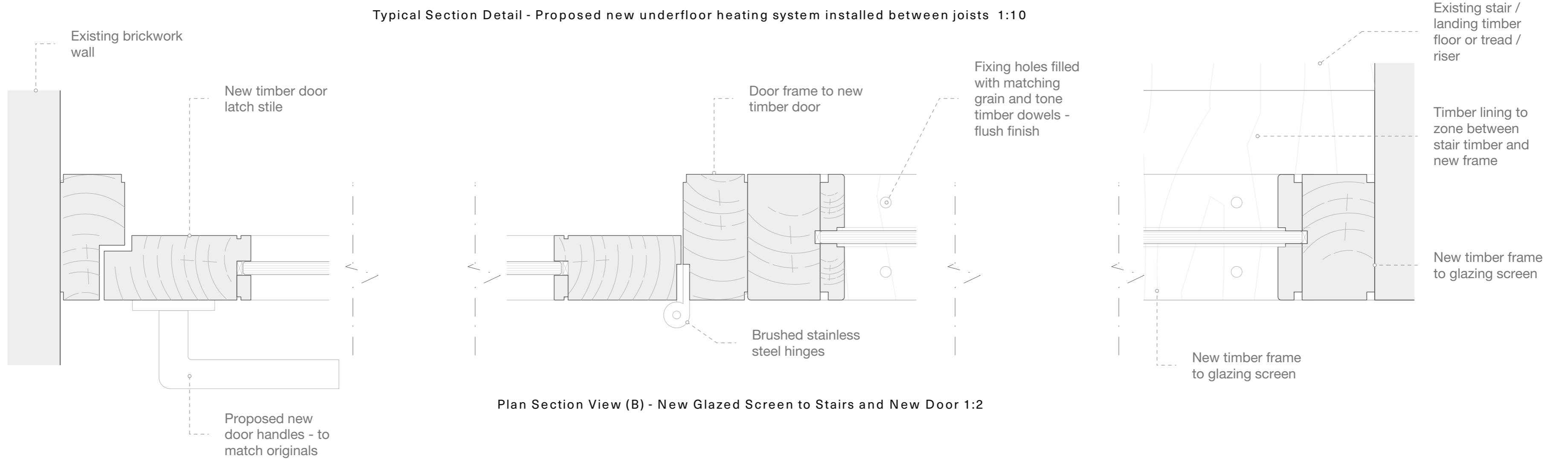


GENERAL NOTES: PRELIMINARY INFORMATION - NOT FOR CONSTRUCTION

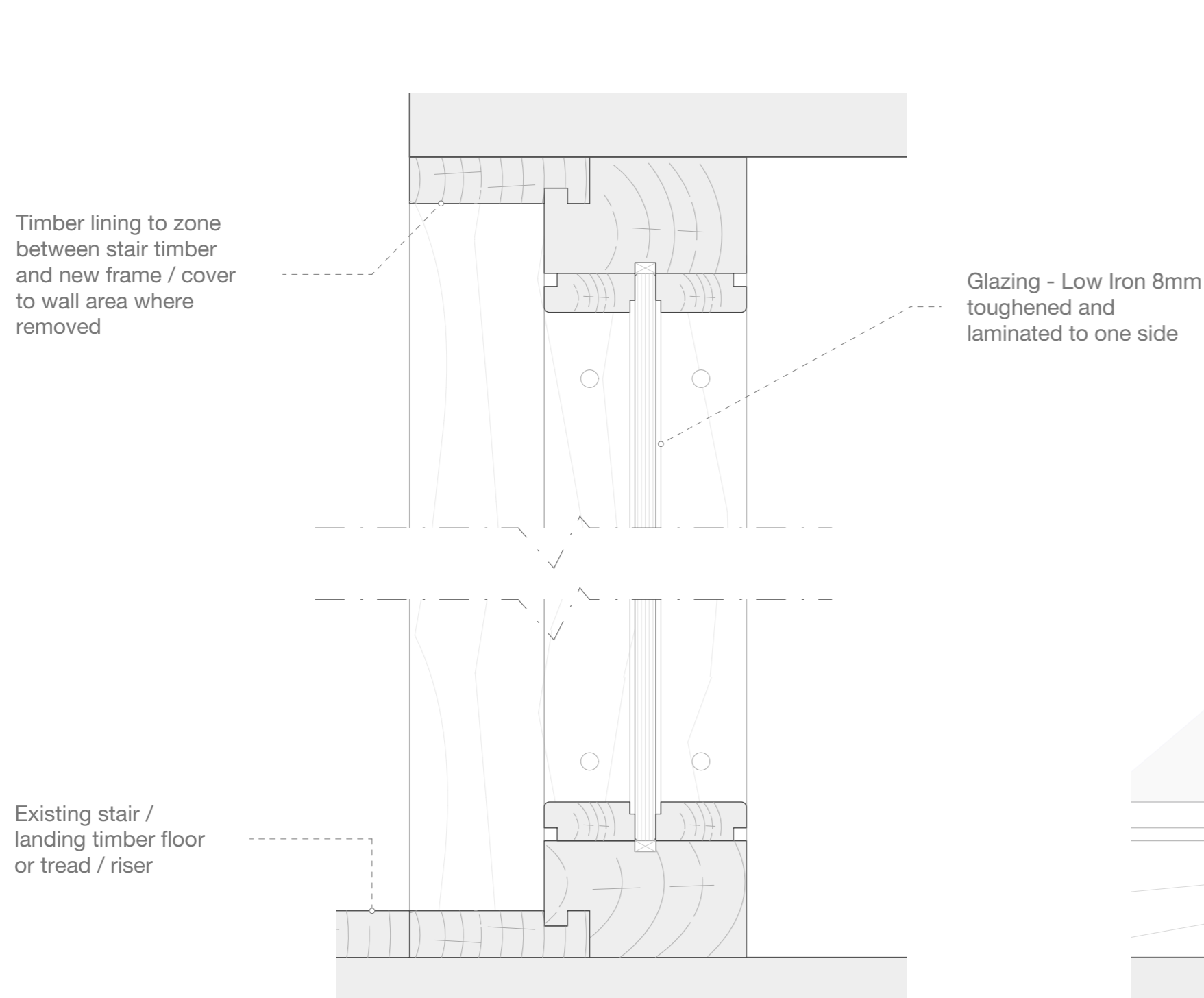
Solid wood floors: the moisture-content of the timber should be measured prior to installation, verified as 8-10% and recorded for reference (confirm appropriate levels with suppliers) Check and confirm in writing with the flooring supplier that the proposed floor is suitable with underfloor heating. Tongued and grooved joints in the floor deck should be glued with supplier recommended adhesive conforming to durability class D3 of BS EN 204. It is essential that a clear gap of at least 10mm is left all the way around the periphery of a timber floor deck, under the skirting to accommodate any swelling of the floor deck due to change in moisture content. All wedges used during the floor deck installation, to press panels together, must be removed when the floor deck is complete. During the initial heat up, the mixing valve should be set to supply temperature between 20°C and 25°C which needs to be maintained for at least 3 days. After this period, the flow temperature can then be increased to the design maximum and should be held for a further 4 days to complete the process.



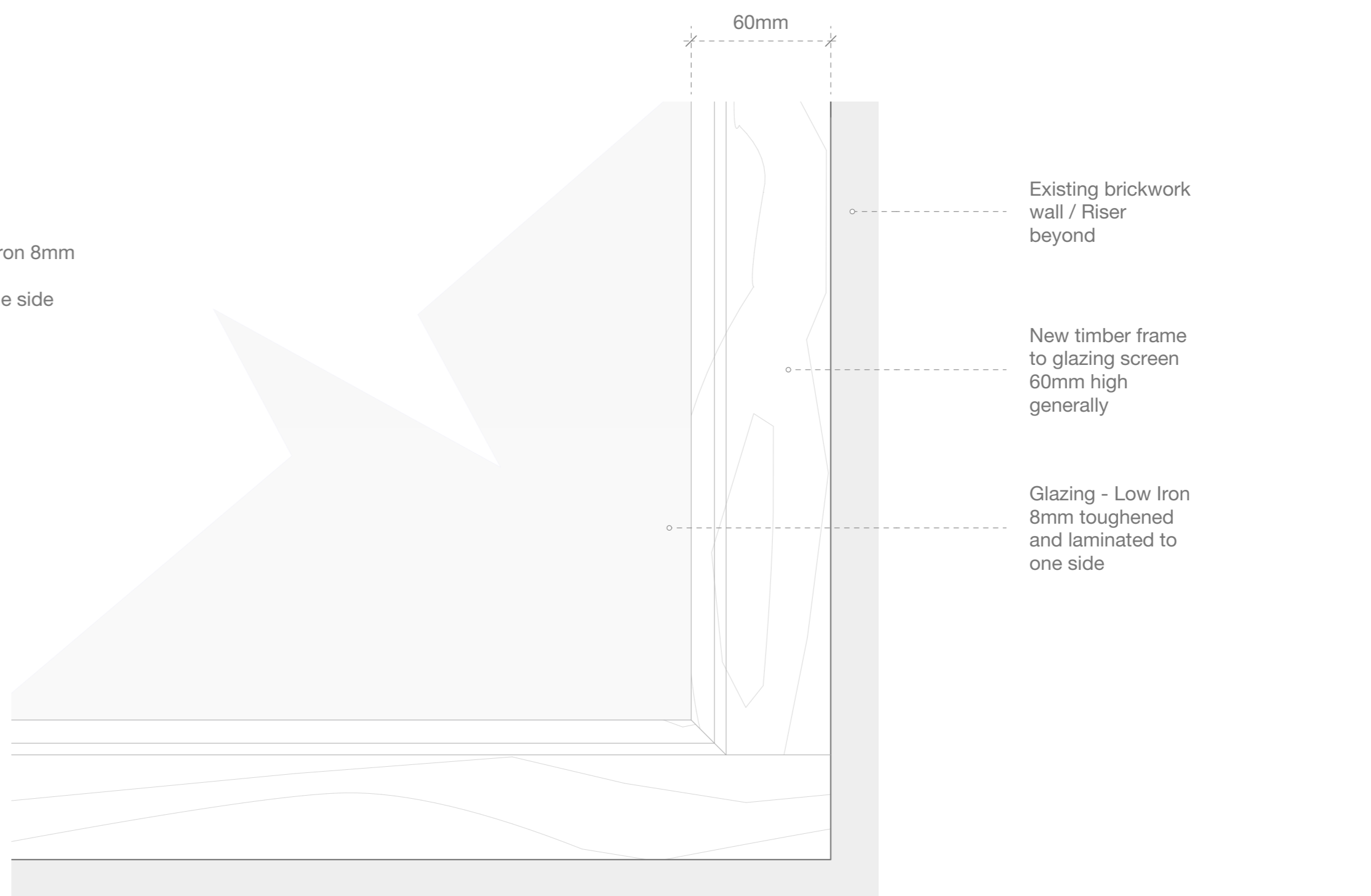
Typical Section Detail - Proposed new underfloor heating system installed between joists 1:10



Plan Section View (B) - New Glazed Screen to Stairs and New Door 1:2



Typical Vertical Section Detail (A) - Proposed New Glazed Screen 1:2



Corner Elevation - Proposed New Glazed Screen to Stairs 1:2

