

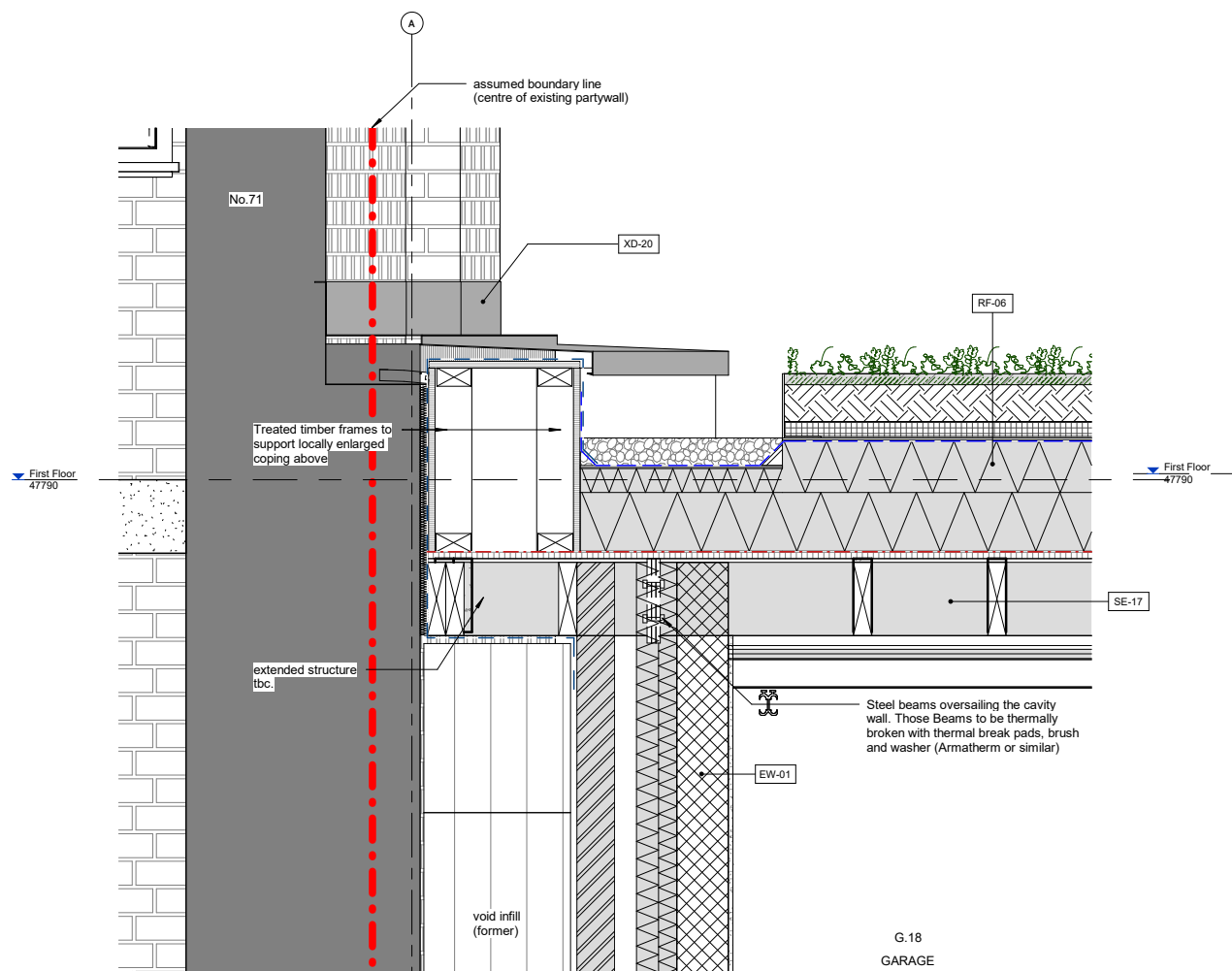


**69 AVENUE ROAD
LONDON, NW8 6HP**

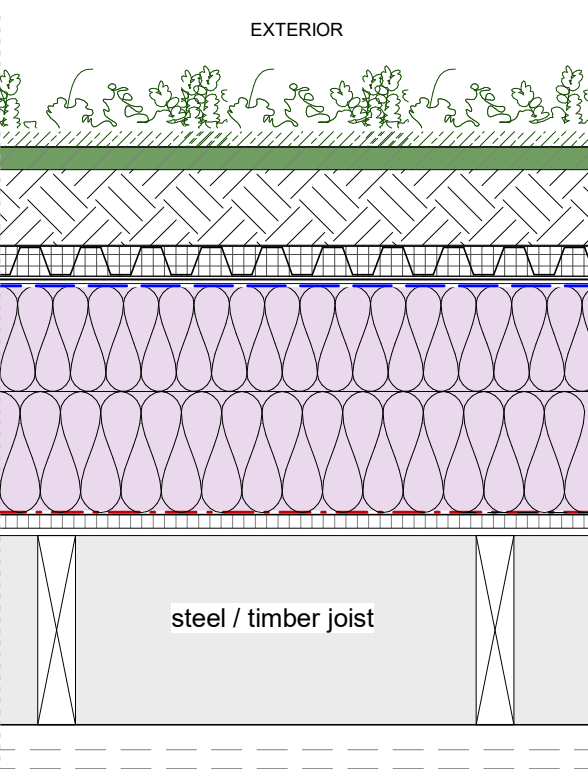
DISCHARGE OF CONDITION NO. 10
LIVING ROOF
JUNE 2024

KSR ARCHITECTS LLP
14 GREENLAND STREET
LONDON NW1 0ND
T: +44 (0)20 7692 5000
MAIL@KSRARCHITECTS.COM
WWW.KSRARCHITECTS.COM





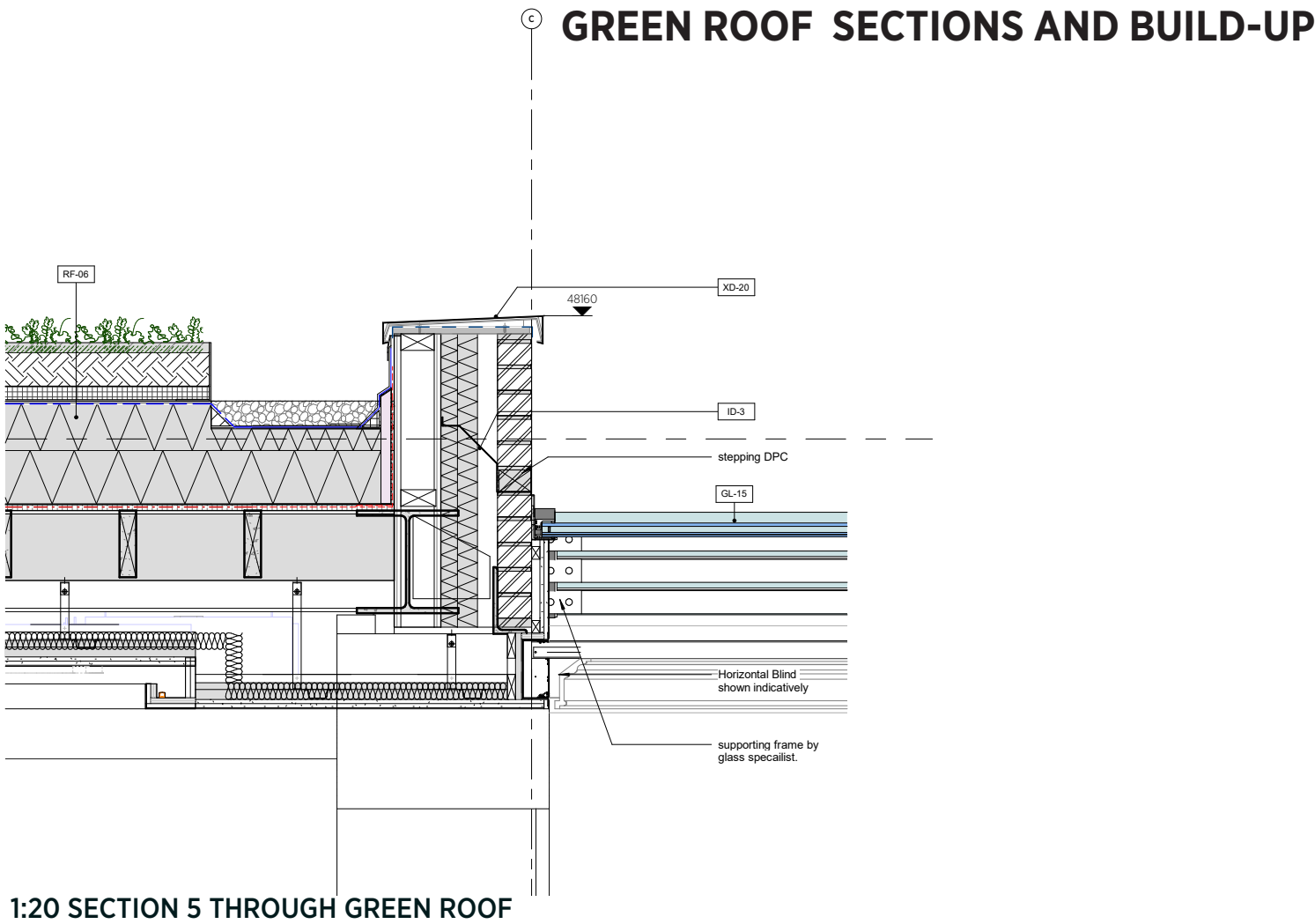
1:20 SECTION 5 THROUGH GREEN ROOF



GREEN ROOF BUILD-UP

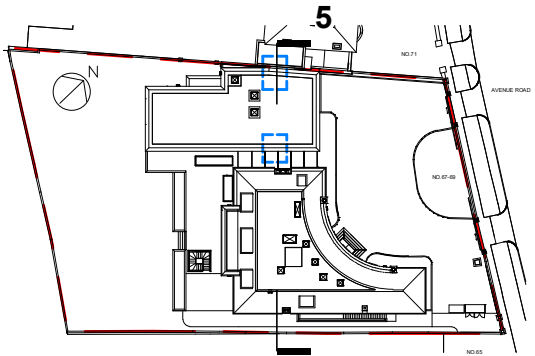
1. Planting to Landscape Designer's specification	-
2. Bauder Green Roof Substrate	144mm
3. BauderGREEN FV 125 100 Filter Fleece	1mm
4. DSE40 Drainage/reservoir board	40mm
5. Bauder Protection layer FSM 600	4mm
6. Top layer - Bauder KSK Plant-E Underlayer - BauderTEC KSA DUO	5.2mm 3mm
7. Tapered Bauder PIR FA Insulation	Average 210mm
8. Vapour barrier - BauderTEC KSD FBS	2.5mm
9. Bauder APR01 primer	0mm
10. Roof structure to S.E. details	268mm
OVERALL AVERAGE THICKNESS	678mm

Target U-value: 0.10 W/m2K



1:20 SECTION 5 THROUGH GREEN ROOF

Key Plan:



WB Native Wildflower Blanket Biodiverse Green Roof System



	Function	Product name
1	Vegetation	WB Native Flower Wildflower Blanket
2	Substrate	BauderGREEN SUB-EM UK
3	Filtration layer	BauderGREEN FV 125 100
4	Drainage layer	BauderGREEN DSE 40
5	Protection layer	Bauder GREEN FSM 600
Green roof system build-up		
6	Bauder Waterproofing	Options for Bituminous membrane, Hot Melt, Single ply or Cold applied liquid systems.

WB Native Wildflower Blanket Biodiverse Green Roof

WB wildflower blanket is a vegetation blanket that contains a broad mix of British wildflowers grown in substrate on a coir carrier. The natural fibres of the coir carrier promote the rapid rooting of the blanket into the substrate, which allows the quick establishment of a green roof.

Key Features

- Fully FLL and GRO compliant systems
- Buglife approved
- Low system weight
- Height of system is typically 170-220mm
- 13.5 litres of water retention within the drainage board
- Provides valuable ecological habitats
- Contains 36 species of plants

Benefits

- Instant visual effect from pre-grown blanket
- Assists in meeting a BAP
- Improves SUDs capacity of the roof
- Environmentally friendly peat free product
- System helps mitigate flooding

General maintenance:

- Ensure that relevant health and safety procedures are followed when working at roof level:
- Remove all dead vegetation and debris from the roof surface, taking particular care to ensure that all chute outlets, gutters and downpipes are clear.
- Remove the lids of all inspection chambers, ensure that all rainwater outlets and downpipes are free from blockages and that water can flow freely away.
- Ensure that any protective metal flashings and termination bars remain securely fixed in place. Renew or repair as necessary.
- Examine all mastic sealant and mortar pointing for signs of degradation

Vegetation maintenance:

- With the exception of saplings, which should always be removed, weeds in an extensive green roof should be considered as a problem only of aesthetics. If considered excessive, they can be removed either manually or by using a ‘spot weed wipe’
- Bare patches can be easily repaired and this is best done during the main growing seasons of March/April or from late August until the end of September.
- Using vegetation cuttings from surrounding areas of abundant growth and either Bauder substrate or a sand soil mix following the guidance of Bauder’s Patching Maintenance Guide.
- Bauder always advises that there should be a way to water any green roof during times of dry weather