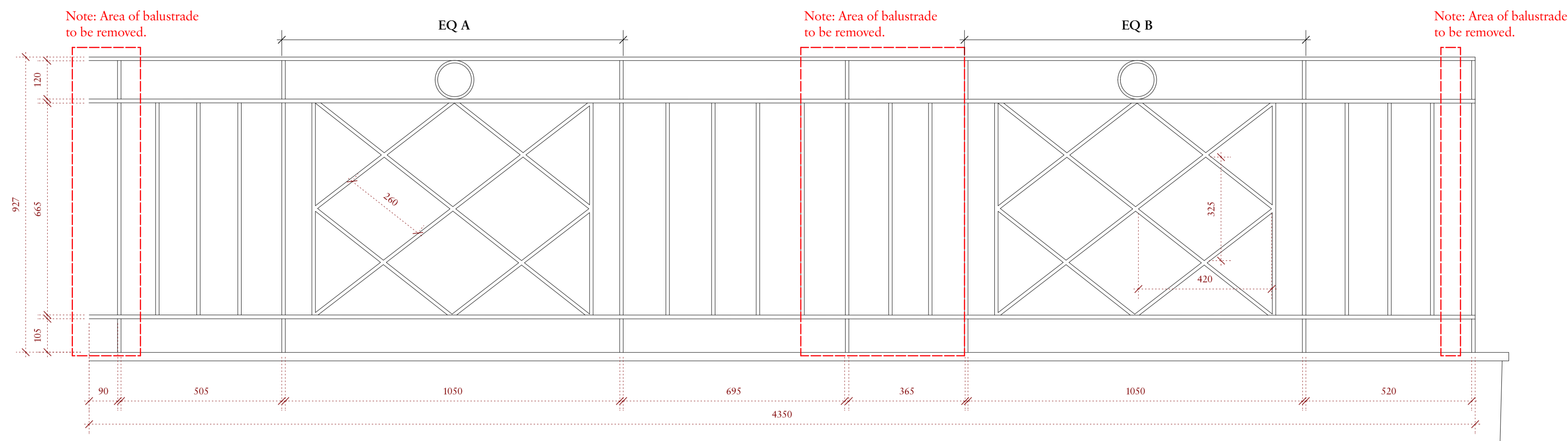


Important note

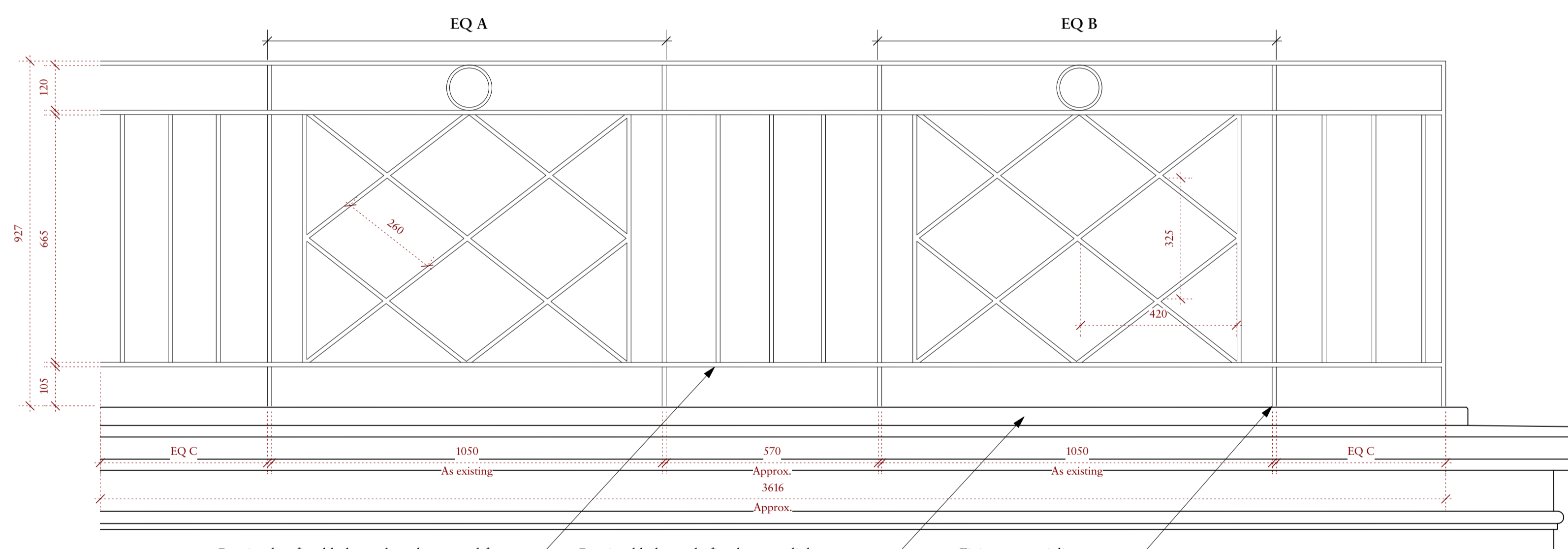
All dimensions in millimetres. Where dimensions are not given, drawings must not be scaled and the matter referred back to Charlton Brown Architects.

All dimensions and conditions are to be checked on site by the contractor prior to preparing drawings or commencing any work. The contractor is responsible for checking that there is no conflict between site dimensions and drawn dimensions.

In the event of any detail or dimensional conflict between Charlton Brown Architects drawings, the matter must be referred back to Charlton Brown Architects for clarification



1 Existing - Rear Terrace Railing Detail (Left)
Scale: 1:10

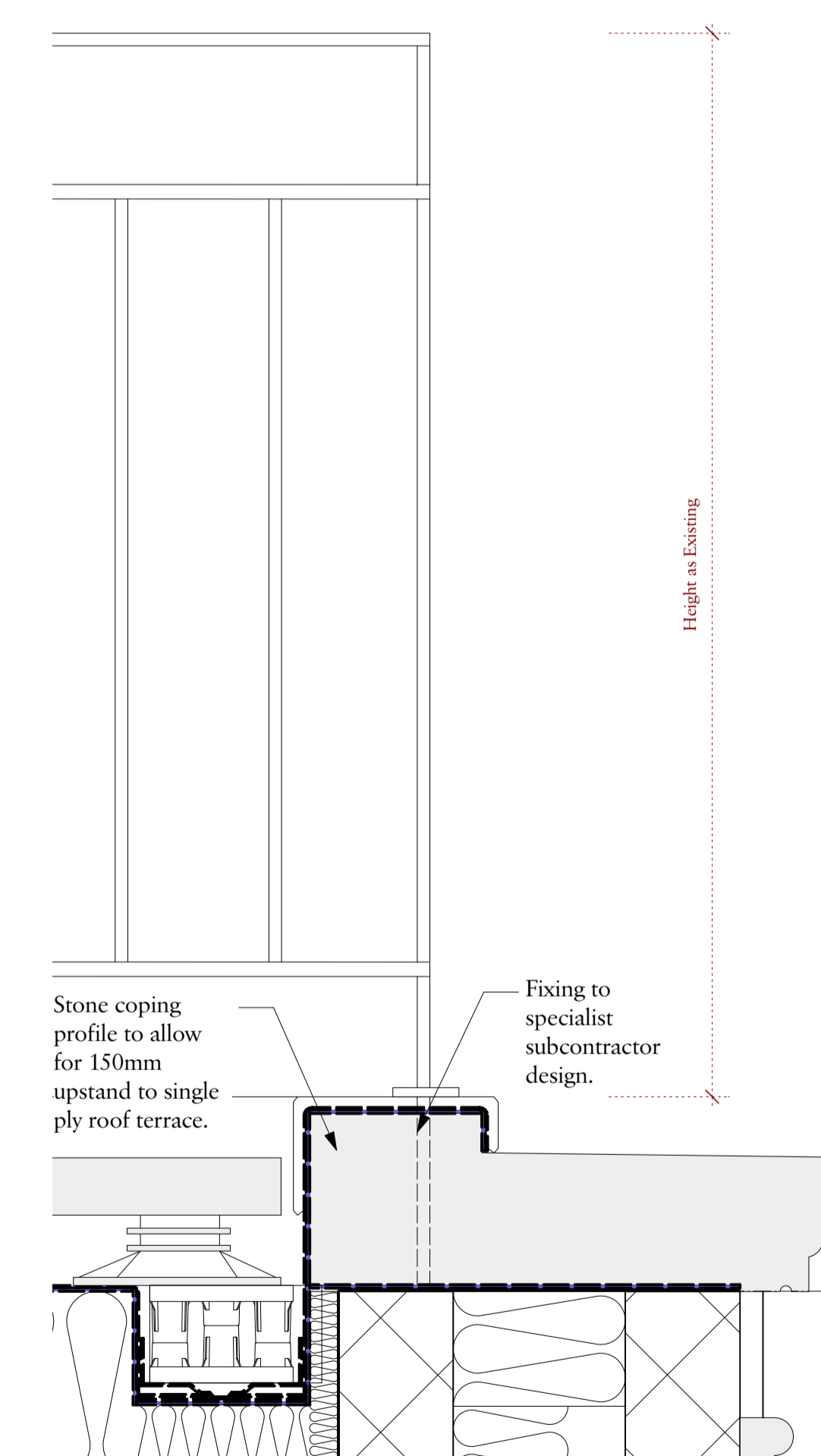


Retained, refixed balustrade to be treated for signs of rust, missing elements replaced (including some diagonal pieces). To be lightly sanded and repainted.

Retained balustrade fixed to new light grey limestone coping - length amended to suit new rear extension dimensions.

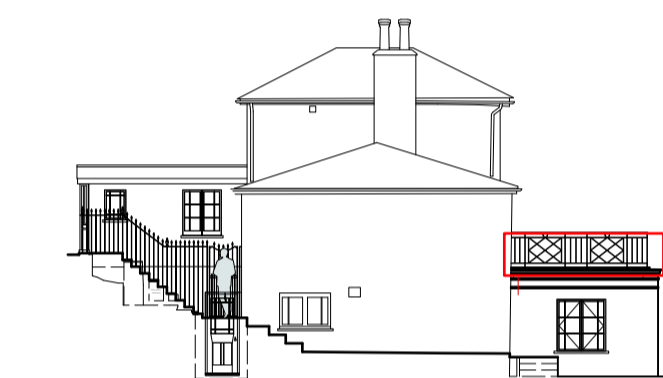
Fixing to specialist subcontractor design.

2 Proposed - Rear Terrace Railing Detail (Left)
Scale: 1:10



3 Rear Terrace Railing Detail
Scale: 1:5

KEY



A	27/06/2024	General amendments	LF
Rev	Date	Details	By

**Charlton Brown
Architecture & Interiors**

The Belvedere, 2 Back Lane, Hampstead, London, NW3 1HL
Telephone +44(0)20 7794 1234
Email office@charltonbrown.com
Website www.charltonbrown.com

Client
Polly Samson

Project
49 Downshire Hill

Drawing Title
GF Rear Terrace Railing Detail 01

Date	Drawn	Checked
27/06/2024	KH	DB

Scale
Scale varies

Issue Status
FOR PLANNING

Project Number	Drawing Number	Revision
22005	90-001	A