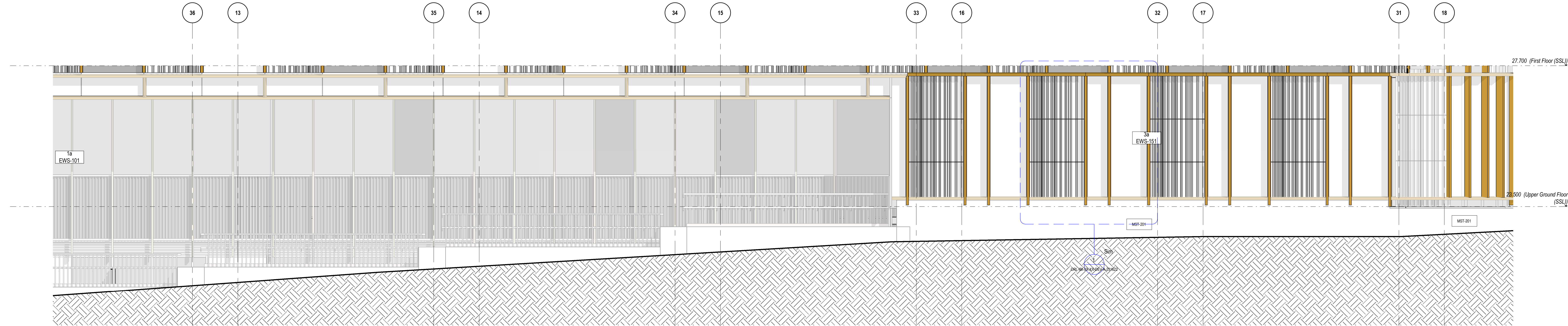
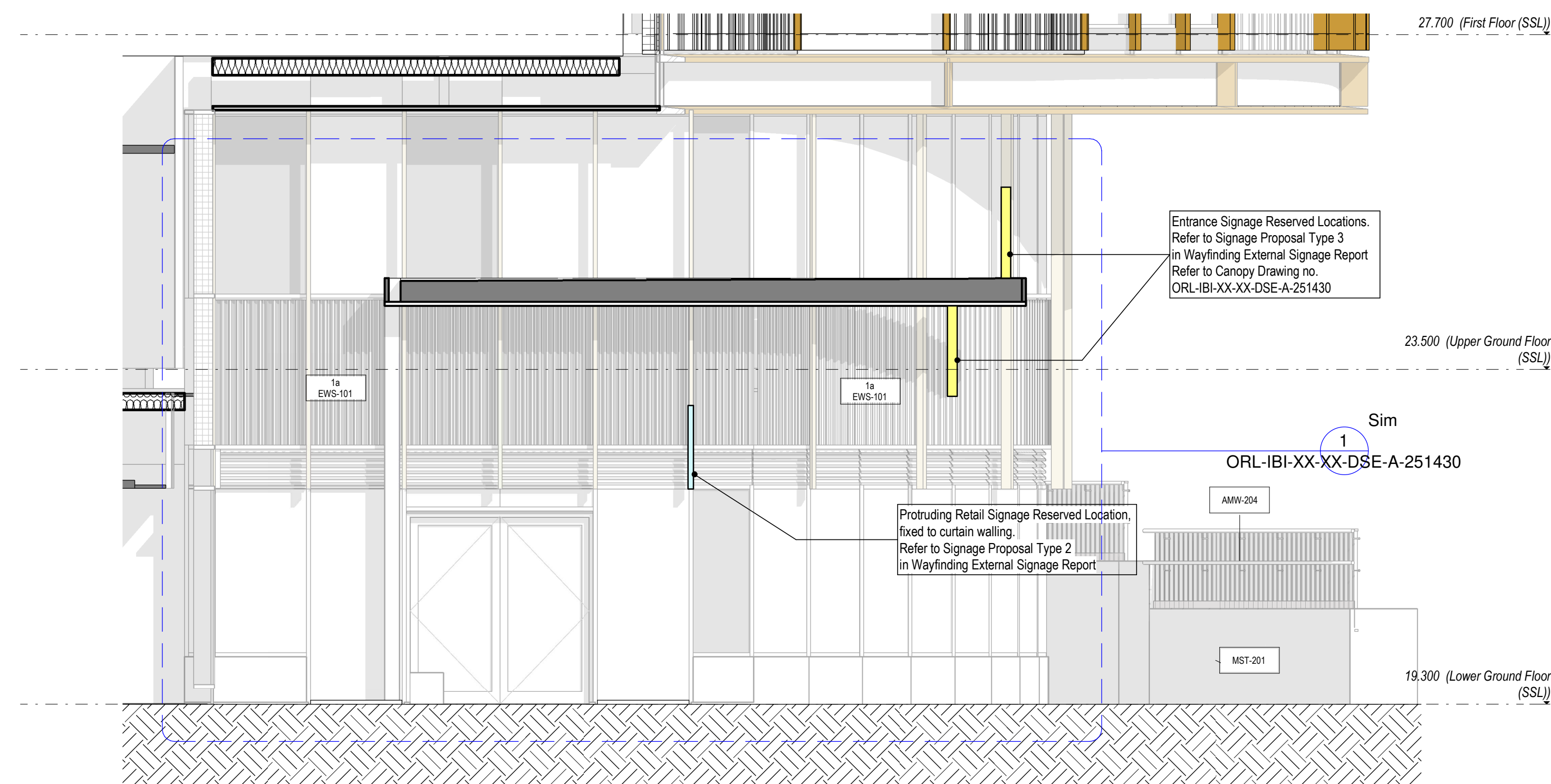


1] SOUTHEAST ELEVATION 1 LEVEL LG & UG
1 : 50



2] SOUTHEAST ELEVATION 2 LEVEL LG & UG
1 : 50



3] SOUTH ENTRANCE SIDE ELEVATION LEVEL LG & UG
1 : 50

KEY PLAN

ELEVATION

Scale: 1:100

UNLISTED MODEL SCHEDULE

Model Name	Revision	Model Title
ORL-APP-22-22-MH3-1000001	001	MEP Services North, Tenth, Eleventh Floors
ORL-IBI-XX-XX-MM3-A-000101	P01	MEP Structural Buildoutwork
ORL-IBI-XX-XX-MM3-A-000102	P02	Shared Levels and Grids
ORL-IBI-XX-XX-MM3-A-000103	P03	Architectural Exterior Model
ORL-IBI-XX-XX-MM3-A-000104	P04	Architectural Roof Model ETTE
ORL-IBI-XX-XX-MM3-A-000105	P05	Architectural Interior Fabric Model
ORL-IBI-XX-XX-MM3-L-000301	P06	Landscape Model
ORL-IBI-XX-XX-MM3-L-000302	P07	Structural Model
ORL-IBI-XX-XX-MM3-L-000303	P08	Structural Model

Facade Types Key:

Type 1a: EWS-101 & EWS-111: Non-fire rated flat and located lower ground and ground floor capped glazed stick curtain wall system & fire-rated lower ground capped glazed curtain wall system

Type 1b: EWS-121: Flat and curved ground floor capped glazed stick curtain wall system

Type 1c: EWS-101: Non-fire rated capped stick curtain wall system (granite base)

Type 1d: EWS-101: Non-fire rated capped stick curtain wall system, curved lead to heavy wall which provides for rising double glazed external panel units only

Type 1e: EWS-101: Non-fire rated capped stick curtain wall system (granite base)

Type 1f: EWS-101: Flat unbraced glazed and terracotta system

Type 1g: EWS-101: Flat unbraced glazed and terracotta system

Type 1h: EWS-101: Flat unbraced glazed and terracotta system

Type 1i: EWS-101: Flat unbraced glazed and terracotta system

Type 1j: EWS-101: Flat unbraced glazed and terracotta system

Type 1k: EWS-101: Flat unbraced glazed and terracotta system

Type 1l: EWS-101: Flat unbraced glazed and terracotta system

Type 1m: EWS-101: Flat unbraced glazed and terracotta system

Type 1n: EWS-101: Flat unbraced glazed and terracotta system

Type 1o: EWS-101: Flat unbraced glazed and terracotta system

Type 1p: EWS-101: Flat unbraced glazed and terracotta system

Type 1q: EWS-101: Flat unbraced glazed and terracotta system

Type 1r: EWS-101: Flat unbraced glazed and terracotta system

Type 1s: EWS-101: Flat unbraced glazed and terracotta system

Type 1t: EWS-101: Flat unbraced glazed and terracotta system

Type 1u: EWS-101: Flat unbraced glazed and terracotta system

Type 1v: EWS-101: Flat unbraced glazed and terracotta system

Type 1w: EWS-101: Flat unbraced glazed and terracotta system

Type 1x: EWS-101: Flat unbraced glazed and terracotta system

Type 1y: EWS-101: Flat unbraced glazed and terracotta system

Type 1z: EWS-101: Flat unbraced glazed and terracotta system

Note:

TYPE 1: Building Storage in Internal Glazing Reserved Areas (Condition 6.2)
Refer to Wayfinding External Signage Report ORL-IBI-XX-XX-TSP-A-401000

TYPE 2: Protuding Retail Signage Reserved Areas (Condition 6.2)
Refer to Wayfinding External Signage Report ORL-IBI-XX-XX-TSP-A-401000

TYPE 3: Entrance Signage Reserved Areas (Condition 6.2)
Refer to Wayfinding External Signage Report ORL-IBI-XX-XX-TSP-A-401000

TYPE 4: Required Fire or Hazard Signage Reserved Areas (Condition 6.2)
Refer to Wayfinding External Signage Report ORL-IBI-XX-XX-TSP-A-401000

Note: Current Layout is based on third Strategy Drawing series 412 Rev P01

S3	P02	2024-03-13	Revised for Stage 4 Comment	SL - EP	
S3	P01	2024-02-02	Issue for Planning Condition 6.2	SL - EP	
STATUS	REVISION	DATE	DESCRIPTION	SL - EP	
MAIN CONTRACTOR			Bouygues UK Beckett House 1 Lambeth Palace Road Lambeth, London SE1 7EU Tel: 020 7401 0020		
CLIENT			Oriel Creating the centre for advancing eye health		
ORIGINATOR			Intelligence Buildings Infrastructure		
ORIGINATOR REFERENCE			127091		
PROJECT NAME			Oriel		
DRAWING TITLE			Facade Strategy Elevation, LG & UG Southeast Facade		
DESIGN PACKAGE			Facade Package		
MODEL FILE NAME - REVISED			ORL-IBI-XX-XX-MM3-A-000101 - P71		
SCALE (A0)	PROJECT STAGE	S3 - For Review and Comment	REVISION	P02	
As indicated	RIBA 4				
DRAWING NUMBER			ORL-IBI-XX-XX-DEV-A-251226		