

KEYS:

REVISIONS:

PROJECT TITLE:

No.35 GRAYS INN RD.,  
LONDON - WC1X 8PG

DRAWING TITLE:

EXISTING AC  
ELEVATION A & B

SCALE:

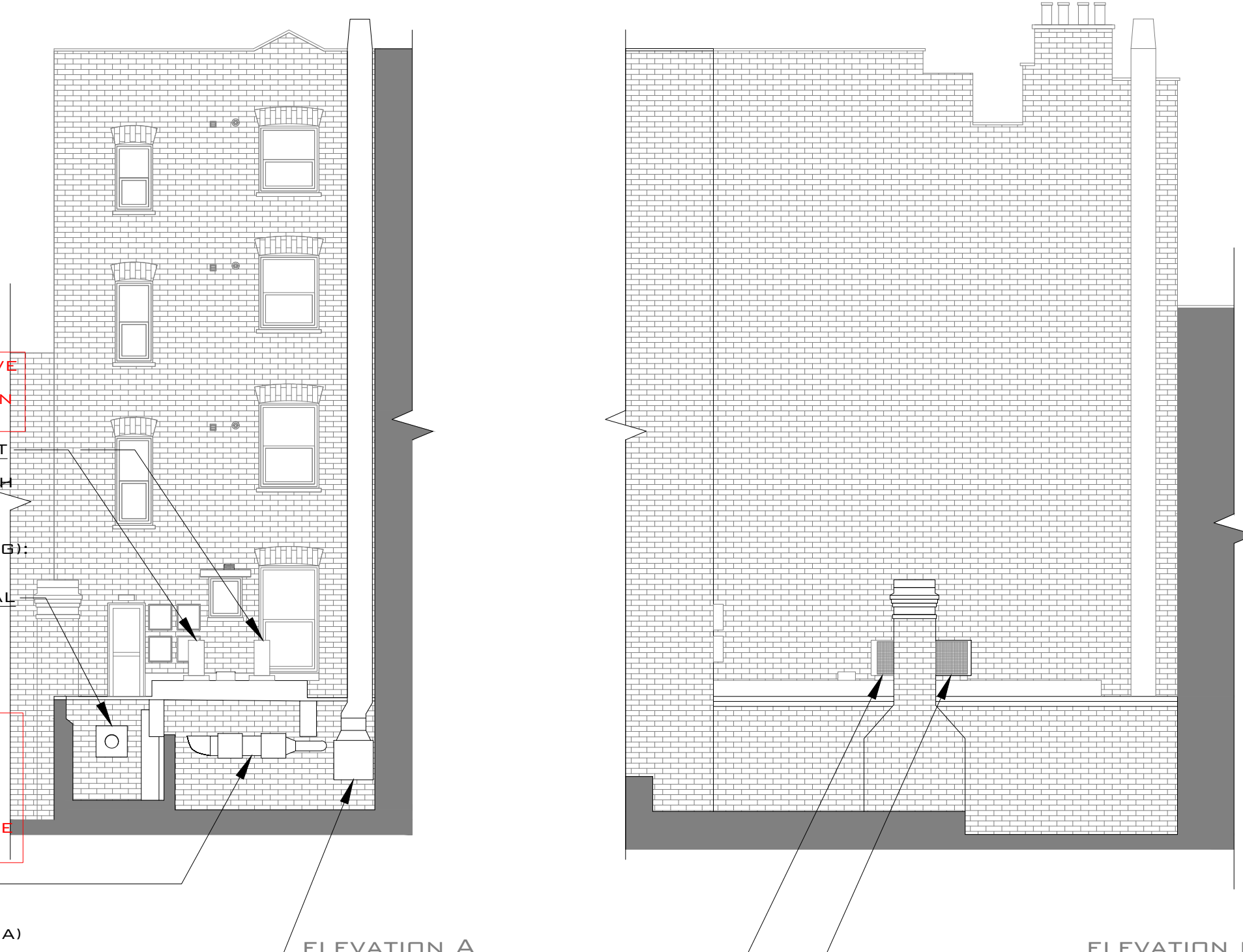
1:100@A3



CREATION DATE:

3RD MAY 2024

# 207A



AC OUTDOOR UNITS WILL HAVE COVERED WITH ACOUSTIC ENCLOSURES EACH GIVING AN ATTENUATION OF 10 DB.

MITSUBISHI AC OUTDOOR UNIT  
 SUZ-M50VA  
 DIMENSION: 800Wx285Dx714H  
 SOUND PRESS. LEVEL (HEATING/COOLING): 48DB(A)/49DB(A)  
 SOUND POWER LEVEL(COOLING): 64DB(A)

HELIOS GIGABOX CENTRIFUGAL FAN GBW250-4  
 DIMENSION: 500X500X500  
 SOUND PRESS. CASE BREAKOUT: 29DB(A)

THE AIR INTAKE FAN WILL REPLACE WITH A QUIETER MODEL AND LOCATED INTERNALLY WITH ATTENUATORS AND WITH AN INTAKE DUCT LOCATED TOWARDS THE CENTRE OF THE RESTAURANT ROOF.

CONTRA ROTATING CASED AXIAL FANS TCBTX2  
 DIMENSION: 596ØX375  
 SOUND PRESS. LEVEL: 79DB(A)

THE EXTRACTOR FAN WILL HAVE AN ACOUSTIC ENCLOSURES TO GIVE AN ATTENUATION OF 10DB AND HAVING A 1200MM ATTENUATOR AT THE OUTLET OF THE EXTRACTOR.

HELIOS GIGABOX CENTRIFUGAL FAN GBW560-4  
 DIMENSION: 800X800X800  
 SOUND PRESS. CASE BREAKOUT: 45DB(A)

ELEVATION A

MITSUBISHI AC OUTDOOR UNIT  
 MUZ-AP25VG  
 DIMENSION: 800Wx285Dx550H  
 SOUND PRESS. LEVEL (HEATING/COOLING): 48DB(A)/47DB(A)  
 SOUND POWER LEVEL(COOLING): 59DB(A)

AC OUTDOOR UNITS WILL HAVE COVERED WITH ACOUSTIC ENCLOSURES EACH GIVING AN ATTENUATION OF 10 DB.

ELEVATION B

MITSUBISHI AC OUTDOOR UNIT  
 SUZ-M50VA  
 DIMENSION: 800Wx285Dx714H  
 SOUND PRESS. LEVEL (HEATING/COOLING): 48DB(A)/49DB(A)  
 SOUND POWER LEVEL(COOLING): 64DB(A)

AC OUTDOOR UNITS WILL HAVE COVERED WITH ACOUSTIC ENCLOSURES EACH GIVING AN ATTENUATION OF 10 DB.